

DC Pass

Bi-Directional Coupler

ZABDC10-25HP

50Ω Up to 10W 1500 to 2500 MHz

Maximum Ratings

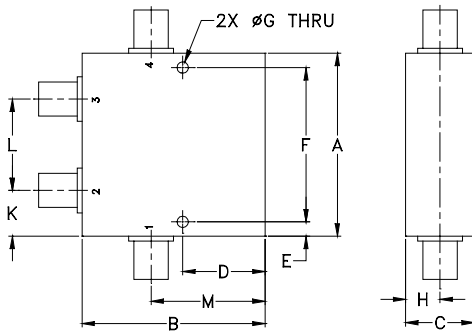
Operating Temperature	-55°C to 100°C
Storage Temperature	-55°C to 100°C
DC Current	3.0A

* Case temperature is defined as temperature on ground leads.
Permanent damage may occur if any of these limits are exceeded.

Coaxial Connections

INPUT	1
OUTPUT	4
COUPLED (forward)	2
COUPLED (reverse)	3

Outline Drawing



Outline Dimensions (inch/mm)

A	B	C	D	E	F	G	
2.00	2.00	.75	.90	.156	1.688	.125	
50.80	50.80	19.05	22.86	3.96	42.88	3.18	
H	J	K	L	M		wt	
.38	---	.50	1.00	1.25		grams	
9.65	---	12.70	25.40	31.75		145	

Features

- excellent directivity, 26 dB typ.
- low mainline loss, 0.55 dB typ.
- high power, up to 10W
- rugged shielded case
- DC Current through input to output 3.0A Max. at 1.0 Watt RF input power.

Applications

- PCS/DCS/UMTS
- power leveling & monitoring
- VSWR measurement

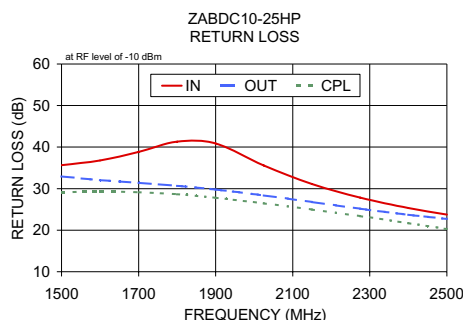
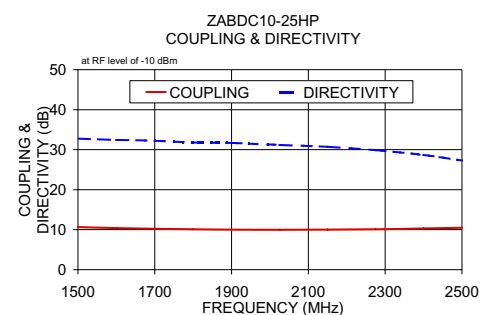
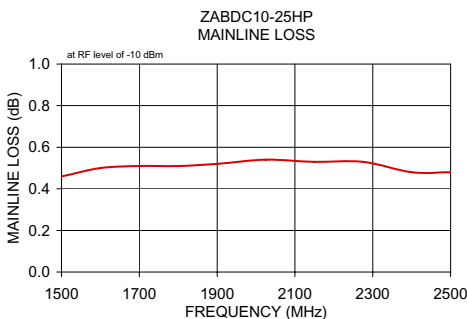
Bi-Directional Coupler Electrical Specifications

FREQ. RANGE (MHz)	COUPLING (dB)		MAINLINE LOSS ¹ (dB)		DIRECTIVITY (dB)		VSWR (:1)	POWER INPUT (W)
	Norm.	Flatness	Typ.	Max.	Typ.	Min.		
f_L - f_U								
1500-2500	10.0±1.0	±0.5	0.55	0.9	26	18	1.1	10

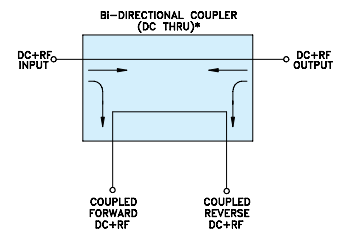
1. Mainline loss includes theoretical power loss at coupled port.

Typical Performance Data

Frequency (MHz)	Mainline Loss (dB)		Coupling (dB)	Directivity (dB)	Return Loss (dB)		
	In-Out	In-Cpl			In	Out	Cpl
1500.00	0.46	10.63	32.78	35.66	32.94	29.14	
1600.00	0.50	10.40	32.41	36.80	32.04	29.28	
1700.00	0.51	10.22	32.23	38.86	31.39	29.14	
1800.00	0.51	10.10	31.80	41.30	30.68	28.63	
1900.00	0.52	10.02	31.67	40.85	29.79	27.81	
2025.00	0.54	9.97	31.18	35.57	28.38	26.47	
2150.00	0.53	10.01	30.70	31.10	26.78	24.97	
2275.00	0.53	10.12	29.90	27.82	25.17	23.39	
2400.00	0.48	10.30	28.68	25.32	23.70	21.69	
2500.00	0.48	10.49	27.31	23.74	22.69	20.27	



Electrical Schematic



For detailed performance specs & shopping online see web site

Mini-Circuits
ISO 9001 ISO 14001 AS 9100 CERTIFIED
IF/RF MICROWAVE COMPONENTS

P.O. Box 350166, Brooklyn, New York 11235-0003 (718) 934-4500 Fax (718) 332-4661 The Design Engineers Search Engine Provides ACTUAL Data Instantly at minicircuits.com

Notes: 1. Performance and quality attributes and conditions not expressly stated in this specification sheet are intended to be excluded and do not form a part of this specification sheet. 2. Electrical specifications and performance data contained herein are based on Mini-Circuit's applicable established test performance criteria and measurement instructions. 3. The parts covered by this specification sheet are subject to Mini-Circuits standard limited warranty and terms and conditions (collectively, "Standard Terms"); Purchasers of this part are entitled to the rights and benefits contained therein. For a full statement of the Standard Terms and the exclusive rights and remedies thereunder, please visit Mini-Circuits' website at www.minicircuits.com/MCLStore/terms.jsp.

REV. C
M119986
ZABDC10-25HP
WP/TD/CP/AM
090915