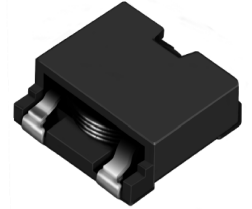
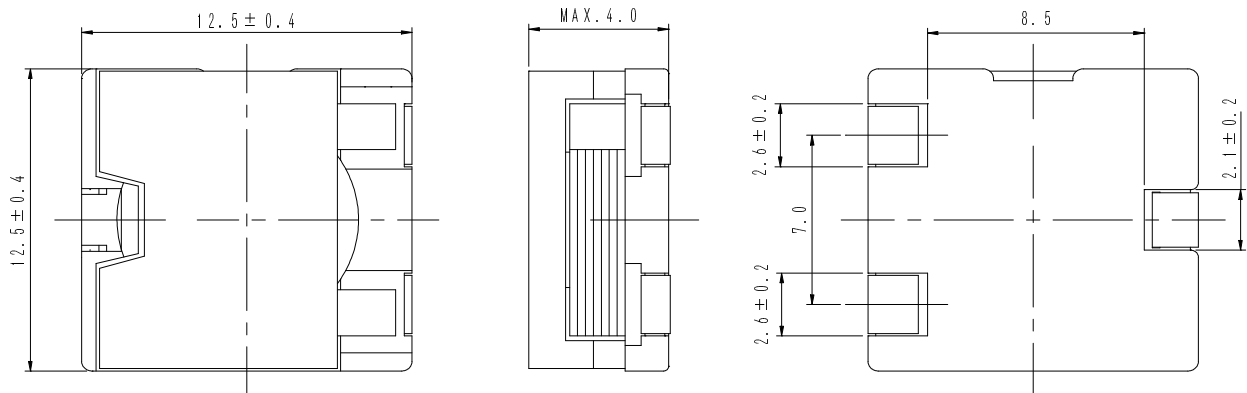
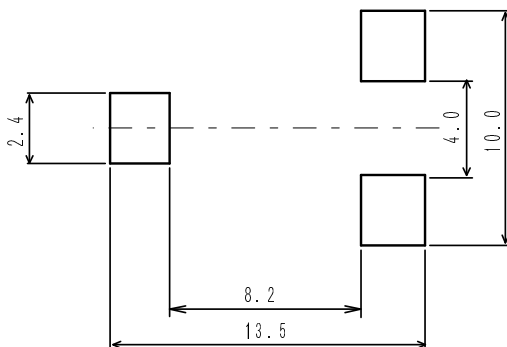
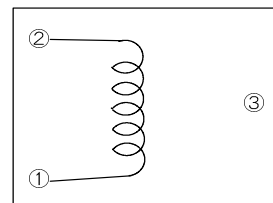


Type: CDEP12D38
◆ Product Description

- 12.9×12.9mm Max.(L×W), 4.0mm Max. Height.
- Inductance Range:0.5~7.7 μ H(Standard Type) ,0.35~5.6 μ H(High Power Type).
- Rated current range:4.8~19.2A(Standard Type) ,6.8~27.2A(High Power Type).
- Temperature rise current range: 5.5~20.0A.
- In addition to the standards versions shown here, custom inductors are also available to meet your exact requirements.


◆ Feature

- Super high current inductors of Low DCR.
- Mn-Zn core used, Flat wire used.
- Ideally used in Notebook PC CPU power supply.
- RoHS Compliance.

◆ Dimensions (mm)

◆ Land Pattern (mm)

◆ Schematics (Bottom)


Type: CDEP12D38
◆ Specification(Standard Type)

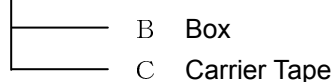
Part Name ※	Stamp	Inductance (μ H) 100kHz/1V	D.C.R. (m Ω) Max.(Typ.) (at 20°C)	Saturation current (A)※1		Temperature Rise Current (A)※2
				(at 20°C)	(at105°C)	
CDEP12D38NP-0R5M□-120	0R5ML	0.5 \pm 20%	1.5(1.19)	19.2(24.0)	15.6(19.5)	20.0
CDEP12D38NP-1R1M□-120	1R1ML	1.1 \pm 20%	2.7(2.20)	12.8(16.0)	10.8(13.5)	16.0
CDEP12D38NP-1R9M□-120	1R9ML	1.9 \pm 20%	4.8(4.00)	9.6(12.0)	8.0(10.0)	12.5
CDEP12D38NP-3R0M□-120	3R0ML	3.0 \pm 20%	7.7(6.40)	7.6(9.5)	6.4(8.0)	10.5
CDEP12D38NP-4R3M□-120	4R3ML	4.3 \pm 20%	11.2(9.30)	6.4(8.0)	5.2(6.5)	8.5
CDEP12D38NP-5R9M□-120	5R9ML	5.9 \pm 20%	13.3(11.0)	5.6(7.0)	4.5(5.6)	7.5
CDEP12D38NP-7R7M□-120	7R7ML	7.7 \pm 20%	21.0(17.5)	4.8(6.0)	4.0(5.0)	5.5

◆ Specification(High Power Type)

Part Name ※	Stamp	Inductance (μ H) 100kHz/1V	D.C.R. (m Ω) Max.(Typ.) (at 20°C)	Saturation Current Max.(Typ.) (A)※1		Temperature Rise Current (A)※2
				(at 20°C)	(at105°C)	
CDEP12D38NP-0R3M□-88	0R3MS	0.35 \pm 20%	1.5(1.19)	27.2(34.0)	22.0(27.5)	20.0
CDEP12D38NP-0R8M□-88	0R8MS	0.8 \pm 20%	2.7(2.20)	18.0(22.5)	14.8(18.5)	16.0
CDEP12D38NP-1R4M□-88	1R4MS	1.4 \pm 20%	4.8(4.00)	13.2(16.5)	11.0(13.8)	12.5
CDEP12D38NP-2R2M□-88	2R2MS	2.2 \pm 20%	7.7(6.40)	10.8(13.5)	8.8(11.0)	10.5
CDEP12D38NP-3R2M□-88	3R2MS	3.2 \pm 20%	11.2(9.30)	9.2(11.5)	7.4(9.2)	8.5
CDEP12D38NP-4R3M□-88	4R3MS	4.3 \pm 20%	13.3(11.0)	7.8(9.7)	6.3(7.9)	7.5
CDEP12D38NP-5R6M□-88	5R6MS	5.6 \pm 20%	21.0(17.5)	6.8(8.5)	5.4(6.8)	5.5

※ Description of part name

CDEP12D38NP-0R5M□-120



※1.Saturation Current: The DC current at which the inductance decreases to 75% of it's nominal value.

 ※2 Temperature rise current:The DC current at which the temperature rise is $\Delta t=40^{\circ}\text{C}$.($T_a=20^{\circ}\text{C}$)