

### With fuse holders

A range of chassis mount IEC 60320 inlet power entry modules which combine single or twin fuse holders and a high level of suppression, within a compact and lightweight enclosure.

Cost effective solution for business, consumer, medical equipment, VDUs, computers, vending machines and many other general purpose applications.

- Snap-in or screw fit
- Current ratings from 1A to 10A
- Integral single or twin fuse holder
- Compact, lightweight design
- Medical versions available

### Mechanical Specifications

**Manufacture:** metal case with built-in power line connector according to IEC 60320 & EN 60320 and fuse holder for 1 (F.-P) or 2 (F.-Q) fuses 5 x 20mm (IEC).

**Connections:** IEC 60320 - Standard plug (INPUT); faston 2x2.8 x 0.5mm or 6.3 x 0.8mm (OUTPUT); ground terminal connected to case.

**Mounting:** F.B- screw mounting, F.C- Snap-in mounting.



### Electrical Specifications

**Rated voltage ( $V_R$ ):** max 250V, 50/60Hz

**Rated current ( $I_R$ ):** referred to room temperature = 40°C

**Leakage current ( $I_L$ ):** at 220V, 50Hz, max value

**Voltage test ( $2_s$ ):** line to ground 3000Vdc or 1800Vac  
line to line 1700Vdc

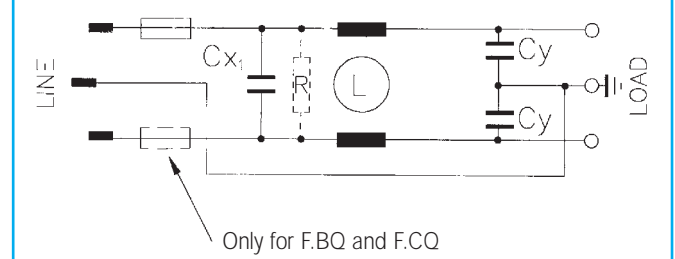
**Climatic category:** HPF (25/085/21):

Temperature range: -25°C to +85°C

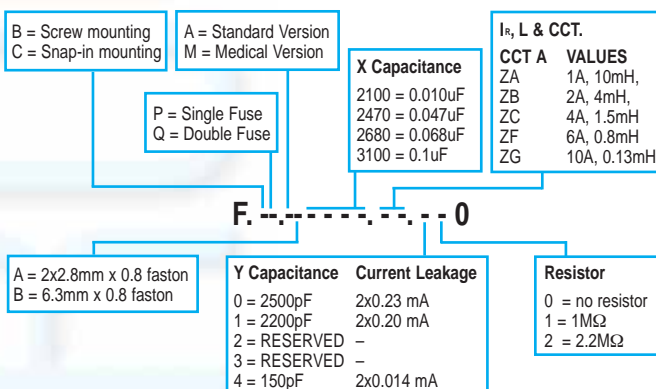
### Filter Range

Code	$I_R$ (A)	L (mH)	$C_{X1}$ ( $\mu$ F)	$C_Y$ (pF)	$I_L$ (mA)
F.--AB.2680.ZA.100	1	2x10	0.068	2x2200	2x0.2
F.--AB.2680.ZB.100	2	2x4	0.068	2x2200	2x0.2
F.--AB.2680.ZC.100	4	2x1.5	0.068	2x2200	2x0.2
F.--AB.2680.ZF.100	6	2x0.8	0.068	2x2200	2x0.2
F.--AB.2680.ZG.100	10	2x0.13	0.068	2x2200	2x0.2

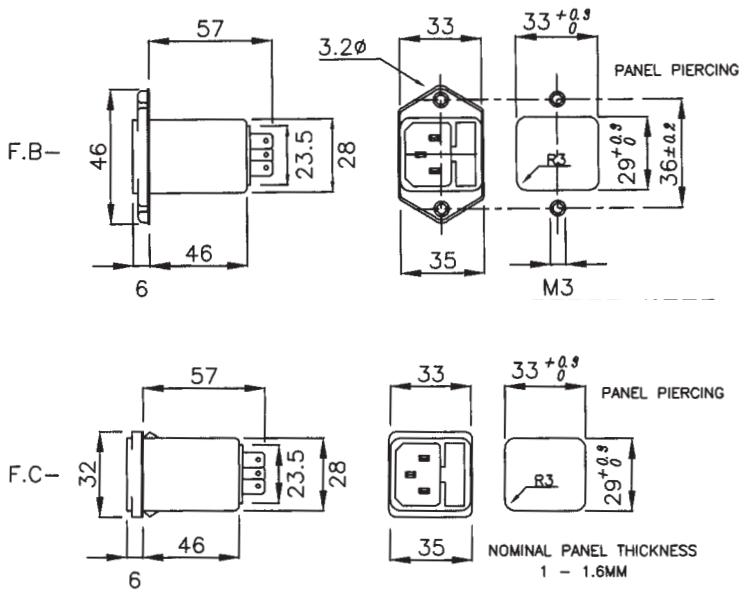
### Circuit diagram



### Available Variants



## Dimensions (mm) and connections



F.---(A or B).  
ALTERNATE OUTPUT TERMINATIONS

A 2 x 2.8MM x 0.8MM FASTON

B 6.3MM x 0.8MM FASTON

Insertion loss (typical): — Asymmetrical (line to ground)    - - - Symmetrical (line to line)

