

GOG9xx03W

THREE PHASE AC-DC BRIDGE

- Fuse protection
- Temperature sensors
- Snubber for SCR's protections
- Water cooling
- Lowest overall dimensions

LINE VOLTAGE UP TO 500V

DC OUTPUT CURRENT 350A

GOG9xx03W

Line to line voltage		400	500
----------------------	--	------------	------------

Characteristic		Conditions	Value	Value
I _{DC}	DC output current		350 A	350 A
V _{INS} (rms)	Insulation voltage		3000 V	3000 V

THYRISTOR CHARACTERISTICS

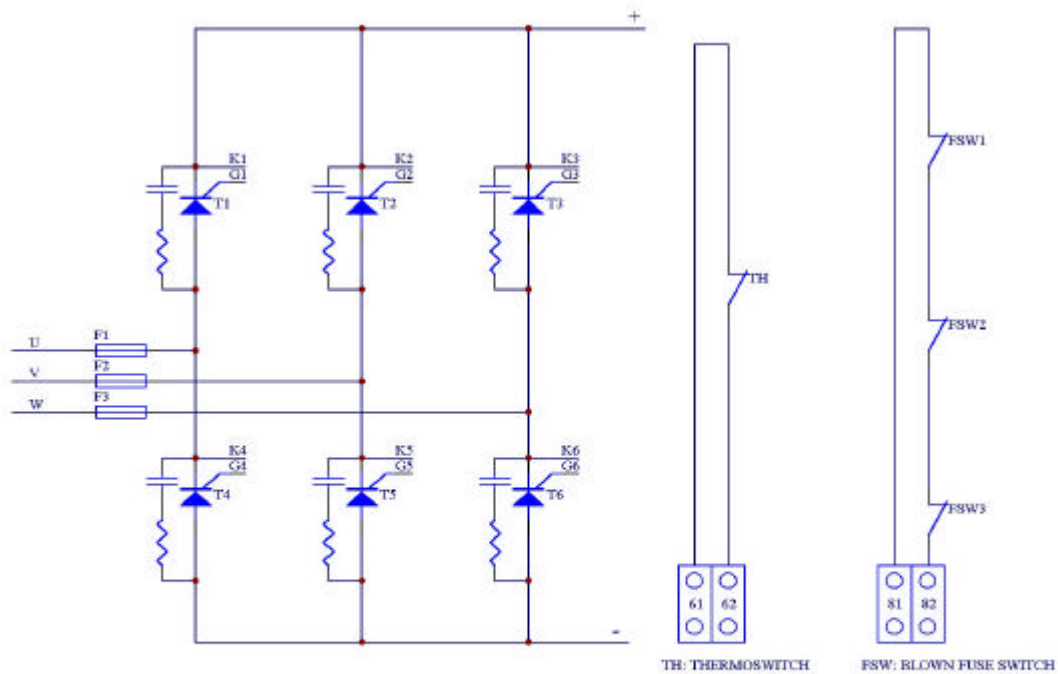
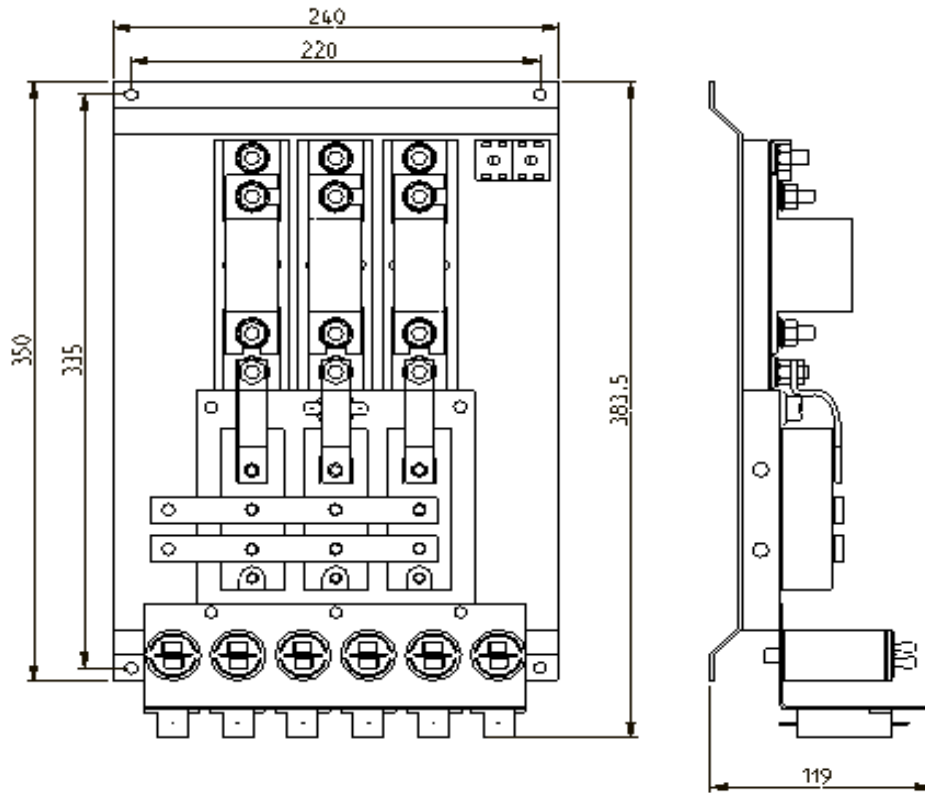
V _{GT}	Gate trigger voltage	T _j = 25 °C, V _D = 5 V	3 V	3 V
I _{GT}	Gate trigger current	T _j = 25 °C, V _D = 5 V	300 mA	300 mA
dV/dt	Critical rate of rise off-state voltage	T _j = 125 °C	1000 V/us	1000 V/us
V _{RRM}	Blocking Voltage	T _j = 125 °C	1200 V	1600 V

FUSE TYPE SIBA 2041220.200

V _{NF}	Rated voltage		690 V	690 V
I _{NF}	Rated current		200 A	200 A

MECHANICAL AND THERMAL CHARACTERISTICS

	Width		240 mm	240 mm
	Depth		119 mm	119 mm
	Height		384 mm	384 mm
	Mass		20 kg	20 kg
T _w max	Max water Temp.		30 °C	30 °C
T _{stg}	Storage temperature		-40/60 °C	-40/60 °C



61-62: THERMOSWITCH CIRCUIT CONNECTION
81-82: BLOWN FUSE SWITCH CIRCUIT CONNECTION

In the interest of product improvement Green Power Semiconductors reserves the right to change any specification given in this data sheet without notice.