

NOTES:

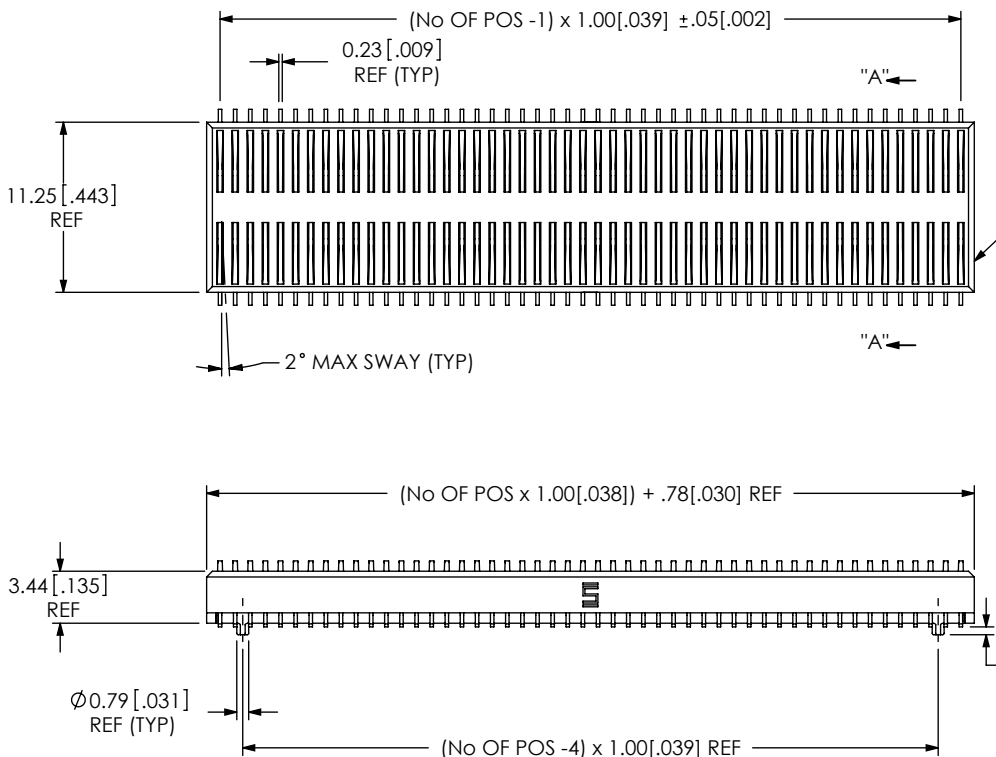
D

1. Ⓞ REPRESENTS A CRITICAL DIMENSION.
2. BURR ALLOWANCE: .038[.0015] MAX ON TAILS.
3. MINIMUM PUSHOUT FORCE: .22 KG [.500 LB]
4. MAXIMUM ALLOWABLE BOW: .05[.002] MM/MM[IN/IN] AFTER ASSEMBLY.
5. PARTS TO BE PACKAGED IN TRAYS AS STANDARD.

No. OF POSITIONS	COPLANARITY
20-30	0.10 [.004]
31-50	0.15 [.006]

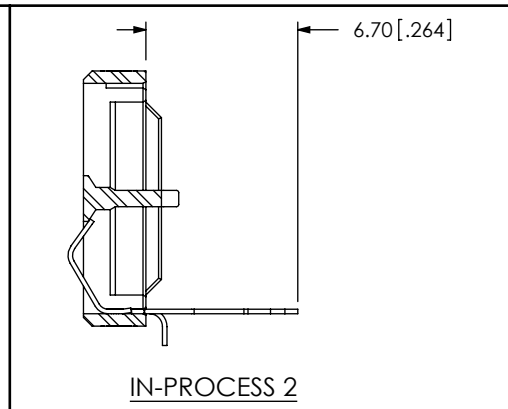
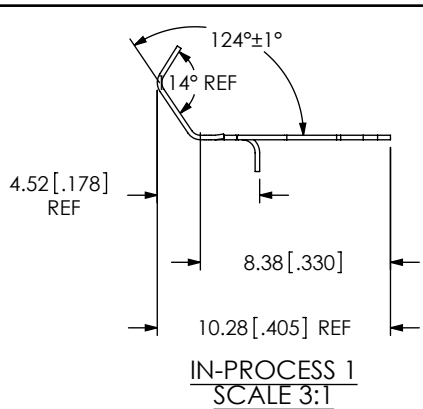
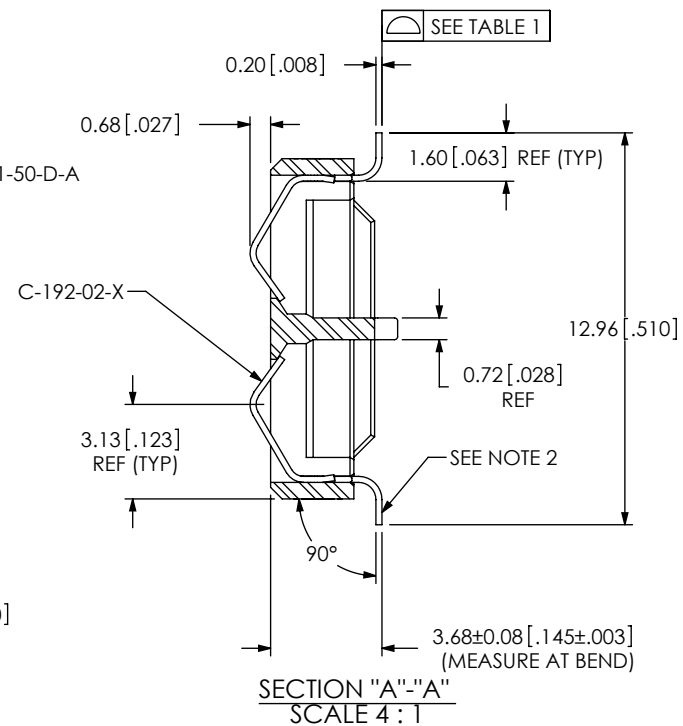
FIG 1
(HSDC1-150-01-X-D-A SHOWN)

DO NOT
SCALE FROM
THIS PRINT



HSDC1-1XX-XX-X-D-A-XX

- No OF POSITIONS
-20 THRU -50
(PER ROW)
- LEAD STYLE
-01: SURFACE MOUNT
(USE C-192-02-X)
- OPTION
-P: PICK & PLACE PAD
-TR: TAPE & REEL
- ALIGNMENT PIN
-A: ALIGNMENT PIN
- ROWS
-D: DOUBLE ROW
- PLATING SPECIFICATION
-S: SELECTIVE GOLD (USE C-192-02-S)
-H: HEAVY GOLD (USE C-192-02-H)



ASSEMBLY OPERATION	START-UP INSPECTION INSPECT CODE A	IN-PROCESS INSPECTION INSPECT CODE B
FORM C-192-02-X		C5
FILL C-192-02-X	C2, C10	C4, C6, C9

THE FOLLOWING CPC'S ARE INTENTIONALLY OMITTED OR DELETED: C1, C3

UNLESS OTHERWISE SPECIFIED, DIMENSIONS ARE IN MILLIMETERS. TOLERANCES ARE:
DECIMALS ANGLES
X.X: ±0.3[.01]
X.XX: ±0.13[.005]
X.XXX: ±0.051[.0020]

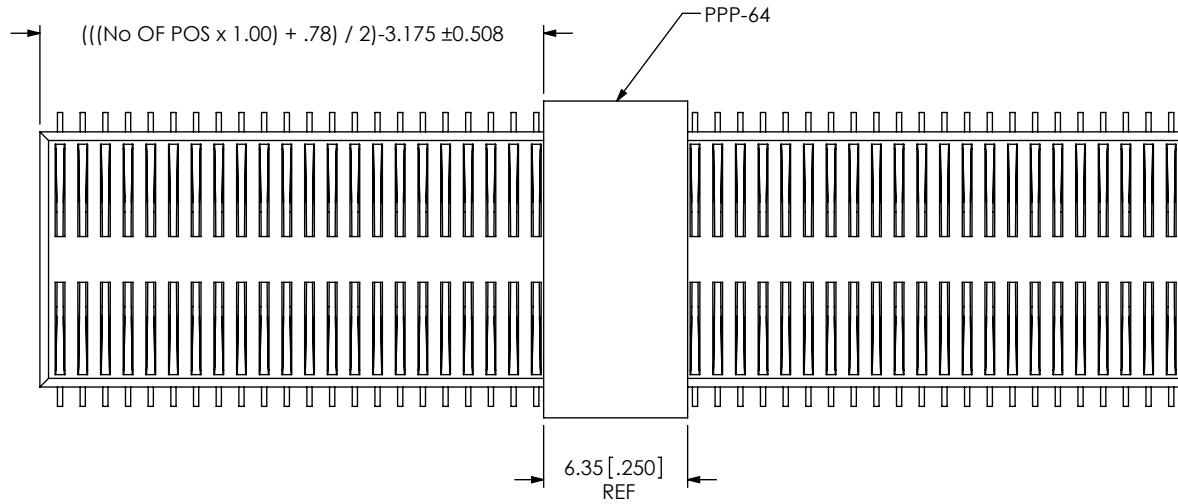
PROPRIETARY NOTE
THIS DOCUMENT CONTAINS INFORMATION CONFIDENTIAL AND PROPRIETARY TO SAMTEC, INC. AND SHALL NOT BE REPRODUCED OR TRANSFERRED TO OTHER DOCUMENTS OR DISCLOSED TO OTHERS OR USED FOR ANY PURPOSE OTHER THAN THAT WHICH IT WAS OBTAINED WITHOUT THE EXPRESSED WRITTEN CONSENT OF SAMTEC, INC.


520 PARK EAST BLVD, NEW ALBANY, IN 47150
PHONE: 812-944-6733 FAX: 812-948-5047
e-Mail: info@SAMTEC.com code: 55322

MATERIAL: DO NOT SCALE DRAWING SHEET SCALE: 2:1
INSULATOR: V143XL, COLOR: BLACK
CONTACT: BeCu

DESCRIPTION:
HIGH SPEED DUAL COMPRESSION 1MM
DWG. NO.
HSDC1-1XX-XX-X-D-A-XX
BY: B RAY 08/24/2007 SHEET 1 OF 2

FIG 2
(HSDC1-150-0T-X-D-A-P SHOWN)



<p>PROPRIETARY NOTE THIS DOCUMENT CONTAINS INFORMATION CONFIDENTIAL AND PROPRIETARY TO SAMTEC, INC. AND SHALL NOT BE REPRODUCED OR TRANSFERRED TO OTHER DOCUMENTS OR DISCLOSED TO OTHERS OR USED FOR ANY PURPOSE OTHER THAN THAT WHICH IT WAS OBTAINED WITHOUT THE EXPRESSED WRITTEN CONSENT OF SAMTEC, INC.</p> <p>DO NOT SCALE DRAWING</p> <p>SHEET SCALE: 2:1</p>			
	<p>520 PARK EAST BLVD, NEW ALBANY, IN 47150 PHONE: 812-944-6733 FAX: 812-948-5047 e-Mail: info@SAMTEC.com code: 55322</p>		
	<p>DESCRIPTION: HIGH SPEED DUAL COMPRESSION 1MM</p>		
	<p>DWG. NO. HSDC1-1XX-XX-X-D-A-XX</p>		
	BY: B RAY	08/24/2007	SHEET 2 OF 2