

# Power Splitter



**Notes:**

- Non-catalog model. Please consult factory for price and delivery.
- General Quality Control Procedures and Environmental Specifications are given in [Mini-Circuits Guarantees Quality](#). Hi-Rel, MIL description are given in [Hi-Rel and MIL](#)
- Prices and Specifications subjects to change without notice.

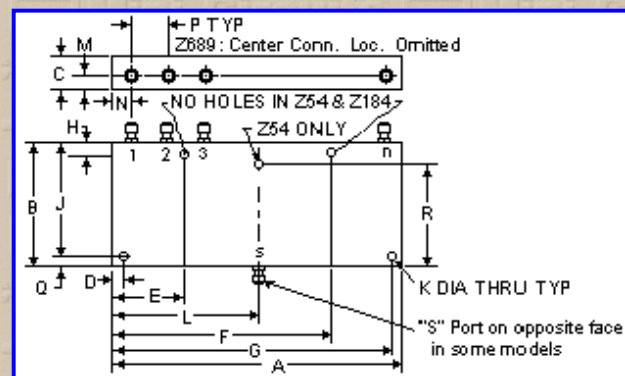
## ZC4PD-ED6385/2 4 Way-0°

Frequency MHz	Isolation, dB						Insertion Loss, dB Above 6.0dB						Phase Unbalance Degrees			Amplitude Unbalance, dB		
	L		M		U		L		M		U		L	M	U	L	M	U
$f_L - f_U$	Typ.	Min.	Typ.	Min.	Typ.	Min.	Typ.	Max.	Typ.	Max.	Typ.	Max.	Max.	Max.	Max.	Max.	Max.	Max.
500-1000																		

L=low range( $f_L$  to  $10f_L$ ) M=mid range( $10f_L$  to  $f_U/2$ ) U=upper range( $f_U/2$  to  $f_U$ )

**Pin Connections**

Port	Sum	Port 1	Port 2	Port 3	Port 4
bh	S	1	2	3	4



**Case Style - Z184 (inch,mm) weight: 59 grams.**

A	B	C	D	E	F	G	H	J
2.26	2.00	.70	.200			2.060		
57.404	50.800	17.780	5.080			52.324		

K	L	M	N	P	Q	R	S	T
.125	1.13	.35	.38	.500	.200			
3.175	28.702	8.890	9.652	12.700	5.080			

Tolerance: .x ± .1 .xx ± .03 .xxx ± .015 inch.

**Material and Finish:**

Case material: aluminum alloy. Finish: iridite per MIL-C-5541

**Connectors:**

Connectors: Female SMA only.

FREQ (MHz)	Insertion Loss (dB)				Amplitude Unbalance (dB)	Isolation (dB)			Phase Unbalance (Degrees)	FREQ (MHz)	VSWR S	VSWR 1	VSWR 2	VSWR 3	VSWR
	S-1	S-2	S-3	S-4		1-2	2-3	3-4							
500.00	6.18	6.20	6.20	6.18	0.030	12.10	18.70	12.17	0.23	500.00	1.15	1.16	1.16	1.16	1.16
545.45	6.24	6.25	6.26	6.24	0.020	13.57	19.46	13.66	0.41	545.45	1.32	1.15	1.15	1.15	1.16
590.91	6.44	6.44	6.44	6.44	0.010	15.05	20.25	15.18	0.60	590.91	1.48	1.15	1.15	1.16	1.16
636.36	6.54	6.53	6.54	6.53	0.010	16.56	21.22	16.71	0.77	636.36	1.61	1.16	1.16	1.17	1.17
681.82	6.56	6.53	6.54	6.55	0.020	17.97	22.32	18.14	0.82	681.82	1.69	1.17	1.17	1.17	1.18
727.27	6.72	6.69	6.67	6.70	0.050	19.02	23.39	19.16	0.80	727.27	1.73	1.18	1.17	1.18	1.18
772.73	6.62	6.59	6.59	6.60	0.030	20.03	24.79	20.14	0.83	772.73	1.71	1.18	1.18	1.18	1.19
818.18	6.59	6.56	6.56	6.58	0.030	20.63	26.03	20.68	0.76	818.18	1.65	1.18	1.17	1.18	1.19
863.64	6.49	6.47	6.47	6.48	0.020	21.57	27.69	21.57	0.82	863.64	1.64	1.17	1.16	1.17	1.18
909.09	6.32	6.32	6.33	6.34	0.020	22.55	29.33	22.48	0.84	909.09	1.44	1.17	1.15	1.17	1.17
954.55	6.39	6.37	6.39	6.40	0.020	24.14	31.40	23.98	0.82	954.55	1.32	1.15	1.14	1.15	1.16
1000.00	6.27	6.26	6.28	6.27	0.020	26.22	33.70	26.00	0.97	1000.00	1.21	1.13	1.12	1.13	1.14
1070.00	6.32	6.31	6.32	6.32	0.020	31.50	38.13	31.23	1.05	1070.00	1.08	1.09	1.08	1.10	1.11
1140.00	6.33	6.31	6.30	6.32	0.030	38.75	41.47	41.61	1.23	1140.00	1.06	1.07	1.06	1.07	1.08
1210.00	6.38	6.35	6.35	6.36	0.030	33.99	38.88	35.71	1.14	1210.00	1.10	1.06	1.05	1.06	1.07
1280.00	6.34	6.31	6.30	6.31	0.040	30.36	35.46	31.04	1.12	1280.00	1.12	1.06	1.05	1.06	1.07
1350.00	6.38	6.34	6.34	6.35	0.040	29.36	33.05	29.61	1.11	1350.00	1.10	1.07	1.06	1.07	1.07
1420.00	6.35	6.32	6.32	6.34	0.040	30.04	31.51	30.01	1.25	1420.00	1.06	1.07	1.06	1.08	1.08
1490.00	6.40	6.35	6.37	6.40	0.050	32.26	30.65	31.89	1.45	1490.00	1.05	1.06	1.06	1.07	1.07
1560.00	6.45	6.39	6.40	6.45	0.060	36.59	30.44	35.28	1.58	1560.00	1.06	1.05	1.05	1.06	1.06
1630.00	6.47	6.40	6.41	6.45	0.070	45.30	30.91	39.37	1.77	1630.00	1.04	1.04	1.04	1.05	1.04
1700.00	6.42	6.37	6.38	6.41	0.050	35.43	32.29	33.68	1.84	1700.00	1.05	1.04	1.05	1.05	1.04
1733.33	6.46	6.42	6.41	6.43	0.050	31.28	33.41	30.33	1.80	1733.33	1.10	1.05	1.06	1.06	1.05
1766.67	6.49	6.45	6.45	6.47	0.040	28.10	34.91	27.47	1.80	1766.67	1.16	1.06	1.07	1.07	1.06
1800.00	6.48	6.44	6.43	6.44	0.050	25.44	36.66	24.95	1.88	1800.00	1.23	1.09	1.10	1.10	1.09
1833.33	6.57	6.54	6.52	6.52	0.050	23.29	38.79	22.88	1.85	1833.33	1.32	1.11	1.12	1.12	1.11
1866.67	6.61	6.59	6.57	6.58	0.030	21.49	40.25	21.15	1.88	1866.67	1.43	1.13	1.15	1.14	1.14
1900.00	6.71	6.67	6.66	6.66	0.050	19.91	39.21	19.59	1.88	1900.00	1.54	1.17	1.18	1.18	1.17
1933.33	6.74	6.71	6.70	6.69	0.040	18.73	36.74	18.42	1.71	1933.33	1.66	1.21	1.22	1.22	1.21
1966.67	6.89	6.87	6.86	6.85	0.040	17.69	34.14	17.41	1.75	1966.67	1.79	1.24	1.26	1.25	1.25
2000.00	7.05	7.03	7.02	7.01	0.040	16.87	31.96	16.58	1.43	2000.00	1.91	1.29	1.30	1.30	1.29



Distribution Centers: NORTH AMERICA 800-654-7949 • 417-335-5935 • Fax 417-335-5945 • EUROPE • 44-1252-832600 • Fax 44-1252-837010

ISO 9001 CERTIFIED

INTERNET <http://www.minicircuits.com>

P.O.Box 350166, Brooklyn, New York 11235-0003 (718) 934-4500 Fax (718) 332-4661

[Back](#)

# i2 Technologies US, Inc.

## HTML Pages converted to PDF Document

This document contain component information from the manufacturer's website which are not available in a revision controlled document from the manufacturer. To facilitate the addition of these parts into the Electronics Database, we are converting the HTML pages related to that part, from the manufacturer's website into Adobe PDF format. The contents of this document is based on the information provided on the manufacturer's website, therefore the information may have been changed by the manufacturer since this was created.

