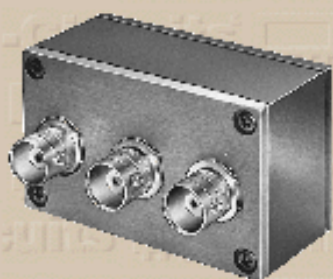


Directional Coupler



ZDC-10-2

Frequency MHz	Coupling dB		Mainline Loss dB			Directivity dB			VSWR (:1)	Power INPUT, W					
	$f_L - f_U$	Nom.	Flatness	L Typ.	M Typ.	U Typ.	L Typ.	M Typ.		U Typ.	Typ.	L Max.	MU Max		
250-1000	10.5±0.50	±0.5	1.10	1.40		1.60	1.90	40	25		20	15	1.50		4.0

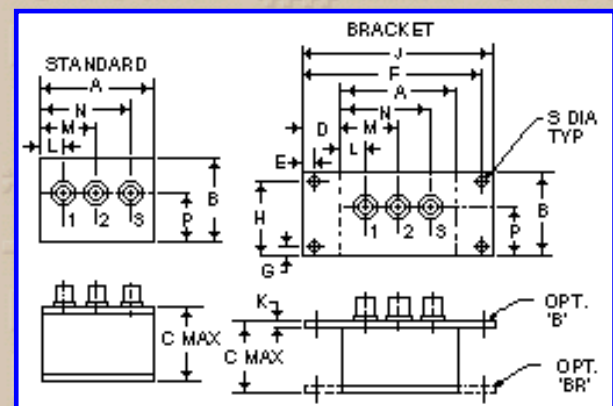
L=low range(f_L to $10f_L$) M=mid range($10f_L$ to $f_U/2$) U=upper range($f_U/2$ to f_U)

Pin Connections

Port	Input	Output	Coupled (forward)	Coupled (reverse)
dd	3	2	1	-
Not Used	Case GND	Termination	GND	
-	-	-	-	-

Notes:

- Mainline Loss includes theoretical power loss at coupled port.
- $L = f_L - 2f_L$
- General Quality Control Procedures and Environmental Specifications are given in [Mini-Circuits Guarantees Quality](#). Hi-Rel, MIL description are given in [Hi-Rel and MIL](#)
- Prices and Specifications subjects to change without notice.



FREQ (MHz)	I. Loss (dB) In-Out	Coupling (dB) In-CPL	Directivity (dB)	Return Loss (dB)		
				In	Out	CPL
250.00	1.47	10.95	37.41	23.05	17.08	17.22
270.00	1.38	10.89	35.98	22.58	16.98	17.10
290.00	1.39	10.88	34.74	22.17	16.88	16.98
310.00	1.50	10.93	33.69	21.79	16.79	16.86
330.00	1.47	10.94	32.58	21.45	16.71	16.76
350.00	1.39	10.89	31.63	21.16	16.64	16.69
370.00	1.51	10.91	30.77	20.91	16.58	16.62
390.00	1.50	10.97	29.93	20.69	16.52	16.55
410.00	1.44	10.90	29.13	20.56	16.45	16.50
430.00	1.48	10.92	28.38	20.28	16.40	16.46
450.00	1.54	10.95	27.82	20.13	16.36	16.43
460.00	1.53	10.97	27.44	20.07	16.35	16.43
470.00	1.46	10.92	27.08	20.01	16.33	16.42
480.00	1.44	10.90	26.76	19.95	16.32	16.42
490.00	1.52	10.93	26.48	19.89	16.31	16.43
500.00	1.54	10.91	26.26	19.84	16.30	16.43
525.00	1.51	10.94	25.53	19.78	16.30	16.48
550.00	1.51	10.90	24.89	19.75	16.32	16.56
575.00	1.54	10.91	24.32	19.75	16.35	16.65
600.00	1.51	10.93	23.75	19.78	16.40	16.79
625.00	1.58	10.89	23.27	19.85	16.47	16.95
650.00	1.51	10.90	22.77	19.92	16.54	17.14
675.00	1.56	10.90	22.37	20.02	16.64	17.35
700.00	1.60	10.88	21.94	20.17	16.75	17.60
725.00	1.48	10.87	21.43	20.34	16.88	17.89

Case Style - M22 (inch,mm) weight: 74 grams.

A	B	C	D	E	F	G	H	J
2.25	1.38	1.24	.50	.150	3.100	.138	1.238	3.25
57.150	35.052	31.496	12.700	3.810	78.740	3.505	31.445	82.550
K	L	M	N	P	Q	R	S	T
.10	.40	1.15	1.86	.64			.150	
2.540	10.160	29.210	47.244	16.256			3.810	

Tolerance: .x ± .1 .xx ± .03 .xxx ± .015 inch.

Material and Finish:

Case material: aluminum alloy. Finish: blue anodized.

Mounting bracket finish: iridite or clear anodize.

Case material: aluminum alloy. Finish: blue paint over iridite.

Mounting:

Mounting bracket available on request. For bracket mounted on the rear, add suffix BR to part number and add \$1.50 to unit cost.

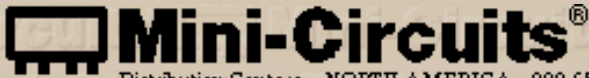
Marking:

For port markings 1, 2, and 3 see specification data sheet.

Connectors:

Connectors: BNC standard, TNC consult factory.

750.00	1.61	10.89	21.20	20.49	17.00	18.19
760.00	1.65	10.89	21.06	20.58	17.07	18.33
770.00	1.62	10.87	20.85	20.66	17.13	18.47
780.00	1.50	10.82	20.66	20.74	17.20	18.62
790.00	1.48	10.83	20.49	20.84	17.27	18.76
800.00	1.57	10.91	20.32	20.93	17.33	18.91
820.00	1.61	10.86	20.17	21.10	17.48	19.24
840.00	1.64	10.88	19.95	21.29	17.64	19.57
860.00	1.46	10.80	19.60	21.50	17.80	19.92
880.00	1.70	10.90	19.41	21.73	17.98	20.28
900.00	1.61	10.82	19.26	21.91	18.15	20.62
920.00	1.59	10.87	18.92	22.12	18.35	20.98
940.00	1.60	10.84	18.71	22.35	18.54	21.32
960.00	1.66	10.85	18.51	22.59	18.76	21.62
980.00	1.63	10.87	18.28	22.79	18.99	21.88
1000.00	1.64	10.89	18.04	22.96	19.21	22.06



Mini-Circuits®
 Distribution Centers NORTH AMERICA 800-654-7949 • 417-335-5935 • Fax 417-335-5945 • EUROPE • 44-1252-832600 • Fax 44-1252-837010

INTERNET <http://www.minicircuits.com>

P.O.Box 350166, Brooklyn, New York 11235-0003 (718) 934-4500 Fax (718) 332-4661

ISO 9001 CERTIFIED

[Back](#)

i2 Technologies US, Inc.

HTML Pages converted to PDF Document

This document contains component information from the manufacturer's website which are not available in a revision controlled document from the manufacturer. To facilitate the addition of these parts into the Electronics Database, we are converting the HTML pages related to that part, from the manufacturer's website into Adobe PDF format. The contents of this document is based on the information provided on the manufacturer's website, therefore the information may have been changed by the manufacturer since this was created.

