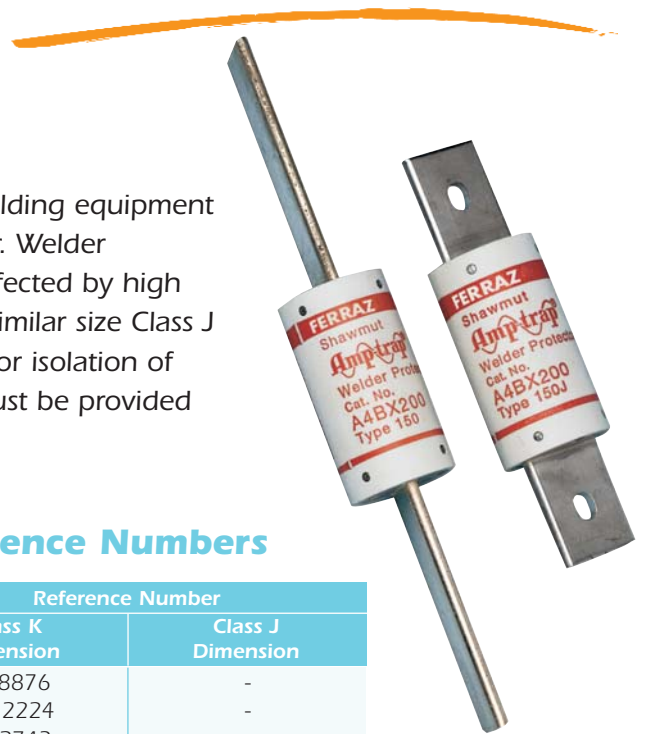


American Fuses Welder Protectors A4BX

WELDER PROTECTORS

Ferraz Shawmut Welder Protectors are special purpose limiters used to provide isolation of faulted welding equipment and protection for the cable drop supplying the welder. Welder Protectors have a high thermal capacity and are less affected by high ambient temperatures and extended weld times than similar size Class J or K fuses*. Welder Protectors should only be applied for isolation of short circuited welding circuits. Overload protection must be provided for by other means.

* Contact us for Class L sizes and rating



Standard Fuse Ampere Ratings, Reference Numbers

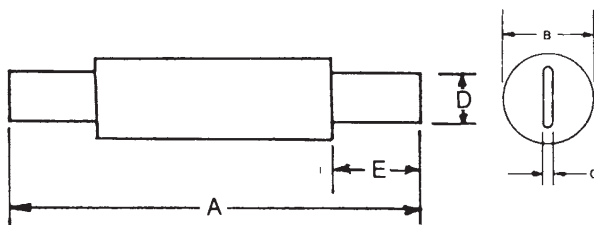
Ampere Rating	Catalog Number		Reference Number	
	Class K Dimension	Class J Dimension	Class K Dimension	Class J Dimension
100	A4BX100-150	-	J218876	-
125	A4BX125-150	-	D212224	-
150	A4BX150-150	-	S212743	-
200	A4BX200-150	A4BX200-150J	H217334	M217844
225	A4BX225-150	-	G211192	-
300	A4BX300-150	A4BX300-150J	J215288	K215795
400	A4BX400-150	A4BX400-150J	N217845	Y218360
500	A4BX500-150	-	M222605	-
600	A4BX600-150	-	F201968	-

Ratings

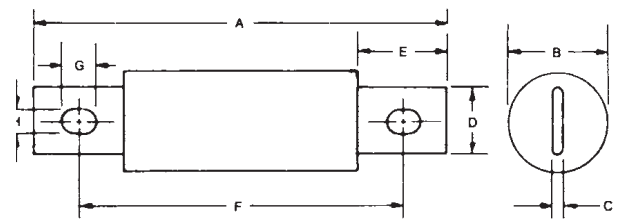
- 600VAC, 200kA I.R.

Approvals

- Ferraz Shawmut Certified



CLASS K



CLASS J

A4BX () - 150; Class K Dimensions

Ampere Rating	Inches							
	A	B	C	D	E	F	G	H
100	7-7/8	1	1/8	23/32	2-5/8	-	-	-
125-200	9-5/8	1-1/2	3/16	1-1/8	3-7/16	-	-	-
225-400	11-5/8	2	1/4	1-5/8	4-7/16	-	-	-
500-600	13-3/8	2-1/2	1/4	2	5-5/16	-	-	-

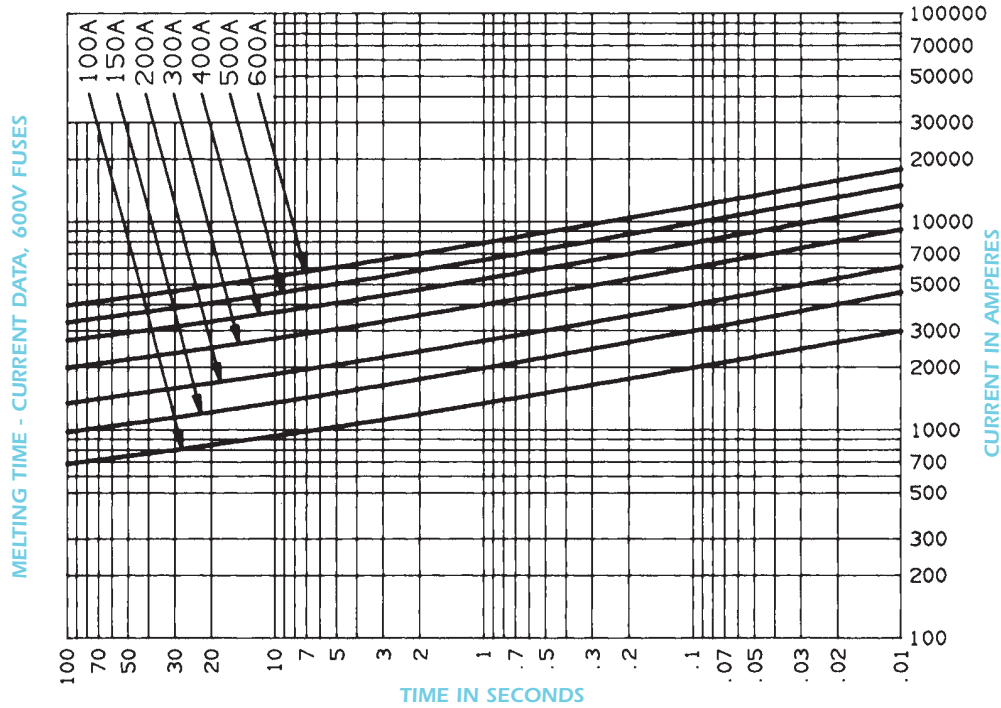
A4BX () - 150J; Class J Dimensions

125-200	5-3/4	1-1/2	3/16	1-1/8	1-1/2	4-3/8	3/8	9/32
225-400	7-1/8	2	1/4	1-5/8	2-3/16	5-1/4	17/32	13/32

Special Purpose Fuses

American Fuses Welder Protectors A4BX

A4BX100 to 600 Types 150, 150J



Peak Let-Thru Current Data - A4BX100 to 600, 600 Volts AC

