

**Ratings**

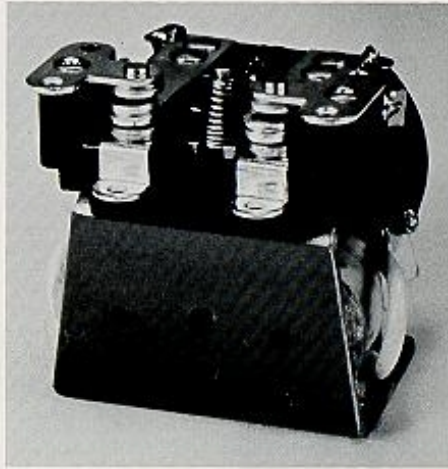
SPDT or DPDT

**Description**

Dual coil construction for sensitivity  
Low cost industrial relay  
High density power capability  
Heavy duty contact switching  
Long life  
Weight: 5.0 ounces  
Terminals: Solder lug  
Enclosure: Open, Standard mounting  
(BOY)

**Performance Data**

Operate Time:  
40ms or less at nominal voltage  
Release Time:  
15ms or less at nominal voltage  
Initial Contact Resistance:  
0.05 ohms maximum  
Insulation Resistance:  
1000 megohms minimum  
Maximum Contact Arrangement:  
Two pole double throw  
Contact Rating (Resistive):  
10 amp @ 26.5VDC  
10 amp @ 110VAC, 60-400Hz  
Dielectric Strength:  
1250V rms at sea level  
Vibration:  
10 to 55Hz at 0.062 inch  
double amplitude  
Shock: 25g operational  
Ambient Temperature: 0°C to +71°C



**Type Designation and Coil Data (at 25°C)**

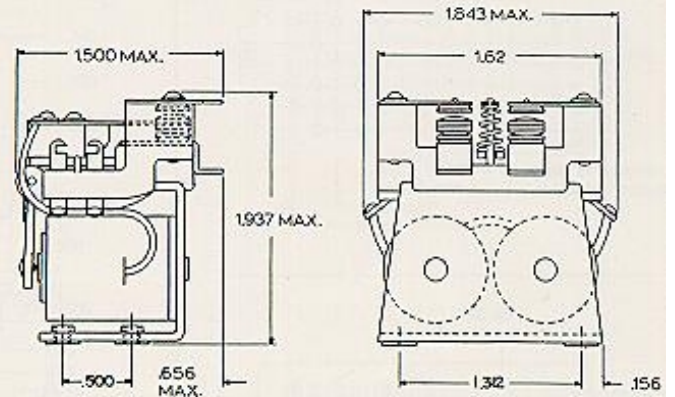
Relay Type	DC Nominal Coil Data		Max. Pick-up Voltage at +25°C
	Volts	Ohms**	
BOY-*D-5.5VDC	5.5	41.6	4.4
BOY-*D-13VDC	13.	258.	10.4
BOY-*D-24VDC	24.	900.	18.
BOY-*D-26.5VDC	26.5	900.	18.
BOY-*D-62VDC	62.	5000.	50.
BOY-*D-87VDC	87.	10000.	69.
BOY-*D-110/120VDC	110/120	15000.	88.

\*Insert contact code when ordering  
\*\*DC resistance ± 10%

**Ordering Information**

BOY  I  II  III

- I. 3 (SPDT) or 6 (DPDT)
- II. A (AC coil) or D (DC coil)
- III. Coil voltage (VAC or VDC)



MOUNTING: #6-32NC-2B TAPPED HOLES (4)  
DIMENSIONAL TOLERANCES .XX = ±.015, .XXX = ±.010  
ALL DIMENSIONS IN INCHES UNLESS OTHERWISE NOTED