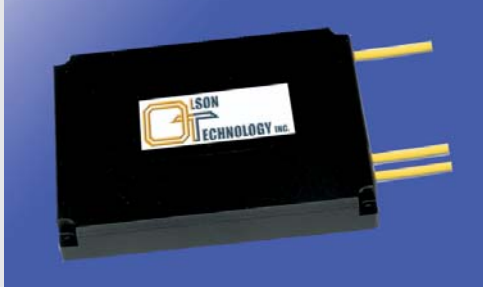


High Isolation Wavelength Division Multiplexer

Features / Benefits



Standalone Style



OTCP Style

FEATURES

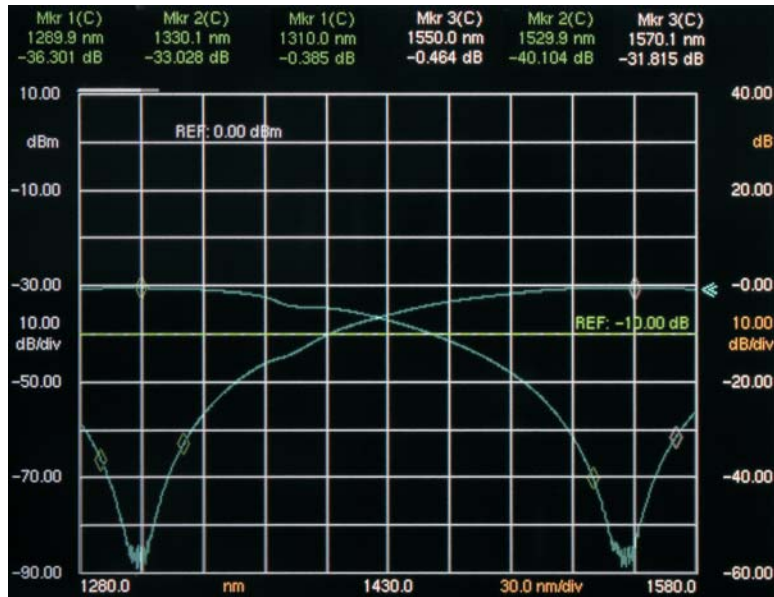
- All Fiber Construction
- High Reliability
- Outstanding Optical Performance
- Optimized for 1310nm and 1550nm
- Optical Isolation is 30dB minimum over ± 20 nm Windows Centered on 1310nm and 1550nm.
- Low Insertion Loss

Specifications

Parameter	Specification	Units
Center Wavelength (λ_c)	1310 or 1550	nm
Bandwidth	± 20	nm
Max. Insertion Loss	0.75	dB
Min. Wavelength Isolation	30	dB
Typ. Isolation in 10 nm BW	40	dB
Max. Polarization Stability	0.15	dB
Min. Directivity	55	dB
Max. Temperature Coefficient	0.003	dB/°C
Operating Temperature	-20 to +75	°C
Storage Temperature	-40 to +85	°C
Package Dimensions		
Standalone Dimensions	100 x 80 x 10	mm
OTCP Dimensions	127 x 203 x 32 5.0 x 8.0 x 1.27	mm in.

APPLICATIONS

- Multiplexing/Demultiplexing
- Fiber Optic CATV
- Fiber Optic Test Equipment
- Bi-directional Communication Over a Single Fiber
- Double System Capacity Over a Single Fiber
- Line Relay Equipment



Ordering Information

OTCP Housing

OTWDM-35H-1X2-SA SC/APC connector
 OTWDM-35H-1X2-FA FC/APC connector

Standalone

WDM-35H-1X2-SA SC/APC connector
 WDM-35H-1X2-FA FC/APC connector

Cable Diameter = 2mm
 Cable Length = 0.5 Meter
 Package = 100 x 80 x 10mm