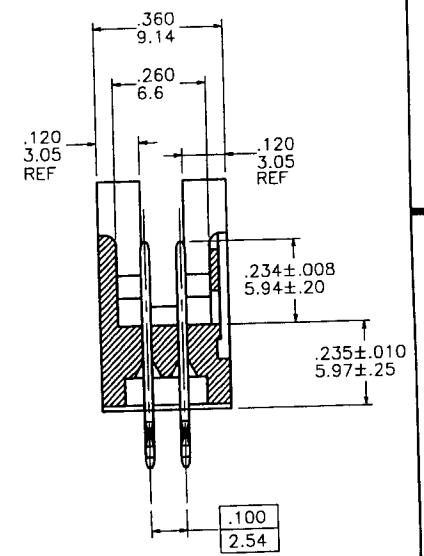
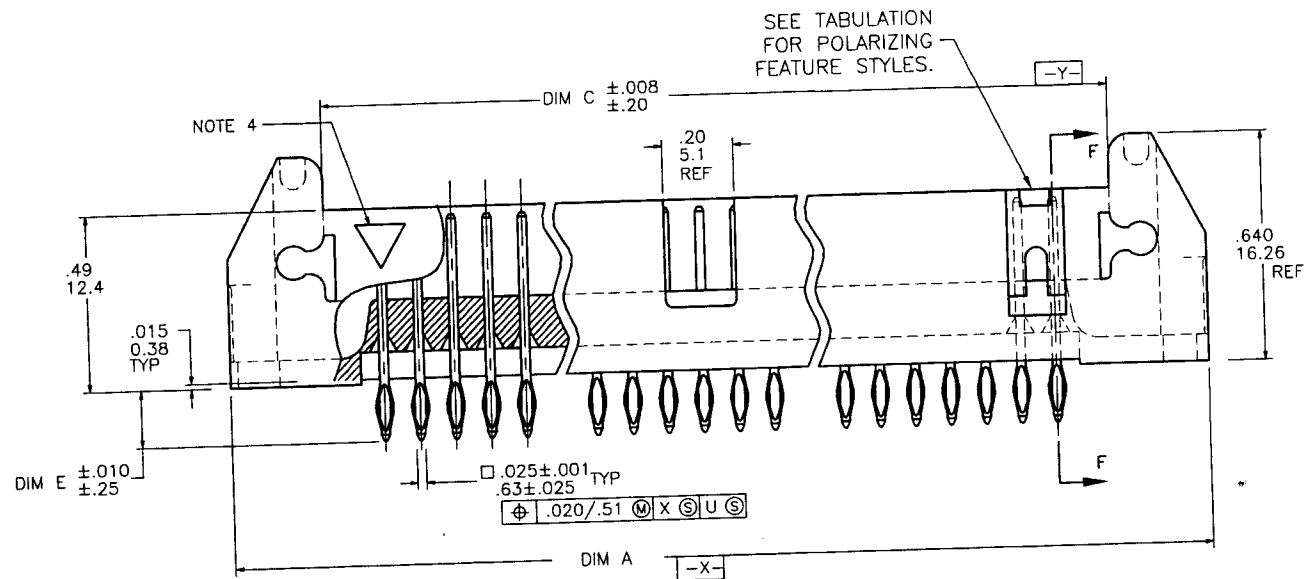
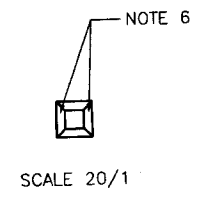
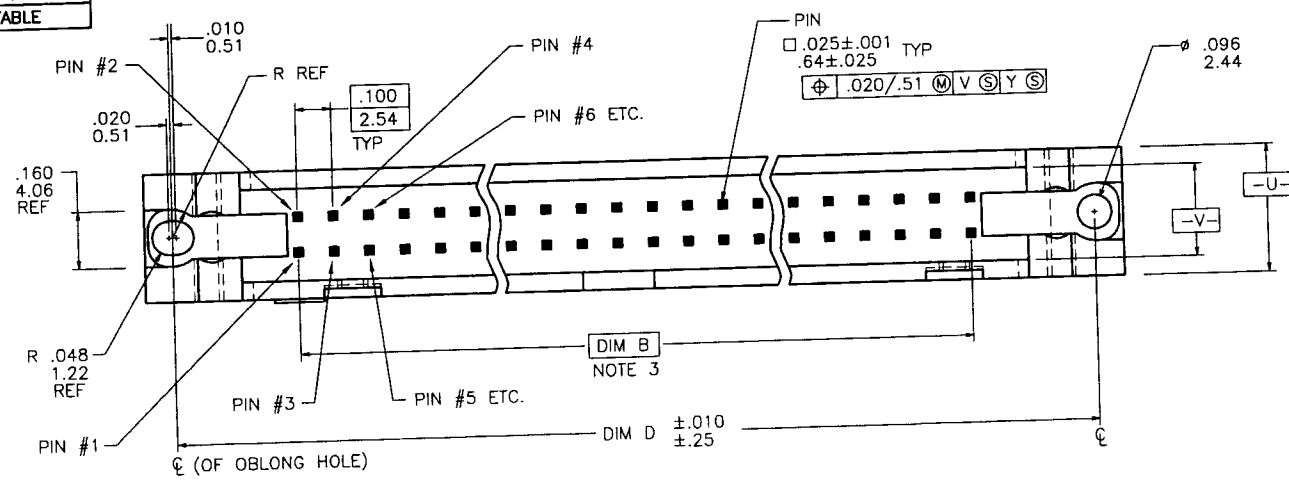


Tous droits strictement réservés. Reproduction ou communication à des tiers interdite sous quelque forme que ce soit sans autorisation écrite du propriétaire. Propriété de c FCI. Droits de reproduction FCI.

All rights strictly reserved. Reproduction or issue to third parties in any form whatever is not permitted without written authority from the proprietor. Property of FCI. Copyright FCI.

PRODUCT NUMBER  
SEE TABLE



mat'l. code				tolerances unless otherwise specified				CUSTOMER COPY		Electronics FCI										
ltr	ecn no	dr	date	linear	.XX ±.01/.3	projection	title	www.fciconnect.com												
T	v94327	DAI	11/15/99		.XXX ±.005/0.13		<b>P.F. HEADER ASS'Y SEA HORSE - 4 WALL</b>	product family QUICKIE		code										
U	C90069	DAI	12/17/99		.XXX ±.0020/0.051			size dwg no		sheet										
V	C00010	DAI	3/3/00	angles	0° ±2'	INCH/MM	product family QUICKIE		code											
W	V00833	DAI	4/10/00	dr	M. CLOUSER 3/1/90	scale 2:1	size dwg no		sheet											
X	V01287	EPK	6/9/00	engr	M. SMYK 3/1/90		A 68710		1 of 13											
Y	V01540	MEM	7/11/00	chr	M. SMYK 3/1/90	A 68710														
AA	V01853	MEM	7/27/00	appd	M. SMYK 3/1/90	A 68710														
sheet index	revision sheet	AA	V	H	H	H	H	S	Y	U	AA	X								
		1	2	3	4	5	6	7	8	9	10	11	12	13						

**Electronics FCI**  
www.fciconnect.com

**P.F. HEADER ASS'Y  
SEA HORSE - 4 WALL**

product family QUICKIE  
size dwg no **68710**  
sheet 1 of 13

cage code **22526**

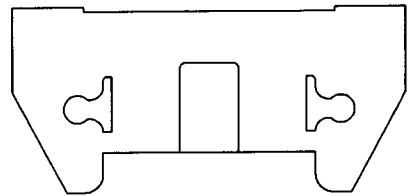
Tous droits strictement réservés. Reproduction ou communication a des tiers interdite sous quelque forme que ce soit sans autorisation écrite du propriétaire. Propriété de c FCI. Droits de reproduction FCI.

All rights strictly reserved. Reproduction or issue to third parties in any form whatever is not permitted without written authority from the proprietor. Property of FCI. Copyright FCI.

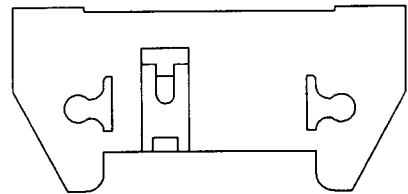


PRODUCT NUMBER  
SEE TABLE

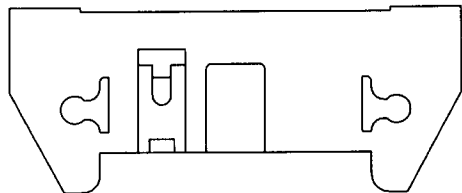
	PLATING	NOTE 6
1	30u"/.76u Au	OVER 50u "/1.27u Ni
2	30u"/.76u GXT	GOLD FLASH
4	30u"/.76u GXT	DUPLEX
5	30u"/.76u	GOLD DUPLEX



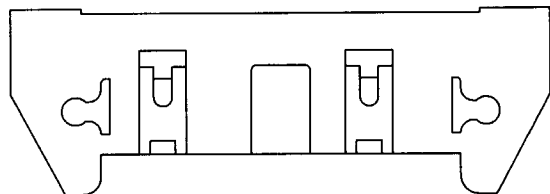
2x5  
STYLE A



2x5  
STYLE B



2x7  
STYLE C



2 X 8 & LARGER  
STYLE D

NOTES:

- BODY MATERIAL; 30% GLASS FILLED POLYESTER FLAME RETARDANT PER UL 94-V0 COLOR-BLUE.  
-1XX TO -6XX BLUE PBT  
-7XX TO -9XX GREY PBT
- UNLESS OTHERWISE SPECIFIED, 1° MAX DRAFT PERMISSIBLE ON ALL SURFACES.
- DIM B BASIC DIM SHALL BE LOCATED SYMMETRICAL TO DATUM -Y-.
- TRIANGLE, LOGO, & PART NO. AND THEIR LOCATIONS OPTIONAL.
- PIN MATERIAL; 3/4 HD. PHOSPHOR BRONZE ALLOY UNS-C51000.
- TWO NON-CRITICAL SIDES OF TIPS NOT PLATED. TYP BOTH ENDS.
- RECOMMENDED MOUNTING SCREW - #2-56 FILLISTER HEAD MACHINE SCREW .25/6.35 LONG FOR .063/1.58 & .094/2.38 BOARDS, .313/7.93 LONG FOR .125/3.18 BOARDS.
- 3 LBS/1.36 KG PIN RETENTION IN BOTH DIRECTIONS.
- LOW PROFILE LATCHES TO BE USED WITH FEMALE CONNECTOR WITHOUT STRAIN RELIEF STANDARD LATCHES TO BE USED WITH FEMALE CONNECTORS WITH STRAIN RELIEF.
- ADD AN "A" AFTER THE 8 DIGIT PART NUMBER FOR CUSTOMER SPECIAL.
- RECOMMENDED PLATED-THRU-HOLE DIMENSIONS ARE:  
DRILLED HOLE: .0453/1.604±.0010/.025 DIA  
COPPER PLATING THICKNESS .001/.025 TO .003/.076  
SOLDER PLATING THICKNESS: .0003/.076 TO .0007/.0178  
OVERALL HOLE SIZE: .040/1.016±.003/.076 DIA

mat'l. code		tolerances unless otherwise specified		CUSTOMER COPY		Electronics www.fciconnect.com		
ltr	ecn no	dr	date	linear	.XX ±.01/3	projection	title	
v					.XXX ±.005/0.13		P.F. HEADER ASS'Y SEA HORSE - 4 WALL	
				angles	.XXX ±.0020/0.051		product family	code
				dr	0° ±2°	INCH/MM	QUICKIE	-
				engr	M. CLOUSER 3/1/90	scale	size	sheet
				chr	M. SMYK 3/1/90	2:1	dwg no	2 of
				appd	M. SMYK 3/1/90	A	68710	
sheet index	revision sheet						cage code	
							22526	

Tous droits strictement reserves. Reproduction ou communication a des tiers interdite sous quelque forme que ce soit sans autorisation ecrite du proprietaire. Propriete de c FCI. Droits de reproduction FCI.

All rights strictly reserved. Reproduction or issue to third parties in any form whatever is not permitted without written authority from the proprietor. Property of FCI. Copyright FCI.



PRODUCT NUMBER	SIZE	STYLE	LATCH	DIM A	DIM B	DIM C	DIM D	DIM E	PIN PLATING
68710-001	2 X 5	A	NONE	1.26/32.00	.400/10.16	.720/18.28	1.100/27.94	.160/4.06	1
-002								.160/4.06	2
-003								.610/15.49	1
-004								.610/15.49	2
-005								.733/18.62	1
-006			NONE					.733/18.62	2
-007			STD.					.160/4.06	1
-008								.160/4.06	2
-009								.610/15.49	1
-010								.610/15.49	2
-011								.733/18.62	1
-012			STD.					.733/18.62	2
-013			LOW PROFILE					.160/4.06	1
-014								.160/4.06	2
-015								.610/15.49	1
-016								.610/15.49	2
-017								.733/18.62	1
-018		A	LOW PROFILE					.733/18.62	2
-019		B	NONE					.160/4.06	1
-020								.160/4.06	2
-021								.610/15.49	1
-022								.610/15.49	2
-023								.733/18.62	1
-024			NONE					.733/18.62	2
-025			STD.					.160/4.06	1
-026								.160/4.06	2
-027								.610/15.49	1
-028								.610/15.49	2
-029								.733/18.62	1
-030			STD.					.733/18.62	2
-031			LOW PROFILE					.160/4.06	1
-032								.160/4.06	2
-033								.610/15.49	1
-034								.610/15.49	2
-035								.733/18.62	1
68710-036	2 X 5	B	LOW PROFILE	1.26/32.00	.400/10.16	.720/18.28	1.100/27.94	.733/18.62	2

mat'l. code				tolerances unless otherwise specified			CUSTOMER COPY		Electronics www.fciconnect.com	
ltr	ecn no	dr	date	linear	.XX ±.01/.3		projection	title		
H					.XXX ±.005/0.13			P.F. HEADER ASS'Y		
					.XXXX ±.0020/0.051			SEA HORSE - 4 WALL		
				angles	0° ±2'		INCH/MM scale 1:1	product family QUICKIE		code
				dr	M. CLOUSER	3/1/90		size  dwg no		sheet
				engr	M. SMYK	3/1/99		A 68710		3 of
				chr	M. SMYK	3/1/99				
				appd	M. SMYK	3/1/99				
sheet index	revision sheet									

Tous droits strictement reserves. Reproduction ou communication a des tiers interdite sous quelque forme que ce soit sans autorisation ecrite du propriétaire. Propriete de c FCI. Droits de reproduction FCI.

All rights strictly reserved. Reproduction or issue to third parties in any form whatever is not permitted without written authority from the proprietor. Property of FCI. Copyright FCI.



PRODUCT NUMBER	SIZE	STYLE	LATCH	DIM A	DIM B	DIM C	DIM D	DIM E	PIN PLATING SEE SHT. 2
68710-037	2 X 7	C	NONE	1.46/37.08	.600/15.24	.920/23.37	1.300/33.02	.160/4.06	1
-038								.160/4.06	2
-039								.610/15.49	1
-040								.610/15.49	2
-041								.733/18.62	1
-042			NONE					.733/18.62	2
-043			STD.					.160/4.06	1
-044								.160/4.06	2
-045								.610/15.49	1
-046								.610/15.49	2
-047								.733/18.62	1
-048			STD.					.733/18.62	2
-049			LOW PROFILE					.160/4.06	1
-050								.160/4.06	2
-051								.610/15.49	1
-052								.610/15.49	2
-053								.733/18.62	1
-054	2 X 7	C	LOW PROFILE	1.46/37.08	.600/15.24	.920/23.37	1.300/33.02	.733/18.62	2
-055	2 X 8	D	NONE	1.56/39.62	.700/17.78	1.020/25.91	1.400/35.56	.160/4.06	1
-056								.160/4.06	2
-057								.610/15.49	1
-058								.610/15.49	2
-059								.733/18.62	1
-060			NONE					.733/18.62	2
-061			STD.					.160/4.06	1
-062								.160/4.06	2
-063								.610/15.49	1
-064								.610/15.49	2
-065								.733/18.62	1
-066			STD.					.733/18.62	2
-067			LOW PROFILE					.160/4.06	1
-068								.160/4.06	2
-069								.610/15.49	1
-070								.610/15.49	2
-071								.733/18.62	1
68710-072	2 X 8	D	LOW PROFILE	1.56/39.62	.700/17.78	1.020/25.91	1.400/35.56	.733/18.62	2

mat'l. code				tolerances unless otherwise specified			CUSTOMER COPY		<b>Electronics</b> <small>www.fciconnect.com</small>	
ltr	ecn no	dr	date	linear	.XX ±.01/.3		projection	title		
H					.XXX ±.005/0.13			<b>P.F. HEADER ASS'Y</b> <b>SEA HORSE - 4 WALL</b>		
					.XXXX ±.0020/0.051			product family QUICKIE		
				angles	0° ±2'		INCH/MM	code		
				dr	M. CLOUSER	3/1/90		scale	-	
				enrg	M. SMYK	3/1/99	1:1		sheet	
				chr	M. SMYK	3/1/99		A	4 of	
				appd	M. SMYK	3/1/99	68710			
sheet index	revision sheet									

cage code  
22526


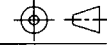
ACAD

Tous droits strictement reserves. Reproduction ou communication a des tiers interdite sous quelque forme que ce soit sans autorisation écrite du propriétaire. Property of FCI. Droits de reproduction FCI.

All rights strictly reserved. Reproduction or issue to third parties in any form whatever is not permitted without written authority from the proprietor. Property of FCI. Copyright FCI.

FCI

PRODUCT NUMBER	SIZE	STYLE	LATCH	DIM A	DIM B	DIM C	DIM D	DIM E	PIN PLATING
68710-073	2 X 10	D	NONE	1.76/44.70	.900/22.86	1.220/30.99	1.600/40.64	.160/4.06	1
-074								.160/4.06	2
-075								.610/15.49	1
-076								.610/15.49	2
-077								.733/18.62	1
-078			NONE					.733/18.62	2
-079			STD.					.160/4.06	1
-080								.160/4.06	2
-081								.610/15.49	1
-082								.610/15.49	2
-083								.733/18.62	1
-084			STD.					.733/18.62	2
-085			LOW PROFILE					.160/4.06	1
-086								.160/4.06	2
-087								.610/15.49	1
-088								.610/15.49	2
-089								.733/18.62	1
-090	2 X 10	D	LOW PROFILE	1.76/44.70	.900/22.86	1.220/30.99	1.600/40.64	.733/18.62	2
-091	2 X 12	D	NONE	1.96/49.78	1.100/27.94	1.420/36.07	1.800/45.72	.160/4.06	1
-092								.160/4.06	2
-093								.610/15.49	1
-094								.610/15.49	2
-095								.733/18.62	1
-096			NONE					.733/18.62	2
-097			STD.					.160/4.06	1
-098								.160/4.06	2
-099								.610/15.49	1
-100								.610/15.49	2
-101								.733/18.62	1
-102			STD.					.733/18.62	2
-103			LOW PROFILE					.160/4.06	1
-104								.160/4.06	2
-105								.610/15.49	1
-106								.610/15.49	2
-107								.733/18.62	1
68710-108	2 X 12	D	LOW PROFILE	1.96/49.78	1.100/27.94	1.420/36.07	1.800/45.72	.733/18.62	2

mat'l. code		tolerances unless otherwise specified		CUSTOMER COPY		 <b>Electronics</b> www.fciconnect.com		
ltr	ecn no	dr	date	linear	.XX ±.01/.3	projection		
H					.XXX ±.005/0.13			
					.XXXX ±.0020/0.051			
				angles	0° ±2'	INCH/MM	title <b>P.F. HEADER ASS'Y</b> <b>SEA HORSE - 4 WALL</b>	
				dr	M. CLOUSER 3/1/90	scale	product family	
				enfr	M. SMYK 3/1/99		QUICKIE	code
				chr	M. SMYK 3/1/99		1:1	size  dwg no
				appd	M. SMYK 3/1/99		A	68710
sheet index	revision sheet						sheet 5 of	


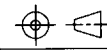
cage code 22526

ACAD

Tous droits strictement reserves. Reproduction ou communication a des tiers interdite sous quelque forme que ce soit sans autorisation ecrite du proprietaire. Propriete de c. FCI. Droits de reproduction FCI.

All rights strictly reserved. Reproduction or issue to third parties in any form whatever is not permitted without written authority from the proprietor. Property of FCI. Copyright FCI.

PRODUCT NUMBER	SIZE	STYLE	LATCH	DIM A	DIM B	DIM C	DIM D	DIM E	PIN PLATING
68710-109	2 X 13	D	NONE	2.06/52.32	1.200/30.48	1.520/38.61	1.900/48.26	.160/4.06	1
-110								.160/4.06	2
-111								.610/15.49	1
-112								.610/15.49	2
-113								.733/18.62	1
-114			NONE					.733/18.62	2
-115			STD.					.160/4.06	1
-116								.160/4.06	2
-117								.610/15.49	1
-118								.610/15.49	2
-119								.733/18.62	1
-120			STD.					.733/18.62	2
-121			LOW PROFILE					.160/4.06	1
-122								.160/4.06	2
-123								.610/15.49	1
-124								.610/15.49	2
-125								.733/18.62	1
-126	2 X 13	D	LOW PROFILE	2.06/52.32	1.200/30.48	1.520/38.61	1.900/48.26	.733/18.62	2
-127	2 X 15	D	NONE	2.26/57.40	1.400/35.56	1.720/43.69	2.100/53.34	.160/4.06	1
-128								.160/4.06	2
-129								.610/15.49	1
-130								.610/15.49	2
-131								.733/18.62	1
-132			NONE					.733/18.62	2
-133			STD.					.160/4.06	1
-134								.160/4.06	2
-135								.610/15.49	1
-136								.610/15.49	2
-137								.733/18.62	1
-138			STD.					.733/18.62	2
-139			LOW PROFILE					.160/4.06	1
-140								.160/4.06	2
-141								.610/15.49	1
-142								.610/15.49	2
-143								.733/18.62	1
68710-144	2 X 15	D	LOW PROFILE	2.26/57.40	1.400/35.56	1.720/43.69	2.100/53.34	.733/18.62	2

mat'l. code				tolerances unless otherwise specified			CUSTOMER COPY		 <b>Electronics</b> <small>www.fciconnect.com</small>	
ltr	ecn no	dr	date	linear	.XX ±.01/.3			projection	title	
H					.XXX ±.005/0.13				P.F. HEADER ASS'Y	
					.XXXX ±.0020/0.051				SEA HORSE - 4 WALL	
				angles	0' ±2'			 INCH/MM scale 1:1	product family QUICKIE	
				dr	M. CLOUSER	3/1/90	size		code	
				engr	M. SMYK	3/1/99	dwg no		-	
				chr	M. SMYK	3/1/99	A 68710		sheet 6 of	
				appd	M. SMYK	3/1/99				
sheet index	revision sheet									

cage code 22526

ACAD

Tous droits strictement réservés. Reproduction ou communication à des tiers interdite sous quelque forme que ce soit sans autorisation écrite du propriétaire. Propriété de C FCI. Droits de reproduction FCI.

All rights strictly reserved. Reproduction or issue to third parties in any form whatever is not permitted without written authority from the proprietor. Property of FCI. Copyright FCI.



PRODUCT NUMBER	SIZE	STYLE	LATCH	DIM A	DIM B	DIM C	DIM D	DIM E	PIN PLATING
68710-145	2 X 17	D	NONE	2.46/62.48	1.600/40.64	1.920/48.79	2.300/58.42	.160/4.06	1
-146								.160/4.06	2
-147								.610/15.49	1
-148								.610/15.49	2
-149								.733/18.62	1
-150			NONE					.733/18.62	2
-151			STD.					.160/4.06	1
-152								.160/4.06	2
-153								.610/15.49	1
-154								.610/15.49	2
-155								.733/18.62	1
-156			STD.					.733/18.62	2
-157			LOW PROFILE					.160/4.06	1
-158								.160/4.06	2
-159								.610/15.49	1
-160								.610/15.49	2
-161								.733/18.62	1
-162	2 X 17	D	LOW PROFILE	2.46/62.48	1.600/40.64	1.920/48.79	2.300/58.42	.733/18.62	2
-163	2 X 20	D	NONE	2.76/70.10	1.900/48.26	2.220/56.39	2.600/66.04	.160/4.06	1
-164								.160/4.06	2
-165								.610/15.49	1
-166								.610/15.49	2
-167								.733/18.62	1
-168			NONE					.733/18.62	2
-169			STD.					.160/4.06	1
-170								.160/4.06	2
-171								.610/15.49	1
-172								.610/15.49	2
-173								.733/18.62	1
-174			STD.					.733/18.62	2
-175			LOW PROFILE					.160/4.06	1
-176								.160/4.06	2
-177								.610/15.49	1
-178								.610/15.49	2
-179								.733/18.62	1
68710-180	2 X 20	D	LOW PROFILE	2.76/70.10	1.900/48.26	2.220/56.39	2.600/66.04	.733/18.62	2

mat'l. code				tolerances unless otherwise specified		CUSTOMER COPY		Electronics www.fciconnect.com	
ltr	ecr no	dr	date	linear	.XX ±.01/.3		projection	title	
H					.XXX ±.005/0.13			P.F. HEADER ASS'Y	
					.XXXX ±.0020/0.051			SEA HORSE - 4 WALL	
				angles	0° ±2'		INCH/MM scale 1:1	product family QUICKIE code -	
				dr	M. CLOUSER	3/1/90		size dwg no	
				enr	M. SMYK	3/1/99		A 68710	
				chr	M. SMYK	3/1/99		sheet 7 of	
				appd	M. SMYK	3/1/99			
sheet index	revision sheet								

cage code 22526

ACAD

Tous droits strictement réservés. Reproduction ou communication à des tiers  
Interdite sous quelque forme que ce soit sans autorisation écrite du propriétaire.  
Propriété de c FCI. Droits de reproduction FCI.

All rights strictly reserved. Reproduction or issue to third parties in any  
form whatever is not permitted without written authority from the proprietor.  
Property of FCI. Copyright FCI.



PRODUCT NUMBER	SIZE	STYLE	LATCH	DIM A	DIM B	DIM C	DIM D	DIM E	PIN PLATING
68710-181	2 X 22	D	NONE	2.96/75.18	2.100/53.34	2.420/61.47	2.800/71.12	.160/4.06	1
-182								.160/4.06	2
-183								.610/15.49	1
-184								.610/15.49	2
-185								.733/18.62	1
-186			NONE					.733/18.62	2
-187			STD.					.160/4.06	1
-188								.160/4.06	2
-189								.610/15.49	1
-190								.610/15.49	2
-191								.733/18.62	1
-192			STD.					.733/18.62	2
-193			LOW PROFILE					.160/4.06	1
-194								.160/4.06	2
-195								.610/15.49	1
-196								.610/15.49	2
-197								.733/18.62	1
-198	2 X 22	D	LOW PROFILE	2.96/75.18	2.100/53.34	2.420/61.47	2.800/71.12	.733/18.62	2
-199	2 X 25	D	NONE	3.26/82.80	2.400/60.96	2.720/69.09	3.100/78.74	.160/4.06	1
-200								.160/4.06	2
-201								.610/15.49	1
-202								.610/15.49	2
-203								.733/18.62	1
-204			NONE					.733/18.62	2
-205			STD.					.160/4.06	1
-206								.160/4.06	2
-207								.610/15.49	1
-208								.610/15.49	2
-209								.733/18.62	1
-210			STD.					.733/18.62	2
-211			LOW PROFILE					.160/4.06	1
-212								.160/4.06	2
-213								.610/15.49	1
-214								.610/15.49	2
-215								.733/18.62	1
68710-216	2 X 25	D	LOW PROFILE	3.26/82.80	2.400/60.96	2.720/69.09	3.100/78.74	.733/18.62	2

mat'l. code				tolerances unless otherwise specified			CUSTOMER COPY		Electronics www.fciconnect.com	
ltr	ecn no	dr	date	linear	.XX ±.01/.3		projection	title		
H					.XXX ±.005/0.13			P.F. HEADER ASS'Y		
				angles	.XXX ±.0020/0.051			SEA HORSE - 4 WALL		
					0' ±2'			INCH/MM		product family QUICKIE
				dr	M. CLOUSER	3/1/90	scale	size		sheet
				engr	M. SMYK	3/1/99		dwg no		8 of
				chr	M. SMYK	3/1/99		A		
				appd	M. SMYK	3/1/99		68710		
sheet index	revision sheet						1:1	cage code		
								22526		

ACAD

cage code  
22526



PRODUCT NUMBER	SIZE	STYLE	LATCH	DIM A	DIM B	DIM C	DIM D	DIM E	PIN PLATING
68710-217	2 X 30	D	NONE	3.76/95.50	2.900/73.66	3.220/81.79	3.600/91.44	.160/4.06	1
-218								.160/4.06	2
-219								.610/15.49	1
-220								.610/15.49	2
-221								.733/18.62	1
-222			NONE					.733/18.62	2
-223			STD.					.160/4.06	1
-224								.160/4.06	2
-225								.610/15.49	1
-226								.610/15.49	2
-227								.733/18.62	1
-228			STD.					.733/18.62	2
-229			LOW PROFILE					.160/4.06	1
-230								.160/4.06	2
-231								.610/15.49	1
-232								.610/15.49	2
-233								.733/18.62	1
-234	2 X 30	D	LOW PROFILE	3.76/95.50	2.900/73.66	3.220/81.79	3.600/91.44	.733/18.62	2
-235	2 X 5	A	STD.	1.26/32.00	.400/10.16	.720/18.28	1.100/27.94	.250/6.35	2
-236	2 X 8	D		1.56/39.62	.700/17.78	1.020/25.91	1.400/35.56		
-237	2 X 10			1.76/44.70	.900/22.86	1.220/30.99	1.600/40.64		
-238	2 X 13			2.06/52.34	1.200/30.48	1.520/38.61	1.900/48.26		
-239	2 X 17			2.46/62.48	1.600/40.64	1.920/48.79	2.300/58.42		
-240	2 X 20			2.76/70.10	1.900/48.26	2.220/56.39	2.600/66.04		
-241	2 X 25			3.26/82.80	2.400/60.96	2.720/69.09	3.100/78.74		
-242	2 X 30	D	STD.	3.76/95.50	2.900/73.66	3.220/81.79	3.600/91.44		
-243	2 X 15	D	STD.	2.26/57.40	1.400/35.56	1.720/43.69	2.100/53.34		
-244	2 X 5	A	NONE	1.26/32.00	.400/10.16	.720/18.28	1.100/27.94		
-245	2 X 8	D		1.56/39.62	.700/17.78	1.020/25.91	1.400/35.56		
-246	2 X 10			1.76/44.70	.900/22.86	1.220/30.99	1.600/40.64		
-247	2 X 13			2.06/52.34	1.200/30.48	1.520/38.61	1.900/48.26		
-248	2 X 17			2.46/62.48	1.600/40.64	1.920/48.79	2.300/58.42		
-249	2 X 20			2.76/70.10	1.900/48.26	2.220/56.39	2.600/66.04		
-250	2 X 25			3.26/82.80	2.400/60.96	2.720/69.09	3.100/78.74		
68710-251	2 X 30			3.76/95.50	2.900/73.66	3.220/81.79	3.600/91.44	.250/6.35	2

NOTE 10  
NOTE 10  
NOTE 10  
NOTE 10  
NOTE 10  
NOTE 10  
NOTE 10  
NOTE 10  
NOTE 10  
NOTE 10

Tous droits strictement réservés. Reproduction ou communication à des tiers interdite sous quelque forme que ce soit sans autorisation écrite du propriétaire. Propriété de © FCI. Droits de reproduction FCI.

All rights strictly reserved. Reproduction or issue to third parties in any form whatever is not permitted without written authority from the proprietor. Property of FCI. Copyright FCI.



mat'l. code				tolerances unless otherwise specified			CUSTOMER COPY	Electronics www.fciconnect.com	
ltr	ecn no	dr	date	linear	.XX ±.01/.3		projection	title	
S					.XXX ±.005/0.13			P.F. HEADER ASS'Y	
					.XXXX ±.0020/0.051			SEA HORSE - 4 WALL	
				angles	0° ±2'		INCH/MM scale 1:1	product family QUICKIE code -	
				dr	M. CLOUSER	3/1/90		size	
				enr	M. SMYK	3/1/99	dwg no		
				chr	M. SMYK	3/1/99	A 68710		
				appd	M. SMYK	3/1/99	sheet 9 of		
sheet index	revision sheet								

cage code 22526

Tous droits strictement reserves. Reproduction ou communication a des tiers interdite sous quelque forme que ce soit sans autorisation ecrite du proprietaire. Propriete de c FCI. Droits de reproduction FCI.

All rights strictly reserved. Reproduction or issue to third parties in any form whatever is not permitted without written authority from the proprietor. Property of FCI. Copyright FCI.



PRODUCT NUMBER	SIZE	STYLE	LATCH	DIM A	DIM B	DIM C	DIM D	DIM E	PIN PLATING	POLARIZED MISSING PIN
68710-252	2 x 15	D	NONE	2.26/57.40	1.400/35.56	1.720/43.69	2.100/53.34	.250/6.35	2	
68710-253	2 x 20	D	STD.	2.76/70.10	1.900/48.26	2.220/56.39	2.600/66.04	.160/4.06	2	PIN #20
68710-309	2 x 5	B	STD.	1.26/32.00	.400/10.16	.720/18.28	1.100/27.94	.160/4.06	1	PIN #1
68710-310	2 x 17	D	STD.	2.46/62.48	1.600/40.64	1.920/48.79	2.300/58.42	.160/4.06	1	PIN #25

mat'l. code				tolerances unless otherwise specified			CUSTOMER COPY		Electronics www.fciconnect.com	
ltr	ecn no	dr	date	linear	.XX ±.01/3		projection	title		
Y					.XXX ±.005/0.13			P.F. HEADER ASS'Y		
					.XXX ±.0020/0.051			SEA HORSE - 4 WALL		
				angles	0° ±2'		 INCH/MM	product family QUICKIE		code
				dr	M. CLOUSER	3/1/90		size	A	
				enr	M. SMYK	3/1/90	scale		68710	
				chr	M. SMYK	3/1/90		1:1		
				appd	M. SMYK	3/1/90				
sheet index	revision sheet									

cage code  
22526

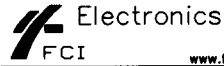
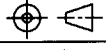
ACAD

PRODUCT NUMBER	SIZE	STYLE	LATCH	DIM A	DIM B	DIM C	DIM D	DIM E	PIN PLATING	NOTES	PIN REMOVED
68710-400	2 x 5	A	NONE	1.26/32.00	.400/10.16	.720/18.28	1.100/27.94	.250/6.35	4		
-401	2 x 7	C		1.460/37.08	.600/15.24	.920/23.37	1.300/33.02				
-402	2 x 8	D		1.56/39.62	.700/17.78	1.020/25.91	1.400/35.56				
-403	2 x 10			1.76/44.70	.900/22.86	1.220/30.99	1.600/40.64				
-404	2 x 12			1.960/49.78	1.100/27.94	1.420/36.07	1.800/45.72				
-405	2 x 13			2.06/52.34	1.200/30.48	1.520/38.61	1.900/48.26				
-406	2 x 15			2.26/57.40	1.400/35.56	1.720/43.69	2.100/53.34				
-407	2 x 17			2.46/62.48	1.600/40.64	1.920/48.79	2.300/58.42				
-408	2 x 20			2.76/70.10	1.900/48.26	2.220/56.39	2.600/66.04				
-409	2 x 22			2.960/75.18	2.100/53.34	2.420/61.47	2.800/71.12				
-410	2 x 25			3.26/82.80	2.400/60.96	2.720/69.09	3.100/78.74				
-411	2 x 30	D	NONE	3.76/95.50	2.900/73.66	3.220/81.79	3.600/91.44				
-420	2 x 5	A	STD.	1.26/32.00	.400/10.16	.720/18.28	1.100/27.94			NOTE 10	
-421	2 x 7	C		1.460/37.08	.600/15.24	.920/23.37	1.300/33.02			NOTE 10	
-422	2 x 8	D		1.56/39.62	.700/17.78	1.020/25.91	1.400/35.56			NOTE 10	
-423	2 x 10			1.76/44.70	.900/22.86	1.220/30.99	1.600/40.64			NOTE 10	
-424	2 x 12			1.960/49.78	1.100/27.94	1.420/36.07	1.800/45.72			NOTE 10	
-425	2 x 13			2.06/52.34	1.200/30.48	1.520/38.61	1.900/48.26			NOTE 10	
-426	2 x 15			2.26/57.40	1.400/35.56	1.720/43.69	2.100/53.34			NOTE 10	
-427	2 x 17			2.46/62.48	1.600/40.64	1.920/48.79	2.300/58.42			NOTE 10	
-428	2 x 20			2.76/70.10	1.900/48.26	2.220/56.39	2.600/66.04			NOTE 10	
-429	2 x 22			2.960/75.18	2.100/53.34	2.420/61.47	2.800/71.12			NOTE 10	
-430	2 x 25			3.26/82.80	2.400/60.96	2.720/69.09	3.100/78.74			NOTE 10	
-431	2 x 30	D	STD.	3.76/95.50	2.900/73.66	3.220/81.79	3.600/91.44			NOTE 10	
-440	2 x 5	A	LOW PROFILE	1.26/32.00	.400/10.16	.720/18.28	1.100/27.94				
-441	2 x 7	C		1.460/37.08	.600/15.24	.920/23.37	1.300/33.02				
-442	2 x 8	D		1.56/39.62	.700/17.78	1.020/25.91	1.400/35.56				
-443	2 x 10			1.76/44.70	.900/22.86	1.220/30.99	1.600/40.64				
-444	2 x 12			1.960/49.78	1.100/27.94	1.420/36.07	1.800/45.72				
-445	2 x 13			2.06/52.34	1.200/30.48	1.520/38.61	1.900/48.26				
-446	2 x 15			2.26/57.40	1.400/35.56	1.720/43.69	2.100/53.34				
-447	2 x 17			2.46/62.48	1.600/40.64	1.920/48.79	2.300/58.42				
-448	2 x 20			2.76/70.10	1.900/48.26	2.220/56.39	2.600/66.04				
-449	2 x 22			2.960/75.18	2.100/53.34	2.420/61.47	2.800/71.12				
-450	2 x 25			3.26/82.80	2.400/60.96	2.720/69.09	3.100/78.74				
-451	2 x 30	D	LOW PROFILE	3.76/95.50	2.900/73.66	3.220/81.79	3.600/91.44	.250/6.35			
68710-452	2 x 7	C	STD.	1.460/37.08	.600/15.24	.920/23.37	1.300/33.02	.160/4.06	4	NOTE 10	14

Tous droits strictement réservés. Reproduction ou communication à des tiers interdite sous quelque forme que ce soit sans autorisation écrite du propriétaire. Propriété de c. FCI. Droits de reproduction FCI

All rights strictly reserved. Reproduction or issue to third parties in any form whatever is not permitted without written authority from the proprietor. Property of FCI. Copyright FCI

FCI


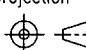
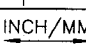
mat'l. code		tolerances unless otherwise specified		CUSTOMER COPY		 <b>Electronics</b> www.fciconnect.com		
ltr	ecn no	dr	date	linear	.XX ±.01/.3	projection		
u			.XXX ±.005/0.13					
			.XXXX ±.0020/0.051					
				angles	0° ±2'	INCH/MM scale 1:1	title <b>P.F. HEADER ASS'Y                  SEA HORSE - 4 WALL</b>	
				dr	M. CLOUSER 3/1/90			product family QUICKIE size dwg no <b>A 68710</b>
				enfr	M. SMYK 3/1/90			
				chr	M. SMYK 3/1/90			
				appd	M. SMYK 3/1/90		code -	
sheet index	revisions	sheet					sheet 11 of	

PRODUCT NUMBER	SIZE	STYLE	LATCH	DIM A	DIM B	DIM C	DIM D	DIM E	PIN PLATING	POSITION OMITTED
68710-500	2 x 5	A	NONE	1.260/32.00	.400/10.16	.720/18.28	1.100/27.94	.160/4.06	5	
-501	2 x 7	C		1.460/37.08	.600/15.24	.920/23.37	1.300/33.02			
-502	2 x 8	D		1.560/39.62	.700/17.78	1.020/25.91	1.400/35.56			
-503	2 x 10			1.760/44.70	.900/22.86	1.220/30.99	1.600/40.64			
-504	2 x 12			1.960/49.78	1.100/27.49	1.420/36.07	1.800/45.72			
-505	2 x 13			2.060/52.34	1.200/30.48	1.520/38.61	1.900/48.26			
-506	2 x 15			2.260/57.40	1.400/35.56	1.720/43.69	2.100/53.34			
-507	2 x 17			2.460/62.48	1.600/40.64	1.920/48.79	2.300/58.42			
-508	2 x 20			2.760/70.10	1.900/48.26	2.220/56.39	2.600/66.04			
-509	2 x 22			2.960/75.18	2.100/53.34	2.420/61.47	2.800/71.12			
-510	2 x 25			3.260/82.80	2.400/60.96	2.720/69.09	3.100/78.74			
-511	2 x 30	D	NONE	3.760/95.50	2.900/73.66	3.220/81.79	3.600/91.44			
-520	2 x 5	A	STD.	1.260/32.00	.400/10.16	.720/18.28	1.100/27.94			NOTE 10
-521	2 x 7	C		1.460/37.08	.600/15.24	.920/23.37	1.300/33.02			NOTE 10
-522	2 x 8	D		1.560/39.62	.700/17.78	1.020/25.91	1.400/35.56			NOTE 10
-523	2 x 10			1.760/44.70	.900/22.86	1.220/30.99	1.600/40.64			NOTE 10
-524	2 x 12			1.960/49.78	1.100/27.49	1.420/36.07	1.800/45.72			NOTE 10
-525	2 x 13			2.060/52.34	1.200/30.48	1.520/38.61	1.900/48.26			NOTE 10
-526	2 x 15			2.260/57.40	1.400/35.56	1.720/43.69	2.100/53.34			NOTE 10
-527	2 x 17			2.460/62.48	1.600/40.64	1.920/48.79	2.300/58.42			NOTE 10
-528	2 x 20			2.760/70.10	1.900/48.26	2.220/56.39	2.600/66.04			NOTE 10
-529	2 x 22			2.960/75.18	2.100/53.34	2.420/61.47	2.800/71.12			NOTE 10
-530	2 x 25			3.260/82.80	2.400/60.96	2.720/69.09	3.100/78.74			NOTE 10
-531	2 x 30	D	STD.	3.760/95.50	2.900/73.66	3.220/81.79	3.600/91.44			NOTE 10
-540	2 x 5	A	LOW PROFILE	1.260/32.00	.400/10.16	.720/18.28	1.100/27.94			
-541	2 x 7	C		1.460/37.08	.600/15.24	.920/23.37	1.300/33.02			
-542	2 x 8	D		1.560/39.62	.700/17.78	1.020/25.91	1.400/35.56			
-543	2 x 10			1.760/44.70	.900/22.86	1.220/30.99	1.600/40.64			
-544	2 x 12			1.960/49.78	1.100/27.49	1.420/36.07	1.800/45.72			
-545	2 x 13			2.060/52.34	1.200/30.48	1.520/38.61	1.900/48.26			
-546	2 x 15			2.260/57.40	1.400/35.56	1.720/43.69	2.100/53.34			
-547	2 x 17			2.460/62.48	1.600/40.64	1.920/48.79	2.300/58.42			
-548	2 x 20			2.760/70.10	1.900/48.26	2.220/56.39	2.600/66.04			
-549	2 x 22			2.960/75.18	2.100/53.34	2.420/61.47	2.800/71.12			
-550	2 x 25			3.260/82.80	2.400/60.96	2.720/69.09	3.100/78.74			
-551	2 x 30		LOW PROFILE	3.760/95.50	2.900/73.66	3.220/81.79	3.600/91.44			
-552	2 x 8		NONE	1.560/39.62	.700/17.78	1.020/25.91	1.400/35.56			2
-553	2 x 8		STD	1.560/39.62	.700/17.78	1.020/25.91	1.400/35.56			2
-554	2 x 10		NONE	1.760/44.70	.900/22.86	1.220/30.99	1.600/40.64			2
-555	2 x 10		STD	1.760/44.70	.900/22.86	1.220/30.99	1.600/40.64		5	2
68710-556	2 x 20	D	STD	2.760/70.10	1.900/48.26	2.220/56.39	2.600/66.04	.160/4.06	1	1,15,16,17,18,19,20,21,22,37,38,39,40

Tous droits strictement reserves. Reproduction ou communication a des tiers interdite sous quelque forme que ce soit sans autorisation écrite du propriétaire. Propriete de c FCI. Droits de reproduction FCI.

All rights strictly reserved. Reproduction or issue to third parties in any form whatever is not permitted without written authority from the proprietor. Property of FCI. Copyright FCI.

NOTE 10  
NOTE 10  
NOTE 10  
NOTE 10  
NOTE 10  
NOTE 10  
NOTE 10  
NOTE 10  
NOTE 10  
NOTE 10  
NOTE 10  
NOTE 10  
NOTE 10  
NOTE 10

mat'l. code				tolerances unless otherwise specified				CUSTOMER COPY		 <b>Electronics</b> www.fciconnect.com	
ltr	ecn no	dr	date	linear	.XX ±.01/.3			projection	 title		
AA					.XXX ±.005/0.13				P.F. HEADER ASS'Y		
				angles	.XXX ±.0020/0.051			 INCH/MM	SEA HORSE - 4 WALL		
					0° ±2'				product family QUICKIE		
				dr	M. CLOUSER	3/1/90	scale	A	68710	code	
				engr	M. SMYK	3/1/90				sheet	
				chr	M. SMYK	3/1/90				12 of	
				appd	M. SMYK	3/1/90					
sheet index	revision sheet										

PRODUCT NUMBER	SIZE	STYLE	LATCH	DIM A	DIM B	DIM C	DIM D	DIM E	PIN PLATING	REMARKS
68710-620	2 x 5	A	STD.	1.260/32.00	.400/10.16	.720/18.28	1.100/27.94	.140/3.56	2	MINI-LIF
-621	2 x 7	C	STD.	1.460/37.08	.600/15.24	.920/23.37	1.300/33.02	.140/3.56	2	MINI-LIF
-640	2 x 20	D	STD.	2.760/70.10	1.900/48.26	2.220/56.39	2.600/66.04	.140/3.56	2	MINI-LIF
-650	2 x 25	D	STD.	3.260/82.80	2.400/60.96	2.720/69.09	3.100/78.74	.160/4.06	2	MINI-LIF
-651	2 x 22	D	STD.	2.960/75.18	2.100/53.34	2.420/61.47	2.800/71.12		1	
-652	2 x 5	A	STD.	1.260/32.00	.400/10.16	.720/18.29	1.100/27.94			
-710	2 x 5	A	NONE	1.260/32.00	.400/10.16	.720/18.28	1.100/27.94			
-714	2 x 7	C		1.460/37.08	.600/15.24	.920/23.37	1.300/33.02			
-716	2 x 8	D		1.560/39.62	.700/17.78	1.020/25.91	1.400/35.56			
-720	2 x 10			1.760/44.70	.900/22.86	1.220/30.99	1.600/40.64			
-726	2 x 13			2.060/52.32	1.200/30.48	1.520/38.61	1.900/48.26			
-734	2 x 17			2.460/62.48	1.600/40.64	1.920/48.79	2.300/58.42			
-740	2 x 20			2.760/70.10	1.900/48.26	2.220/56.39	2.600/66.04			
-750	2 x 25			3.260/82.80	2.400/60.96	2.720/69.09	3.100/78.74			
-760	2 x 30	D	NONE	3.760/95.50	2.900/73.66	3.220/81.79	3.600/91.44			
-810	2 x 5	A	STD.	1.260/32.00	.400/10.16	.720/18.29	1.100/27.94			
-814	2 x 7	C		1.460/37.08	.600/15.24	.920/23.37	1.300/33.02			
-816	2 x 8	D		1.560/39.62	.700/17.78	1.020/25.91	1.400/35.56			
-820	2 x 10			1.760/44.70	.900/22.86	1.220/30.99	1.600/40.64			
-826	2 x 13			2.060/52.32	1.200/30.48	1.520/38.61	1.900/48.26			
-834	2 x 17			2.460/62.48	1.600/40.64	1.920/48.79	2.300/58.42			
-840	2 x 20			2.760/70.10	1.900/48.26	2.220/56.39	2.600/66.04			
-850	2 x 25			3.260/82.80	2.400/60.96	2.720/69.09	3.100/78.74			
-860	2 x 30	D	STD.	3.760/95.50	2.900/73.66	3.220/81.79	3.600/91.44			
-910	2 x 5	A	LOW	1.260/32.00	.400/10.16	.720/18.29	1.100/27.94			
-914	2 x 7	C		1.460/37.08	.600/15.24	.920/23.37	1.300/33.02			
-916	2 x 8	D		1.560/39.62	.700/17.78	1.020/25.91	1.400/35.56			
-920	2 x 10			1.760/44.70	.900/22.86	1.220/30.99	1.600/40.64			
-926	2 x 13			2.060/52.32	1.200/30.48	1.520/38.61	1.900/48.26			
-934	2 x 17			2.460/62.48	1.600/40.64	1.920/48.79	2.300/58.42			
-940	2 x 20			2.760/70.10	1.900/48.26	2.220/56.39	2.600/66.04			
-950	2 x 25			3.260/82.80	2.400/60.96	2.720/69.09	3.100/78.74			
68710-960	2 x 30	D	LOW	3.760/95.50	2.900/73.66	3.220/81.79	3.600/91.44	.160/4.06	1	

REMOVE PINS:  
2,3,6,7,10,11,14,15,18,19,22,23,26,27,30,31,34,35,38,39,42,43 & 44  
REMOVE PINS: 10

Tous droits strictement réservés. Reproduction ou communication à des tiers interdite sous quelque forme que ce soit sans autorisation écrite du propriétaire. Propriété de c FCI. Droits de reproduction FCI



All rights strictly reserved. Reproduction or issue to third parties in any form whatever is not permitted without written authority from the proprietor. Property of FCI. Copyright FCI

mat'l. code		tolerances unless otherwise specified		CUSTOMER COPY		Electronics www.fciconnect.com		
ltr	ecn no	dr	date	linear	.XX ±.01/3	projection	title	
X					.XXX ±.005/0.13		P.F. HEADER ASS'Y SEA HORSE - 4 WALL	
				angles	XXXX ±.0020/0.051			
				dr	M. CLOUSER 3/1/90	INCH/MM	product family QUICKIE	
				engr	M. SMYK 3/1/90	scale 1:1	size dwg no	
				chr	M. SMYK 3/1/90		A	code -
				appd	M. SMYK 3/1/90			sheet 13 of
sheet index	revision sheet						68710	

cage code 22526