

SMD SHIELDED POWER INDUCTOR



18.54 x 15.24 x 7.62mm

ASPI-1306S

RoHS
Compliant

FEATURES:

- Low radiation shielded architecture
- large pads for good PCB bonding 2.54 x 2.54mm
- Low DCR, suitable for large currents 0.019Ωmax for 5.6uH
- High Energy storage

APPLICATIONS:

- Portable communication equipment
- OA equipment
- LCD, DVD, modem, set-top box
- DC/ DC converter

ELECTRICAL SPECIFICATIONS:

Abracon P/N:	ASPI-1306S-XXX
Operating Temperature:	-40°C to +85°
Storage Temperature:	-40°C to +85°C 70% RH max.
Measuring Conditions:	Unless specified, test condition should be Temp.=15~35 °C, Humidity=25~75%. If needed, then test condition should be Temp.=18 ~22 °C, Humidity=60~70%.

Part Number	Inductance (μH)	DCR (Ω) Max	Rated DC current (A)
			Idc ¹ , Max
ASPI-1306S-100M	10	0.04	8
ASPI-1306S-150M	15	0.048	7
ASPI-1306S-220M	22	0.059	6
ASPI-1306S-330M	33	0.075	5
ASPI-1306S-470M	47	0.097	4
ASPI-1306S-680M	68	0.138	3
ASPI-1306S-101M	100	0.207	2.4
ASPI-1306S-151M	150	0.293	2.1
ASPI-1306S-221M	220	0.47	1.9
ASPI-1306S-331M	330	0.78	1.1
ASPI-1306S-471M	470	1.08	1.1
ASPI-1306S-681M	680	1.4	0.96
ASPI-1306S-102M	1000	2.01	0.8

Tolerance: M=20%

Note

1. IDC 1 : Base on Inductance change ($|\Delta L/L0| \leq 10\%$), $\Delta L=L(\text{IDC})-L0$

2. Test Freq.: 100kHz、0.1V

OPTIONS AND PART IDENTIFICATION

ASPI-1306S - - -

Inductance Code

Please refer to the table above

Tolerance %

M: ±20%

Packaging

T: Tape and Reel

SMD SHIELDED POWER INDUCTOR

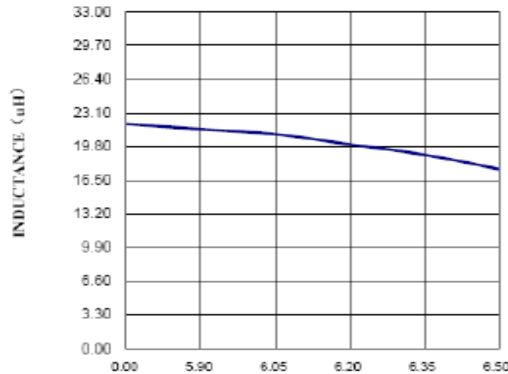


18.54 x 15.24 x 7.62mm

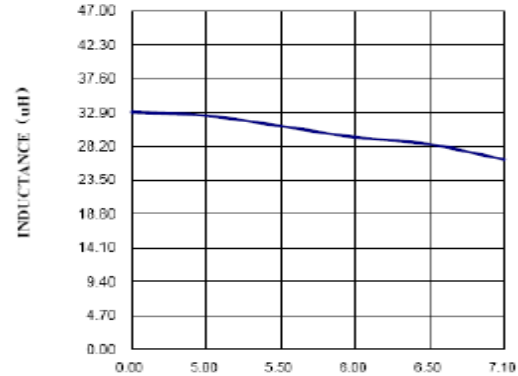
ASPI-1306S

RoHS
Compliant

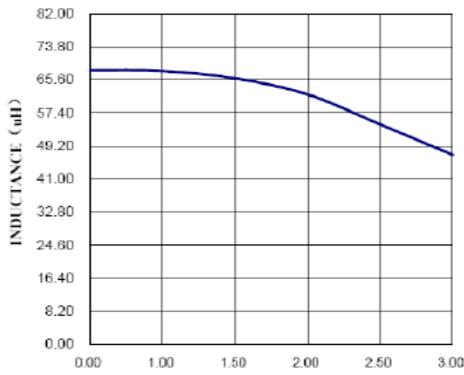
ELECTRICAL SPECIFICATION CHART



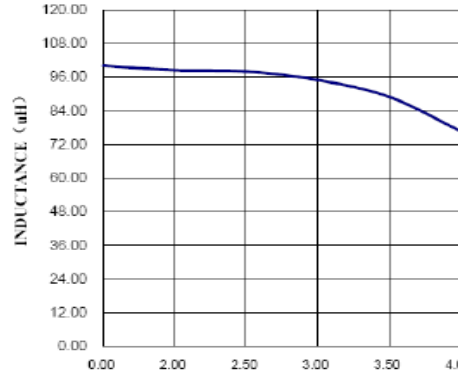
CURRENT (A) 220M
ASPI-1306S-220M



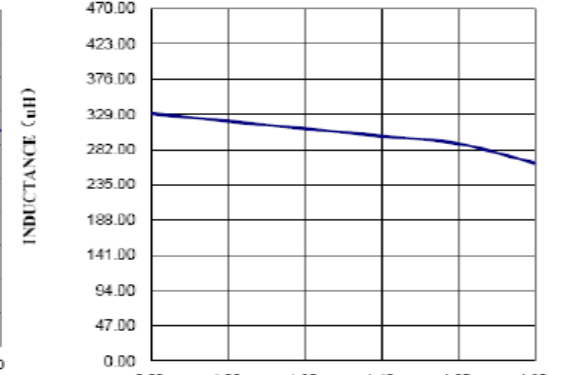
CURRENT (A) 330M
ASPI-1306S-330M



CURRENT (A) 680M
ASPI-1306S-680M

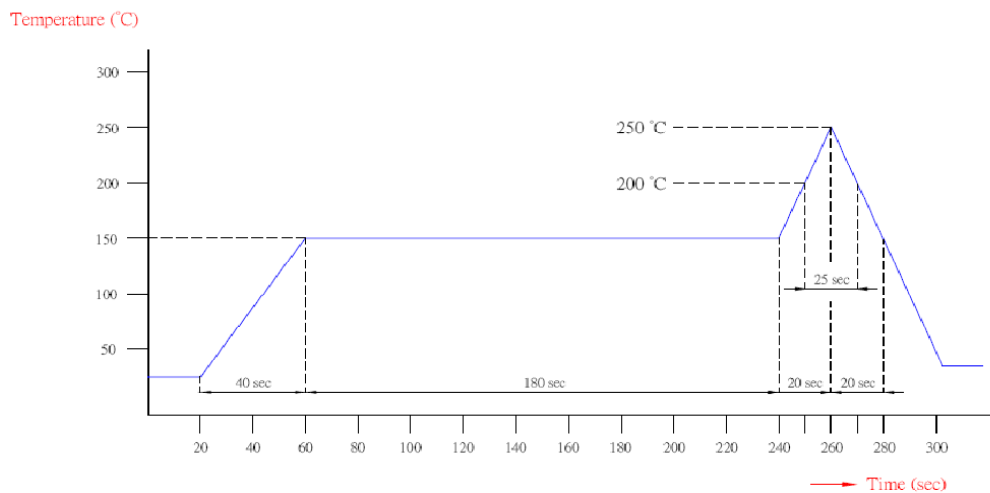


CURRENT (A) 101M
ASPI-1306S-101M



CURRENT (A) 331M
ASPI-1306S-331M

REFLOW PROFILE:



The reflow condition recommended above is according to the machine used by our company. Big differences will arise as a result of the type of machine, reflow conditions, method, etc used. Hence, before setting up your Reflow Conditions, please contact Abracon Corporation to clear all questions.

ABRACON IS
ISO9001:2008
CERTIFIED



ABRACON
CORPORATION

Visit www.abracon.com for Terms & Conditions of Sale **Revised: 08.11.10**
30332 Esperanza, Rancho Santa Margarita, California 92688
tel 949-546-8000 | fax 949-546-8001 | www.abracon.com

SMD SHIELDED POWER INDUCTOR

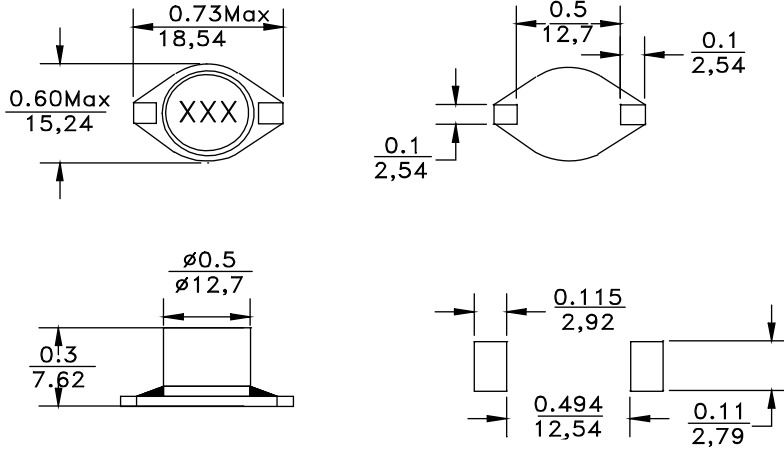


18.54 x 15.24 x 7.62mm

ASPI-1306S

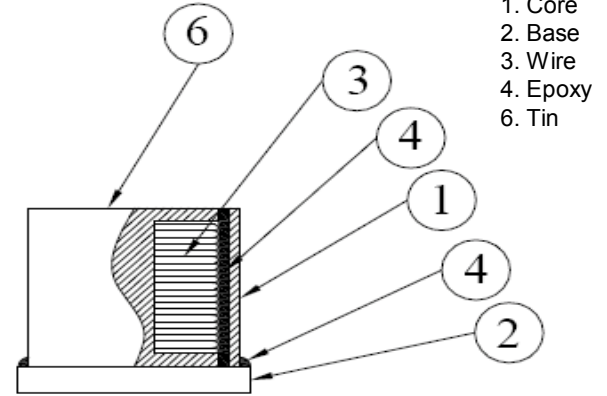
RoHS
Compliant

OUTLINE DIMENSIONS:



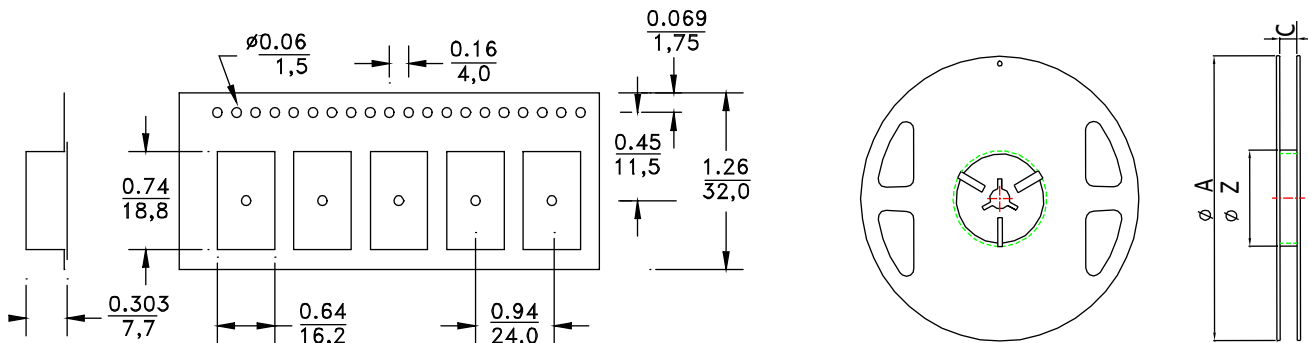
Dimension : inch/mm (tolerance: +/-0.3 in mm)

MATERIALS:



Plating material: Ni-Sn

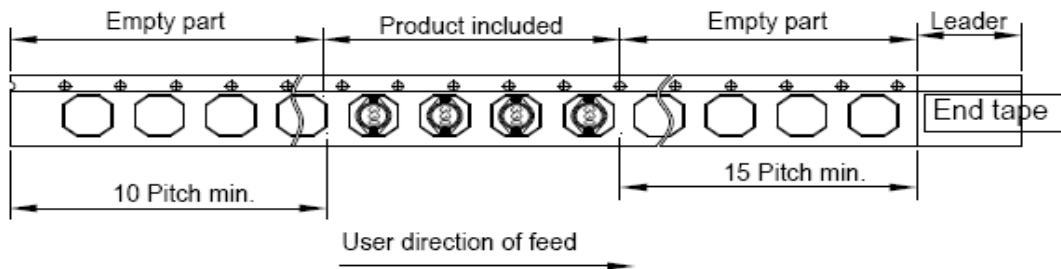
TAPE & REEL: T= tape and reel (250pcs/reel)



Dimension : mm

Dimension: inch/mm
Tolerance: +/-0.1 in mm

series	A	C	Z
ASPI-1306S	330±2.0	32.5	100±1.0



ATTENTION: Abracon Corporation's products are COTS – Commercial-Off-The-Shelf products; suitable for Commercial, Industrial and, where designated, Automotive Applications. Abracon's products are not specifically designed for Military, Aviation, Aerospace, Life-dependant Medical applications or any application requiring high reliability where component failure could result in loss of life and/or property. For applications requiring high reliability and/or presenting an extreme operating environment, written consent and authorization from Abracon Corporation is required. Please contact Abracon Corporation for more information.

ABRACON IS
ISO9001:2008
CERTIFIED



Visit www.abracon.com for Terms & Conditions of Sale **Revised: 08.11.10**
30332 Esperanza, Rancho Santa Margarita, California 92688
tel 949-546-8000 | fax 949-546-8001 | www.abracon.com