

Power Transformers

FLATSTACK™ low profile power transformers—50/60 Hz

For Low Height PC Board Solid-State Power, Control, and Instrumentation Applications

• FOUR SIZES

NEW! 2.5 VA Size 0.650 inches high for 13/16" Card Spacing
 6 VA Size 0.85" high for 1" Card Spacing
 12 VA Size 1.065" high for 1 1/4" Card Spacing
 24 VA Size 1.250" high for 1 9/16" Card Spacing

• SPLIT BOBBIN—Primaries and Secondaries Wound Side by Side.

High isolation for Low Leakage Applications. 1500V Hipot.
 Low Capacity Coupling Minimizes Line Noise and False Triggering

• HUM-BUCKING SEMI-TOROIDAL CONSTRUCTION

• PRECISION SPACED MOLDED-IN TERMINALS

• DUAL PRIMARIES: 115/230V, 50/60 Hz.

PF SERIES—FOR POWER SUPPLIES, INSTRUMENTS, CONTROL EQUIPMENT

Part No.	VA (Size)	Secondary			
		Parallel Connected		Series Connected	
		AC Volts	RMS Amps	AC Volts	RMS Amps
PF2.5-10	2.5	5.0	.50	10.0 CT	.250
PF6-10	6	5.0	1.20	10.0 CT	.60
PF12-10	12	5.0	2.40	10.0 CT	1.20
PF24-10	24	5.0	4.80	10.0 CT	2.40
PF2.5-12	2.5	6.3	.40	12.6 CT	.20
PF6-12	6	6.3	.90	12.6 CT	.45
PF12-12	12	6.3	1.90	12.6 CT	.90
PF24-12	24	6.3	3.80	12.6 CT	1.90
PF2.5-16	2.5	8.0	.30	16.0 CT	.15
PF6-16	6	8.0	.70	16.0 CT	.35
PF12-16	12	8.0	1.50	16.0 CT	.75
PF24-16	24	8.0	3.00	16.0 CT	1.50
PF2.5-20	2.5	10.0	.25	20.0 CT	.125
PF6-20	6	10.0	.60	20.0 CT	.30
PF12-20	12	10.0	1.20	20.0 CT	.60
PF24-20	24	10.0	2.40	20.0 CT	1.20
PF2.5-24	2.5	12.0	.20	24.0 CT	.10
PF6-24	6	12.0	.50	24.0 CT	.25
PF12-24	12	12.0	1.00	24.0 CT	.50
PF24-24	24	12.0	2.00	24.0 CT	1.00
PF2.5-30	2.5	15.0	.17	30.0 CT	.085
PF6-30	6	15.0	.40	30.0 CT	.20
PF12-30	12	15.0	.80	30.0 CT	.40
PF24-30	24	15.0	1.60	30.0 CT	.80
PF2.5-34	2.5	17.0	.15	34.0 CT	.075
PF6-34	6	17.0	.34	34.0 CT	.17
PF12-34	12	17.0	.70	34.0 CT	.35
PF24-34	24	17.0	1.40	34.0 CT	.70
PF2.5-56	2.5	28.0	.09	56.0 CT	.045
PF6-56	6	28.0	.20	56.0 CT	.10
PF12-56	12	28.0	.42	56.0 CT	.21
PF24-56	24	28.0	.85	56.0 CT	.43

PFT SERIES—FOR TRIPLE OUTPUT REGULATED POWER SUPPLIES

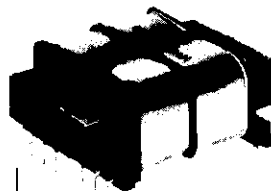
Part No.	VA (Size)	Secondary #1		Secondary #2		DC Output #1		DC Output #2	
		AC Volts	RMS Amps	AC Volts	RMS Amps	CT FW DC Volts	mA DC	CT FW DC Volts	mA DC
		PFT12-35	12	16.0 CT	0.36	35.0 CT	.15	+8.75*	300
PFT12-28	12	16.0 CT	0.36	28.0 CT	.187	+8.75*	300	+17.6	106
PFT24-35	24	16.0 CT	0.72	35.0 CT	.30	+8.75*	600	+22*	170
PFT24-28	24	16.0 CT	0.72	28.0 CT	.375	+8.75*	600	+17.6	212

*8.75, +17.6 or +22 DC output volts are for inputs to +5V and +12 or +15V IC Voltage Regulators. See PFT schematic. Line input 115/230V ±10%.

400 Hz PRINTED CIRCUIT POWER

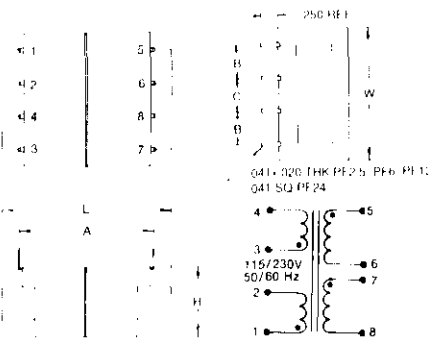
Compact design for miniature solid state circuitry. Precision spaced molded-in terminals for power supplies, control equipment, instrument and similar applications. — Dual secondaries may be connected in series or parallel for varied voltage and current requirements. 115V Primary. See chart to right.

Part No.	Secondary Parallel	Secondary Series
	PC4304	3.15V @ 1A
PC4312	12.6V @ .026A	25.2V CT @ .013A
PC4316	28V @ .012A	56V CT @ .006A
PC4320	35V @ .01A	70V CT @ .005A
PC4408	6.3V @ .60A	12.6V CT @ .30A
PC4412	12.6V @ .30A	25.2V CT @ .15A
PC4416	28V @ .14A	55V CT @ .07A
PC4424	40V @ .10A	80V CT @ .05A
PC4428	58V @ .066A	116V CT @ .033A
PC4432	115V @ 0.10A, 12.6V @ 150A	

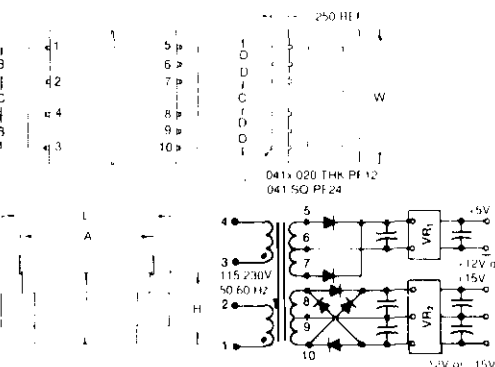


UL 506 File #E79781

PF SERIES



PFT SERIES

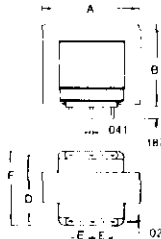


DIMENSIONS (Inches)

VA (Size)	L	W	H	A	B	C	D†	Wt. Oz.
2.5	1.870	1.560	0.650	1.600	0.375	0.375	—	5
6	1.875	1.563	0.850	1.600	0.375	0.375	—	7
12	2.500	2.000	1.065	2.000	0.500	0.500	0.250	11
24	2.870	2.250	1.250	1.900	0.600	0.530	0.300	15



PC4300
PC4400
SERIES



DIMENSIONS (Inches)

Series	A	B	D	E	F	Wt. Oz.
PC4300	.766	.719	0.420	0.187	.688	0.5
PC4400	1.016	.844	0.781	0.200	.953	1.2