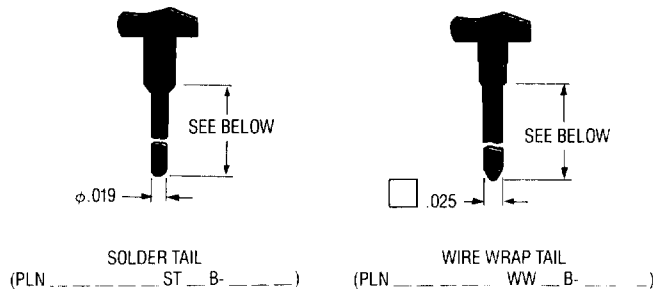
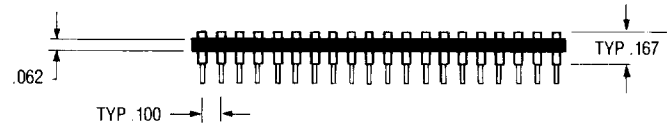


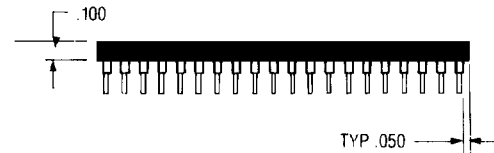
CONTACT TAIL LENGTHS



Epoxy Material (PLN 7B -)



Thermoplastic Material (PLN 8B -)



CHARACTERISTICS

Performance Characteristics

Electrical	
Current Rating	1 Amp
Contact Resistance	10 Milliohms Maximum (Per MIL-STD-1344, Method 3002-1)
Insulation Resistance	2×10^6 Megohms Minimum (Per MIL-STD-1344, Method 3003, Condition B, 50VDC for 1 Minute)
Dielectric With-standing Voltage	600 VRMS (Per MIL-STD-1344, Method 3004A, 60 Hz for 1 Minute)
Capacitance	0.4 Picofarads Maximum (Adjacent Contacts) (Per MIL-STD-202, Method 305, 1KHz to $25 \pm 3^\circ\text{C}$)
Mechanical	
Insertion Force/Contact	3.53 Oz Maximum (0.018 with 10 Microinch Max. Finish Pin)
Withdrawal Force/Contact	0.5 Oz Minimum (0.018 with 10 Microinch Max. Finish Pin)
Lead Acceptance (Round)	.021 Maximum
Lead Acceptance (Square)	.021 Maximum Diagonal
Environmental	
Operating Temperature	-50°C to 125°C
Thermal Shock	No Physical or Electrical Degradation (Per MIL-STD-1344, Method 1003, 5 Cycles)
Humidity	No Physical Damage or Corrosion (Per MIL-STD-202, Method 106, 10 Cycles Conditioning 24 Hrs @ 50°C)
Corrosive Atmosphere	No Physical Damage, Corrosion or Electrical Degradation (Per MIL-S-83734, Ammonia Polysulfide, 10 to 25 PPM, 60% RH, Ambient Temperature, 4 Hrs)
Solderability	No Physical Damage to Contact or Insulator (Per MIL-STD-202, Method 210, Condition B)

Physical Characteristics

Materials	
Contact	(Outer Sleeve): Copper Alloy (Inner Spring): Beryllium-Copper
Body	(7): G-10 Epoxy, Color: Natural (8): Glass Reinforced Thermoplastic Polyester, Color: Black
Finish	
Contact (Inner Spring)	(8): 8 Microinches Minimum Gold over 60 Microinches Minimum Nickel (C): 30 Microinches Minimum Gold over 60 Microinches Minimum Nickel (D): 100 Microinches Minimum Tin/Lead over 60 Microinches Minimum Nickel
Contact (Outer Sleeve)	(1): 100 Microinches Minimum Tin/Lead over 60 Microinches Minimum Nickel (2): 8 Microinches Minimum Gold over 60 Microinches Minimum Nickel

ORDER INFORMATION

Typical Catalog Number Description

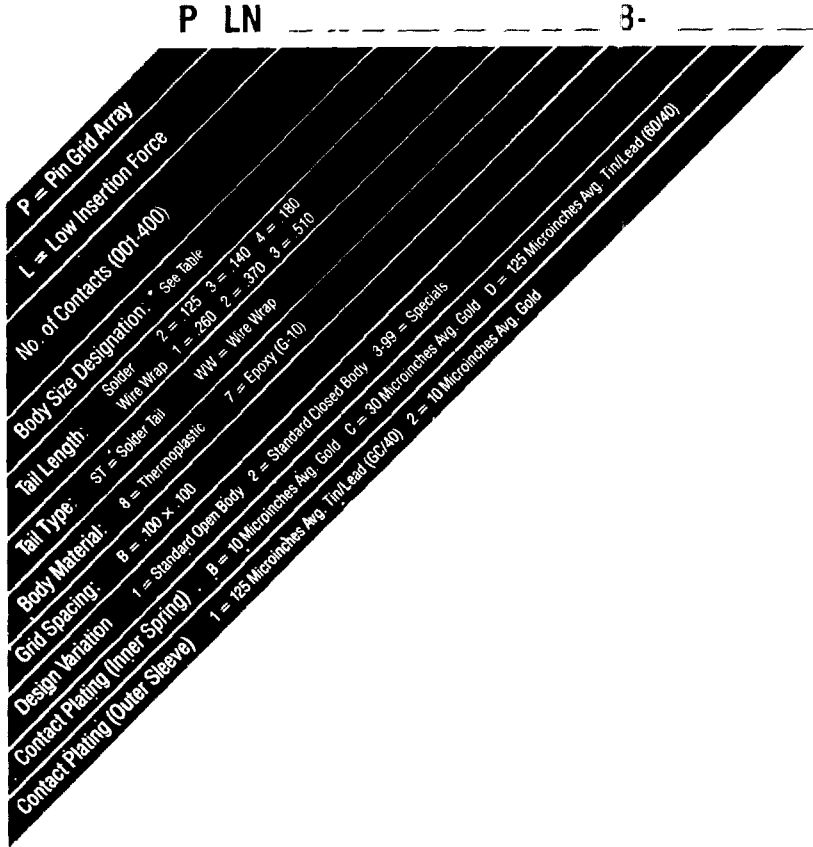


Table of Available Sizes		
Grid Type	Designation	Body Size
5x5	A	500
6x6	B	600
8x8	D	800
9x9	I	900
10x10	F	1,000
11x11	G	1,100
12x12	H	1,200
13x13	J	1,300
14x14	K	1,400
15x15	L	1,500
16x16	M	1,600
17x17	N	1,700
18x18	P	1,800
19x19	R	1,900
20x20	S	2,000

5X5

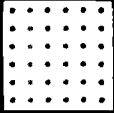
800



PLN012A B-2

6X6

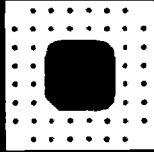
800



PLN036B B-2

8X8

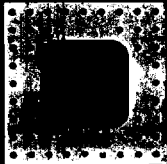
800



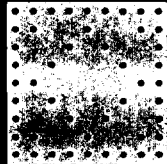
PLN044D B-1

9X9

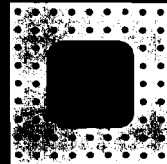
800



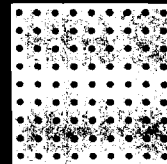
PLN044E B-1



PLN048E B-2



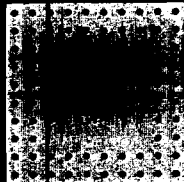
PLN056E B-1



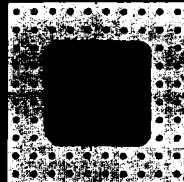
PLN081E B-2

10X10

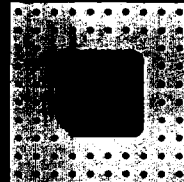
1100



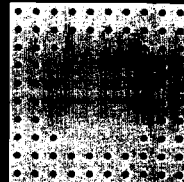
PLN064F B-2



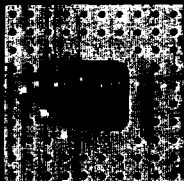
PLN064F B-1



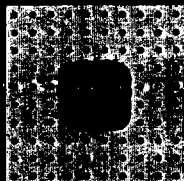
PLN065F B-1



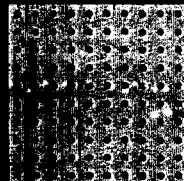
PLN068F B-2



PLN068F B-1

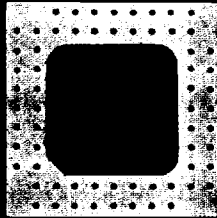


PLN084F B-1

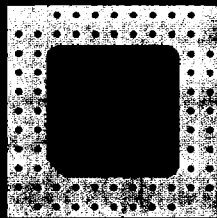


PLN100F B-2

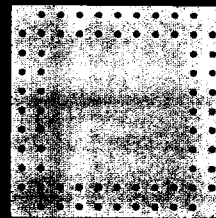
11X11



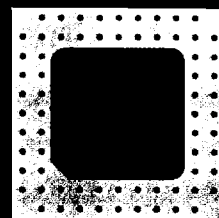
PLN064G B-1



PLN065G B-1

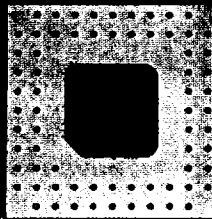


PLN068G B-2

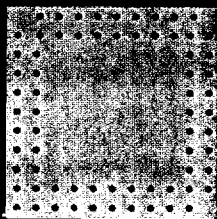


PLN068G B-1

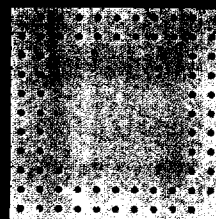
1.100



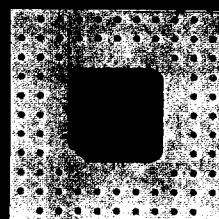
PLN069G B-1



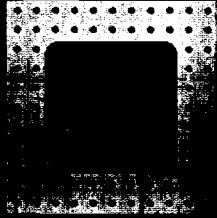
PLN069G B-2



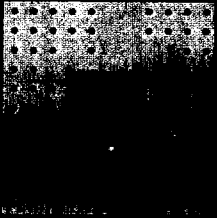
PLN070G B-2



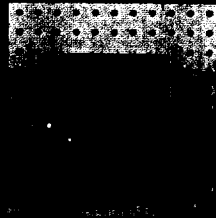
PLN072G B-3



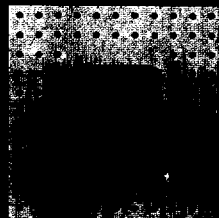
PLN072G B-1



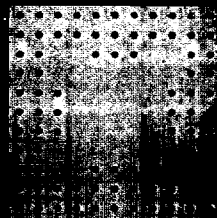
PLN073G B-4



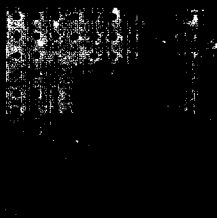
PLN073G B-1



PLN075G B-1



PLN084G B-5



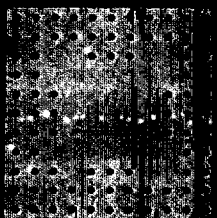
PLN084G B-1



PLN084G B-2



PLN084G B-12



PLN085G B-2



PLN085G B-1



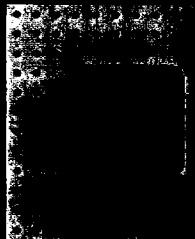
PLN096G B-1



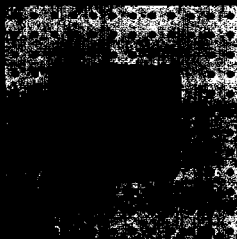
PLN121G B-2

12X12

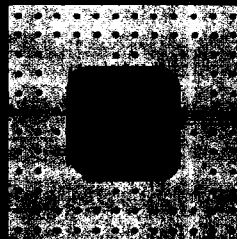
170



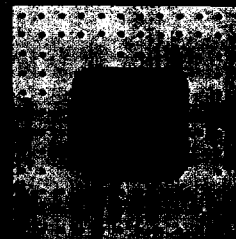
PLN084H B-1



PLN088H B-5



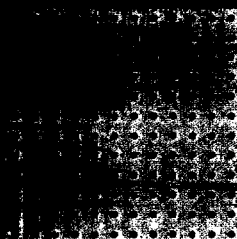
PLN088H B-1



PLN089H B-1



PLN108H B-1



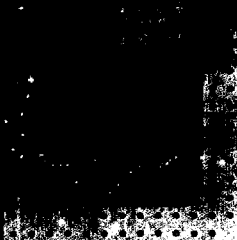
PLN144H B-2

13X13

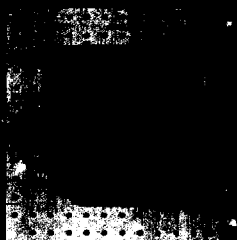
190



PLN073J B-1



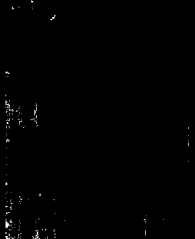
PLN085J B-1



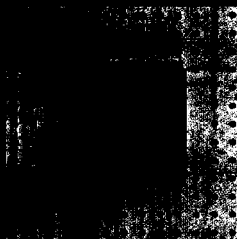
PLN085J B-7



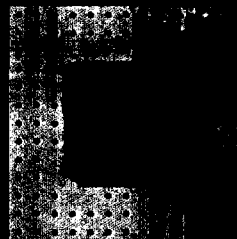
PLN088J B-1



PLN097J B-1



PLN100J B-1

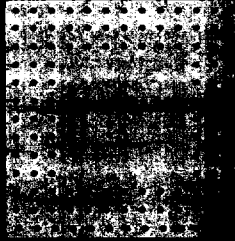


PLN101J B-1



PLN114J B-1

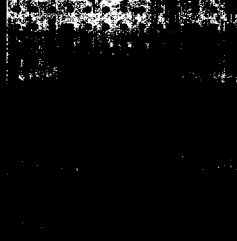
13X13



PLN120J ___ B-2 ___



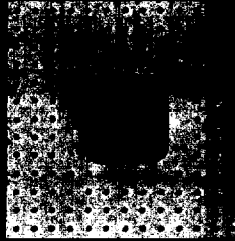
PLN120J ___ B-1 ___



PLN121J ___ B-1 ___



PLN124J ___ B-1 ___



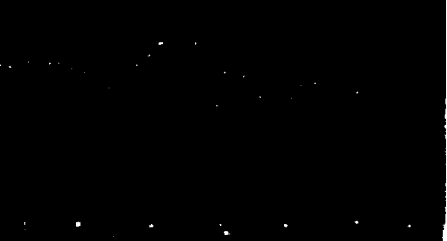
PLN125J ___ B-1 ___



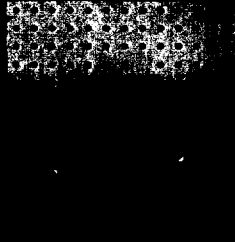
PLN126J ___ B-1 ___



PLN132J ___ B-1 ___



PLN132J ___ B-9 ___



PLN133J ___ B-1 ___



PLN144J ___ B-1 ___



PLN166J ___ B-2 ___

14X14

1.400

PLN132K _____ B-1 _____

PLN133K _____ B-1 _____

PLN135K _____ B-1 _____

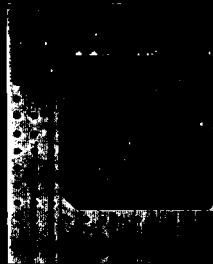
PLN136K _____ B-1 _____

PLN171K _____ B-1 _____

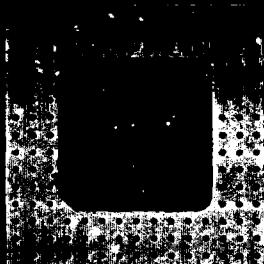
PLN196K _____ B-2 _____

15X15

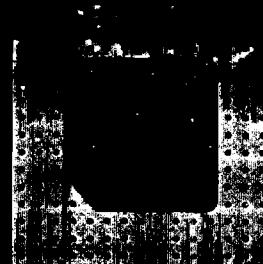
1.500



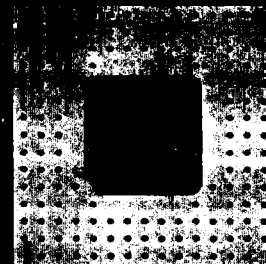
PLN141L _____ B-1 _____



PLN144L _____ B-1 _____

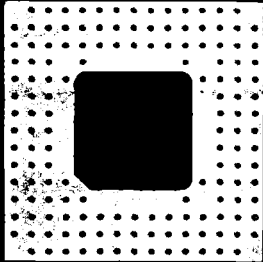


PLN145L _____ B-1 _____

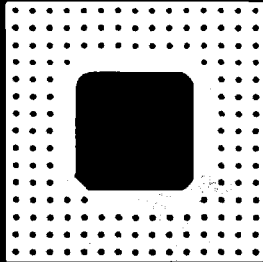


PLN148L _____ B-1 _____

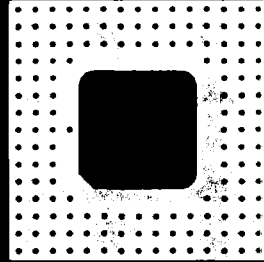
15X15



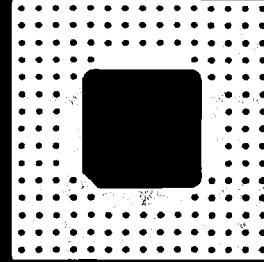
PLN149L B-1



PLN149L B-10

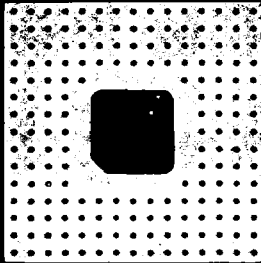


PLN149L B-9

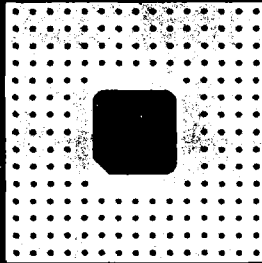


PLN156L B-1

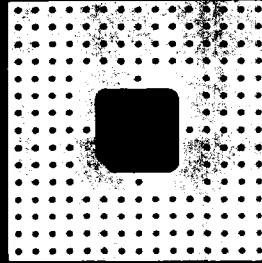
1.50



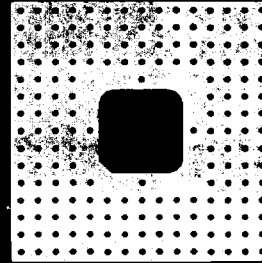
PLN179L B-1



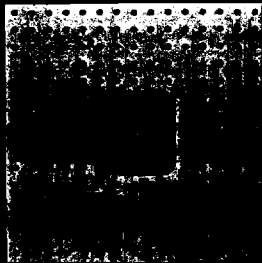
PLN180L B-1



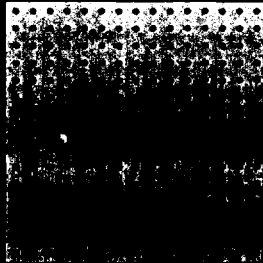
PLN180L B-11



PLN181L B-1

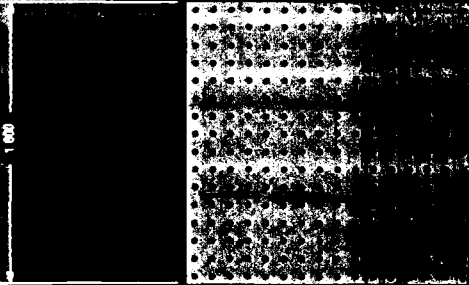


PLN200L B-1



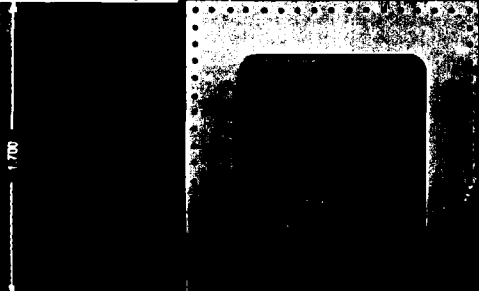
PLN225L B-2

16X16

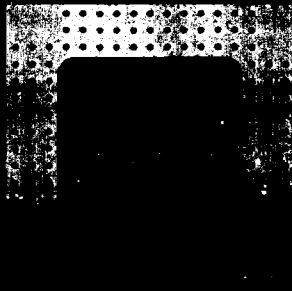


PLN255M B-2

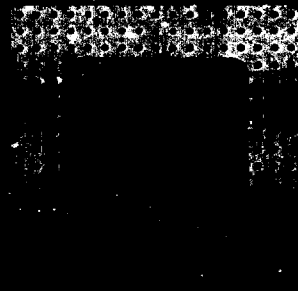
17X17



PLN068N B-1



PLN145N B-1



PLN168N B-1

PLN169N B-1

PLN289N B-2

P

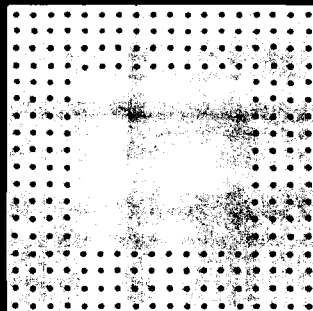
G

A

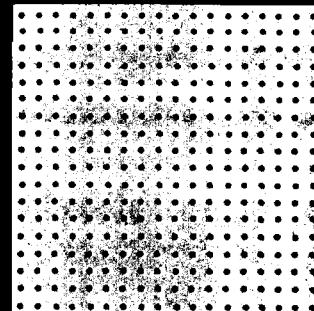
Low
Insertion
Force

LIF

18X18



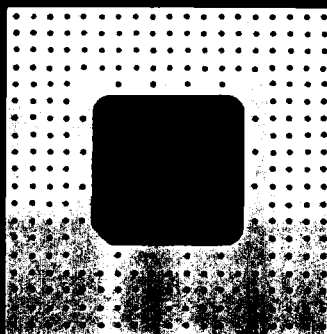
PLN224P B-2



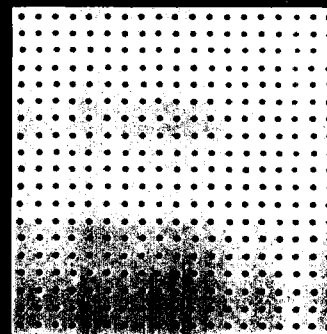
PLN324P B-2

1.000

19X19



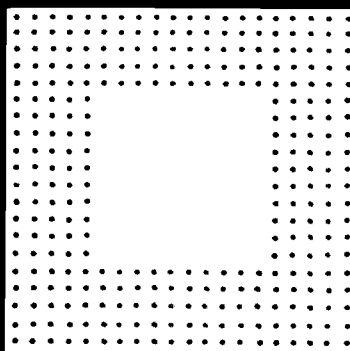
PLN256R B-1



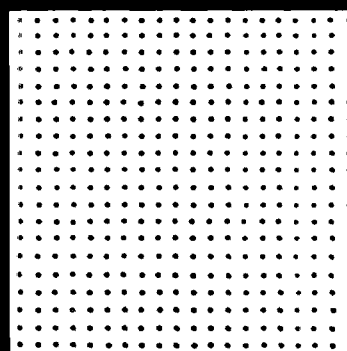
PLN361R B-2

1.000

20X20



PLN300S B-2



PLN400S B-2

2.00