

0.250" Pitch, Series #3

PHYSICAL PROPERTIES

HOUSING MATERIAL: Polypropylene
FLAMMABILITY: UL94V-0
COLOR: Black

TERMINAL

TERMINALS: Bright acid tin over copper alloy
SCREWS: #3-48 steel, zinc plating with clear chromate coating. Wire clamping screws standard.

MECHANICAL

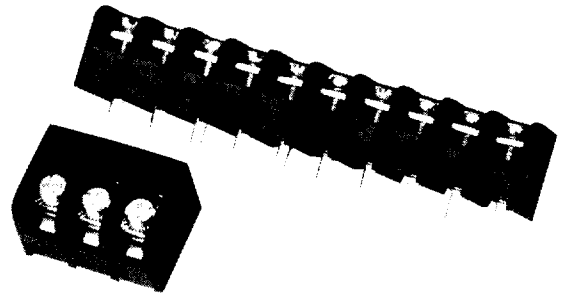
PITCH (TERMINAL SPACING): 0.250"
RECOMMENDED PCB HOLE DIA.: 1.8mm (.073")
RECOMMENDED TIGHTENING TORQUE: 5.5 in.-lbs.

ELECTRICAL PROPERTIES

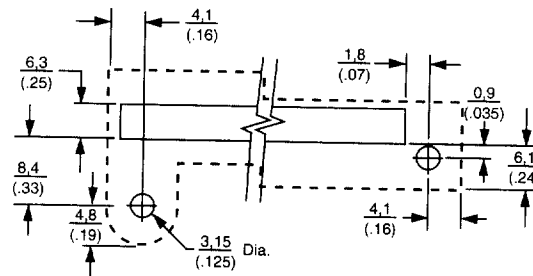
MAXIMUM CURRENT: 10A
OPERATING VOLTAGE: 150V (limited rating)
WIRE RANGE: 18-22 AWG

ENVIRONMENTAL PROPERTIES

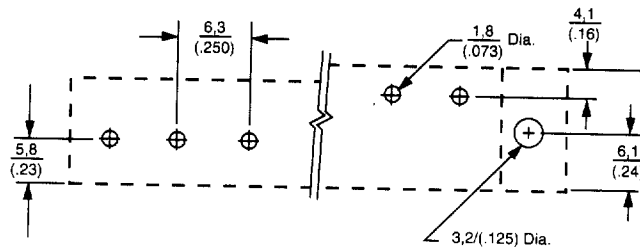
OPERATING TEMPERATURE RANGE: 105°C max.



3PCV-03 & 3PCV-10



RIGHT ANGLE MOUNTING PANEL LAYOUT



RIGHT ANGLE PRINTED CIRCUIT LAYOUT

0.250" Pitch, Series #3

ORDERING INFORMATION

3 PCV - 04 - 004

A **B** **C** **D**

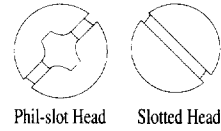
A Screw Size Spacing
3 = #3-48 on .250" Centers

C No. of Circuits (Not Positions)
02 through 32

B Terminal Style
PCV = Printed Circuit Pin, Vertical
PCR = Printed Circuit, Right Angle
STV = Solder Turret, Vertical
STR = Solder Turret, Right Angle
WWV = Solderless Wire Wrap, Vertical

D Modifier
Use table below.

Note: If modifier is -000
it may be omitted. (3PCV-06)



Note: Before ordering, see Cross Reference in Section 15 for equivalent Tyco Electronics Part Number.

Terminal Style	Modifier Slotted Head	Modifier Phil-slot Head	Screw Style	Mounting Construction
PCV	000	006	Wire Clamp	No Mounting
	004	008	Wire Clamp	
PCR	000	006	Wire Clamp	No Mounting
	004	008	Wire Clamp	
STV WWV	000	006	Wire Clamp	
	004	008	Wire Clamp	No Mounting
STR	000	006	Wire Clamp	
	004	008	Wire Clamp	

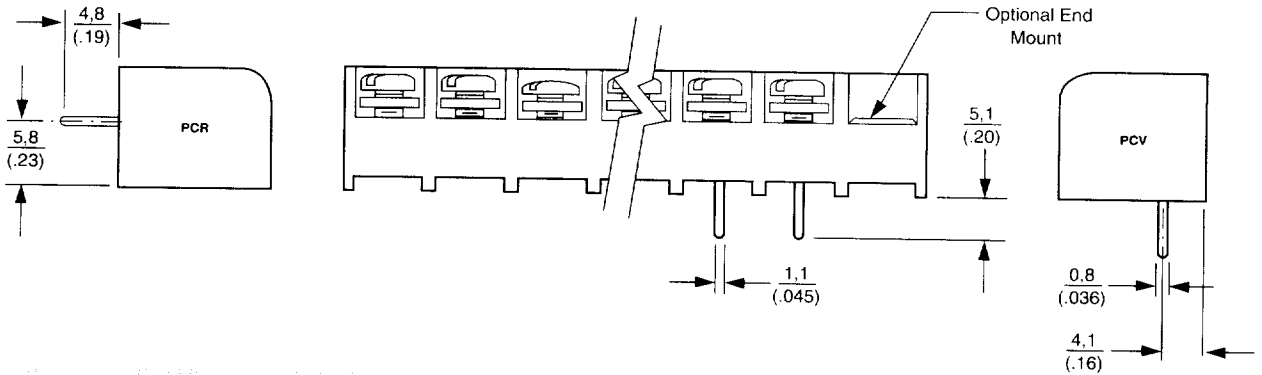
For complete product information, order Catalog 1308389



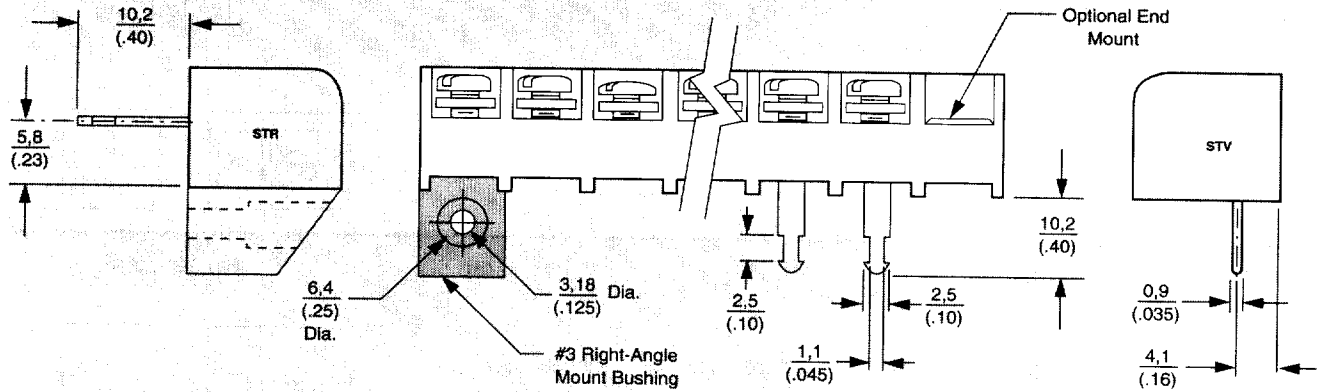
8
Terminal Blocks

0.250" Pitch, Series #3

Printed Circuit Pin

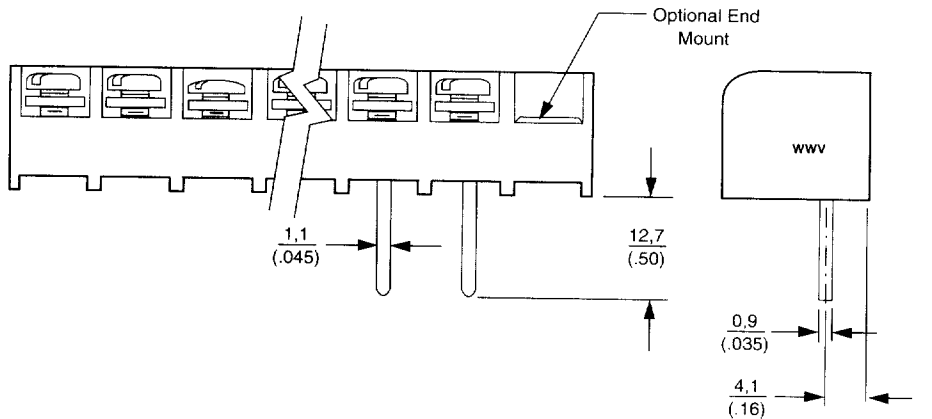


Solder Turret

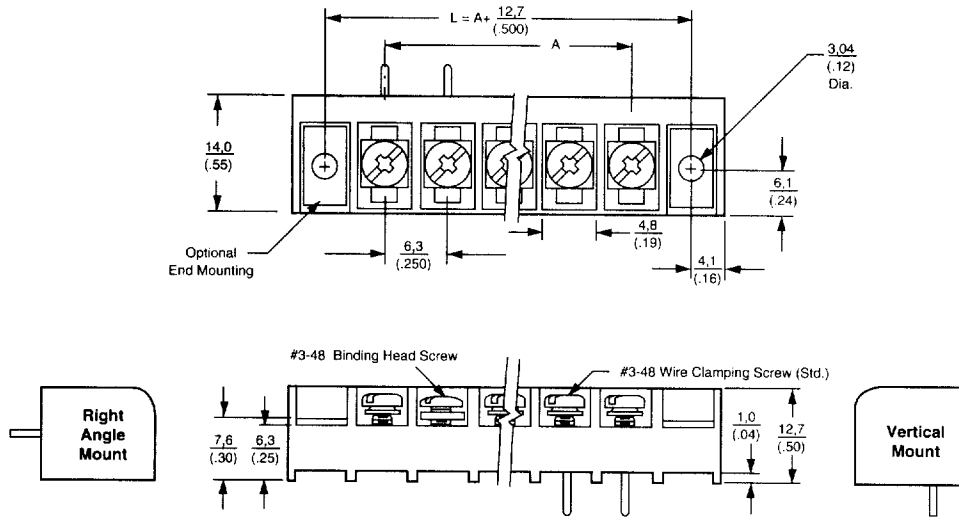


Wire Wrap

#3WWR not available



0.250" Pitch, Series #3



TERMINALS	A	TERMINALS	A
2	(0.25) 6,3	18	(4.25) 107,9
3	(0.50) 12,7	19	(4.50) 114,3
4	(0.75) 19,0	20	(4.75) 120,6
5	(1.00) 25,4	21	(5.00) 127,0
6	(1.25) 31,7	22	(5.25) 133,3
7	(1.50) 38,1	23	(5.50) 139,7
8	(1.75) 44,4	24	(5.75) 146,0
9	(2.00) 50,8	25	(6.00) 152,4
10	(2.25) 57,1	26	(6.25) 158,8
11	(2.50) 63,5	27	(6.50) 165,1
12	(2.75) 69,8	28	(6.75) 171,5
13	(3.00) 76,2	29	(7.00) 177,8
14	(3.25) 82,5	30	(7.25) 184,2
15	(3.50) 88,9	31	(7.50) 190,5
16	(3.75) 95,2	32	(7.75) 196,9
17	(4.00) 101,6		

For complete product information, order Catalog 1308389



Terminal Blocks