

NOTES:

1. SPECIFICATIONS:

ELECTRICAL:  
 WITHSTANDING VOLTAGE: MINIMUM 1000 V RMS @ SEA LEVEL  
 INSULATION RESISTANCE: INITIAL 5000 MEGOHMS MAXIMUM,  
 1000 MEGOHMS MIN. AFTER ENVIRONMENTAL TESTING.  
 CONTACT RATING: 5 AMPS  
 CONTACT RESISTANCE: 2.7 MILLIOHMS MAX.

MATERIALS:  
 INSULATOR: BLACK UL94V-0 RATED GLASS FILLED NYLON.  
 CONTACT(030-1952-000): COPPER ALLOY  
 CONTACT AREA PLATING: GOLD OVER NICKEL,  
 CONNECTOR SHELL: STEEL, PLATING ZINC WITH YELLOW CHROMATE.  
 4-40 CLINCH NUT: STEEL, PLATING ZINC WITH YELLOW CHROMATE.

ENVIRONMENTAL:  
 OPERATING TEMPERATURE: -65°C TO +125°C

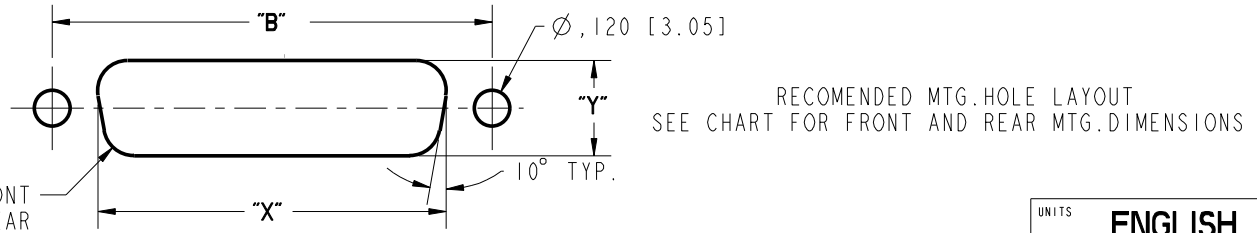
TERMINATION:  
 WIRE CRIMP # 20 TO 28 AWG WIRE.

TERMINATION-TOOLS:  
 CRIMP TOOL: M22520/2-01  
 INSERTION/EXTRACTION TOOL: CIET-20-HDB  
 POSITIONER: EP-580

2. DIMENSIONS IN [ ] ARE IN MILLIMETERS.

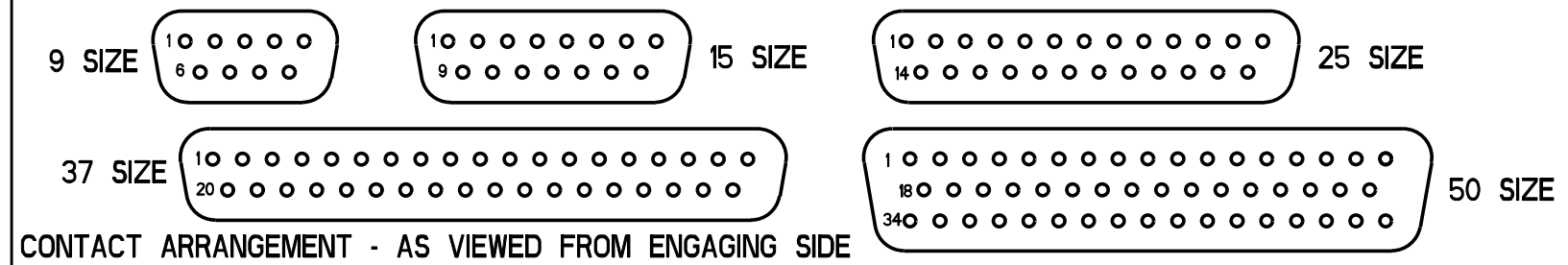
DRAWING REVISIONS			
REV	DOCUMENT	APP	DATE
A	DO 05-1146		

NUMBER OF POSITIONS	SELECTIVE GOLD FLASH PLATING (#4-40 THREAD MTG. HOLES)		CONTACTS	DIMENSION									FRONT MOUNTING HOLE DIMENSIONS		REAR MOUNTING HOLE DIMENSIONS	
	PART NO.	FACTORY NO.		"A"	"B"	"C"	"D"	"E"	"F"	"G"	"H"	"J"	"X"	"Y"	"X"	"Y"
9	DEUEH-9P	702 03 09 010	INCLUDED	1.213 [30.81]	.984 [24.99]	.697 [17.70]	.360 [9.14]	.759 [19.28]	.422 [10.72]	.236 [5.99]	.874 [22.20]	.806 [20.47]	.134 [3.40]	.449 [11.40]		
	DEUEH-9P-FO	702 03 09 015	NOT INCLUDED													
15	DAUEH-15P	702 03 15 010	INCLUDED	1.541 [39.14]	1.312 [33.32]	1.025 [26.03]	.494 [12.55]	1.083 [27.51]	.422 [10.72]	.513 [13.03]	1.202 [30.53]	1.134 [28.80]	.674 [17.10]	.449 [11.40]		
	DAUEH-15P-FO	702 03 15 015	NOT INCLUDED													
25	DBUEH-25P	702 03 25 010	INCLUDED	2.088 53.04]	1.852 [47.04]	1.583 [40.21]	.378 [9.60]	1.625 [41.28]	.426 [10.82]	.231 [5.87]	1.743 [44.27]	1.674 [42.52]	.326 [8.28]	.555 [14.10]		
	DBUEH-25P-FO	702 03 25 015	NOT INCLUDED													
37	DCUEH-37P	702 03 37 010	INCLUDED	2.729 [69.32]	2.500 [64.50]	2.231 [56.67]	.484 [12.29]	2.272 [57.71]	.534 [13.56]	.291 [7.39]	2.391 [60.73]	2.326 [59.08]	.218 [5.54]	.555 [14.10]		
	DCUEH-37P-FO	702 03 37 015	NOT INCLUDED													
50	DDUEH-50P	702 03 50 010	INCLUDED	2.635 [66.93]	2.406 [61.11]	2.127 54.02]	.484 [12.29]	.605 [15.37]	2.178 [55.32]	.534 [13.56]	2.297 [58.34]	.623 [15.82]	2.218 [56.34]	.555 [14.10]		
	DDUEH-50P-FO	702 03 50 015	NOT INCLUDED													



RECOMENDED MTG.HOLE LAYOUT  
 SEE CHART FOR FRONT AND REAR MTG.DIMENSIONS

**ROHS COMPLIANT**



CONTACT ARRANGEMENT - AS VIEWED FROM ENGAGING SIDE

UNITS	ENGLISH	PRO/E	Cinch	
DO NOT SCALE DRAWING	DRAWN BY V. SKUZA	DATE 06/17/05	TITLE D*U SERIES CRIMP & POKE CONNECTOR PLUG ASS'Y(#4-40 NUT)	
	DESIGN ENGINEER A. BALI	06/17/05	MATERIAL CONTROL SPEC NUMBER	
	DESIGN ENGINEERING MGR. A. SHAH	07/09/05	MATERIAL SPEC NUMBER	FINISH
	MFG. ENGINEERING J. OCEGUERA	07/07/05	CAD FILE NUMBER DXUEH-XXP	DRAWING NUMBER D*UEH-XXP
	QUALITY ASSURANCE A. VAZQUEZ	07/06/05	CAGE IDENT NO.   SIZE 71785   B	SCALE 1:1
			SHEET 1 OF 1	

MODELED BY:  
V. SKUZA

1700 FINLEY RD  
LOMBARD, IL. 60148

THIS DOCUMENT IS THE PROPERTY OF CINCH. NEITHER THIS DOCUMENT NOR ANY OF THE INFORMATION CONTAINED IN IT MAY BE DUPLICATED OR DISCLOSED WITHOUT PRIOR WRITTEN CONSENT OF CINCH.