

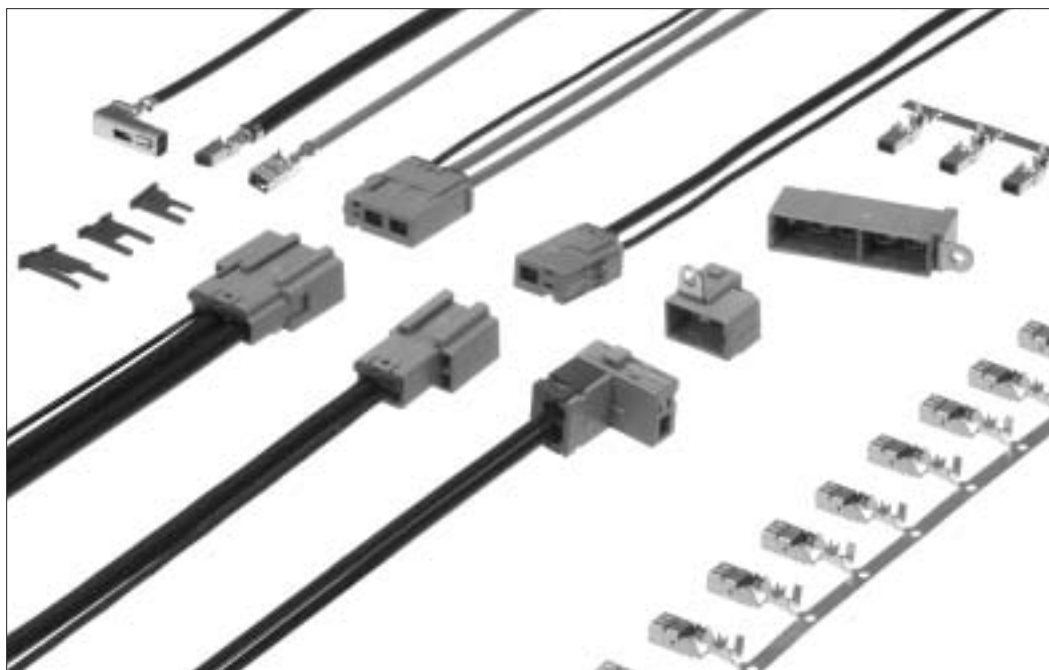
## Coaxial cable connection of Antennas, Sensors, and Communication Trunk Lines

Termination of coaxial cables in automotive, medical and instrumentation applications utilizes a single motion to crimp the center conductor, shield and outer insulation.

# GT13 Series

### — Connectors for coaxial cables —

< Several types and configurations: In-line, board mounted, combinations of coaxial cable with signal/power. Multi-position. >



### ■ Features

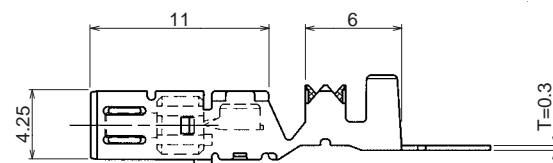
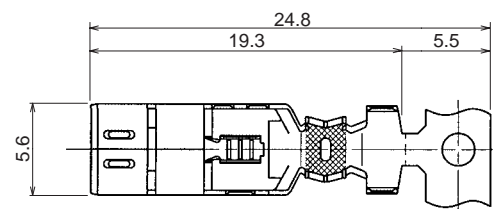
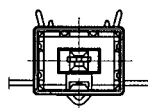
- **Cost efficient termination**  
Highly efficient and reliable single motion crimp termination allows high volume production with semi-automatic equipment.
- **Space-saving Design**
- **Lock-release latching system**
- **Shock / vibration resistant electrical connections**
- **Verification of the full contact insertion**

### ■ Applications

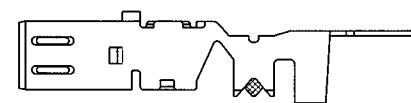
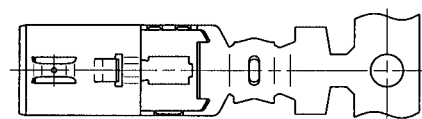
In-car communication, car sensors (temperature, pressure), automotive audio systems, GPS antenna systems, RACS antenna audio/video antenna systems, CRT displays, medical and measuring instrumentation, variety of communication equipment, office automation equipment, LAN systems.

## GT13 Series

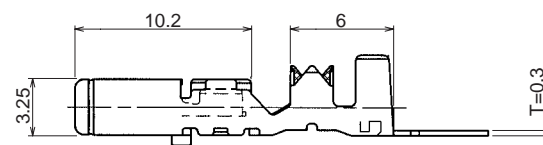
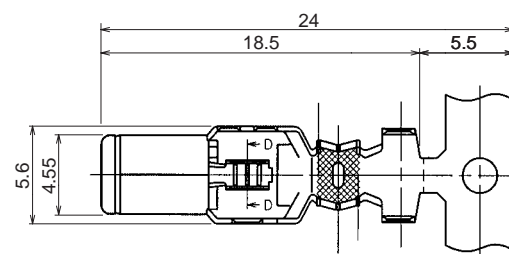
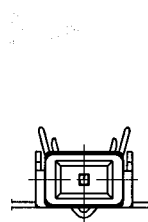
### F Terminals



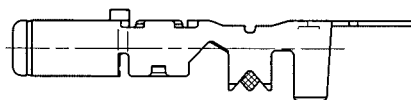
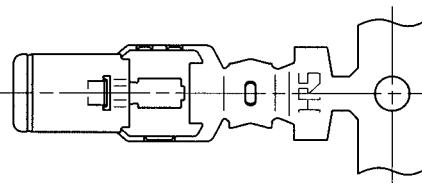
Part Number	HRS No.	Conductor Size (AWG)	Inner Insulation Diameter	Outer Diameter	Packaging
GT13-2428/1.6-2.9SCF	763-0001-3	AWG #24 to 28 or equivalent	1.5~2.0	1.6~3.4	3,000 pieces per reel
GT13-30/1.6-2.9SCF	763-0012-0	AWG #30 or equivalent		2.3~2.7	
GT13-2428/1.6-2.5SCF	763-0042-0	AWG #24 to 28 or equivalent			
GT13-2428/F4-5SCF	763-0051-1	AWG #24 to 28 or equivalent	3.0~3.6	4.6~50	2,200 pieces per reel
GT13-30/F4-5SCF	763-0067-1	AWG #30 or equivalent	2.5~2.9	3.6~4.0	
GT13-30/F3.3-3.8SCF	763-0052-4	AWG #30 or equivalent			



### M Terminals



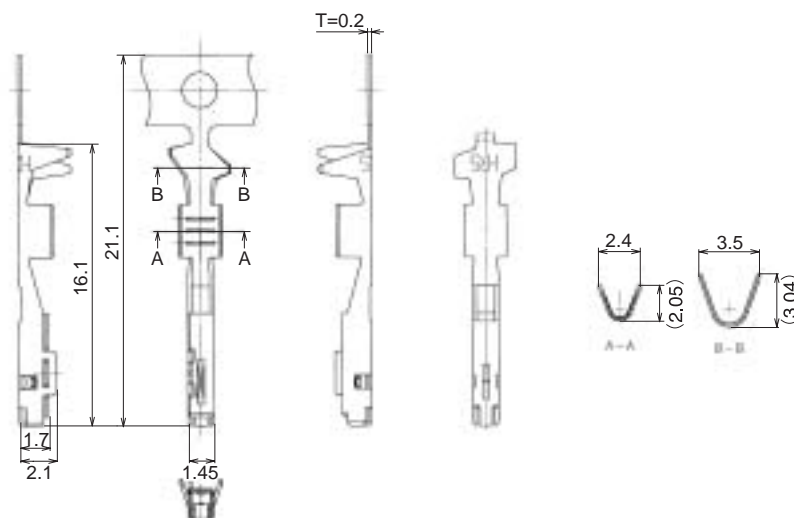
Part Number	HRS No.	Conductor Size (AWG)	Inner Insulation Diameter	Outer Diameter	Packaging
GT13-2428/1.6-2.9PCF	763-0002-6	AWG #24 to 28 or equivalent	1.5~2.0	1.6~3.4	4,000 pieces per reel
GT13-30/1.6-2.9PCF	763-0041-8	AWG #30 or equivalent		2.3~2.7	
GT13-2428/1.6-2.5PCF	763-0069-7	AWG #24 to 28 or equivalent			
GT13-2428/F4-5PCF	763-0054-0	AWG #24 to 28 or equivalent	3.0~3.6	4.6~50	2,200 pieces per reel
GT13-30/F4-5PCF	763-0066-9	AWG #30 or equivalent	2.5~2.9	3.6~4.0	
GT13-30/F3.3-3.8PCF	763-0053-7	AWG #30 or equivalent			



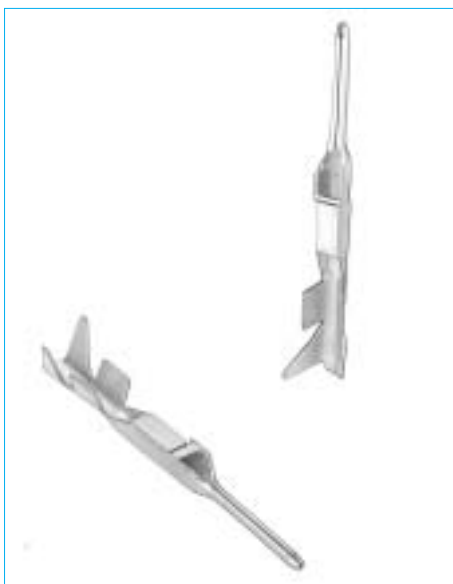
## F Connector Power Supply Terminal



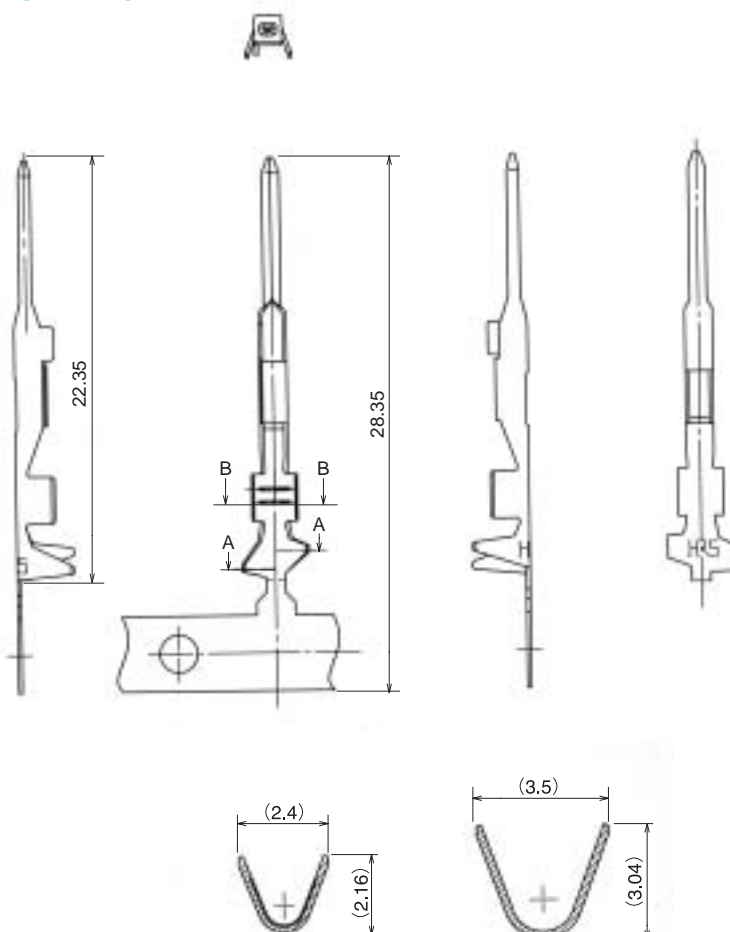
Part Number	CL No.	Packaging
GT10A-2022SCF	760-0014-6	8,000 pieces per reel



## M Connector Power Supply Terminal



Part Number	CL No.	Packaging
GT10SC-2022PCF	760-0016-1	7,000 pieces per reel

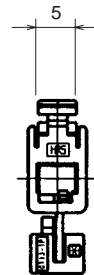
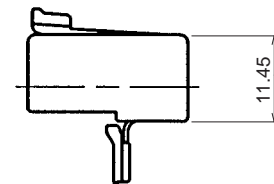
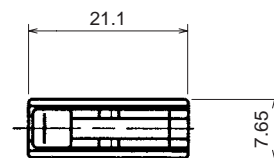
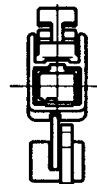


## GT13 Series

### F Housing

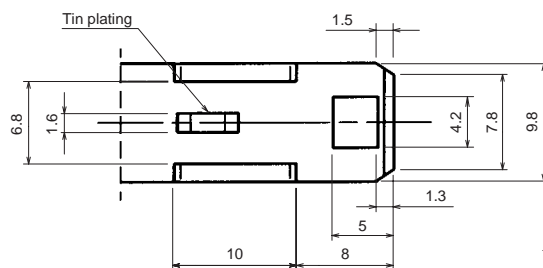
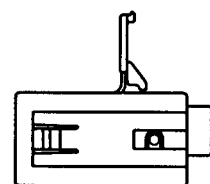
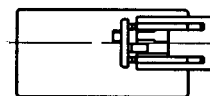
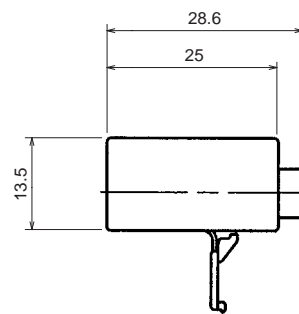
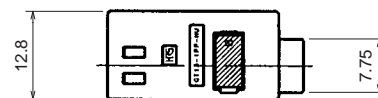
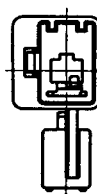


◆ Shown with inserted retainer.

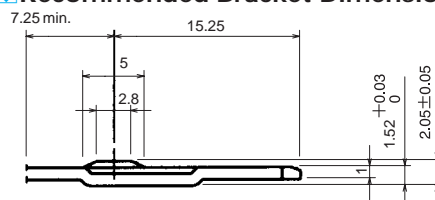


Part Number	HRS No.	Material	Color
GT13-1S-HU	763-0003-9	PBT	Light Gray

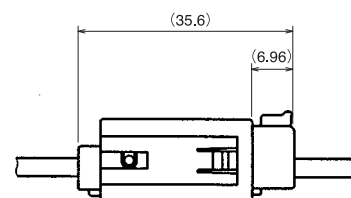
### M Housing



◆ Recommended Bracket Dimensions



◆ Fully mated connector assemblies



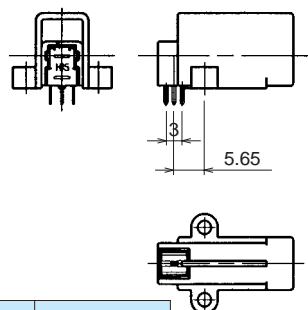
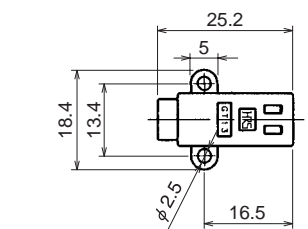
Part Number	HRS No.	Material	Color
GT13-1PP-HU	763-0004-1	PBT	Light Gray

## F Connectors

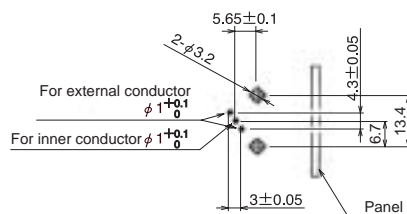
### One-position Type



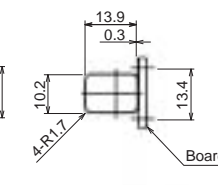
Part Number	HRS No.	Material	Color
GT13-1P-DS	763-0005-4	PBT	Light Gray



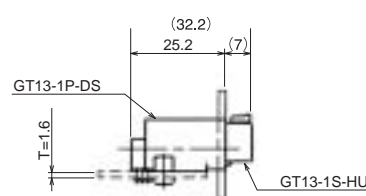
#### Recommended Board Mounting Pattern



#### Recommended Panel Cut-out



#### Fully mated connector assemblies

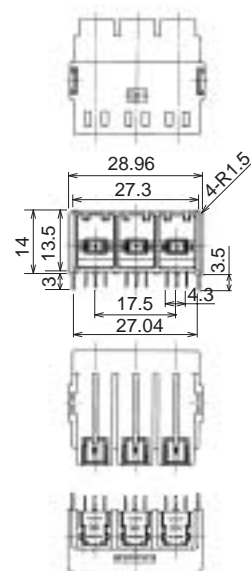


### 3-position type

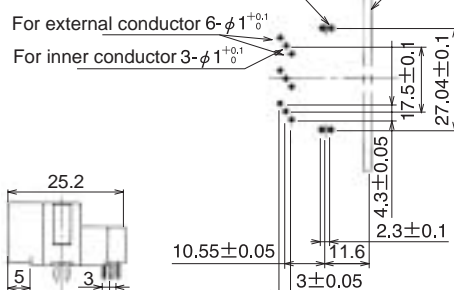


Part Number	CL No.
GT13-1/1/1P-DS	763-0007-0

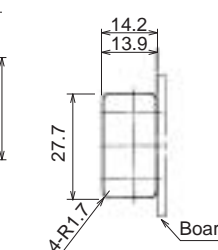
Material	Color
PBT	Light Gray



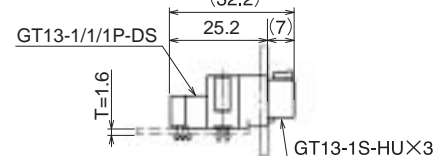
#### Recommended Board Mounting Pattern



#### Recommended Panel Cut-out



#### Fully mated connector assemblies

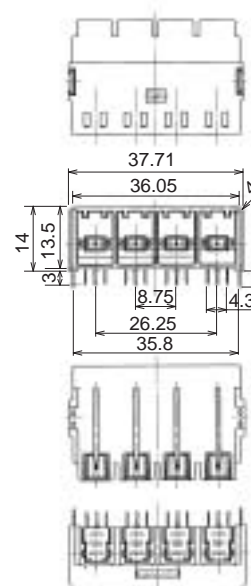


### 4-position type

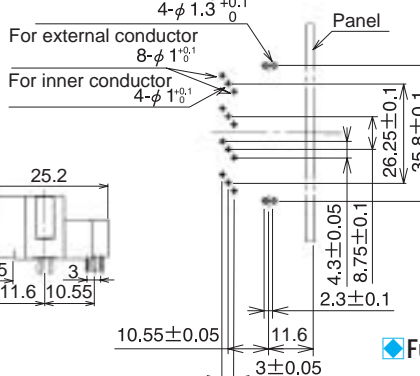


Part Number	CL No.
GT13-1/1/1/1P-DS	763-0008-2

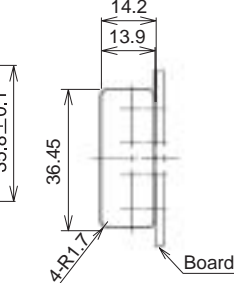
Material	Color
PBT	Light Gray



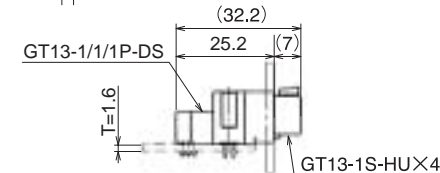
#### Recommended Board Mounting Pattern



#### Recommended Panel Cut-out



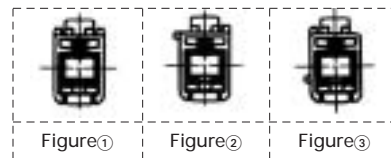
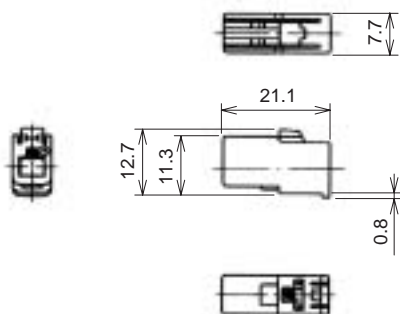
#### Fully mated connector assemblies



## GT13 Series

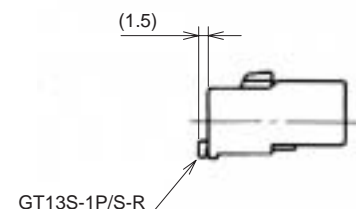
### 13S Series

#### F Housings

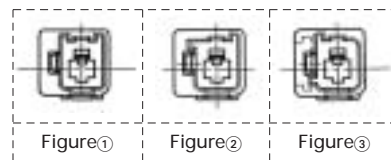
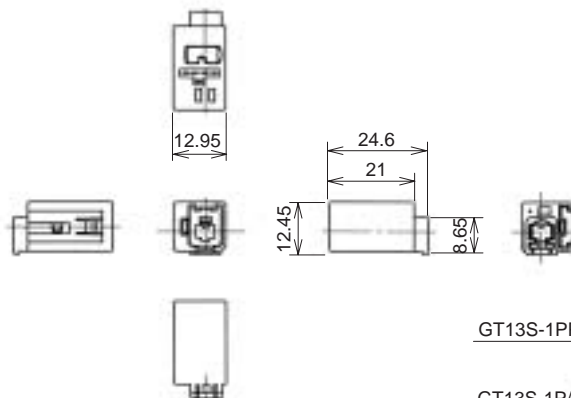


Part Number	CL No.	Material	Color	Key polarizing code
GT13S-1S-HU	763-0024-9	PBT	Light Gray	Figure①
GT13S-1S-HU (A)	763-0025-1	PBT	Brown	Figure②
GT13S-1S-HU (B)	763-0026-4	PBT	Green	Figure③

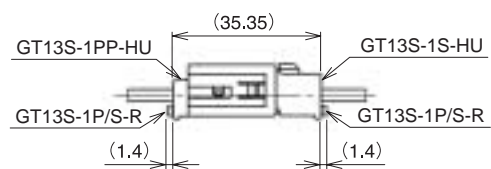
◆ Shown with inserted retainer.



#### M Housings



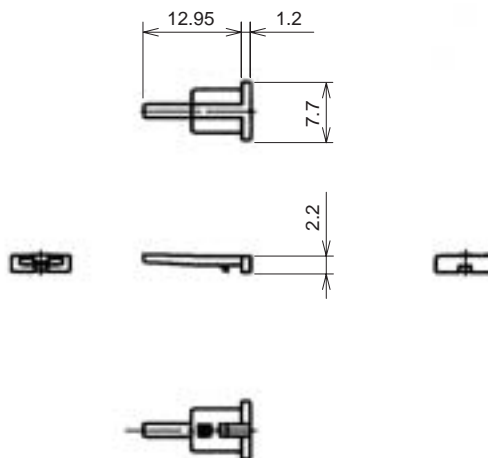
◆ Fully mated connector assemblies



Part Number	CL No.	Color	Key polarizing code
GT13S-1PP-HU	763-0030-1	Light Gray	Figure①
GT13S-1PP-HU (A)	763-0031-4	Brown	Figure②
GT13S-1PP-HU (B)	763-0032-7	Green	Figure③

Part	Material	Finish
Ground terminal	Copper alloy	Tin plating
Housing	PBT	—

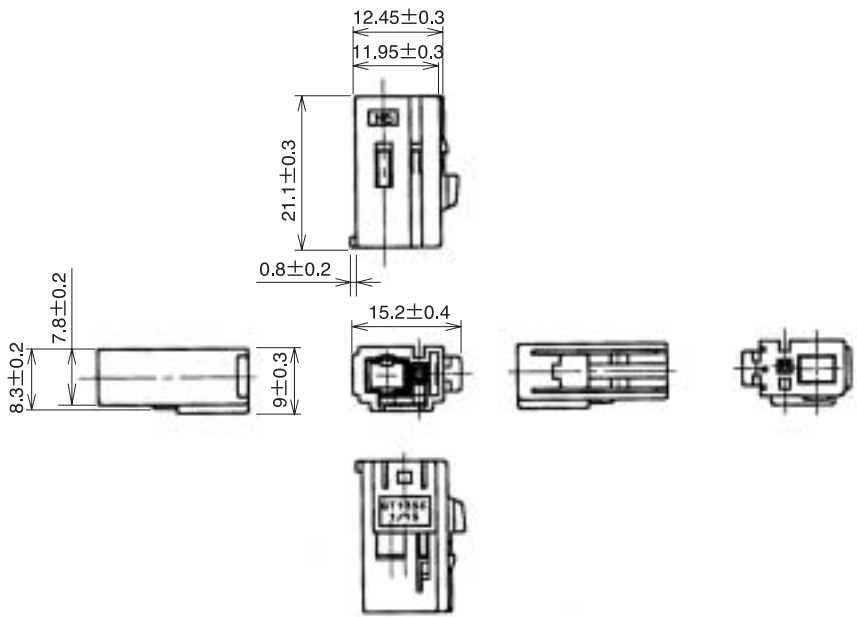
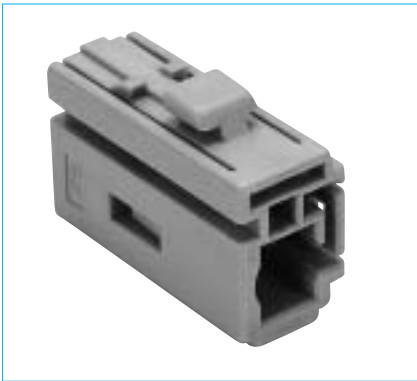
#### Retainer



Part Number	CL No.	Material	Color
GT13S-1P/S-R	763-0033-0	PBT	Light Gray

GT13SC Series

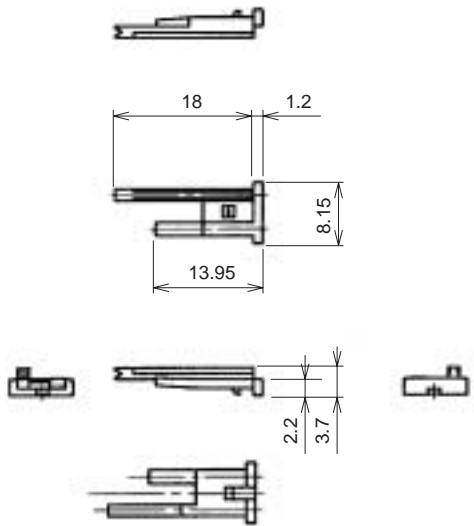
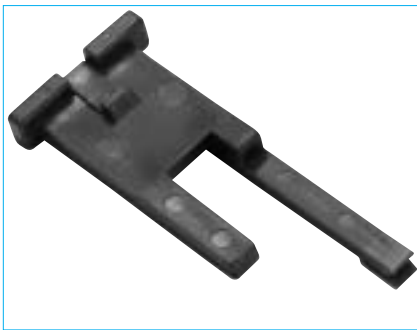
F Housing



Part Number	CL No.	Material	Color
GT13SC-1/1S-HU	763-0010-4	PBT	Light Gray

\* GT10A-2022SCF is used for power supply terminals.

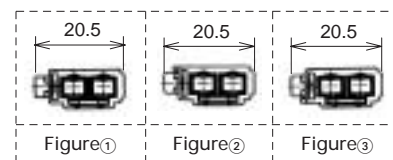
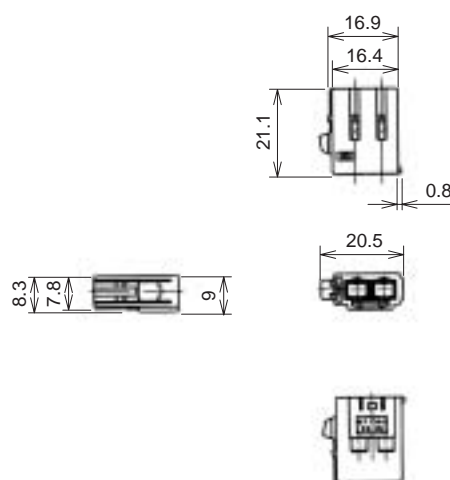
Retainer



Part Number	CL No.	Material	Color
GT13SC-1/1S-R	763-0011-7	PBT	Dark Gray

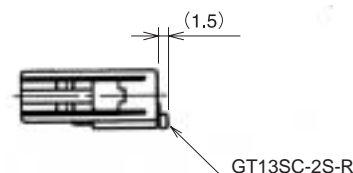
## GT13 Series

### F Housings (2 Position)

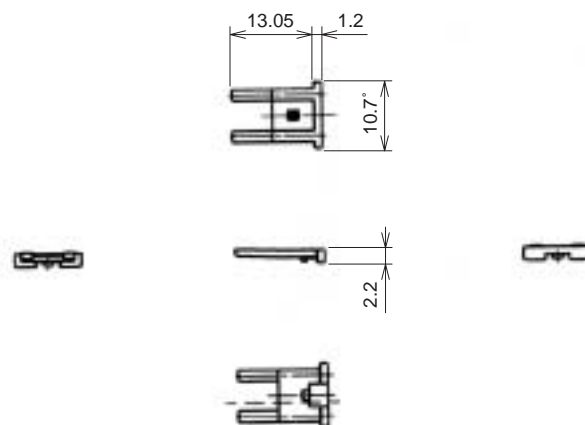


Part Number	CL No.	Color	Key polarizing code
GT13SC-2S-HU	763-0014-5	Light Gray	Figure①
GT13SC-2S-HU (A)	763-0043-3	Brown	Figure②
GT13SC-2S-HU (B)	763-0037-0	Green	Figure③

◆ Shown with inserted retainer.

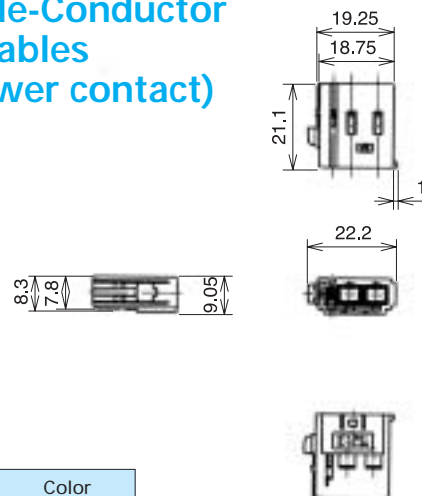


### ● Retainer (Used with GT13SC-2S-HU and GT13SCN-2PP-HU)

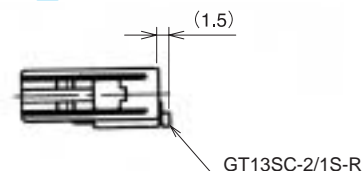


Part Number	CL No.	Material	Color
GT13SC-2S-R	763-0015-8	PBT	Dark Gray

### F Housing (Two Single-Conductor Coaxial Cables + One Power contact)



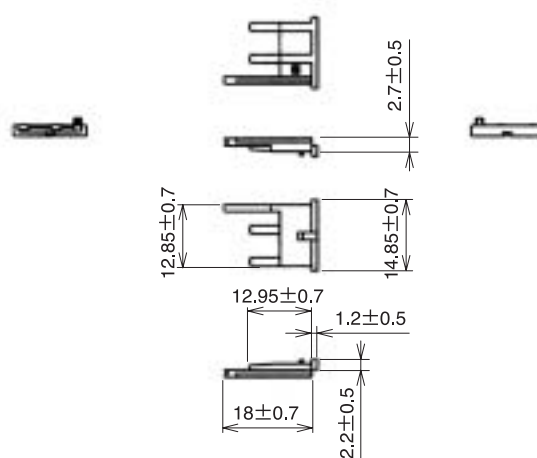
◆ Shown with inserted retainer.



Part Number	CL No.	Material	Color
GT13SC-2/1S-HU	763-0016-0	PBT	Light Gray

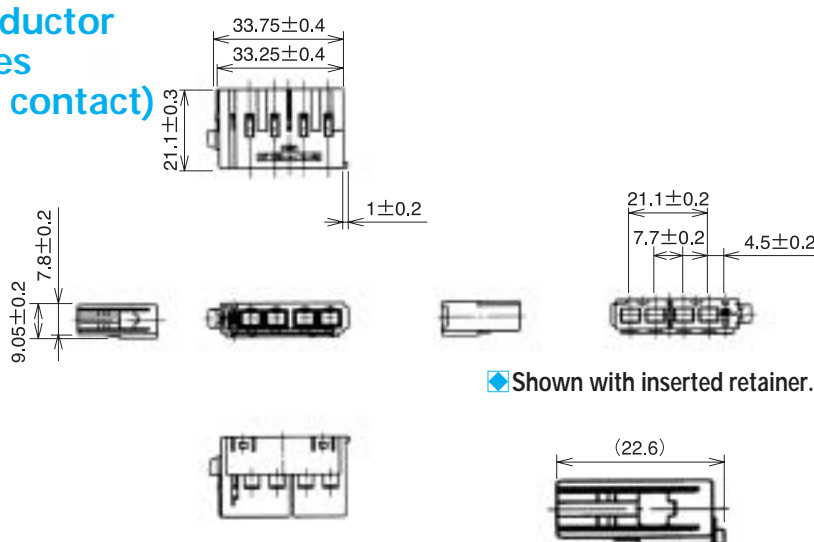
\* GT10A-2022SCF is used for power supply terminals.

## ● Retainer (Used with GT13SC-2/1S-HU)



Part Number	CL No.	Material	Color
GT13SC-2/1S-R	763-0017-3	PBT	Dark Gray

## ■ F Housings (4 Single-Conductor Coaxial Cables + One Power contact)

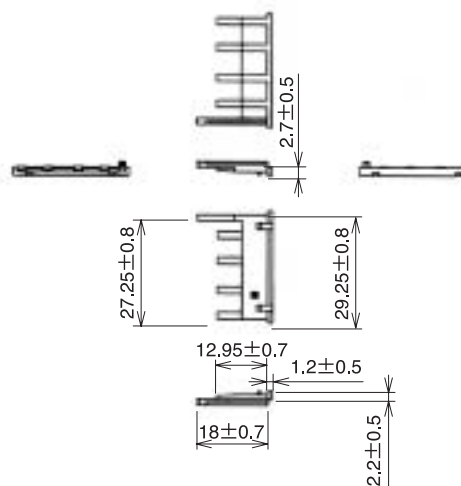


◆ Shown with inserted retainer.

Part Number	CL No.	Color
GT13SC-4/1S-HU	763-0021-0	Light Gray
GT13SC-4/1S-HU (A)	763-0022-3	Brown

\* GT10A-2022SCF is used for power supply terminals.

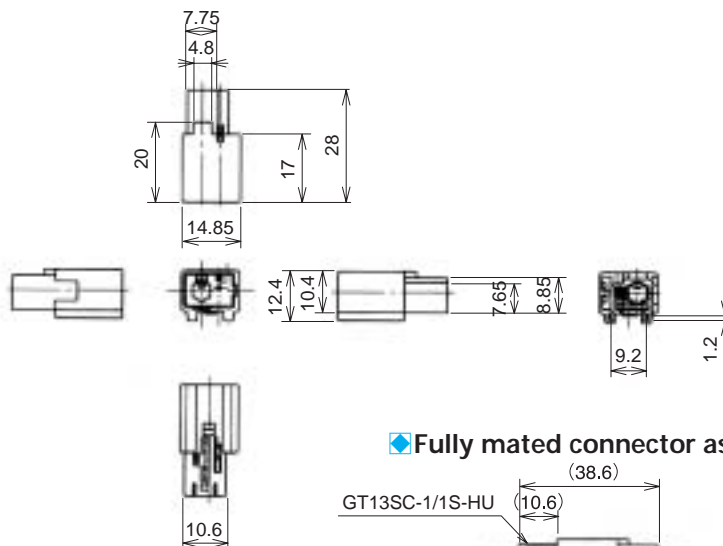
## ● Retainer (Used with GT13SC-4/1S-R)



Part Number	CL No.
GT13SC-4/1S-R	763-0023-6

## GT13 Series

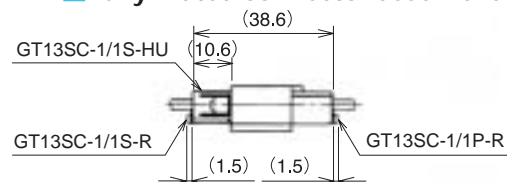
### M Connector



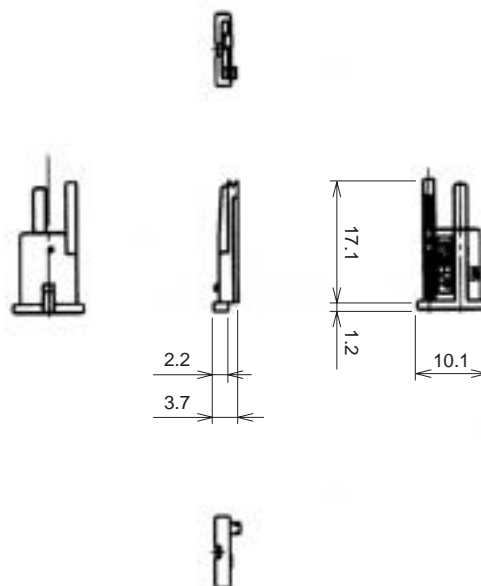
Part Number	CL No.	Material	Color
GT13SCN-1/1PP-HU	763-0036-8	PBT	Gray

\* GT10SC-2022PCF is used for power supply terminals.

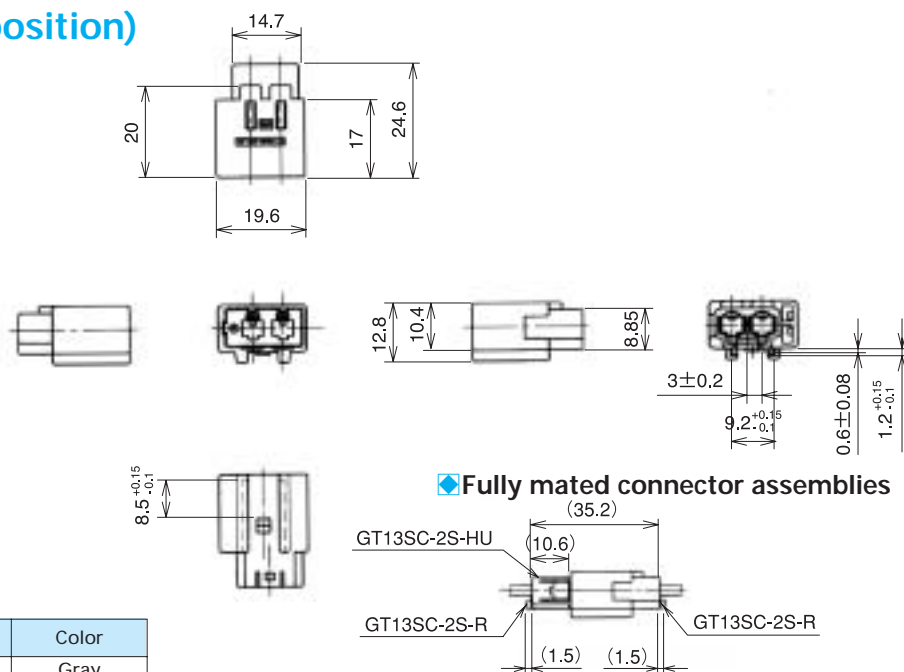
#### Fully mated connector assemblies



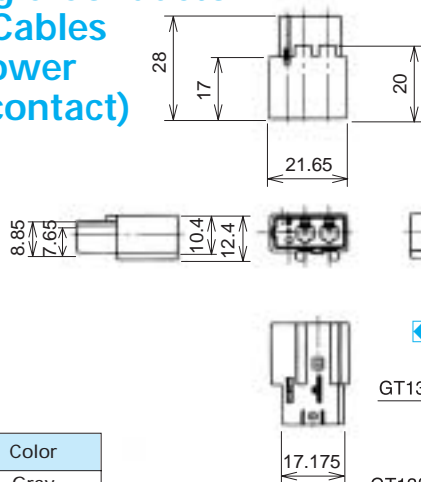
### Retainer (Used with GT13SCN-1/1PP-HU)



Part Number	CL No.	Material	Color
GT13SC-1/1P-R	763-0039-6	PBT	Dark Gray



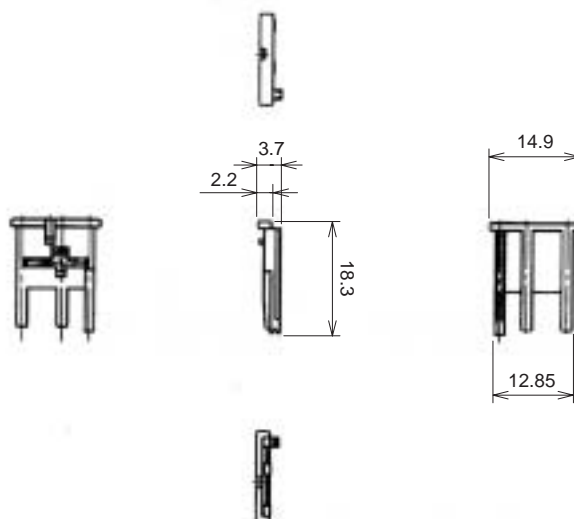
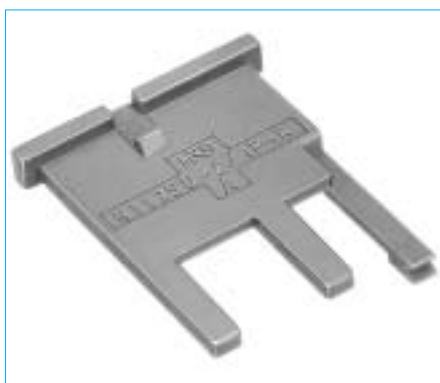
■ **M Connector (Two Single-Conductor Coaxial Cables + One Power contact)**



**Fully mated connector assemblies**

Technical drawing of a fully mated connector assembly. The drawing shows two connectors, GT13SCN-2/1S-HU and GT13SCN-2/1PP-HU, mated together. Dimensions are indicated: (38.6) for the total length, (10.6) for the offset, and 28 for the mating length. The drawing also shows the connectors GT13SCN-2/1S-R and GT13SCN-2/1PP-R.

● Retainer (Used with GT13SCN-2/1PP-HU)



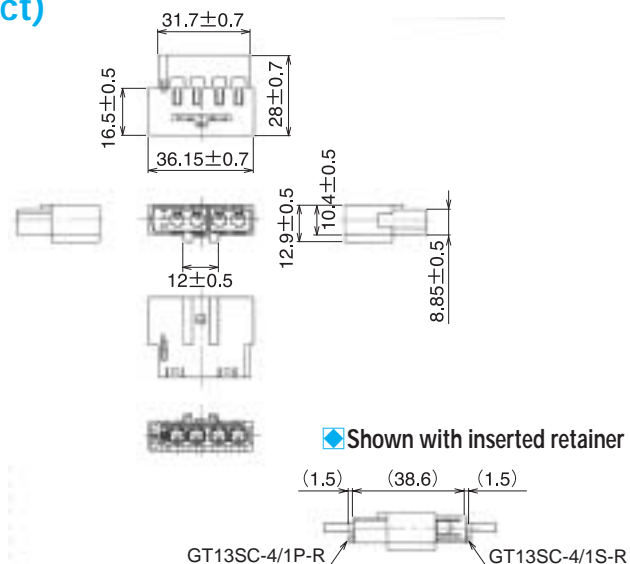
Part Number	CL No.	Material	Color
GT13SC-2/1PP-R	763-0040-5	PBT	Dark Gray

## GT13 Series

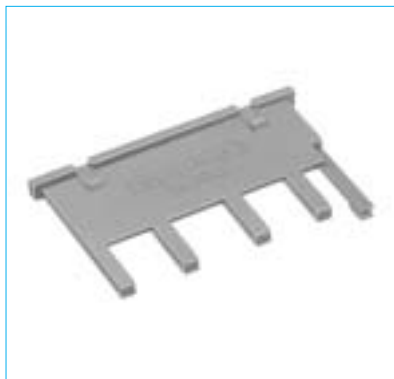
### M Connector (4 Single-Conductor Coaxial Cables + One Power contact)



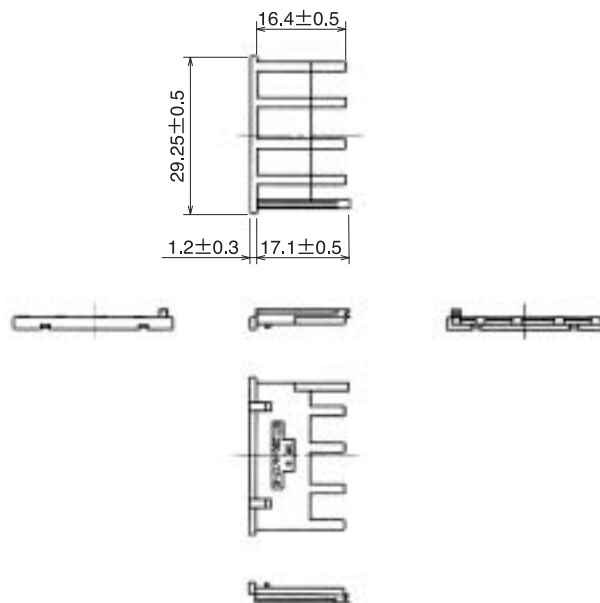
Part Number	HRS No.	Material	Color
GT13SCH-4/1PP-HU	763-0060-2	PBT	Light Gray



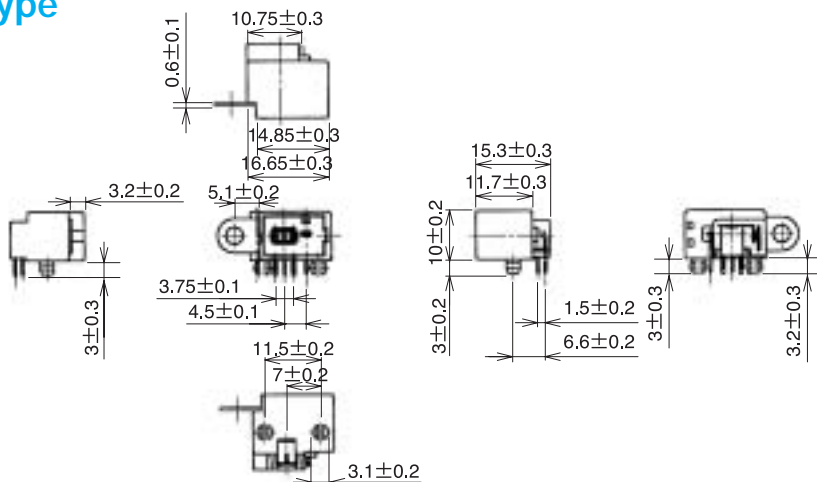
### ● Retainer



Part Number	HRS No.	Material	Color
GT13SC-4/1P-R	763-0061-5	PBT	Dark Gray

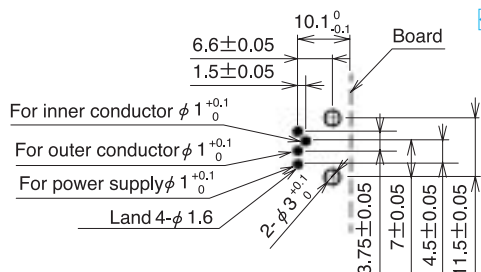


## Printed Circuit Board Type

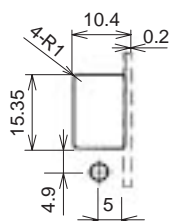


Part Number	CL No.	Material	Color
GT13SC-1/1PP-DS	763-0009-5	PBT	Light Gray

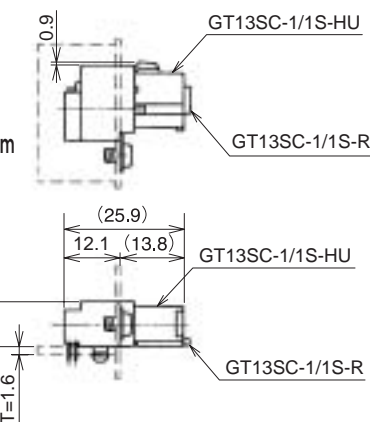
### Recommended Board Mounting Pattern



### Recommended Panel Dimensions Diagram



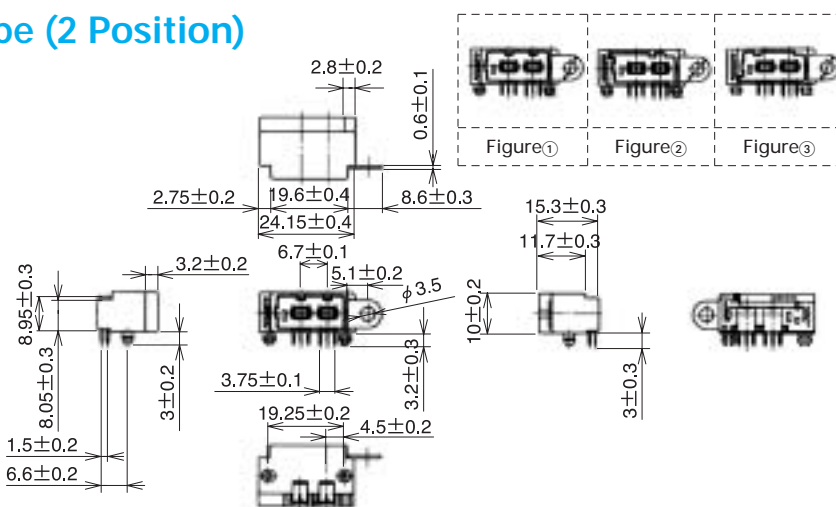
### Fully mated connector assemblies



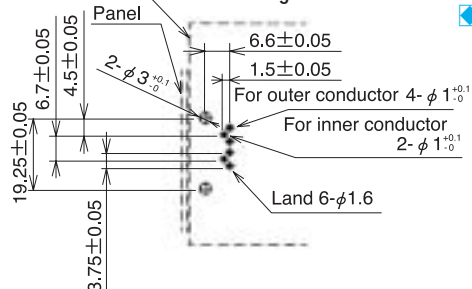
## Printed Circuit Board Type (2 Position)



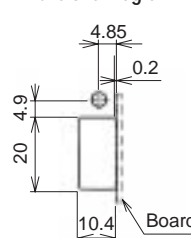
Part Number	CL No.	Material	Color
GT13SC-2PP-DS	763-0013-2	PBT	Gray
GT13SC-2PP-DS (A)	763-0034-2	PBT	Brown
GT13SC-2PP-DS (B)	763-0035-5	PBT	Green



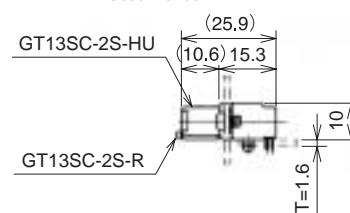
### Recommended Board Mounting Pattern

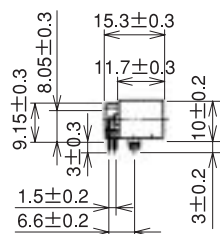


### Recommended Panel Dimensions Diagram



### Fully mated connector assemblies





**Recommended Board Mounting Pattern**

Land 4- $\phi$  1.6

For power supply  $\phi 1^{+0.1}_0$

For outer conductor  $\phi 1^{+0.1}_0$

For inner conductor  $\phi 1^{+0.1}_0$

Dimensions:  $17.5 \pm 0.3$ ,  $21.65 \pm 0.4$ ,  $23.45 \pm 0.4$ ,  $5.1 \pm 0.2$ ,  $8.6 \pm 0.3$ ,  $T=0.6$ ,  $1.5 \pm 0.05$ ,  $6.6 \pm 0.05$ ,  $10.1 \pm 0.1$ ,  $3.2 \pm 0.2$ ,  $3 \pm 0.3$ ,  $3.2 \pm 0.2$ ,  $3.75 \pm 0.05$ ,  $7 \pm 0.05$ ,  $4.5 \pm 0.05$ ,  $18.2 \pm 0.05$ ,  $6.7 \pm 0.05$ ,  $10.4$ ,  $0.2$ ,  $4.9$ ,  $22.05$ ,  $4R1$ ,  $5$ .

**Recommended Panel Dimensions Diagram**

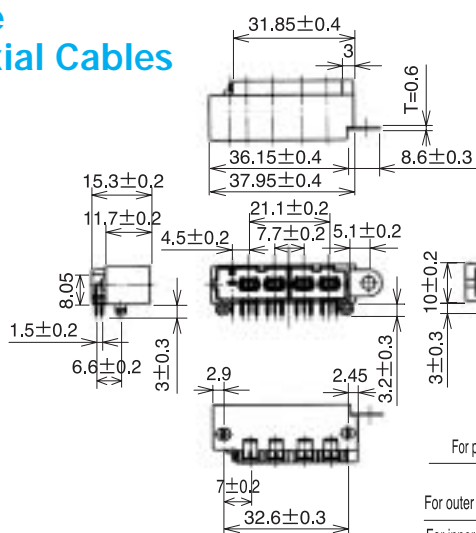
**Fully mated connector assemblies**

(25.9)

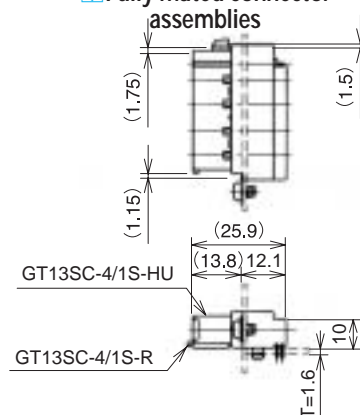
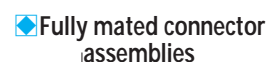
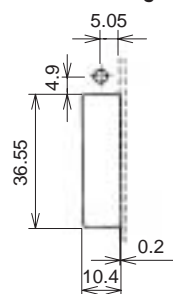
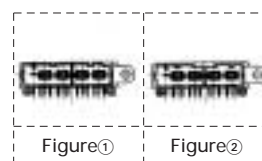
GT13SC-2/1S-HU

GT13SC-2/1S-R

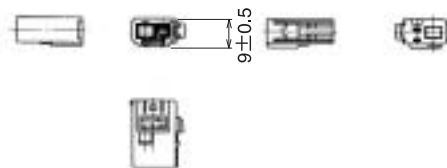
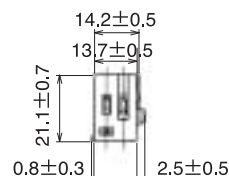
Dimensions:  $10.6$ ,  $15.3$ ,  $10$ ,  $T=1.6$ .



Part Number	CL No.	Material	Color	Key polarizing code
GT13SC-4/1PP-DS	763-0019-9	PBT	Gray	Figure①
GT13SC-4/1PP-DS (A)	763-0020-8	PBT	Brown	Figure②

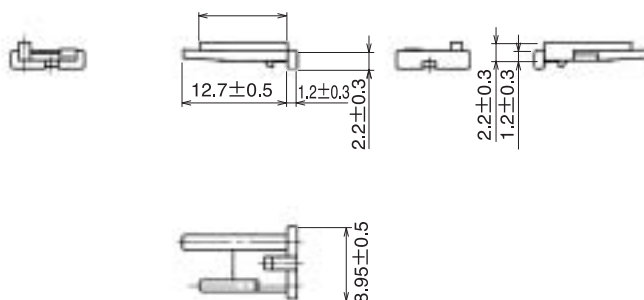
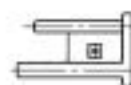


## F Housing (One Single-Conductor Coaxial Cables + One Power contact)



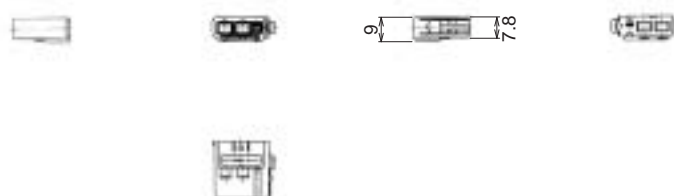
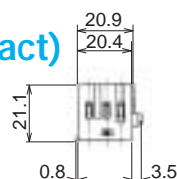
Part Number	HRS No.	Material	Color
GT13SH-1/1S-HU	763-0048-7	PBT	Light Gray
GT13SH-1/1S-HU(A)	763-0059-3	PBT	Brown

### ● Retainer



Part Number	HRS No.	Material	Color
GT13SH-1/1S-R	763-0049-0	PBT	Dark Gray

## F Housing (Two Single-Conductor Coaxial Cables + One Power contact)



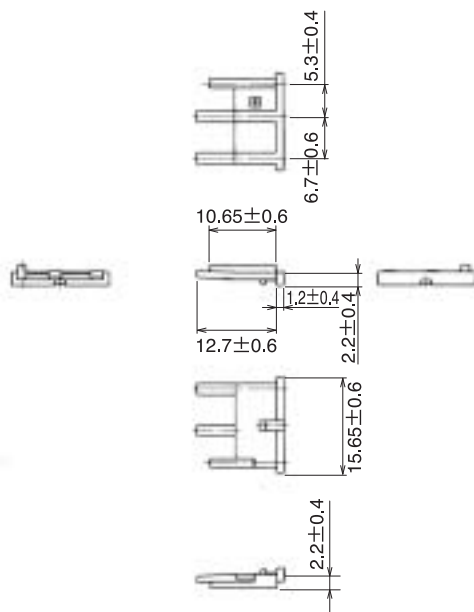
Part Number	HRS No.	Material	Color
GT13SH-2/1S-HU	763-0065-6	PBT	Light Gray

GT13 Series

● Retainer



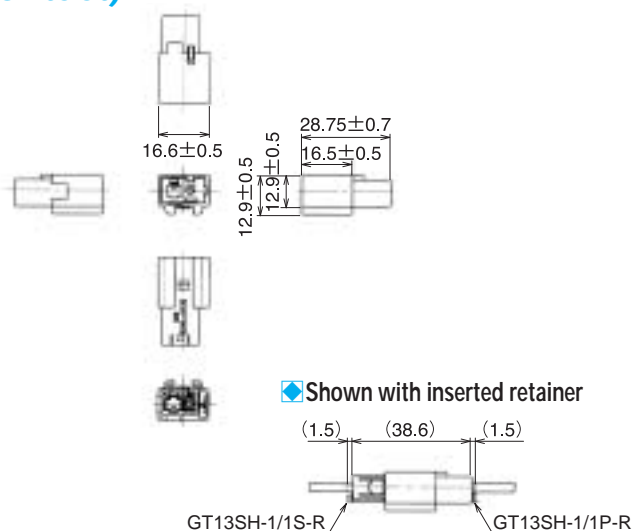
Part Number	HRS No.	Material	Color
GT13SH-2/1S-R	763-0064-3	PBT	Dark Gray



## M Connector (One Single-Conductor Coaxial Cables + One Power contact)



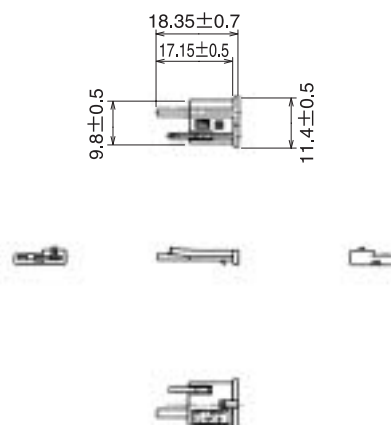
Part Number	HRS No.	Material	Color
GT13SH-1/1PP-HU	763-0055-2	PBT	Light Gray



### ● Retainer



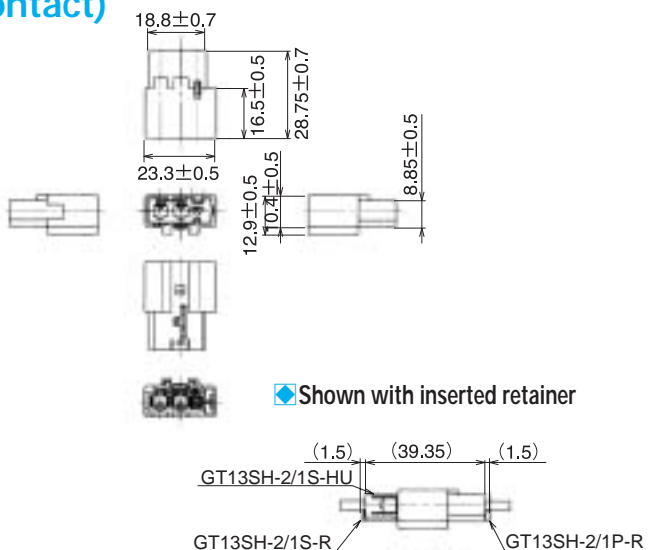
Part Number	HRS No.	Material	Color
GT13SH-1/1P-R	763-0056-5	PBT	Dark Gray



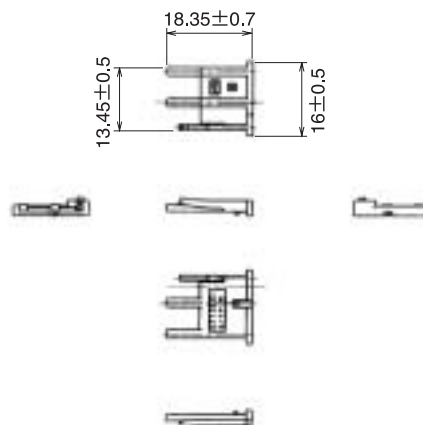
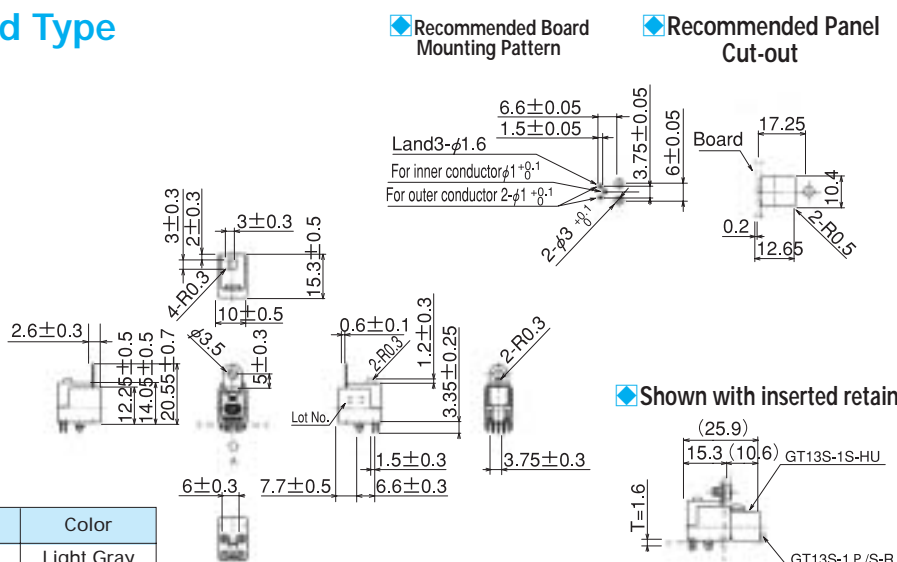
## M Connector (Two Single-Conductor Coaxial Cables + One Power contact)



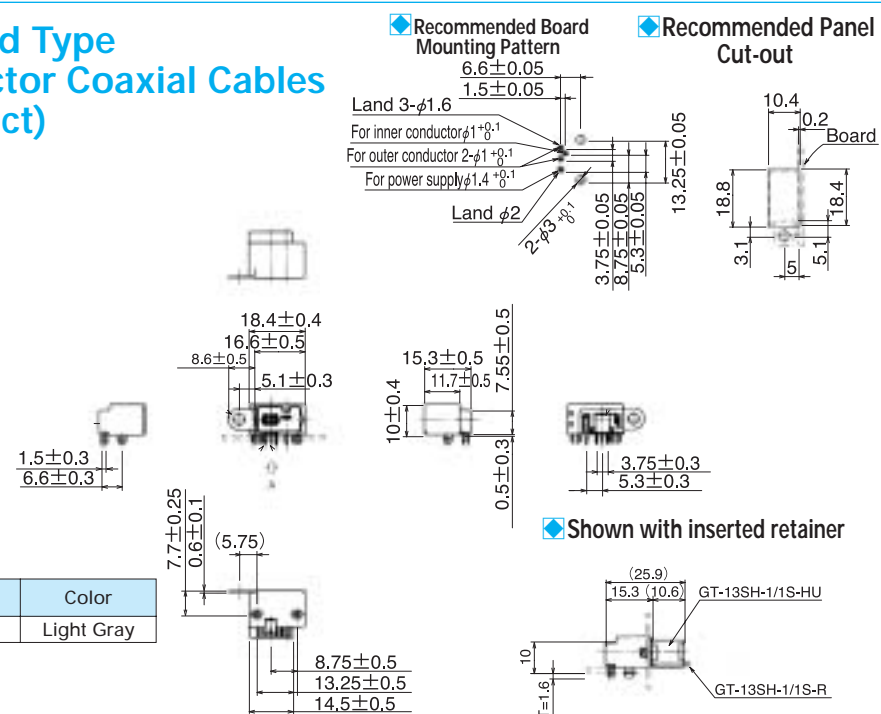
Part Number	HRS No.	Material	Color
GT13SH-2/1S-HU	763-0076-2	PBT	Light Gray



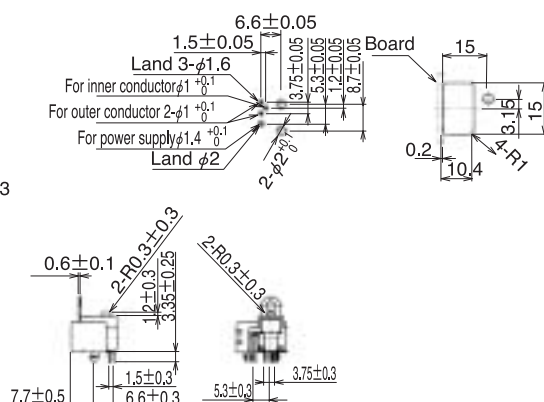
- Retainer

Printed Circuit Board Type

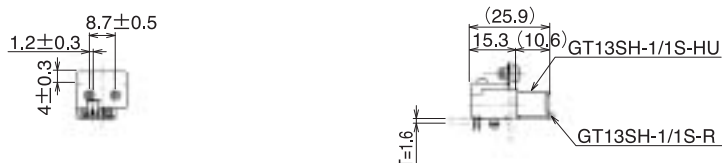
■ Printed Circuit Board Type  
(One Single-Conductor Coaxial Cables  
+ One Power contact)

66

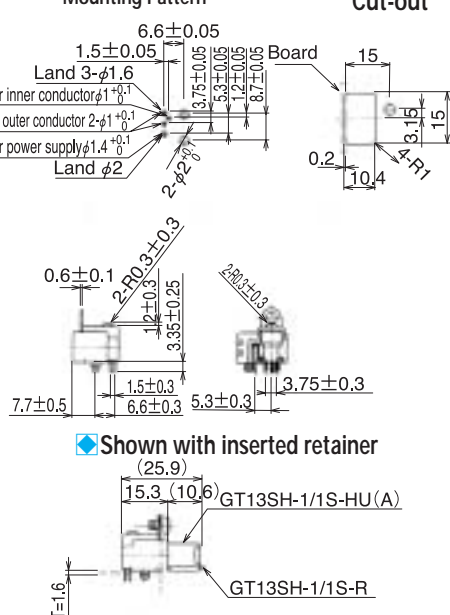
 **Recommended Panel Cut-out**



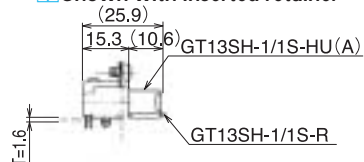
 Shown with inserted retainer



 **Recommended Panel Cut-out**

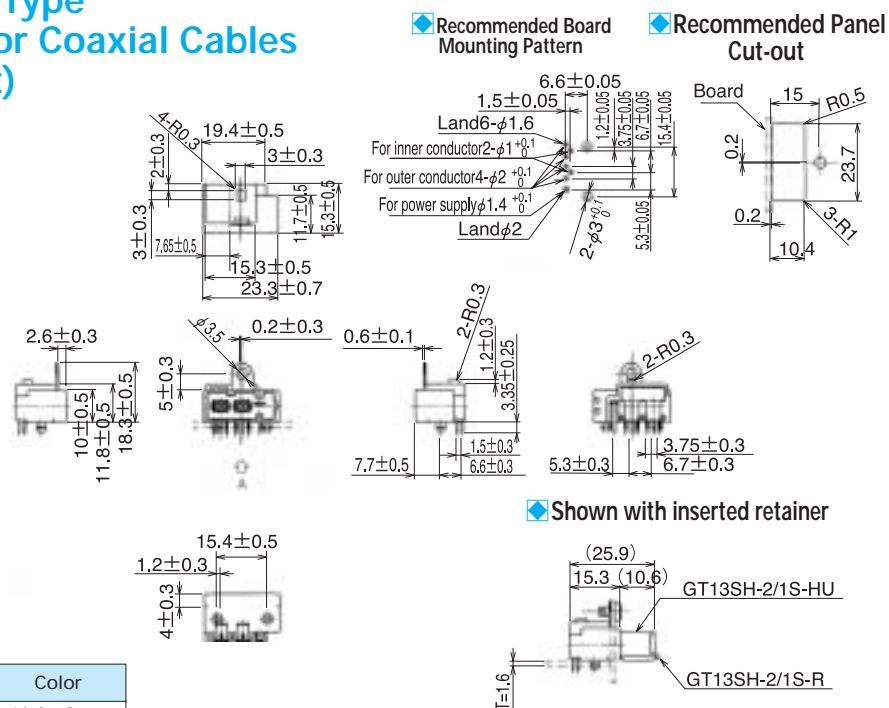


 Shown with inserted retainer



## GT13 Series

### Printed Circuit Board Type (Two Single-Conductor Coaxial Cables + One Power contact)



Part Number	HRS No.	Material	Color
GT13SHA-2/1PP-DS	763-0063-0	PBT	Light Gray

### Termination Tools

User's manuals are available. Please contact a Hirose Electric account representative.

#### Automatic Crimping Machine



Part Number CM-105

\* Crimp height setting tables are available for each cable type. Please contact your nearest Hirose Electric account representative.  
Different cables will require different crimp height settings.

● A special reel stand is required.

### Specifications

Item	Specification	Remarks
Specification	1.5tons	
Stroke Length	30mm	
Number of strokes	200spm (50Hz)	200spm (60Hz)
Weight	75kg	
Motor	0.2kW	100V AC
Crimping speed	2,000-4,000pcs, per day	