

POWER DIVIDERS, 12 WAY- 0°

FREQUENCY RANGE (MHZ)	INSERTION LOSS (dB) MAX	ISOLATION (dB) MIN	AMPLITUDE BALANCE (dB) MAX	PHASE BALANCE (deg) MAX	VSWR MAX	(1) POWER RATING (WATTS)	MODEL
2-100	1.5	25	0.2	4.0	1.40:1	1	P12-01-*
10-500	1.6	20	0.3	4.0	1.40:1	1	P12-02-*
100-1000	2.2	20	0.5	8.0	1.40:1	1	P12-03-*
800-1500	3.5	18	0.6	10.0	1.40:1	1	P12-04-*
1800-2200	1.2	14	0.3	6.0	1.70:1	5	PS12-01-455/1**
3700-4200	1.4	14	0.4	8.0	1.80:1	5	PS12-02-455/1**
5800-6400	1.6	14	0.5	9.0	1.80:1	5	PS12-03-455/1**
7200-8500	1.9	10	0.6	10.0	1.90:1	5	PS12-04-455/1**

* Available In Outline # 106 (Input - Pin 1, Outputs - Pins 2-13, Others Ground) & 409

** Available With SMA or "N" Connectors - Specify By Adding S Or N Suffix

POWER DIVIDERS, 16 WAY- 0°

FREQUENCY RANGE (MHZ)	INSERTION LOSS (dB) MAX	ISOLATION (dB) MIN	AMPLITUDE BALANCE (dB) MAX	PHASE BALANCE (deg) MAX	VSWR MAX	(1) POWER RATING (WATTS)	MODEL
.01-30	1.2	25	0.2	3.0	1.40:1	1	P16-01-456/1*
.5-125	1.2	20	0.3	5.0	1.40:1	1	P16-02-456/1*
1-200	1.4	20	0.5	8.0	1.40:1	1	P16-03-456/1*
1-500	2.0	20	0.6	10.0	1.50:1	1	P16-04-456/1*
20-1600	5.0	18	0.6	10.0	1.60:1	1	P16-05-456/1*
20-2000	8.0	16	0.8	12.0	1.80:1	1	P16-06-456/1*
3700-4200	1.8	20	0.5	5.0	1.50:1	5	PS16-05-456/1*
5800-6400	1.8	22	0.5	5.0	1.60:1	5	PS16-06-456/1*

* Available With SMA or "N" Connectors - Specify By Adding S Or N Suffix

POWER DIVIDERS, 32 WAY- 0°

FREQUENCY RANGE (MHZ)	INSERTION LOSS (dB) MAX	ISOLATION (dB) MIN	AMPLITUDE BALANCE (dB) MAX	PHASE BALANCE (deg) MAX	VSWR MAX	(1) POWER RATING (WATTS)	MODEL
.01-30	1.5	22	0.3	5.0	1.50:1	1	P32-01-457/1*
.05-100	1.6	20	0.5	9.0	1.50:1	1	P32-02-457/1*
1-200	1.8	20	0.8	12.0	1.60:1	1	P32-03-457/1*
1-500	3.0	18	0.8	15.0	1.80:1	1	P32-04-457/1*
3700-4200	2.5	20	0.8	7.0	1.60:1	5	PS32-05-457/1*
5800-6400	2.5	22	0.8	7.0	1.70:1	5	PS32-06-457/1*

* Available With SMA or "N" Connectors - Specify By Adding S Or N Suffix

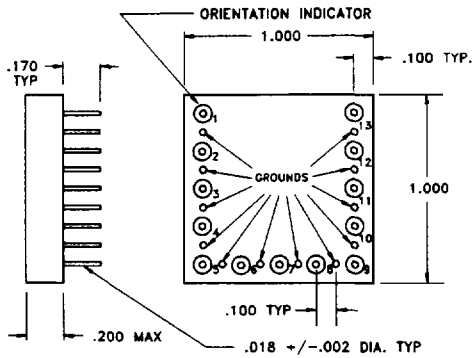
Note: (1) For Load VSWR Better Than 1.2:1

PULSAR MICROWAVE CORPORATION

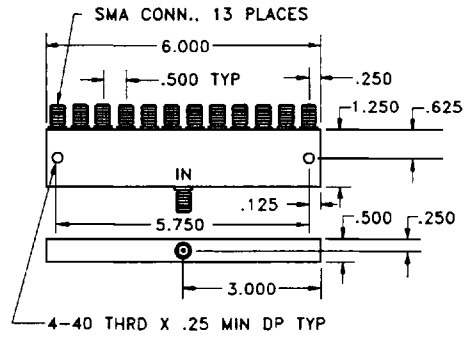
48 INDUSTRIAL WEST - CLIFTON, NEW JERSEY 07012

PHONE (201) 779-6262 - FAX (201) 779-2727

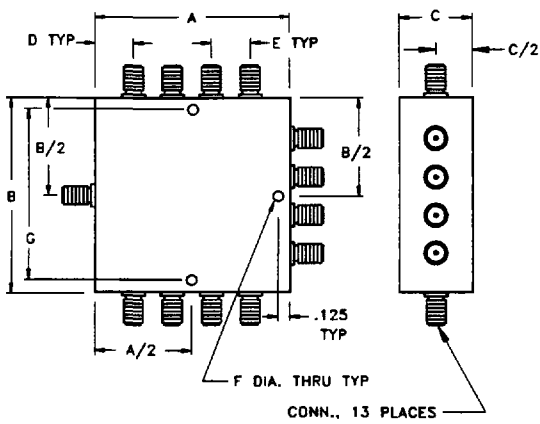
POWER DIVIDERS, MULTI-WAY- 0°



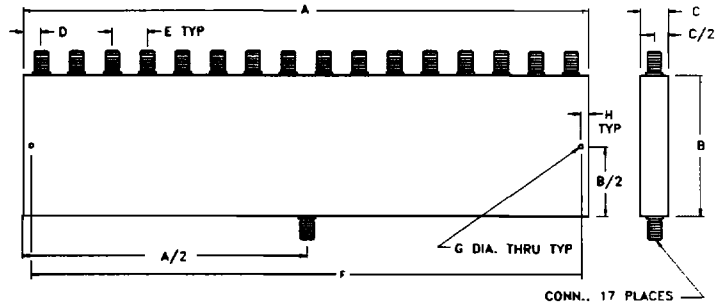
OUTLINE 106



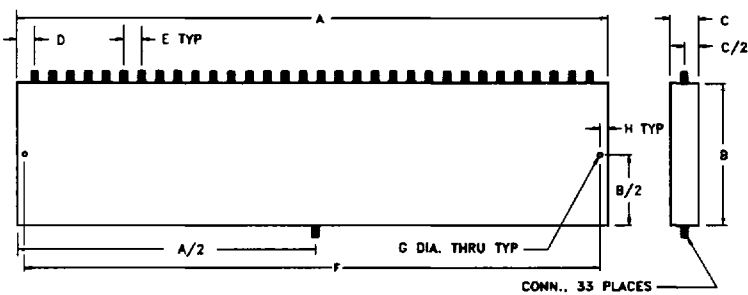
OUTLINE 409



OUTLINE 455



OUTLINE 456



OUTLINE 457

OUTLINE	CONN.	A	B	C	D	E	F	G	H
455/1S	SMA	3.00	3.00	0.40	0.75	0.50	.125	2.75	—
455/1N	N	3.55	4.00	1.00	0.50	0.85	.125	3.75	—
456/1S	SMA	6.40	2.85	0.40	0.20	0.40	5.90	.149	.250
456/1N	N	16.00	2.90	1.00	0.50	1.00	15.50	.149	.250
457/1S	SMA	12.80	3.50	0.40	0.20	0.40	12.30	.149	.250
457/1N	N	32.00	3.60	1.00	0.50	1.00	31.50	.149	.250

PULSAR MICROWAVE CORPORATION

48 INDUSTRIAL WEST - CLIFTON, NEW JERSEY 07012

PHONE (201) 779-6262 - FAX (201) 779-2727