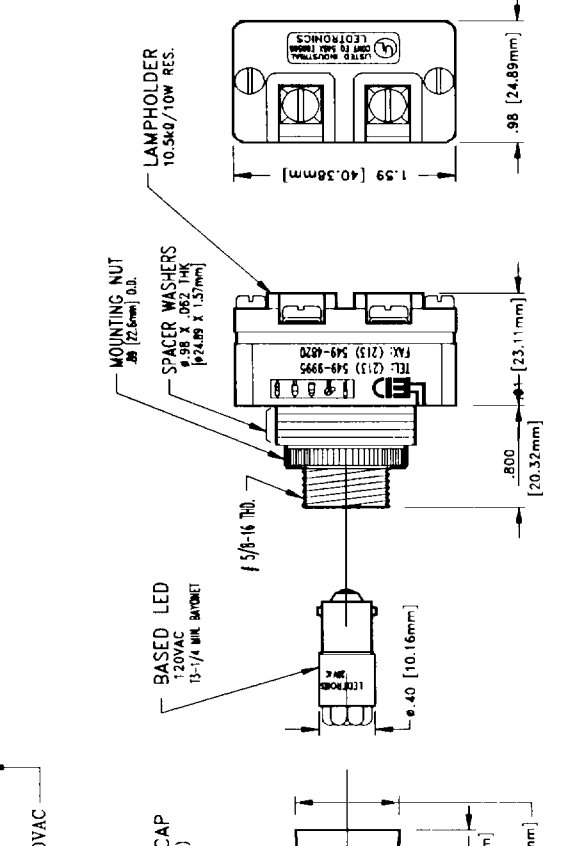


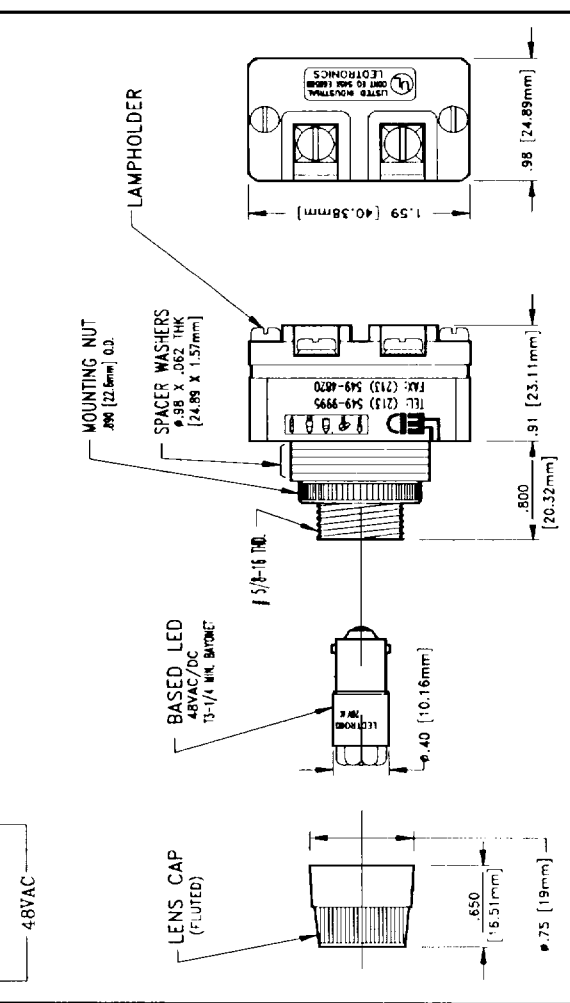
LTR	REVISION	DATE	APPD
—	ORIGINAL ISSUE	7.18.91	R. KUCHITA



NOTES:

- RPNL-1012 SERIES RELAMPABLE LED PILOT LIGHTS ARE DESIGNED TO BE DIRECTLY INTERCHANGEABLE WITH GE ET16 PILOT LIGHTS IN 48VAC APPLICATIONS ONLY.
- RPNL-1012 SERIES HAS MTC. HOLE WITH #625 [15.87mm] THRU. IT CAN BE USED IN PANEL THICKNESS RANGE OF .040 [1.016mm] TO .280 [7.11mm].
- RPNL-1012 SERIES USES A 48VAC, 7 LED CLUSTER LAMP AND IS INTERCHANGEABLE WITH #835 INCANDESCENT BULB USED IN ET16.
- FOR DIRECT VOLTAGE APPLICATIONS REQUIRING 28VDC, 120VAC AND ANY OTHER VOLTAGES, PLEASE CALL FACTORY FOR COMPLETE PART NUMBERS.
- LAMPHOLDER UL LISTED INDUSTRIAL CONTROL EQ 545X E68568.

LTR	REVISION	DATE	APPD
—	ORIGINAL ISSUE	7.18.91	R. KUCHITA



NOTES:

- RPNL-1016 SERIES RELAMPABLE LED PILOT LIGHTS ARE DESIGNED TO BE DIRECTLY INTERCHANGEABLE WITH GE ET16 PILOT LIGHTS IN 120VAC APPLICATIONS ONLY.
- RPNL-1016 SERIES HAS MTC. HOLE WITH #625 [15.87mm] THRU. IT CAN BE USED IN PANEL THICKNESS RANGE OF .040 [1.016mm] TO .280 [7.11mm].
- RPNL-1016 SERIES USES A 120VAC, 7-LED CLUSTER LAMP AND IS INTERCHANGEABLE WITH INCANDESCENT BULB NO. 120MB.
- FOR DIRECT VOLTAGE APPLICATIONS REQUIRING 28VDC, 48VAC AND ANY OTHER VOLTAGES, PLEASE CALL FACTORY FOR COMPLETE PART NUMBERS.
- LAMPHOLDER UL LISTED INDUSTRIAL CONTROL EQ 545X E68568.

LEDTRONICS PART NO.	LED RADIATION COLOR	LENS CAP PART NO.	BASED LED PART NO.	HOLDER PART NO.
RPNL-1012-001A	ULTRA RED 660nm	RPNL-1020-022A	B3127CR6-48VAC/12-P	MFVL
RPNL-1012-002A	HI-EFF RED 635nm	RPNL-1020-022A	B3127CR5-48VAC/12-P	MFVL
RPNL-1012-003A	ORANGE 605nm	RPNL-1020-044A	B3127C05-48VAC/12-P	MFVL
RPNL-1012-004A	YELLOW 585nm	RPNL-1020-044A	B3127C05-48VAC/12-P	MFVL
RPNL-1012-005A	LIME YELLOW 570nm	RPNL-1020-001A	B3127C05-48VAC/12-P	MFVL
RPNL-1012-006A	HI-EFF GREEN 565nm	RPNL-1020-066A	B3127C05-48VAC/12-P	MFVL
RPNL-1012-007A	DEEP GREEN 555nm	RPNL-1020-066A	B3127C05-48VAC/12-P	MFVL
RPNL-1012-008A	BLUE 470nm	RPNL-1020-088A	B3127C85-48VAC/12-P	MFVL
RPNL-1012-026A	WHITE 635/565nm	RPNL-1020-101A	B3127C05-48VAC/12-P	MFVL

TITLE		DRAWING NO.		DATE	
RPNL-1012-00XA		RPNL1012		7.18.91	
MATERIAL		CHKD		REV.	
AS SHOWN		R. KUCHITA		—	
FINISH		USED ON			
CODE IDENT NO		SCALE		SHEET 1 OF 1	
8Z410		1:1			

TOLERANCES UNLESS OTHERWISE SPECIFIED		DIMENSIONS IN INCHES PER ANSI-Y14.5	
.XXX ± .010	.XX ± .025	ANGLES ± 0° 30'	
FRACT. ± 1/32			

LEDTRONICS		4009 Pacific Coast Hwy.		Torrance, CA 90505	
------------	--	-------------------------	--	--------------------	--