

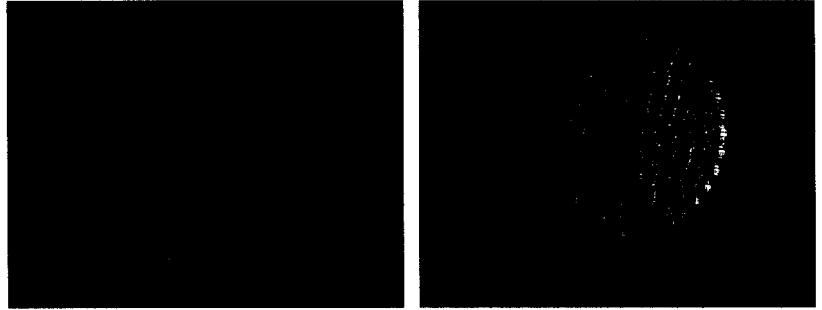
## 8" Round Traffic Signals

### Applications/Uses

- Street traffic lights
- Railroad crossing lights
- Large warning lights

### Features/Options

- Low power consumption compared to traditional lights
- Lasts longer than traditional lights
- Operates on standard 110V AC
- Easy hookup wiring



Part Number	Emitted Color	Wavelength (nm)	View Angle	Intensity per Aggregate Unit (Cd)	Fwd Voltage per Circuit (Vf) (Typical)	Lens Cover	Figure
SSP-TSC8062UE84	Ultra Emerald Green	505	28	140	110 AC	Clear	1
SSP-TSC8063S84	Super Yellow	590	28	400	110 AC	Clear	1
SSP-TSC8066U84	Ultra Red	626	28	450	110 AC	Clear	1

## 12" Round Traffic Signals

Part Number	Emitted Color	Wavelength (nm)	View Angle	Intensity per Aggregate Unit (Cd)	Fwd Voltage per Circuit (Vf) (Typical)	Lens Cover	Figure
SSP-TSC1222UE126	Ultra Emerald Green	505	28	400	110 AC	Clear	2
SSP-TSC1223S126	Super Yellow	590	28	800	110 AC	Clear	2
SSP-TSC1226U126	Ultra Red	626	28	800	110 AC	Clear	2

