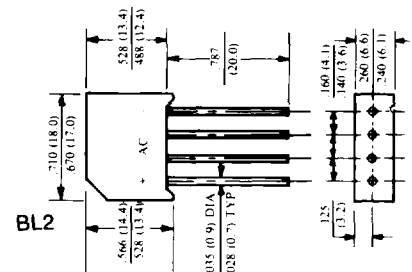


# BRIDGE RECTIFIERS

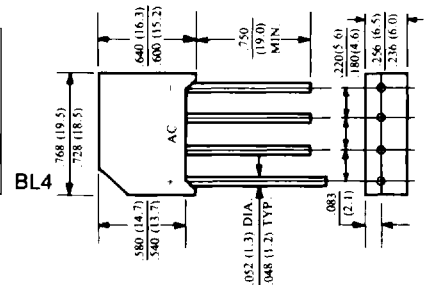
Operating Temperature - 65°C to +125°C

TYPE	INDUSTRIAL	PEAK INVERSE	MAX. AVG RECT	MAX. FRD SURGE	MAX. FRD VOLTAGE	MAX. REVERSE CURRENT	OUTLINE INCHES (mm)
	PART NO.	VOLTAGE	CURRENT	CURRENT 1 CYCLE 60 HZ	@ TA 25°C @ RATED CURRENT	@ 25°C @ RATED PIV	
	IND. P/N.	Io (A) @ Ta (°C)	IFSM (APK)	VFM (V)	Ir (µA)		
BL1-005	RS101	50	<b>1A</b> @40°C	30	1.0V @ 1A	10	
BL1-01	RS102	100					
BL1-02	RS103	200					
BL1-04	RS104	400					
BL1-06	RS105	600					
BL1-08	RS106	800					
BL1-10	RS107	1000					
DF-005	DF-005M	50	<b>1A</b> @40°C	50	1-1V @ 1A	10	
DF-01	DF-01M	100					
DF-02	DF-02M	200					
DF-04	DF-04M	400					
DF-06	DF-06M	600					
DF-08	DF-08M	800					
DF-10	DF-10M	1000					
W-005M	W005M	50	<b>1.5A</b> @25°C	50	1.1V @ 1A	10	
W-01M	W01M	100					
W-02M	W02M	200					
W-04M	W04M	400					
W-06M	W06M	600					
W08M	W08M	800					
W-10M	W10M	1000					
W2-005M	2W005M	50	<b>2A</b> @25°C	50	1.0V @ 1A	10	
W2-01M	2W01M	100					
W2-02M	2W02M	200					
W2-04M	2W04M	400					
W2-06M	2W06M	600					
W2-08M	2W08M	800					
W2-10M	2W10M	1000					

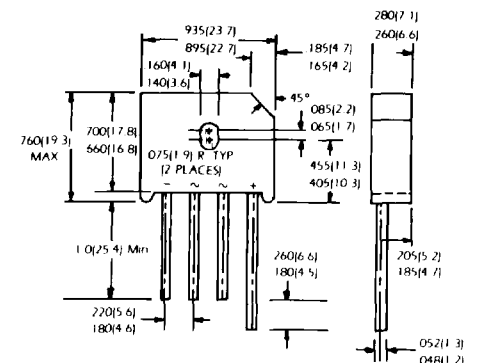
BL2-005	MDA200	50	<b>2A</b> @40°C	50	1.0V @ 1A	10
BL2-01	MDA201	100				
BL202	MDA202	200				
BL204	MDA204	400				
BL206	MDA206	600				
BL208	MDA208	800				
BL210	MDA210	1000				



BL4-005	KBL005	50	<b>4A</b> 4A @ 40°C WITH 70mm² x 1.5t COPPER 2.5A @ 40°C WITHOUT HEATSINK	200	1.1V @ 3A	10
BL4-01	KBL01	100				
BL4-02	KBL02	200				
BL4-04	KBL04	400				
BL4-06	KBL06	600				
BL4-08	KBL08	800				
BL4-10	KBL10	1000				



BU4-005	KBU4A	50	<b>4A</b> @ Tc 100°C	200	1V @ 4A	10
BU4-01	KBU4B	100				
BU4-02	KBU4D	200				
BU4-04	KBU4G	400				
BU4-06	KBU4J	600				
BU4-08	KBU4K	800				
BU4-10	KBU4M	1000				
BU6-005	KBU6A	50	<b>6A</b> @ Tc 100°C	250	1V @ 6A	10
BU6-01	KBU6B	100				
BU6-02	KBU6D	200				
BU6-04	KBU6G	400				
BU6-06	KBU6J	600				
BU6-08	KBU6K	800				
BU6-10	KBU6M	1000				
BU8-005	KBU8A	50	<b>8A</b> @ Tc 100°C	300	1V @ 8A	10
BU8-01	KBU8B	100				
BU8-02	KBU8D	200				
BU8-04	KBU8G	400				
BU8-06	KBU8J	600				
BU8-08	KBU8K	300				
BU8-10	KBU8M	1000				



BU

# BRIDGE RECTIFIERS

Operating Temperature Range: 1A to 10A, -55°C to +125°C  
15A to 35A, -55°C to +175°C

TYPE	INDUSTRIAL PART NO	PEAK INVERSE VOLTAGE	MAX. AVG. RECT. CURRENT	MAX. FWD SURGE CURRENT 1 CYCLE 60 HZ	MAX. FWD VOLTAGE @ TA 25°C @ RATED CURRENT	MAX. REVERSE CURRENT @ 25°C @ RATED PIV	OUTLINE INCHES (mm)					
		P <sub>IV</sub> (V)	I <sub>o</sub> (A) @ T <sub>a</sub> (°C)	I <sub>FSM</sub> (A <sub>PK</sub> )	V <sub>FM</sub> (V)	I <sub>r</sub> (μA)						
BC5-01	B40C5000	100	<b>5A</b> @45°C WITH 200cm <sup>2</sup> x 1.5t COPPER 3.3A @ 45°C WITHOUT HEATSINK	100A	1.1V @ 5A	10						
BC5-02	B80C5000	200										
BC5-03	B125C5000	300										
BC5-04	—	400										
BC5-06	B250C5000	600										
BC5-08	—	800										
BC5-09	B380C5000	900										
BC5-10	—	1000										
BC5-12	—	1200										
BC5-15	—	1500										
BP3-005	KBPC1005	50						<b>3A</b> @ 40°C 50mm <sup>2</sup> x 1.5t COPPER 2A @ 40°C WITHOUT HEAT SINK	50A	1.0V@1A	10	
BP3-01	KBPC101	100										
BP3-02	KBPC102	200										
BP3-04	KBPC104	400										
BP3-06	KBPC106	600										
BP3-08	KBPC108	800										
BP3-10	KBPC110	1000										
BP6-005	KBPC6005	50	<b>6A</b> @ 40°C WITH 100mm <sup>2</sup> x 15t COPPER 3A@25°C WITHOUT HEAT SINK	150A	1.1V@3A	10						
BP6-01	KBPC601	100										
BP6-02	KBPC602	200										
BP6-04	KBPC604	400										
BP6-06	KBPC606	600										
BP6-08	KBPC608	800										
BP6-10	KBPC610	1000										
BP8-005	KBPC8005	50						<b>8A</b> @ 45°C WITH 150mm <sup>2</sup> x 15t COPPER 3A @ 40°C WITHOUT HEAT SINK	150A	1.1V@4A	10	
BP8-01	KBPC801	100										
BP8-02	KBPC802	200										
BP8-04	KBPC804	400										
BP8-06	KBPC806	600										
BP8-08	KBPC808	800										
BP8-10	KBPC810	1000										
BP10-005	KBPC10005	50	<b>10A</b> @ 40°C WITH 100mm <sup>2</sup> x 15t COPPER 4A@40°C WITHOUT HEAT SINK	200A	1.1V@5A	10						
BP10-01	KBPC1001	100										
BP10-02	KBPC1002	200										
BP10-04	KBPC1004	400										
BP10-06	KBPC1006	600										
BP10-08	KBPC1008	800										
BP10-10	KBPC1010	1000										
BP15-005	KBPC15005	50						<b>15A</b> @40°C WITH 200mm <sup>2</sup> x 1.5t COPPER 4A @ 40°C WITHOUT HEATSINK	300A	1.1V@7.5A	10	
BP15-01	KBPC1501	100										
BP15-02	KBPC1502	200										
BP15-04	KBPC1504	400										
BP15-06	KBPC1506	600										
BP15-08	KBPC1508	800										
BP15-10	KBPC1510	1000										
BP25-005	KBPC25005	50	<b>25A</b> @40°C WITH 300mm <sup>2</sup> x 1.5mm COPPER 5A @ 40°C WITHOUT HEAT SINK	300A	1.1V @ 12.5A	10						
BP25-01	KBPC2501	100										
BP25-02	KBPC2502	200										
BP25-04	KBPC2504	400										
BP25-06	KBPC2506	600										
BP25-08	KBPC2508	800										
BP25-10	KBPC2510	1000										
BP35-005	KBPC35005	50						<b>35A</b> @40°C WITH 400mm <sup>2</sup> x 1.5mm COPPER 5A @ 40°C WITHOUT HEAT SINK	400A	1.1V @ 17.5A	10	
BP35-01	KBPC3501	100										
BP35-02	KBPC3502	200										
BP35-04	KBPC3504	400										
BP35-06	KBPC3506	600										
BP35-08	KBPC3508	800										
BP35-10	KBPC3510	1000										