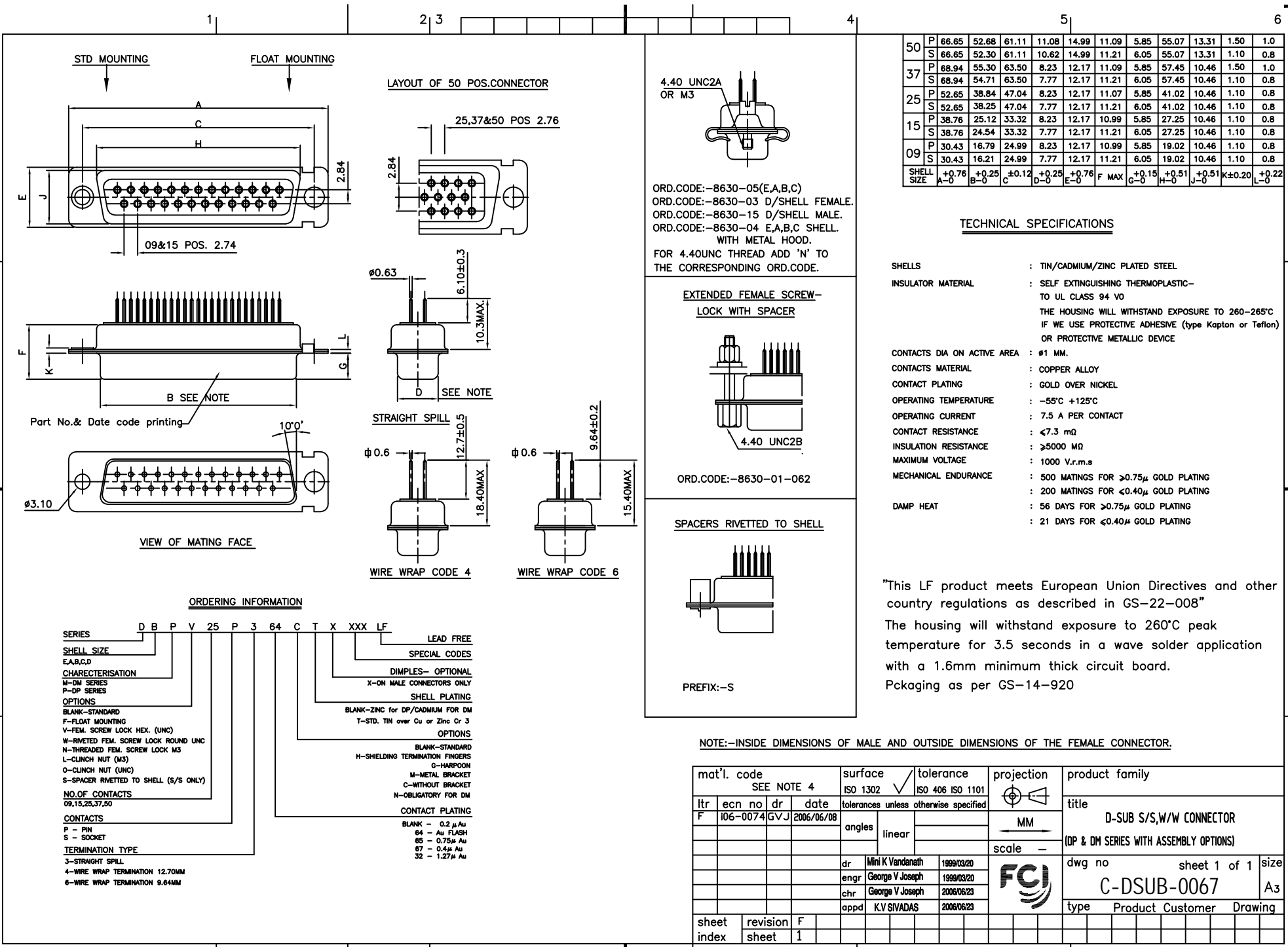




FCIconnect.com

Copyright FCI



50	P	66.65	52.68	61.11	11.08	14.99	11.09	5.85	55.07	13.31	1.50	1.0											
	S	66.85	52.30	61.11	10.62	14.99	11.21	6.05	55.07	13.31	1.10	0.8											
37	P	68.94	55.30	63.50	8.23	12.17	11.09	5.85	57.45	10.46	1.50	1.0											
	S	68.94	54.71	63.50	7.77	12.17	11.21	6.05	57.45	10.46	1.10	0.8											
25	P	52.65	38.84	47.04	8.23	12.17	11.07	5.85	41.02	10.46	1.10	0.8											
	S	52.65	38.25	47.04	7.77	12.17	11.21	6.05	41.02	10.46	1.10	0.8											
15	P	38.76	25.12	33.32	8.23	12.17	10.99	5.85	27.25	10.46	1.10	0.8											
	S	38.76	24.54	33.32	7.77	12.17	11.21	6.05	27.25	10.46	1.10	0.8											
09	P	30.43	16.79	24.99	8.23	12.17	10.99	5.85	19.02	10.46	1.10	0.8											
	S	30.43	16.21	24.99	7.77	12.17	11.21	6.05	19.02	10.46	1.10	0.8											
SHELL SIZE		A-0	+0.76	B-0	+0.25	C	±0.12	D-0	+0.25	E-0	+0.76	F	MAX	G-0	+0.15	H-0	+0.51	J-0	+0.51	K	±0.20	L-0	+0.22

TECHNICAL SPECIFICATIONS

- SHELLS : TIN/CADMIUM/ZINC PLATED STEEL
- INSULATOR MATERIAL : SELF EXTINGUISHING THERMOPLASTIC- TO UL CLASS 94 VO
- THE HOUSING WILL WITHSTAND EXPOSURE TO 260-265°C IF WE USE PROTECTIVE ADHESIVE (type Kapton or Teflon) OR PROTECTIVE METALLIC DEVICE
- CONTACTS DIA ON ACTIVE AREA : Ø1 MM.
- CONTACTS MATERIAL : COPPER ALLOY
- CONTACT PLATING : GOLD OVER NICKEL
- OPERATING TEMPERATURE : -55°C +125°C
- OPERATING CURRENT : 7.5 A PER CONTACT
- CONTACT RESISTANCE : <7.3 mΩ
- INSULATION RESISTANCE : >5000 MΩ
- MAXIMUM VOLTAGE : 1000 V.r.m.s
- MECHANICAL ENDURANCE : 500 MATINGS FOR >0.75µ GOLD PLATING
200 MATINGS FOR <0.40µ GOLD PLATING
- DAMP HEAT : 56 DAYS FOR >0.75µ GOLD PLATING
21 DAYS FOR <0.40µ GOLD PLATING

"This LF product meets European Union Directives and other country regulations as described in GS-22-008"

The housing will withstand exposure to 260°C peak temperature for 3.5 seconds in a wave solder application with a 1.6mm minimum thick circuit board.

Pckaging as per GS-14-920

ORDERING INFORMATION

SERIES	D	B	P	V	25	P	3	64	C	T	X	XXX	LF	LEAD FREE
SHELL SIZE	SPECIAL CODES													
CHARACTERISATION	DIMPLES- OPTIONAL													
M-DM SERIES	X-ON MALE CONNECTORS ONLY													
P-DP SERIES	SHELL PLATING													
OPTIONS	BLANK-ZINC FOR DP/CADMIUM FOR DM													
BLANK-STANDARD	T-STD. TIN over Cu or Zinc Cr 3													
F-FLOAT MOUNTING	OPTIONS													
V-FEM. SCREW LOCK HEX. (UNC)	BLANK-STANDARD													
W-RIVETED FEM. SCREW LOCK ROUND UNC	H-SHIELDING TERMINATION FINGERS													
H-THREADED FEM. SCREW LOCK UNC	G-HARPOON													
L-CLINCH NUT (M3)	M-METAL BRACKET													
O-CLINCH NUT (UNC)	S-WITHOUT BRACKET													
S-SPACER RIVETED TO SHELL (S/S ONLY)	N-OBLIGATORY FOR DM													
NO.OF CONTACTS	CONTACT PLATING													
09,15,25,37,50	BLANK - 0.2 µ Au													
CONTACTS	64 - Au FLASH													
P - PIN	65 - 0.75µ Au													
S - SOCKET	67 - 0.4µ Au													
TERMINATION TYPE	32 - 1.27µ Au													
3-STRAIGHT SPILL														
4-WIRE WRAP TERMINATION 12.70MM														
6-WIRE WRAP TERMINATION 9.64MM														

NOTE: -INSIDE DIMENSIONS OF MALE AND OUTSIDE DIMENSIONS OF THE FEMALE CONNECTOR.

mat'l. code		surface		tolerance		projection		product family	
SEE NOTE 4		ISO 1302		ISO 406 ISO 1101				title	
ltr	ecn no	dr	date	tolerances unless otherwise specified				D-SUB S/S,W/W CONNECTOR	
F	106-0074	GVJ	2006/06/08	angles	linear	MM		(DP & DM SERIES WITH ASSEMBLY OPTIONS)	
						scale -		dwg no	
				dr		1999/03/20		sheet 1 of 1	
				engr		1999/03/20		size	
				chr		2006/06/23		A3	
				appd		2006/06/23		type	
sheet index		revision		F				Product Customer Drawing	
		sheet		1					