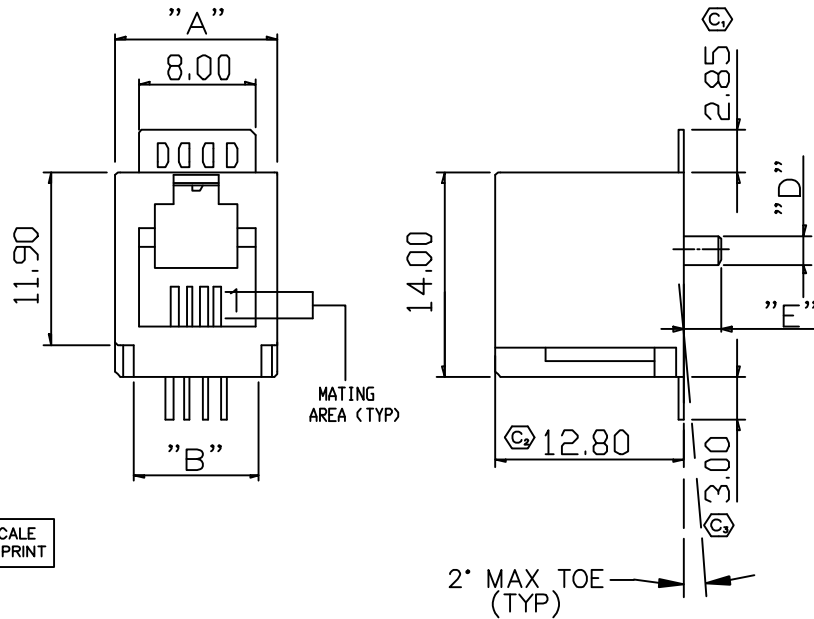
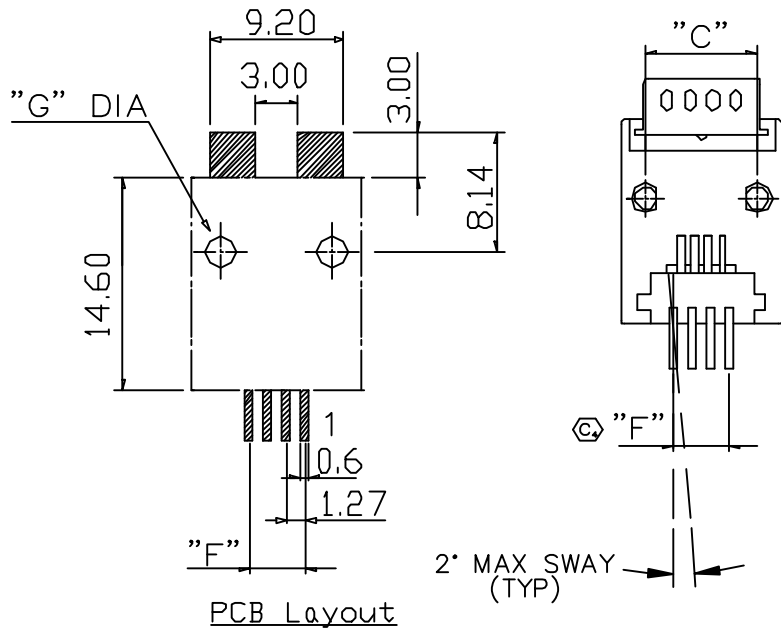


REVISION C



DO NOT SCALE FROM THIS PRINT



PCB Layout

MODS-H-XPXC-X-SM-X-X-X-XX

TYPE
-H

POSITIONS/CONTACTS
-4P4C: 4 Pos/4 Con
-6P4C: 6 Pos/4 Con (SEE NOTE 3)
-6P6C: 6 Pos/6 Con
-8P8C: 8 Pos/8 Con

TAPE & REEL
-TR

KAPTON PAD
-K

EI OPTION
-R: RoHS COMPLIANT

ALIGNMENT PIN
-A

SURFACE MOUNT

PLATING (C)
-L: .000015" Gold
-S: .000030" Gold
-U: .000050" Gold
(SEE NOTE 3)

XPXC	"A"	"B"	"C"	"D"	"E"	"F"	"G"
4P4C -A	11.10	8.70	7.62	2.00	2.60	3.81	2.20
4P4C	11.10	8.70	N/A	N/A	N/A	3.81	N/A
6P4C -A	13.20	10.60	10.16	2.00	2.60	6.35	2.20
6P4C	13.20	10.60	N/A	N/A	N/A	6.35	N/A
6P6C -A	13.20	10.60	10.16	2.00	2.60	6.35	2.20
6P6C	13.20	10.60	N/A	N/A	N/A	6.35	N/A
8P8C -A	15.50	13.20	11.43	2.00	2.60	8.89	2.20
8P8C	15.50	13.20	N/A	N/A	N/A	8.89	N/A

NOTES:

1. (C) REPRESENTS CRITICAL DIMENSION.
2. CRITICAL DIMENSIONS ON PCB LAYOUT APPLY TO THE ASSEMBLY
3. PLATING APPLIES TO MATING AREA, COLD FLASH ON TAILS, ALL PLATING OVER Ni UNDERCOAT
4. PIN NUMBERS REFLECT PIN CALLOUT ON THE CONNECTOR, NOT USER WIRING ASSIGNMENT.
5. REMOVE PINS 1 & 6 FOR 6P4C.

UNLESS OTHERWISE SPECIFIED, DIMENSIONS ARE IN MM. TOLERANCES ARE:
DECIMALS .XX: ±.25
.XXX: ±.13
.XXXX: ±.05

PROPRIETARY NOTE
THIS DOCUMENT CONTAINS INFORMATION CONFIDENTIAL AND PROPRIETARY TO SAMTEC, INC. AND SHALL NOT BE REPRODUCED OR TRANSFERRED TO OTHER DOCUMENTS OR DISCLOSED TO OTHERS OR USED FOR ANY PURPOSE OTHER THAN THAT FOR WHICH IT WAS OBTAINED WITHOUT THE EXPRESSED WRITTEN CONSENT OF SAMTEC, INC.

DO NOT SCALE DRAWING
INSULATOR: Nylon 46
CONTACT: .35mm Phos Bronze

SHEET SCALE: 1:2

MAX FLASH ALLOWED: .051
MAX GATE VESTIGE: .051
F:\DWG\EXISPROD\ASSEMBLY\10\MODJACKS\MODS\

samtec
520 PARK EAST BLVD. NEW ALBANY, IN 47150
(812) 944-6733 P.O. BOX 1147 TWX: 810-540-4085

CODE: 55322

DESCRIPTION:
RJ11 Top Entry SMT PCB Jack

DWG. NO.
MODS-H-XPXC-X-SM-X-X-X-XX

BY: J. Riley 04/7/04 SHEET 1 OF 1