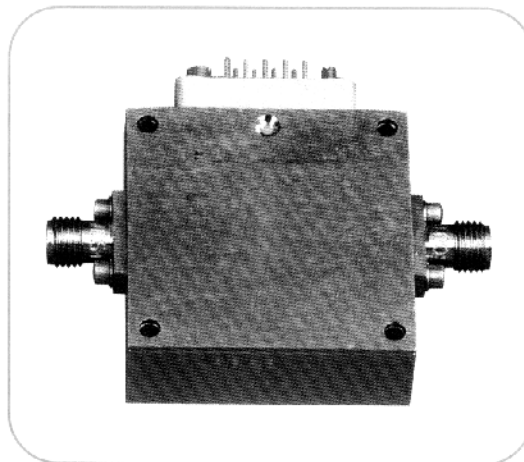


## DIGITAL PIN ATTENUATORS

MODEL: DPAT-025075060-08

### FEATURES

- Frequency range ..... 2.5–7.5 GHz
- Insertion loss ..... 2.5 dB maximum
- In/out VSWR ..... 2.2:1 typical
- Attenuation ..... 0.25 dB minimum
- Mean attenuation level (dB)     10   20   30   40  
Flatness ( $\pm$ dB)                   0.5   1.4   3.0   3.5
- Attenuation accuracy ..... 0–30 dB:  $\pm 0.5$  dB  
  30–50 dB:  $\pm 0.5$  dB  
  50–60 dB:  $\pm 1.5$  dB
- Number of control bits ..... 8
- DC power ..... +12 V @ 120 mA maximum  
  -12 V @ 50 mA maximum
- Size ..... 34 x 34 x 12.7 mm  
  (excludes connectors)



### ORDERING INFORMATION

Please contact factory.

### ORDERING INFORMATION FOR RF CONNECTORS

Unless otherwise specified all units will be shipped with field replaceable SMA female connectors on the input and outputs. If male connectors are desired on any ports, please specify on the purchase order.

# DIGITAL PIN ATTENUATORS (CONT.)

## MODEL: DAT-01200140

### FEATURES

- Frequency range ..... 1.2–1.4 GHz
- Insertion loss ..... 5 dB maximum
- In/out VSWR at any attenuation... 1.5:1 maximum
- Attenuation ..... 82 dB maximum
- Number of control bits ..... 8  
 bit 0 = 50 dB OFF/bit 1 = 50 dB ON  
 8 bits over 32 dB range, LSB = 0.125 dB
- Attenuation accuracy/flatness .....  $\pm 0.9$  dB
- Switching speed ..... 200 ns maximum
- Phase variation ..... 0 to 20 dB  $\pm 8^\circ$  maximum  
 @  $P_{IN}$  up to 20 dBm ..... 20 to 32 dB  $\pm 12^\circ$  maximum
- RF input power, working ..... +10 dBm maximum
- Power handling capability ..... +20 dBm minimum



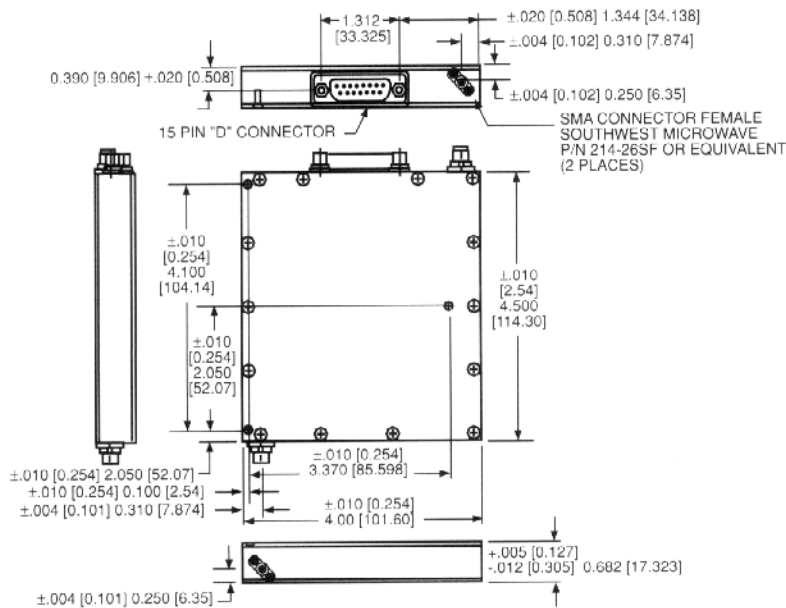
### ORDERING INFORMATION

Please contact factory.

### ORDERING INFORMATION FOR RF CONNECTORS

Unless otherwise specified all units will be shipped with field replaceable SMA female connectors on the input and outputs. If male connectors are desired on any ports, please specify on the purchase order.

## OUTLINE DRAWING



### POWER CONNECTOR PIN ASSIGNMENTS PIN DESIGNATION

PIN	DESIGNATION
1	0.125 dB
2	0.250 dB
3	0.5 dB
4	1 dB
5	2 dB
6	4 dB
7	8 dB
8	16 dB
9	50 dB
10	N.C.
11	N.C.
12	N.C.
13	+15 V
14	-15 V
15	GND

### GENERAL NOTES:

1. Dimensions shown in brackets [ ] are in millimeters.
2. Unless specified, all connectors are type SMA female field replaceable.
3. Tolerance as follows:  
 .xx =  $\pm 0.01$  [ .xx =  $\pm 0.25$  ]  
 .xxx =  $\pm 0.005$  [ .xxx =  $\pm 0.13$  ]