

SPECIFICATIONS

Mechanical

Mating Force: 4.5Pounds max.
Unmating Force: 4.5Pounds max.
Durability: 1000 Cycles

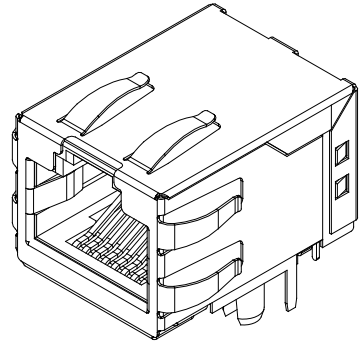
Electrical

Current Rating: 1.5A max.
Dielectric Withstanding Voltage: 1500VAC

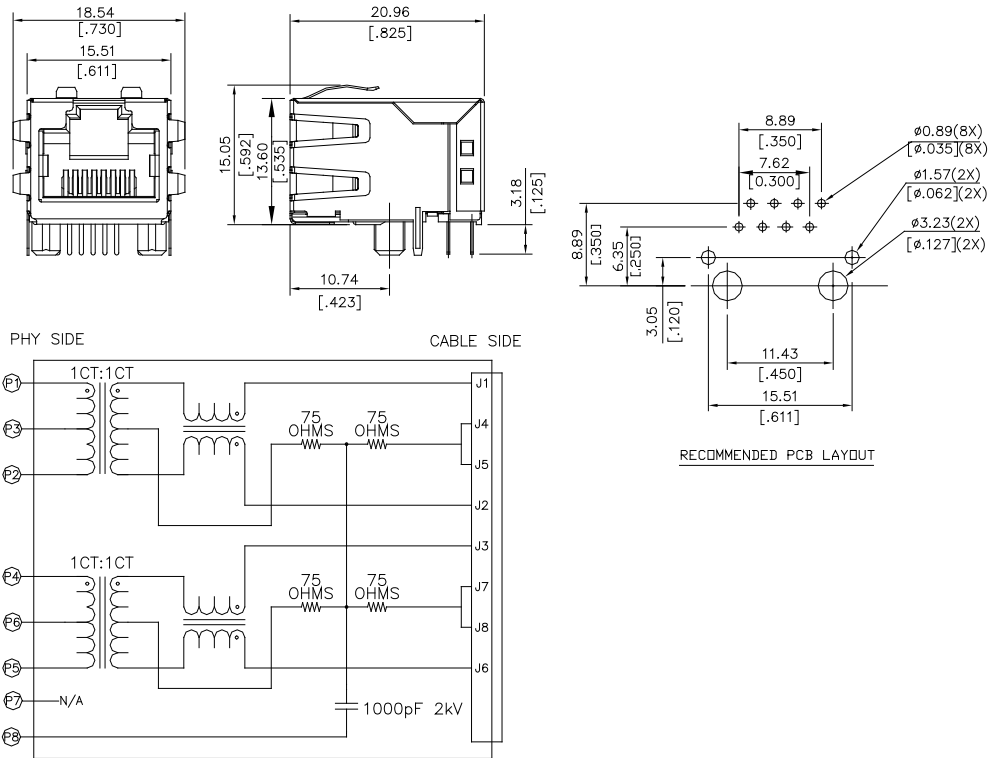
Physical

Housing: Thermoplastic, UL94V-0 rated in Black Color
Contact: Phosphor Bronze
Shell: Brass Alloy
Operating Temperature: -40°C to +85°C

JFM Series
RJ45 1X1
RA, T/U, T/H Type
1.27mm [.050"] Pitch,
10/100 Base-T



DRAWING



ORDERING INFORMATION

PRODUCT NO.: JFM 2 4 3 1 0 - 01PD - 4 F

SERIES PREFIX: JFM = RJ WITH MAGNETIC
 PROTOCOL TYPE: 2 = 10/100 BASE T
 CORE COUNT: 4 = 4-CORE
 CONFIGURATION: 3 = 1X1 T/U
 F = LEAD FREE
 PACKAGE TYPE: 4 = SOFT TRAY
 EXTENSION CODE
 LEDs: 0 = NONE
 PCB ATTACHMENT MI: 1 = T/H