

SPECIFICATIONS

Mechanical

Mating Force: 5pound max(RJ45)
Unmating Force: 10pound max(RJ45)
Durability: 1000 Cycles(RJ45)

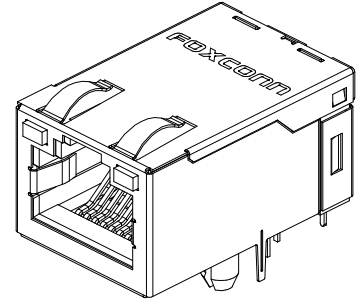
**JFM Series SINGLE-PORT
 10/100 & Gbe**

Electrical

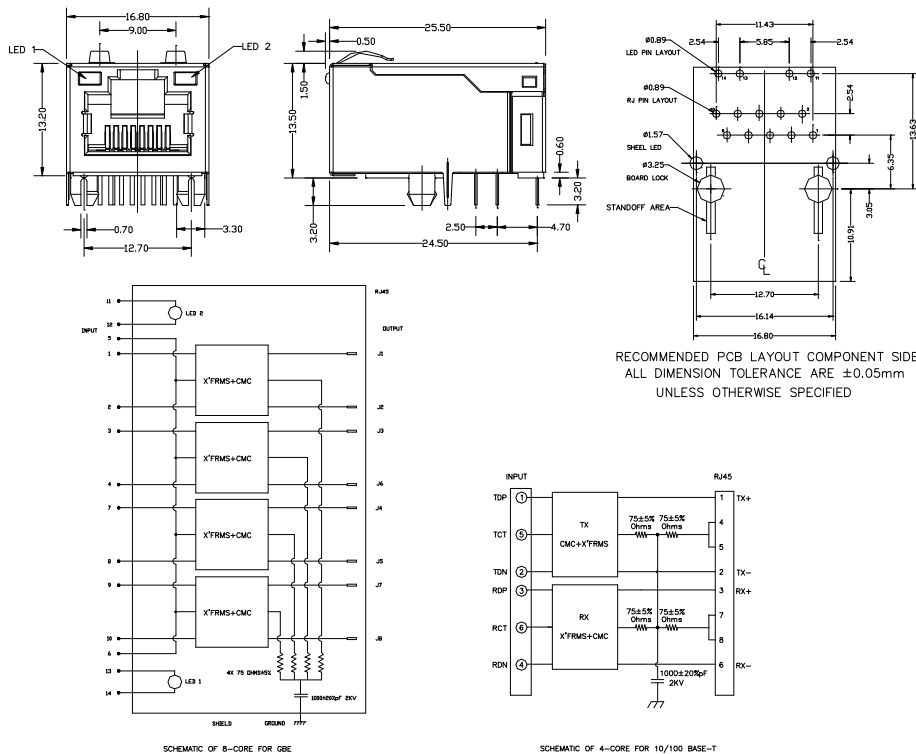
Current Rating: 1.5A max(RJ45)
Contact Resistance: 30mW max.
Dielectric Withstanding Voltage: 125V(RJ45).
Insulation Resistance: 1000MW min.

Physical

Housing: Thermoplastic, UL 94V-0 rated Black Color
Contact: Phosphor Bronze
Shell: BRASS
Operating Temperature: 0 to +70



DRAWING



ORDERING INFORMATION

JFM * * 1 1 * — 2101 — 4 *

JFM Series RJ-45 w/magnetic integrated
 Ethernet Transmission Rate 2:10/100 Base-T 3:Gigabit

* Number of Core
 1:12cores(GbE)
 4:4cores(10/100)
 5:5cores(10/100)
 8:8cores(GbE)

* LED Options (see right side table)

* Extension code was based on system platform and PHY used, please contact Foxconn sales representative for the code.

* Extension Code*
 2101 — 4

* Pb Content Lever
 F:Pb-Free
 N:Non-Pb-Free

NO.	LED 2	LED 1
1	GREEN 12 — 11	YELLOW 14 — 13
2	GREEN 12 — 11	GREEN 14 — 13
3	YELLOW 12 — 11	GREEN 14 — 13
E	GREEN 12 — 11	GREEN 14 — 13 YELLOW
F	GREEN 12 — 11 ORANGE	GREEN 14 — 13