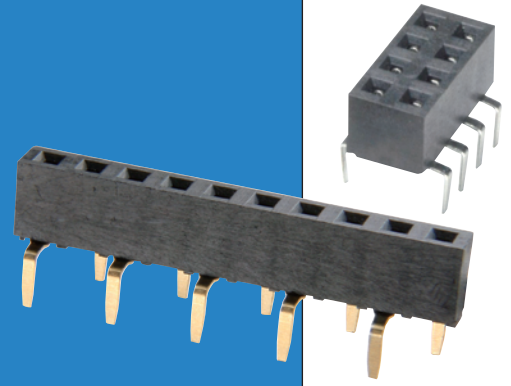


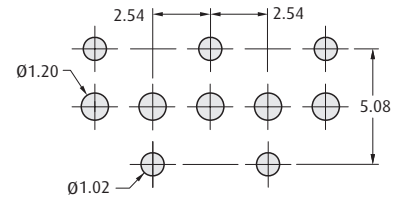
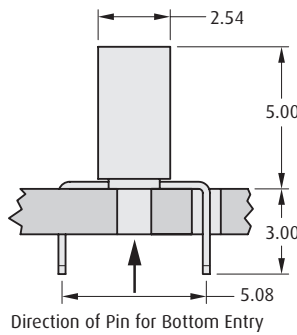
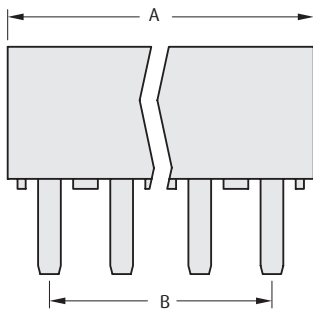
M20 Connectors

Female Dual Entry PC Tail

- ❖ Suitable for use with M20-997 bottom entry pin headers shown on page 133.
- ❖ Can be used as either top or bottom entry connectors.



SINGLE ROW

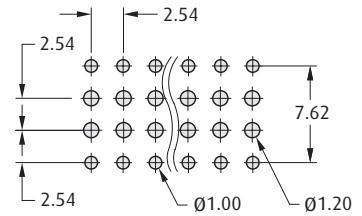
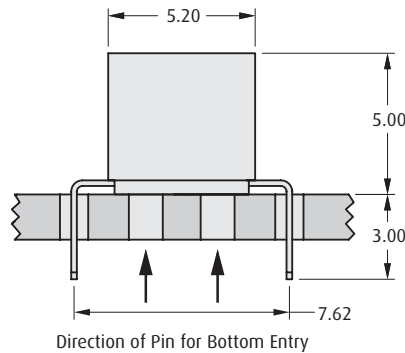
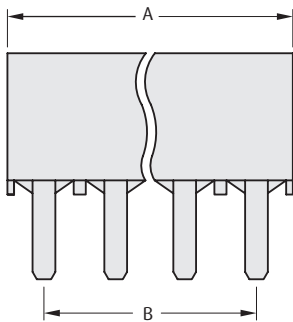


Recommended PC Board Pattern

CALCULATION

A	$(2.54 \times \text{No. of ways per row}) + 0.5$
B	$2.54 \times (\text{No. of ways per row} - 1)$

DOUBLE ROW



Recommended PC Board Pattern

HOW TO ORDER

M20 - 78 X XX XX

SERIES CODE

TYPE

4	Single Row
5	Double Row

FINISH

42	Gold + Tin	
46	Tin	

NO. OF WAYS PER ROW

02 to 40

All dimensions in mm.

www.harwin.com

2.54mm (.100") PITCH

