



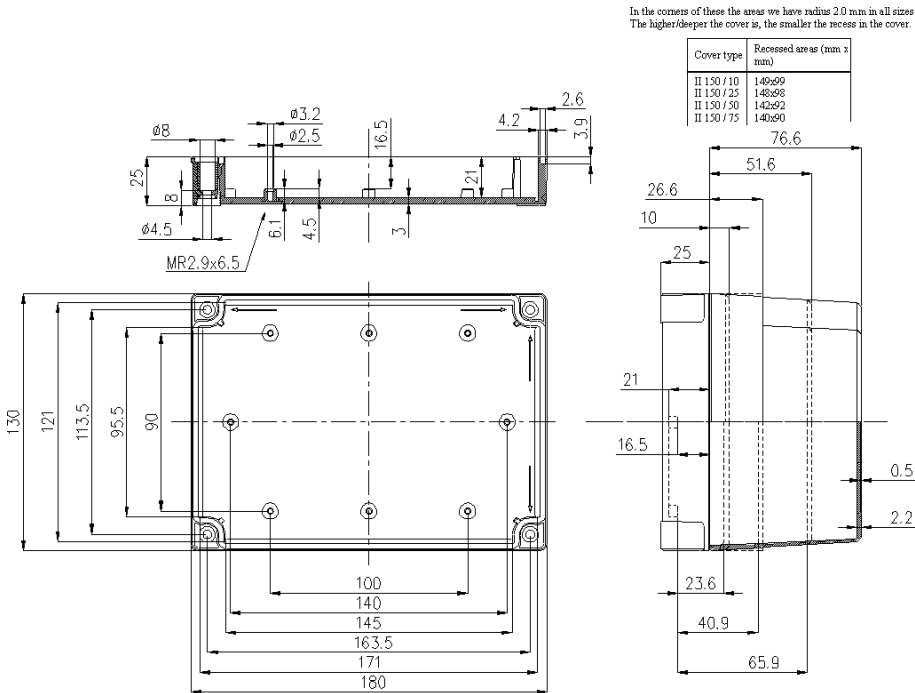
This is a sample photo.

| | | | |
|---------------------|-----------------|---------------|--|
| Order symbol | PC 150/50 LG | | |
| EI. number | EAN-code | 6418074022141 | |
| Sweden | | | |
| Denmark | | | |
| Finland | 3420345 | | |

Including
Enclosure cover with cover screws, body with mounting screws and gasket.

Product Properties
USA: UL Type 1, 4, 4X, 6
EURO: IP 66/67 (EN 60529); IK 08 (EN 50102)

MNX PC



Technical Information of Product Group

| | | | |
|-------------------|----------------------|---------------------------|--------------------|
| Standard colour: | RAL 7035 | Temp. range-in cont. use: | Max. +80 °C |
| Flame resistance: | UL94-5V (UL 746 C 5) | Temp. range-of material: | - 40 °C - + 120 °C |

Accessories

| | |
|-------------------------|--------------|
| Sealing bushing | DP 14553 |
| Condensation water plug | MB 12189 |
| Mounting screw | MR ZN2.9x6.5 |
| Ventilation device | MB 10631 |
| Inspection window | L 08 |
| Cover screw | SS 14551H |
| Mounting plate | MIV 150 |
| Swing door kit | HFP 180 |
| DIN-Rail | MIV 15 |
| DIN-Rail | MIN 10 |
| DIN-Rail | MIN 15 |
| DIN-Rail | MIV 10 |
| Front plate | FP A 150/180 |
| Hinge | TH A |