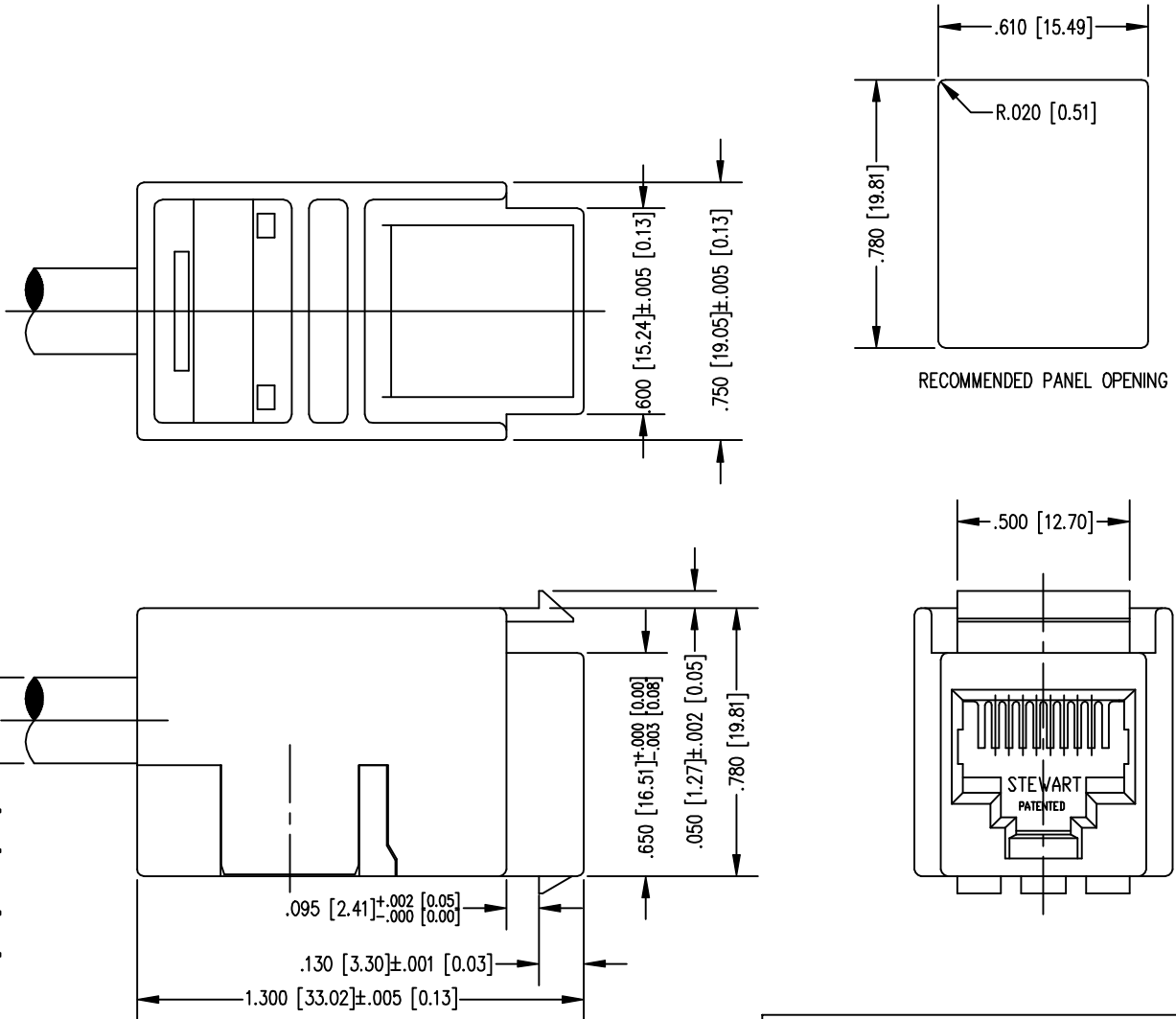


REV.	REVISION CHANGES
X0	AS DRAWN

PART NO. SS-800810SB-SP30-032-250 (30uIN GOLD)
 PART NO. SS-800810SB-SP50-032-250 (50uIN GOLD)

CABLE READY JACK ASSEMBLY

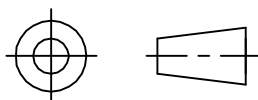
SB- INDICATES SHORT BODY, 1.300[33.02] LENGTH
 032- .032[0.81]/.037 [0.98] WIRE INSULATION DIA.
 250- O.D. OF CABLE



FOR REFERENCE ONLY

NOTE:
 - TOLERANCES COMPLY WITH F.C.C. DIMENSION REQUIREMENTS.
 ALL OTHERS $\pm .003 [0.08]$ UNLESS OTHERWISE SPECIFIED.

THIRD ANGLE PROJECTION



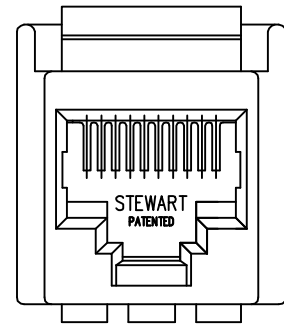
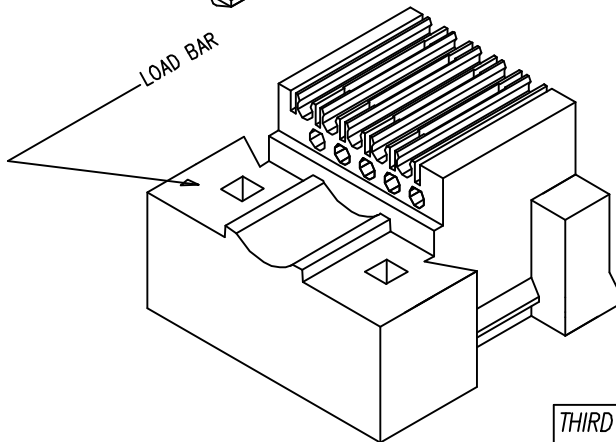
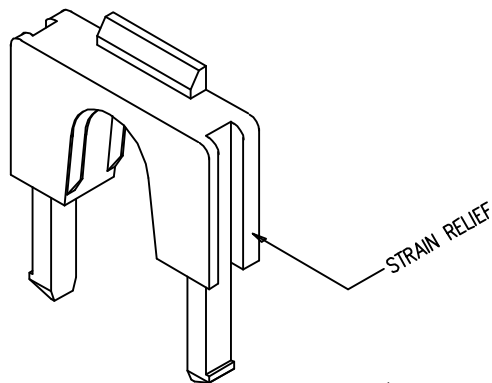
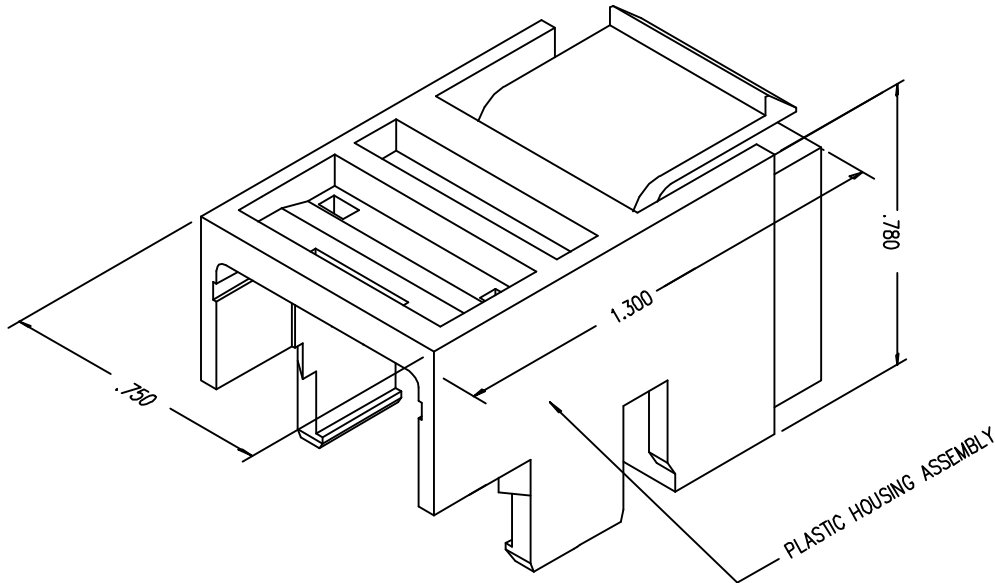
THIS DRAWING AND THE SUBJECT MATTER SHOWN THEREON ARE CONFIDENTIAL AND THE PROPRIETARY PROPERTY OF STEWART CONNECTOR SYSTEMS ("SCS") AND SHALL NOT BE REPRODUCED, COPIED OR USED IN ANY MANNER WITHOUT PRIOR WRITTEN CONSENT OF "SCS". THE SUBJECT MATTER MAY BE PATENTED OR A PATENT MAY BE PENDING. © SCS

Stewart Connector

Stewart Connector Systems, Inc.
 Insilco Technologies Group
 11118 Susquehanna Trail South
 Glen Rock, PA 17327-9199
 (717) 235-7512 Fax: (717) 235-7954

REV.	REVISION CHANGES
X0	AS DRAWN

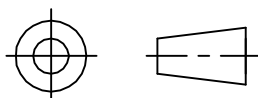
PART NO. SS-800810SB-SP30-032-250 (30uIN GOLD)
 PART NO. SS-800810SB-SP50-032-250 (50uIN GOLD)



FRONT VIEW OF HOUSING

FOR REFERENCE ONLY

THIRD ANGLE PROJECTION



THIS DRAWING AND THE SUBJECT MATTER SHOWN THEREON ARE CONFIDENTIAL AND THE PROPRIETARY PROPERTY OF STEWART CONNECTOR SYSTEMS ("SCS") AND SHALL NOT BE REPRODUCED, COPIED OR USED IN ANY MANNER WITHOUT PRIOR WRITTEN CONSENT OF "SCS". THE SUBJECT MATTER MAY BE PATENTED OR A PATENT MAY BE PENDING. © SCS