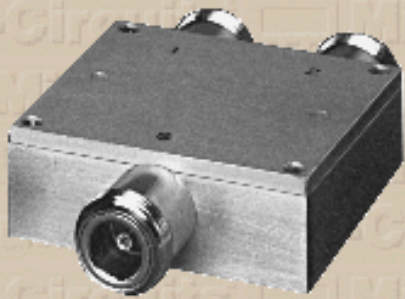


# Power Splitter



## Notes:

- Non-catalog model. Please consult factory for price and delivery.
- General Quality Control Procedures and Environmental Specifications are given in [Mini-Circuits Guarantees Quality](#). Hi-Rel, MIL description are given in [Hi-Rel and MIL](#).
- Prices and Specifications subjects to change without notice.

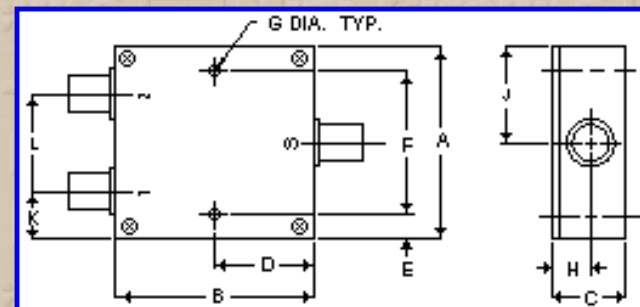
## ZAPD-ED9826/1 2 Way-0°

Frequency MHz	Isolation, dB			Insertion Loss, dB Above 3.0dB			Phase Unbalance Degrees			Amplitude Unbalance, dB		
	L	M	U	L	M	U	L	M	U	L	M	U
$f_L - f_U$	Typ. Min.	Typ. Min.	Typ. Min.	Typ. Max.	Typ. Max.	Typ. Max.	Max. Max.	Max. Max.	Max. Max.	Max. Max.	Max. Max.	Max. Max.
1400-4400												

L=low range( $f_L$  to  $10f_L$ ) M=mid range( $10f_L$  to  $f_U/2$ ) U=upper range( $f_U/2$  to  $f_U$ )

## Pin Connections

Port	Sum Port	Port 1	Port 2
as	S	1	2



Case Style - F14 (inch,mm) weight: 170 grams.

A	B	C	D	E	F	G	H	J
2.00	2.00	.75	1.00	.25	1.500	.125	.39	1.00
50.800	50.800	19.050	25.400	6.350	38.100	3.175	9.906	25.400
K	L	M	N	P	Q	R	S	T
.50	1.00							
12.700	25.400							

Tolerance: .x ± .1 .xx ± .03 .xxx ± .015 inch.

## Material and Finish:

Case material: aluminum alloy. Finish: grey paint or yellow iridite.

## Marking:

For port markings 1, 2, and 3 see specification data sheet.

## Connectors:

Connectors: please specify, unless otherwise noted; BNC is standard, TNC, SMA and Type N, consult factory. (ZAPD -4 units not available with BNC).

FREQ (MHz)	Insertion Loss (dB)		Amplitude Unbalance (dB)	Isolation (dB) 1-2	Phase Unbalance (Degrees)	FREQ (MHz)	VSWR S	VSWR 1	VSWR 2
	S-1	S-2							
1400.00	3.42	3.44	0.010	15.84	0.25	1400.00	1.50	1.05	1.06
1450.00	3.40	3.42	0.020	16.61	0.19	1450.00	1.47	1.04	1.05
1500.00	3.37	3.39	0.020	17.37	0.29	1500.00	1.45	1.04	1.05
1550.00	3.35	3.37	0.020	18.24	0.22	1550.00	1.43	1.03	1.04
1600.00	3.32	3.34	0.020	19.12	0.24	1600.00	1.40	1.04	1.04
1650.00	3.32	3.34	0.020	20.11	0.24	1650.00	1.38	1.04	1.04
1700.00	3.31	3.33	0.020	21.12	0.26	1700.00	1.36	1.04	1.03
1750.00	3.30	3.33	0.030	22.18	0.20	1750.00	1.34	1.04	1.04
1800.00	3.30	3.32	0.030	23.28	0.26	1800.00	1.32	1.04	1.03
2000.00	3.34	3.36	0.020	27.46	0.27	2000.00	1.27	1.06	1.04
2200.00	3.43	3.46	0.020	29.10	0.25	2200.00	1.28	1.11	1.09
2400.00	3.51	3.52	0.010	29.95	0.39	2400.00	1.31	1.16	1.13
2410.00	3.51	3.52	0.010	30.00	0.28	2410.00	1.31	1.16	1.14
2420.00	3.51	3.53	0.020	30.13	0.33	2420.00	1.32	1.17	1.14
2430.00	3.51	3.53	0.020	30.25	0.26	2430.00	1.32	1.17	1.14
2440.00	3.51	3.53	0.010	30.38	0.25	2440.00	1.32	1.17	1.14
2450.00	3.53	3.54	0.010	30.51	0.25	2450.00	1.32	1.17	1.14
2460.00	3.53	3.54	0.010	30.67	0.22	2460.00	1.32	1.17	1.14
2470.00	3.53	3.54	0.010	30.80	0.23	2470.00	1.32	1.17	1.14
2480.00	3.53	3.53	0.000	30.96	0.31	2480.00	1.32	1.17	1.14
2490.00	3.53	3.54	0.010	31.09	0.26	2490.00	1.33	1.17	1.14
2500.00	3.54	3.55	0.020	31.21	0.32	2500.00	1.33	1.17	1.14
2600.00	3.55	3.55	0.000	33.39	0.36	2600.00	1.34	1.17	1.13
2700.00	3.54	3.55	0.010	36.80	0.46	2700.00	1.34	1.16	1.13
2800.00	3.51	3.53	0.010	42.22	0.41	2800.00	1.31	1.15	1.12
2900.00	3.50	3.50	0.010	47.19	0.45	2900.00	1.26	1.14	1.11
3000.00	3.47	3.49	0.020	41.29	0.43	3000.00	1.21	1.14	1.11
3100.00	3.44	3.46	0.020	37.10	0.44	3100.00	1.18	1.15	1.13
3200.00	3.41	3.44	0.030	35.02	0.47	3200.00	1.22	1.19	1.18

3300.00	3.39	3.43	0.040	34.30	0.46	3300.00	1.28	1.22	1.22
3400.00	3.40	3.44	0.030	34.81	0.45	3400.00	1.36	1.21	1.22
3500.00	3.43	3.46	0.040	36.29	0.51	3500.00	1.49	1.24	1.24
3600.00	3.50	3.55	0.050	37.38	0.40	3600.00	1.60	1.28	1.28
3700.00	3.62	3.67	0.050	35.03	0.44	3700.00	1.64	1.34	1.34
3800.00	3.71	3.75	0.050	31.33	0.37	3800.00	1.57	1.43	1.42
3900.00	3.76	3.80	0.040	28.42	0.34	3900.00	1.61	1.58	1.55
4000.00	3.74	3.78	0.040	26.31	0.30	4000.00	1.75	1.84	1.80
4100.00	3.70	3.72	0.020	24.80	0.32	4100.00	1.74	1.85	1.78
4200.00	3.67	3.70	0.030	23.78	0.27	4200.00	1.69	1.70	1.61
4300.00	3.66	3.69	0.030	23.23	0.36	4300.00	1.74	1.58	1.48
4400.00	3.75	3.77	0.010	23.11	0.42	4400.00	1.84	1.47	1.36



**Mini-Circuits®**

INTERNET <http://www.minicircuits.com>

P.O. Box 350166, Brooklyn, New York 11235-0003 (718) 934-4500 Fax (718) 332-4661

Distribution Centers NORTH AMERICA 800-654-7949 • 417-335-5935 • Fax 417-335-5945 • EUROPE • 44-1252-832600 • Fax 44-1252-837010

ISO 9001 CERTIFIED

[Back](#)

# i2 Technologies US, Inc.

## HTML Pages converted to PDF Document

This document contains component information from the manufacturer's website which are not available in a revision controlled document from the manufacturer. To facilitate the addition of these parts into the Electronics Database, we are converting the HTML pages related to that part, from the manufacturer's website into Adobe PDF format. The contents of this document is based on the information provided on the manufacturer's website, therefore the information may have been changed by the manufacturer since this was created.

