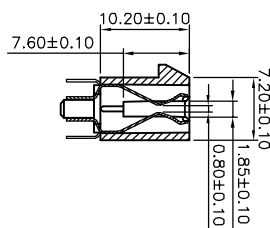
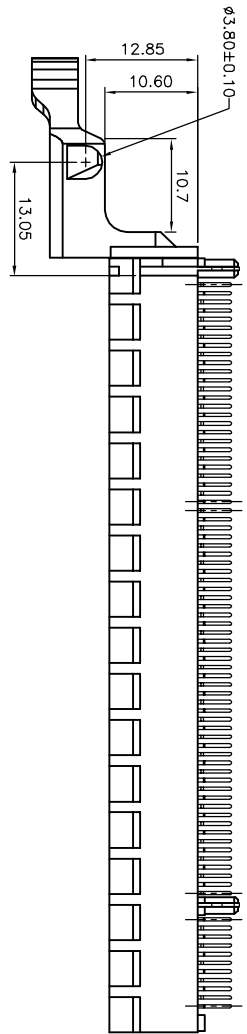
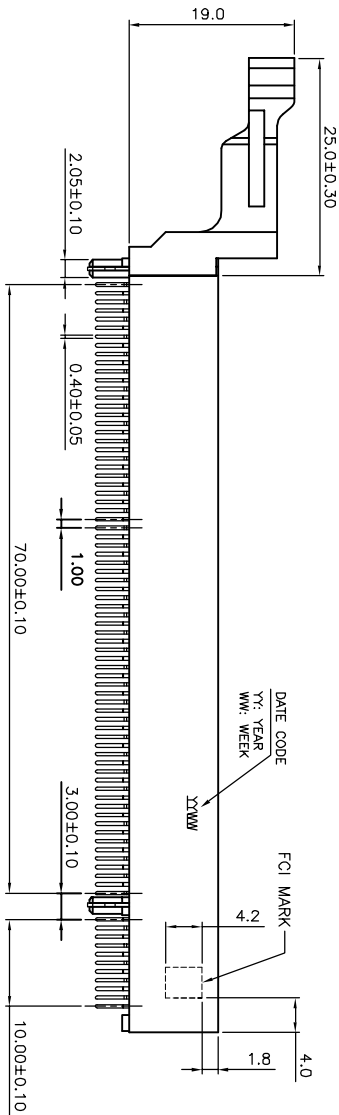
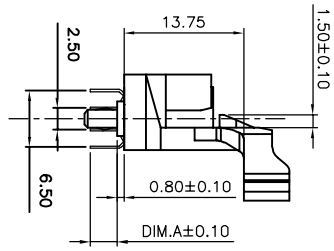


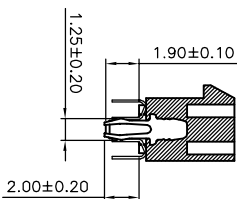


B

A



SEC A-A



SEC B-B

mat'l. code		tolerances unless otherwise specified		CUSTOMER COPY		FCI		www.fciconnect.com	
itr	ecn no	dr	dtc	linear	projection	title	product family	code	
A	T08-1032	JH	2/26/08	.XX ± 0.25 .XXX ± 0.10 0° ± 2°	MM	PCI-E INTEGRATED TYPE CARD EDGE ASSY	EDGE CARD	TWN	
					1:1			1 of	
sheet	revision	A	A	engr	chr	JASON HSU	2/26/08	10074375	1 of
index	sheet	1	2	chr	STERLING LIN	2/26/08			
				appr	Minerva Wang	2/26/08			

ACAD

1 | 2

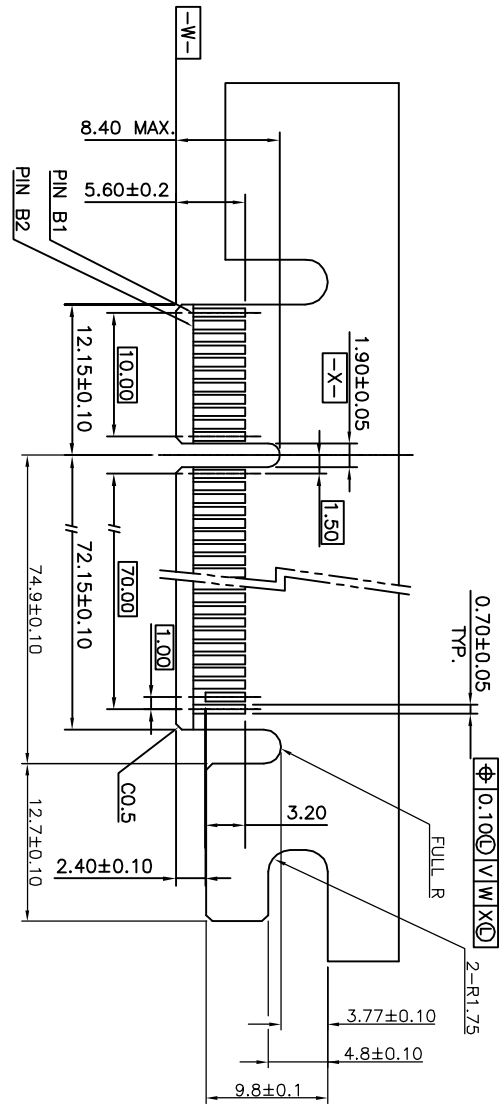
3

4

1 | 2

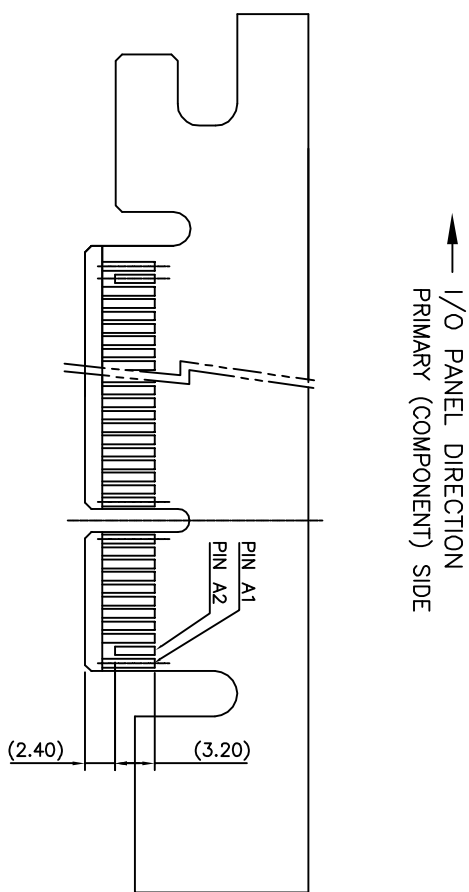
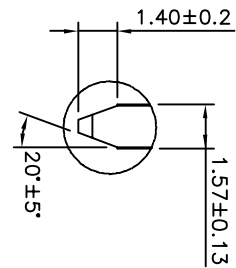
3

4



ADD-IN CARD EDGE-FINGER DIMENSIONS

SCALE 2:1



RECOMMENDED FOOTPRINT LAYOUT

1 | 2

ACAD

3

4

mat'l code		tolerances unless otherwise specified		CUSTOMER COPY		FCI		www.fciconnect.com	
itr	ecn no	dr	date	linear	projection	title		PCI-E INTEGRATED TYPE CARD EDGE ASS'Y	
A				.XX ± 0.25	MM	product family		EDGE CARD	
				.XXX ± 0.10		size dwg no		10074375	
				0° ± 2°		code		TWN	
						sheet		2 of	
						revision			
						sheet			
						index			
						cage code			



1 | 2

3

4

NOTES:  
1. MATERIAL:  
HOUSING: THERMOPLASTIC WITH GLASS FIBER, UL94V-0,  
LATCHES: THERMOPLASTIC WITH GLASS FIBER, UL94 HB,  
CONTACTS: COPPER ALLOY,  
BOARDLOCKS: COPPER ALLOY.

2. FINISH:  
CONTACTS: GOLD PLATING ON CONTACT AREA,  
100u" MIN. TIN/LEAD OR MATTE TIN (LEAD FREE OPTION) PLATING ON SOLDER TAILS,  
50u" MIN. NICKEL UNDERPLATING OVER ALL.

BOARDLOCKS: 100u" MATTE TIN PLATING ON SOLDER TAILS,  
50u" MIN. NICKEL UNDERPLATING OVER ALL.

3. WARNING: THE MAXIMUM ALLOWABLE ANGLE TO WITHDRAWAL THE DAUGHTER CARD FROM RETAINER BY 20 DEGREE.

4. DURABILITY: 50 CYCLES.

5. ROHS COMPATIBLE PRODUCT SPECIFICATIONS

a. PLATING: "LF" MEANS THE PRODUCT IS LEAD FREE, 2.5um min. MATTE PURE TIN OVER 1.27um MIN. NICKEL UNDERPLATE.

b. MANUFACTURING PROCESS COMPATIBILITY: THE HOUSING WILL WITHSTAND EXPOSURE TO 260C ±5C SOLDER BATH TEMPERATURE FOR 5 SECONDS IN A WAVE SOLDER APPLICATION WITH A 1.60MM THICK CIRCUIT BOARD.

PRODUCT NUMBER CODE

10074375 -X X X X X X LF

HOUSING COLOR OPTIONS  
1-BLACK FOR BASE & RM  
2-BLACK FOR BASE & WHITE FOR RM  
3-BLUE FOR BASE & RM

PEGS OPTIONS  
1-METAL & PLASTIC COMPOUND

TERMINAL PLATING OPTIONS  
0-50u" NI UNDERPLATE  
30u" AU CONTACT AREA  
100u" TIN TAIL AREA  
1-50u" NI UNDERPLATE  
15u" AU CONTACT AREA  
100u" TIN TAIL AREA  
2-50u" NI UNDERPLATE  
GOLD FLASH CONTACT AREA  
100u" TIN TAIL AREA

APPLICATIONS  
LF- LEAD FREE

PACKAGING OPTIONS  
T-TRAY PACKAGING

POS OPTIONS  
3-164

TAIL LENGTH OPTION (DIM A)  
1- 3.10MM  
2- 2.30MM

mat'l code	tolerances unless otherwise specified	CUSTOMER COPY	FCI	www.fciconnect.com
thr	.X ± 0.38	projection	PCI-E INTEGRATED TYPE	code
ecr no	.XX ± 0.25	MM	CARD EDGE ASS'Y	TWN
dr	.XXX ± 0.10	MM	EDGE CARD	3 of
linear	0° ± 2°	scd	10074375	
angles		size		
dr	JASON HSU 2/26/08	product family		
engr	JASON HSU 2/26/08	product family		
chr	STERLING LIN 2/26/08	product family		
appd	Minerva Wang 2/26/08	product family		
sheet		revision		
index		sheet		

ACAD

1 | 2

3

4