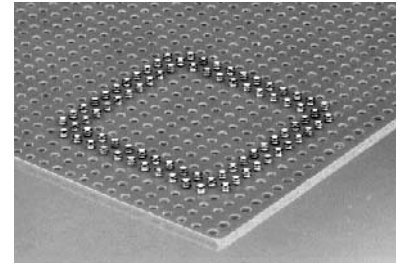
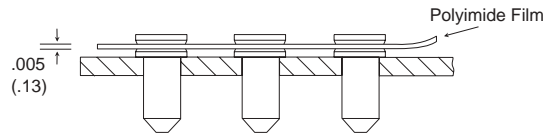
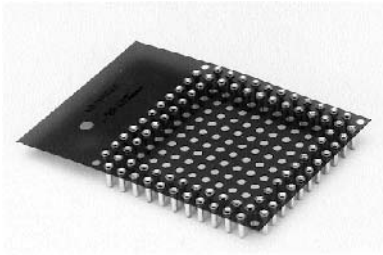


## Peel-A-Way® Low Insertion Force PGA Sockets



### Features:

- Disposable carriers peel away after soldering.
- Peel-A-Way® tabs and full grid wafer supplied on all Peel-A-Way® PGA sockets.
- Maximum air flow under PGA for greater cooling.
- Better flux rinse and cleaning.
- Allows inspection of solder joints on both sides of PCB.
- Lowest profile with use of type -210 terminal.
- Peel-A-Way® disposable socket terminal carrier available in any configuration shown or custom designed to meet your specifications.

### Terminals and Contacts:

Terminal: Brass - Copper Alloy (C36000)  
ASTM-B-16

Contact: Beryllium Copper (C17200)  
ASTM-B-194

### Solder Preform:

63% Tin, 37% Lead

### Plating:

Terminal: Gold over Nickel or  
Tin-Lead over Nickel

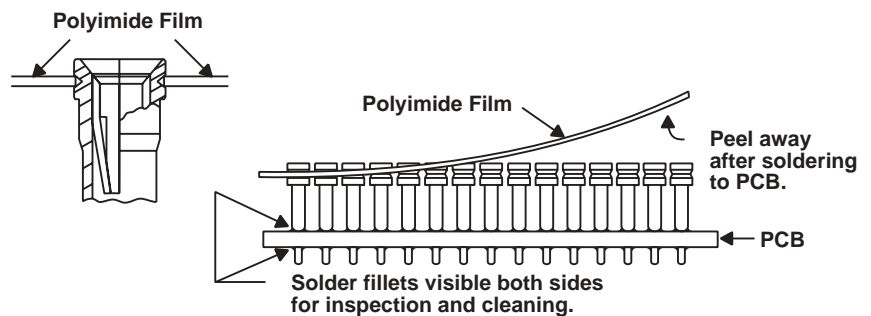
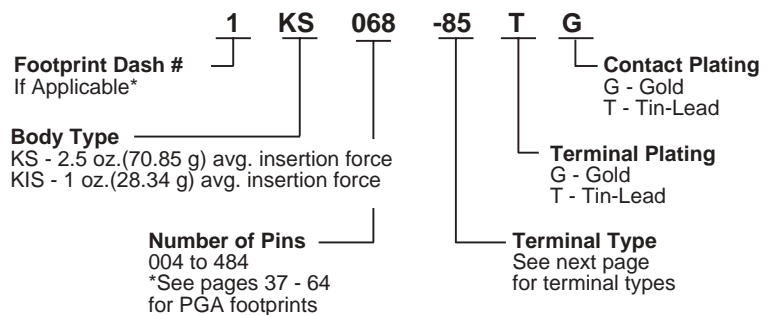
Contact: Gold over Nickel or  
Tin-Lead over Nickel

Gold per MIL-G-45204  
Tin-Lead per MIL-P-81728  
Nickel per QQ-N-290

### Body Material:

**KS/KIS** - Polyimide Film  
-269°C to 400°C (-452°F to 752°F)

### How To Order



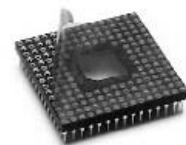
### How To Use:

1. Place socket in PCB.
2. Send PCB and socket through soldering operation.
3. Peel away polyimide film carrier.

### Sealant Options



RTV Sealed



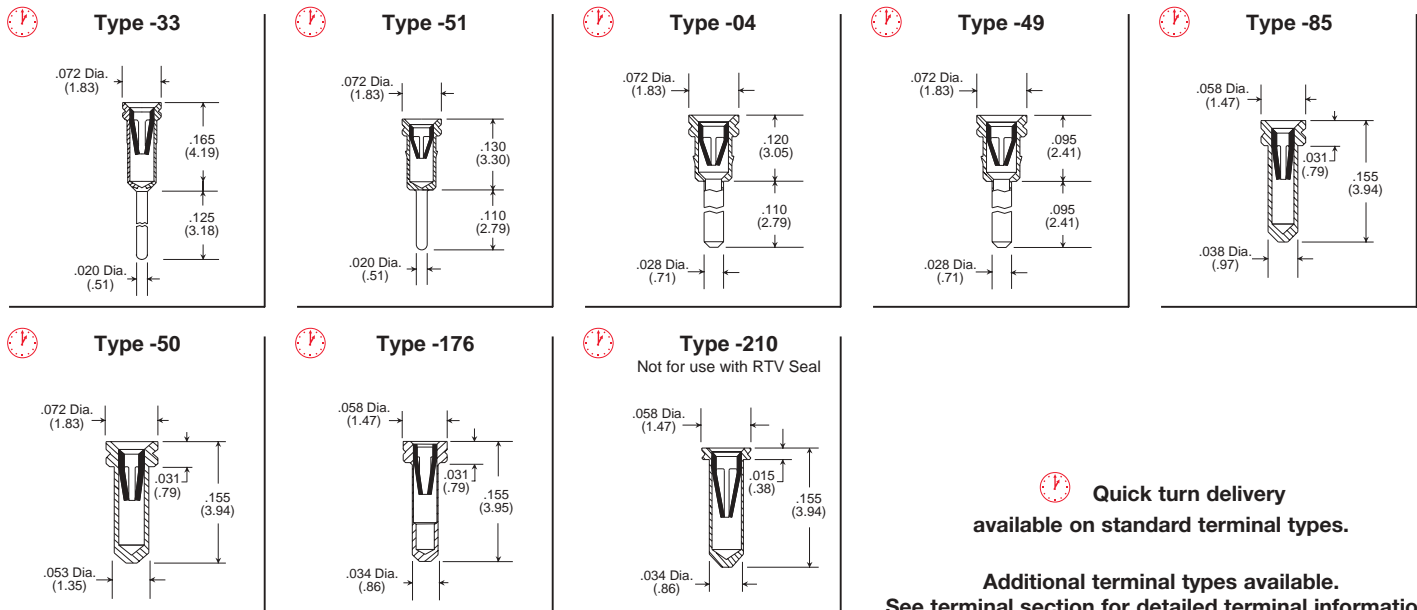
Tape Sealed

To order: Add RTV to end of part #  
Note: RTV not available with HCS or HCIS Insulators

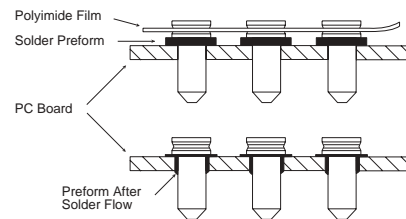
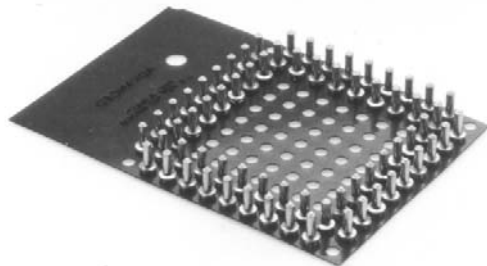
To order: Add 3M to end of part #

Peel-A-Way® covered by patent rights issued and/or pending.

## Terminals for Peel-A-Way® Low Insertion Force PGA Sockets Standard Quick Turn Terminals



## Solder Preform PGA Sockets - Intrusive Reflow Application



### Solder Preform Terminals

#### Features:

- Combines the labor of socket loading and solder application into one operation.
- Eliminates the use of solder paste and screening operation.
- Eliminates solder bridges and/or solder shorts due to excess solder.
- Insures a reliable solder joint with controlled solder volume.
- Ideal for surface mount and mixed technology applications.
- For custom solder preform terminal applications consult factory.
- See previous page for material specifications and how to order information.

