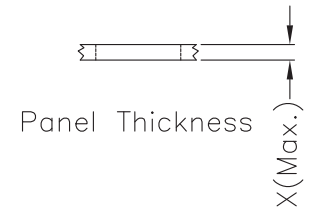
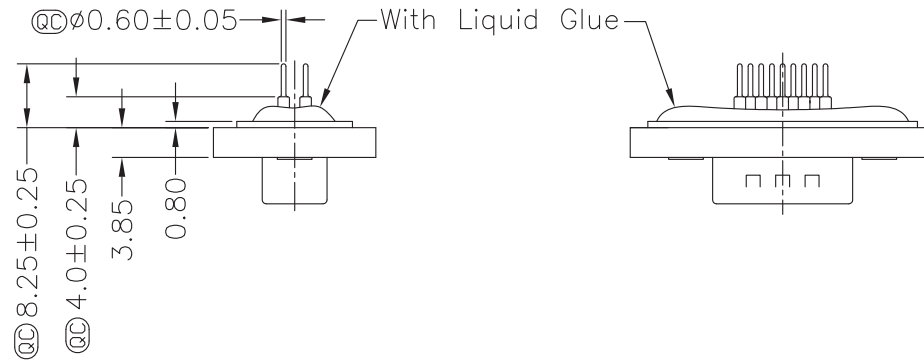
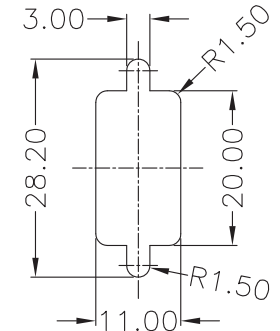
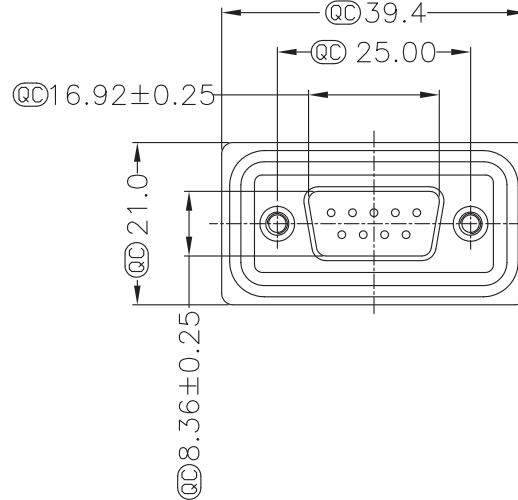
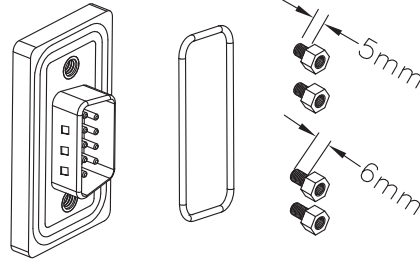
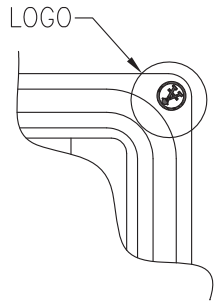


9 Pin Male Connector
PCB Pin Layout
Scale 2:1



Screw L= 5.0 For Panel Thickness
Under 1.2 mm

Screw L= 6.0 For Panel Thickness
Between 1.2~2.0mm



Recommended Panel Cut-Out

Material:

- Waterproof Rate: IP68
 - IP68: 1M of depth of water 24 hours
 - Do Mating Test After Glued
- D-Sub Connector: Black Core, PBT
- Plastic Jacket: Black, Nylon+GF
- Pin: Copper Alloy, Gold Plated
- Ring: Light Blue, Silicone
- Screw: Copper Alloy, Nickel Plated, #4-40 UNC
- The 180° Board Lock Needs To Connect The Iron Shell 180°

QC Quality Control: Important Dimension to check
Unit: MM±0.1MM

Ⓜ = Assmann logo



ITEM NO.

A-DS09PP-WP-R

TITLE

Waterproof DSub Connector - Straight Pin,
for PCB Mount, 9 Contacts Male

ASSMANN

WSW components

1840 W. Drake Drive, Suite 101 • Tempe, AZ 85283
Toll Free: 1-877-277-6266 • Email: info@assmann.us

THIS DRAWING IS UNPUBLISHED
©Copyright 2011 by Assmann WSW components
All International Rights Reserved