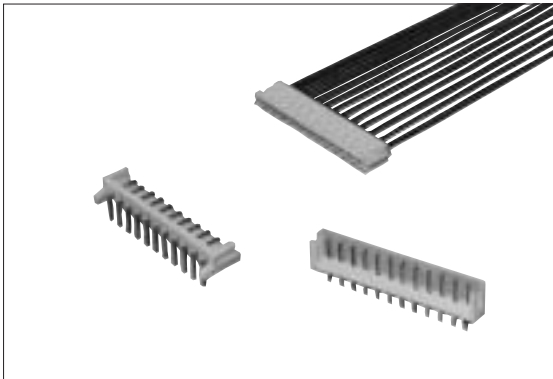


PI Series 2.5mm Spacing



■ Features

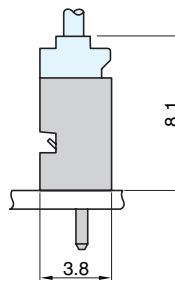
1. It measures only 8.0mm high and 3.8mm thick when the socket and plug are connected.
2. A number of options are available, with the number of poles ranging from 2 to 15 and plug configuration of a straight or right-angle type.
3. A lock mechanism is utilized for the socket and plug housing to ensure firm connection and prevent improper plug insertion.
4. PI series of products are available from facilities in Japan and overseas as follows :
Sockets and plugs : Japan and Singapore
Terminals : Japan and Taiwan
5. A lead-free product.

■ Specifications

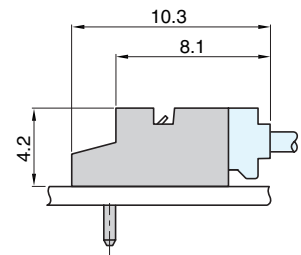
1. Rating : 3A 250V AC/DC
2. Contact Resistance : 20mΩ max.
3. Insulation Resistance : 1000MΩ min. at 500V DC
4. Withstanding Voltage : 100V AC for one minute.
5. Operating Temperature Range : -25°C to +85°C
6. Applicable Wire Size : AWG22 to 28
(Sheath dia. $\varnothing 0.9$ to $\varnothing 1.9$ mm)
7. Applicable P.C. Board Thickness : 1.6mm

■ Connection Diagram

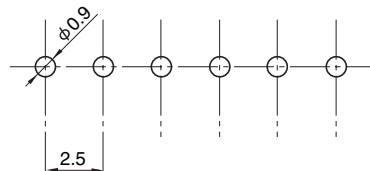
Straight Type



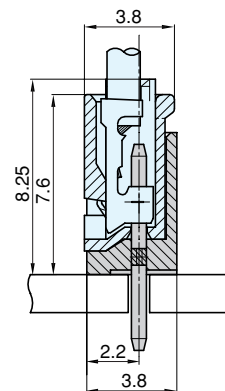
Right-Angle Type



■ P.C. Board Dimension



■ Structural Configuration Diagram

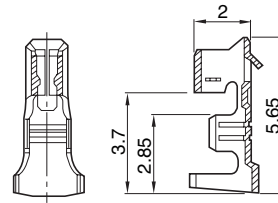


■ Note

Custom made models will be available upon request.

● Terminal

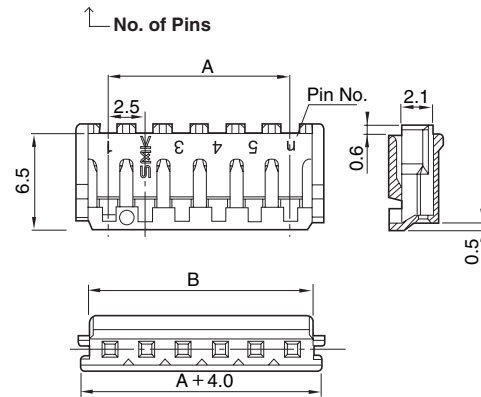
Part No.	Applicable Electrical Wire Size (AWG)	Electrical Wire Sheath Dia. (mm)	Material	Plating	No. of Terminal/ Reel
CTA1122-0901	22~28	φ 1.9~0.9	Phosphor Bronze	Tinned (Reflow Treatment)	15,000



● Housing

□□ No. of Pins	Part No.	A	B
2	CPI1102-0101	2.5	5.3
3	CPI1103-0101	5.0	7.8
4	CPI1104-0101	7.5	10.3
5	CPI1105-0101	10.0	12.8
6	CPI1106-0101	12.5	15.3
7	CPI1107-0101	15.0	17.8
8	CPI1108-0101	17.5	20.3
9	CPI1109-0101	20.0	22.8
10	CPI1110-0101	22.5	25.3
11	CPI1111-0101	25.0	27.8
12	CPI1112-0101	27.5	30.3
13	CPI1113-0101	30.0	32.8
14	CPI1114-0101	32.5	35.3
15	CPI1115-0101	35.0	37.8

CPI 11□□-0101



■ Material and Plating

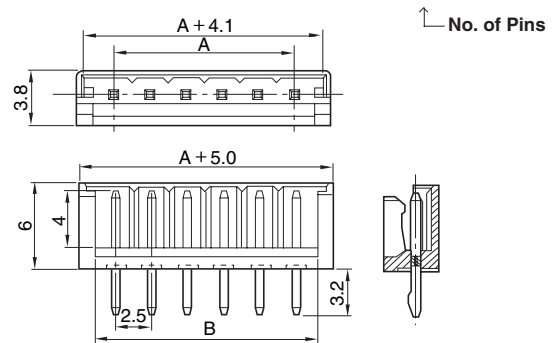
● Housing : Nylon 66, Natural Color, 94V-0

● Plug

□□ No. of Pins	Straight Type	Right-Angle Type	A	B
2	CPI 1502-0101F	CPI 1702-0101F	2.5	5.4
3	CPI 1503-0101F	CPI 1703-0101F	5.0	7.9
4	CPI 1504-0101F	CPI 1704-0101F	7.5	10.4
5	CPI 1505-0101F	CPI 1705-0101F	10.0	12.9
6	CPI 1506-0101F	CPI 1706-0101F	12.5	15.4
7	CPI 1507-0101F	CPI 1707-0101F	15.0	17.9
8	CPI 1508-0101F	CPI 1708-0101F	17.5	20.4
9	CPI 1509-0101F	CPI 1709-0101F	20.0	22.9
10	CPI 1510-0101F	CPI 1710-0101F	22.5	25.4
11	CPI 1511-0101F	CPI 1711-0101F	25.0	27.9
12	CPI 1512-0101F	CPI 1712-0101F	27.5	30.4
13	CPI 1513-0101F	CPI 1713-0101F	30.0	32.9
14	CPI 1514-0101F	CPI 1714-0101F	32.5	35.4
15	CPI 1515-0101F	CPI 1715-0101F	35.0	37.9

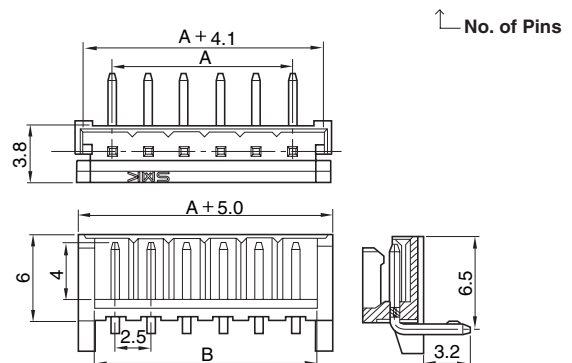
Straight Type

CPI 15□□-0101F



Right-Angle Type

CPI 17□□-0101F



■ Material and Plating

● Housing : Nylon66, Natural Color, 94V-0

● Plug Pin : Brass, Tin Plating (Reflow Treatment)