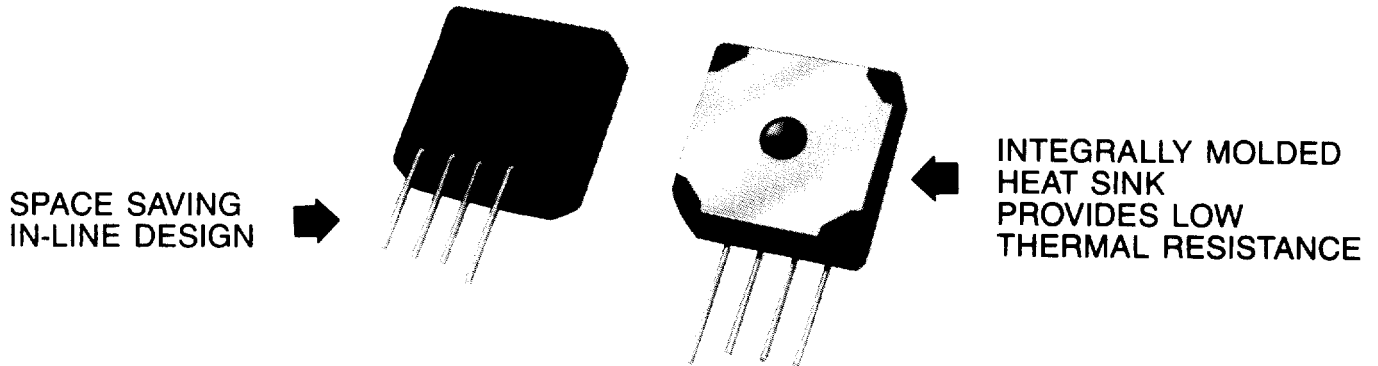


MINIBRIDGE® 40/50 AMPERE SINGLE-PHASE, FULL-WAVE BRIDGES



This product has recognition under the components program of Underwriters Laboratories, Inc.

PRV/LEG	50V	100V	200V	400V	600V	800V	1000V
TYPE NO.	FPIL05	FPIL10	FPIL20	FPIL40	FPIL60	FPIL80	FPIL100
TYPE NO.	MPIL05	MPIL10	MPIL20	MPIL40	MPIL60	MPIL80	MPIL100

ELECTRICAL CHARACTERISTICS PER LEG (at $T_A = 25^\circ\text{C}$ Unless Otherwise Specified)	SERIES DESIGNATION		UNITS
	FPIL	MPIL	
Average Forward Current, I_F (Av.) $T_C = 55^\circ\text{C}$	40	50	Amp
Max. Peak Surge Current I_{FSM} (8.3ms)	300	400	Amp
Max. Instantaneous Forward Voltage Drop, $V_F = 1.2\text{V}$. @ $I_F = \text{Pulse Test}$: Pulse Width 300 US. Duty cycle 2.0%	20	35	Amp
Max. DC Reverse Current @ PRV and 25°C , I_R	10	10	μA
Max. DC Reverse Current @ PRV @ 100°C , I_R	100	100	μA
Thermal Resistance, (Total Bridge $R_{\theta JC}$)	1.2	1.2	$^\circ\text{C} / \text{W}$
Storage Temperature Range, T_{STG}	-55 to $+175^\circ\text{C}$		$^\circ\text{C}$

NOTE Maximum lead and terminal temperature for soldering, 3/8 inch from case, 5 seconds at 250°C .

EDI reserves the right to change these specifications at any time without notice.



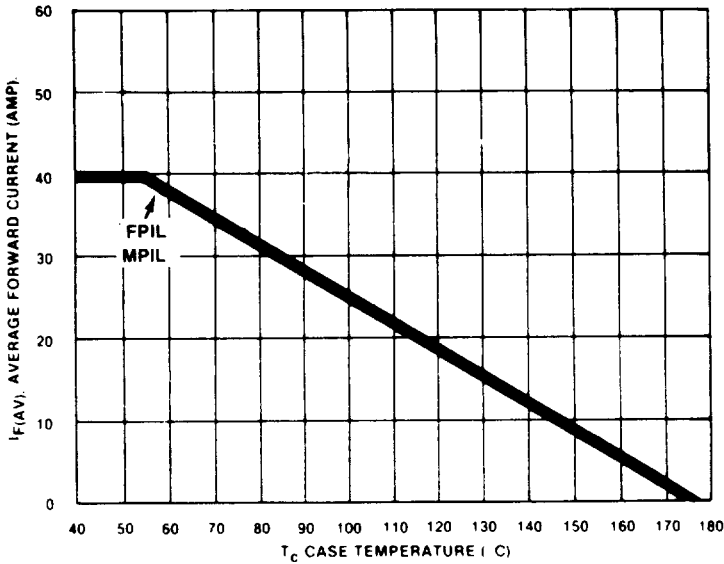
ELECTRONIC DEVICES, INC.

21 GRAY OAKS AVENUE • YONKERS, NEW YORK 10710
914-965-4400 • FAX 914-965-5531 • 1-800-678-0828
e-mail: sales@edidiodes.com • website: www.edidiodes.com



Figure 1

CURRENT DERATING



NOTE: For large capacitive load derate by up to 20%

Figure 2

NON-REPETITIVE SURGE CURRENT

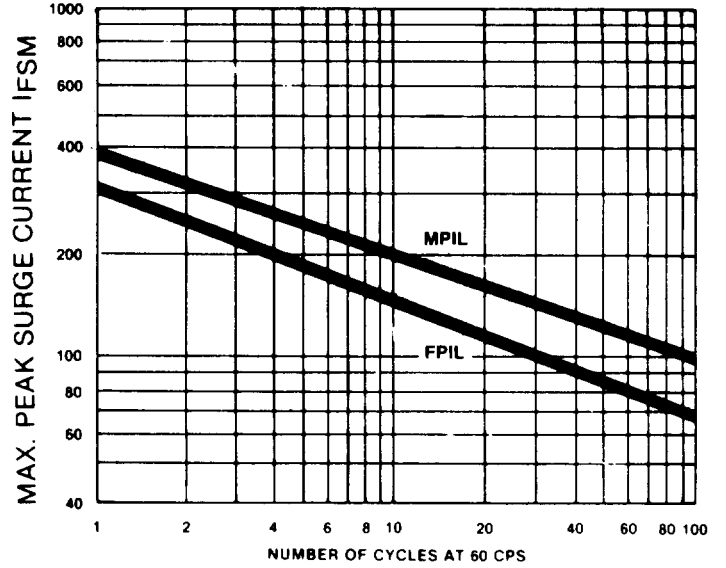
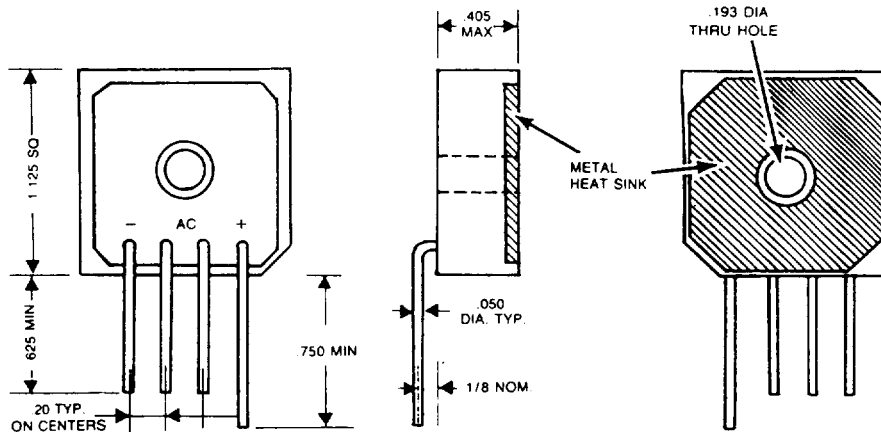


Figure 3

FPIL and MPIL MECHANICAL OUTLINE

Dielectric test voltage 2,500 volts rms, max. 50-60 Hz.



ALL DIMENSIONS IN INCHES