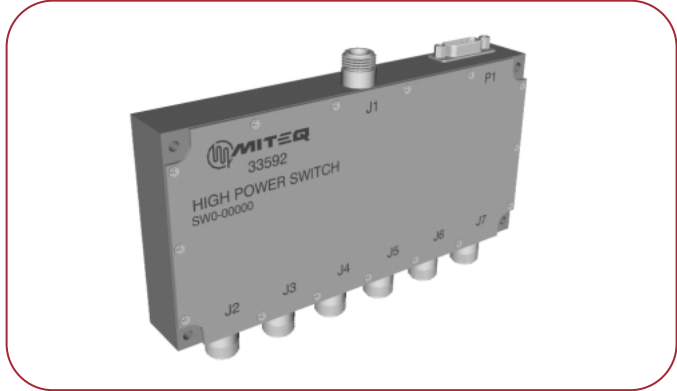


HIGH POWER SWITCHES

FEATURES

- High power handling
- Low insertion loss
- High isolation
- TTL control
- Fast switching



Frequency Range (GHz)	Model Number	# Throw	Insertion Loss (dB, Typ.) (dB, Max.)		Isolation (dB, Min.)	VSWR (Max.)	Type	Power Handling (Watts, CW)(Watts, Peak)		On/Off Time (ns, Max.)
HIGH POWER MODELS										
3.1–3.5	HPSW1-031035RN1NSF	SP2T	0.5	0.8	110	1.25:1	Reflective	20	200	100
0.96–1.215	HPSW2-009012RN2NNF	SP2T	0.3	0.5	27	1.15:1	Reflective	60	3 kW	200
5–5.1	HPSW4-050051RN3NNF	SP4T	0.5	0.8	55	1.25:1	Reflective	40	200	2000
9.5–10.5	HPSW5-095105RN1NSF	SP5T	0.7	1.1	50	1.25:1	Reflective	4	500	200
1–1.1	HPSW6-010011RB4NNF	SP6T	0.45	1.5	40	1.20:1	Reflective	200	2 kW	2000

Electrical performance of multioctave models can be optimized over narrower bandwidths, or for a particular parameter. Electrical options include: Lower insertion loss, lower VSWR, higher isolation, high power, flat amplitude response and amplitude tracking. Mechanical/Control options include: Custom packaging, single supply operation, ultra-fast on/off time, single TTL control line and BCD decoder. Consult MITEQ for options.

ENVIRONMENTAL CONDITIONS

Operating temperature 0 to 70°C
 Storage temperature -40 to +85°C
 Humidity 95%, noncondensing
 Vibration 12 g's rms, 20-2000 Hz Per
 MIL-STD-810B Method
 514, Procedure 5

HIGH POWER SWITCH ORDERING INFORMATION

To order a switch, please include the model number derived from the following table. If requesting a quotation for a switch not listed in this catalog, please consult MITEQ. Include any additional specifications that are not listed.

	HPSW	6	-	010	011	R	B	4	N	N	F
HIGH POWER SWITCH _____											
Number of throw(s) _____											
Frequency (100's of MHz)											
Lower frequency _____											
Upper frequency _____											
Type _____											
Absorptive	A										
Reflective	R										
Logic _____											
Non-inverting	N										
Inverting	I										
Built-in decoder	B										
Power Supply _____											
+5 V, -15 V	1										
+5 V, -70 V	2										
+5 V, -24 V	3										
+5 V, +15, -70 V	4										
Hermeticity _____											
Non-hermetic	N										
Hermetic	H										
Connector Type _____											
SMA	S										
Type N	N										
Connector _____											
Female	F										
Male	M										

AVAILABLE OPTIONS

- Add suffix AM Amplitude matching port-to-port
- Add suffix PM Phase matching port-to-port
- Add suffix VL Low video leakage

Example:

The above illustrated part number HPSW6-010011RB4NNF is for the following:

High Power Switch SP6T
1 to 1.1 GHz
Reflective
Built-in decoder
+5 V, +15 V, -70 V
Non-hermetic
Type N – F connectors

Consult MITEQ for additional options.

When additional options are ordered, MITEQ will add a 4 digit number (-SXXXX) suffix to the part number.



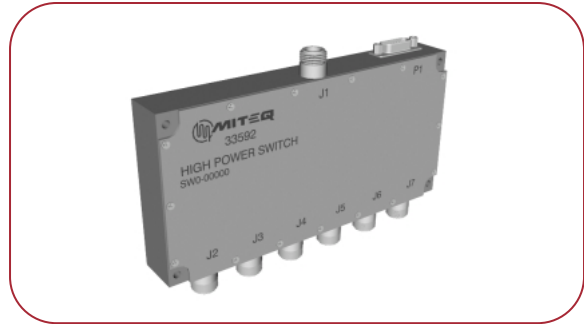
MITEQ

HIGH POWER SINGLE-POLE SIX-THROW SWITCH

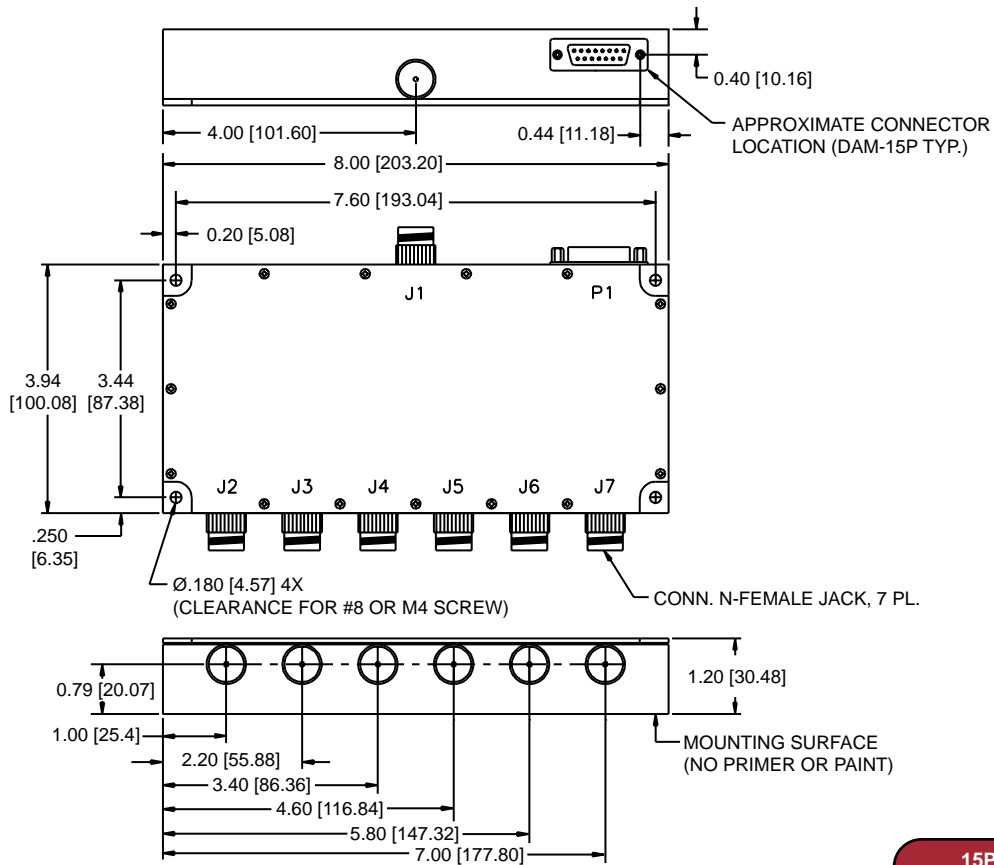
SP6T SWITCH MODEL: HPSW6-010011RB4NNF

FEATURES

- Peak power 2 kW
- Frequency range 1015–1105 MHz
- Insertion loss 0.5 dB typical
- Isolation 40 dB minimum
- Spurious signals internal -60 dBc
- Reflective
- TTL control



OUTLINE DRAWING



15P - CONNECTOR PIN OUT DESIGNATION	
PIN	DESIGNATION
2,9,7,14	GND
1	-70V
10	+5V
12	+15V
8,6,15	3 BIT INPUT
3,4,5	3 BIT OUTPUT

GENERAL NOTES:

1. Dimensions shown in brackets [] are in millimeters.
2. Tolerance as follows:
 .xx = ±0.01 [.xx = ±0.25]
 .xxx = ±0.005 [.xxx = ±0.13]

