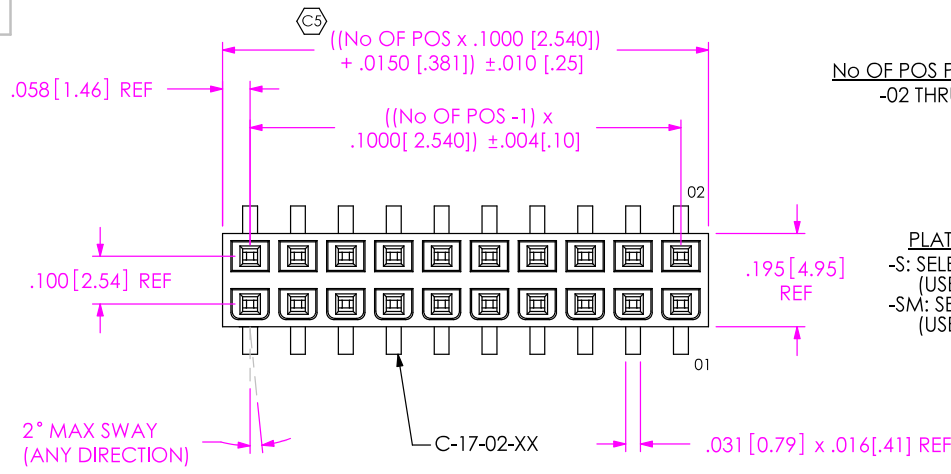


IPS1-1XX-XX-XX-D-VS-XX-XXX

DO NOT SCALE FROM THIS PRINT



NO OF POS PER ROW
-02 THRU -25

LEAD STYLE
-01

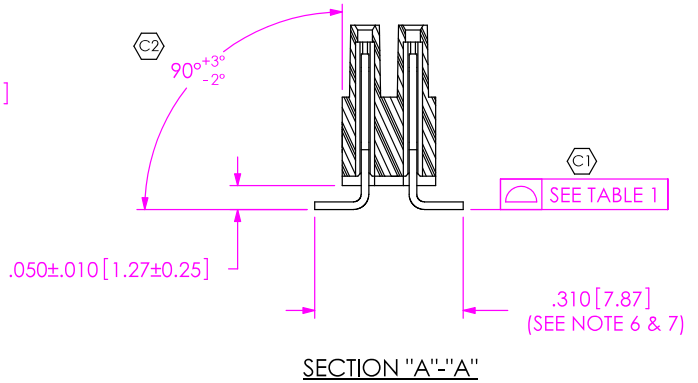
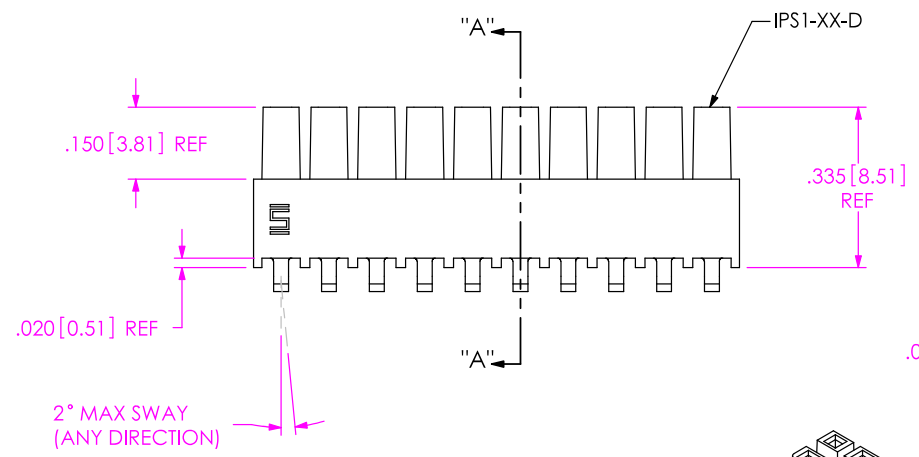
PLATING SPECIFICATION
-S: SELECTIVE GOLD (USE C-17-02-S)
-SM: SELECTIVE GOLD, MATTE TIN TAIL (USE C-17-02-SM)

ROW SPECIFICATION
-D: DOUBLE (USE IPS1-XX-D)

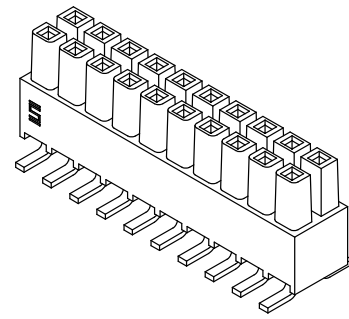
OPTION
-POL: POSITION #1 REMOVED (USE IPS1-XX-D-P)
-FL: FRICTION LOCK (USE IPS1-XX-D-FL-X) [POSITIONS -05 THRU -25]

OPTION
-K: POLYAMIDE FILM PAD [4 POS MIN] (USE K-500-300)
-LC: LOCKING CLIP (USE LC-07-TM)
-TR: TAPE & REEL PACKAGING

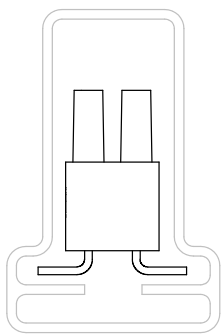
TAIL OPTION
-VS: VERTICAL SURFACE MOUNT



SECTION "A"- "A"



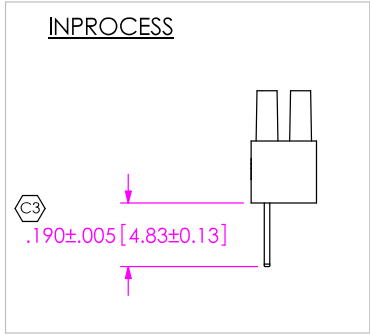
PACKAGING VIEW



TUBE: ASP-90528-01-S
PLUG: TP-03

TABLE 1

POSITION	COPLANARITY
-04 THRU -10	.005 [.13]
-11 THRU -25	.006 [.15]



NOTES:

1. C REPRESENTS A CRITICAL DIMENSION.
2. MAXIMUM ALLOWABLE CUT FLASH: .010 [.25].
3. MINIMUM CONTACT PUSH OUT FORCE: 1.5 lbs.
4. MAXIMUM ALLOWABLE BOW: .003 [.08] INCH/INCH AFTER ASSEMBLY.
5. MAXIMUM VARIATION BETWEEN PIN ROWS: .010 [.25].
6. SHEAR TAILS TO ACHIEVE DIMENSION SHOWN.
7. SHEAR BURR ALLOWED ON TOP SIDE (MOLD SIDE) TO .005 [.13] MAX.
8. "END WALLS" AFTER CUTTING SHOULD BE .015 +/- .003 [.38 +/- .08].

UNLESS OTHERWISE SPECIFIED, DIMENSIONS ARE IN INCHES.
TOLERANCES ARE:
DECIMALS ANGLES
.XX: $\pm .01 [3]$ $\pm 2^{\circ}$
.XXX: $\pm .005 [13]$
.XXXX: $\pm .0020 [051]$

PROPRIETARY NOTE
THIS DOCUMENT CONTAINS INFORMATION CONFIDENTIAL AND PROPRIETARY TO SAMTEC, INC. AND SHALL NOT BE REPRODUCED OR TRANSFERRED TO OTHER DOCUMENTS OR DISCLOSED TO OTHERS OR USED FOR ANY PURPOSE OTHER THAN THAT WHICH IT WAS OBTAINED WITHOUT THE EXPRESSED WRITTEN CONSENT OF SAMTEC, INC.

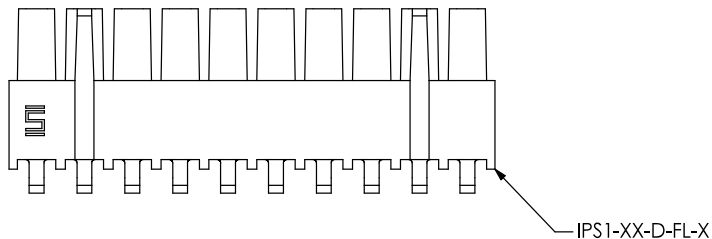
SAMTEC

520 PARK EAST BLVD. NEW ALBANY, IN 47150
* PHONE: 812.944.6733 FAX: 812.948.5047
e-Mail: INFO@SAMTEC.COM CODE: 55322

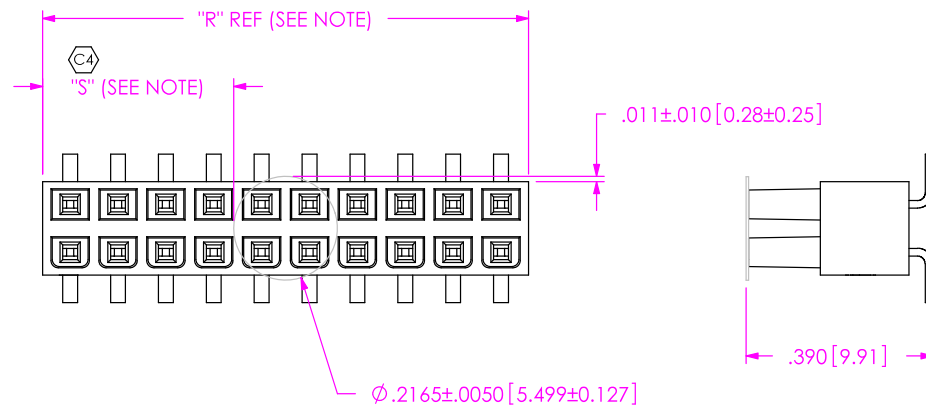
MATERIAL: DO NOT SCALE DRAWING SHEET SCALE: 2.5:1
INSULATOR: VECTRA E130i, COLOR: BLACK
CONTACT: PHOS BRONZE, 510 SPRING TEMPER

DESCRIPTION:
.100 DOUBLE ROW SHROUDED SOCKET ASSEMBLY
DWG. NO.
IPS1-1XX-XX-XX-D-VS-XX-XXX
BY: DEAN P 10-30-2002 SHEET 1 OF 2

-FL: FRICTION LOCK OPTION
IPS1-110-01-X-D-VS-FL SHOWN

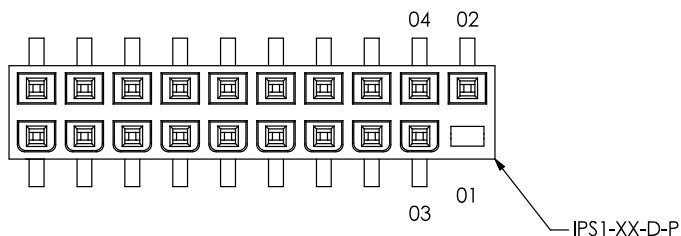


-K: POLYAMIDE FILM PAD OPTION

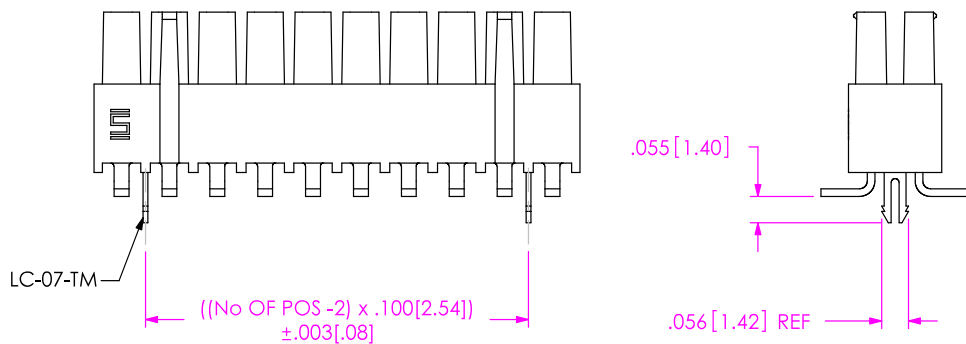


NOTE: "R" = USE MEASURED DIMENSION
"S" = $((\text{"R"} - .2165 [5.499]) / 2) \pm .020 [0.51]$

-POL: POLARIZED OPTION
IPS1-110-01-X-D-VS-POL SHOWN



-LC: LOCKING CLIP OPTION
IPS1-110-01-X-D-VS-LC-FL SHOWN



<p>PROPRIETARY NOTE THIS DOCUMENT CONTAINS INFORMATION CONFIDENTIAL AND PROPRIETARY TO SAMTEC, INC. AND SHALL NOT BE REPRODUCED OR TRANSFERRED TO OTHER DOCUMENTS OR DISCLOSED TO OTHERS OR USED FOR ANY PURPOSE OTHER THAN THAT WHICH IT WAS OBTAINED WITHOUT THE EXPRESSED WRITTEN CONSENT OF SAMTEC, INC.</p> <p>DO NOT SCALE DRAWING</p> <p>SHEET SCALE: 2.5:1</p>	<h1>SAMTEC</h1>	
	<p>520 PARK EAST BLVD, NEW ALBANY, IN 47150 * PHONE: 812.944.6733 FAX: 812.948.5047 e-Mail: INFO@SAMTEC.COM CODE: 55322</p>	
	<p>DESCRIPTION: .100 DOUBLE ROW SHROUDED SOCKET ASSEMBLY</p>	
	<p>DWG. NO. IPS1-1XX-XX-XX-D-VS-XX-XXX</p>	
<p>BY: DEAN P</p>	<p>10-30-2002</p>	<p>SHEET 2 OF 2</p>