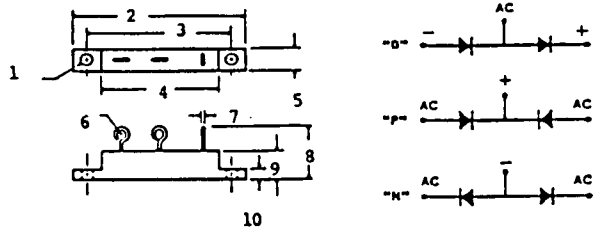


X00082 15 AMP RECTIFIER ASSEMBLY SDA 380-SDA 381-SDA 382

STANDARD-FAST-ULTRA FAST

- CURRENT RATINGS TO 15 AMPS
- INSULATED ALUMINUM HEAT SINK
- GLASS PASSIVATED JUNCTION
- HERMETICALLY SEALED
- CONTROLLED AVALANCHE
- PIV = 100 TO 1000 VOLTS
- SURGE RATING TO 150 AMPS

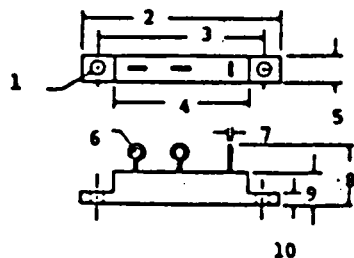


See backside for key to dimensions

SSDI introduces a new and complete line of Doubler and Positive/Negative Center Tap Rectifier Circuits. Die cast aluminum cases provide a low thermal resistance of 4.0° centigrade per watt. Low cost Loop Terminals provide reliable and convenient termination. Consult our Sales Engineering Department for assistance.

Type	PIV per leg	Sine Wave RMS input Voltage Max.	Average DC Output Amps TC (case temp.)		Reverse * Recovery Time T _{rr} Max	Average DC Output Amps TA = Ambient Temp (No heat Sink)		Peak 1 Cycle Forward Surge	Peak Recurrent Forward	VF Max per leg @ ADC	Reverse Current (I _R Max. per leg. @ PIV)	
			50°C	100°C		25°C	55°C				25°C	100°C
	VOLTS	VOLTS	AMPS	AMPS	ns	AMPS	AMPS	AMPS	AMPS	VOLTS	UA	UA
SDA 380 A	50	35	15	10	4000	5.0	3.0	150	75	1.0	1.0	100
SDA 381 A	50	35	15	10	150	5.0	3.0	150	75	1.2	1.0	100
SDA 382 A	50	35	15	10	50	5.0	3.0	150	75	1.5	5.0	100
SDA 380 B	100	70	15	10	4000	5.0	3.0	150	75	1.0	1.0	100
SDA 381 B	100	70	15	10	150	5.0	3.0	150	75	1.2	1.0	100
SDA 382 B	100	70	15	10	50	5.0	3.0	150	75	1.5	5.0	100
SDA 380 C	200	140	15	10	4000	5.0	3.0	150	75	1.0	1.0	100
SDA 381 C	200	140	15	10	150	5.0	3.0	150	75	1.2	1.0	100
SDA 382 C	200	140	15	10	50	5.0	3.0	150	75	1.5	5.0	100
SDA 380 D	400	280	15	10	4000	5.0	3.0	150	75	1.0	1.0	100
SDA 381 D	400	280	15	10	150	5.0	3.0	150	75	1.2	1.0	100
SDA 382 D	400	280	15	10	50	5.0	3.0	150	75	1.5	5.0	100
SDA 380 E	600	420	15	10	4000	5.0	3.0	150	75	1.0	1.0	100
SDA 381 E	600	420	15	10	150	5.0	3.0	150	75	1.2	1.0	100
SDA 382 E	600	420	15	10	50	5.0	3.0	150	75	1.5	5.0	100
SDA 380 F	800	560	15	10	4000	5.0	3.0	150	75	1.0	1.0	100
SDA 381 F	800	560	15	10	150	5.0	3.0	150	75	1.2	1.0	100
SDA 382 F	800	560	15	10	60	5.0	3.0	150	75	1.9	5.0	100
SDA 380 G	1000	700	15	10	4000	5.0	3.0	150	75	1.0	1.0	100
SDA 381 G	1000	700	15	10	150	5.0	3.0	150	75	1.2	1.0	100
SDA 382 G	1000	700	15	10	60	5.0	3.0	150	75	1.9	5.0	100

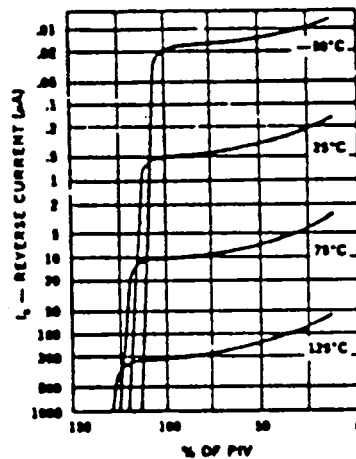




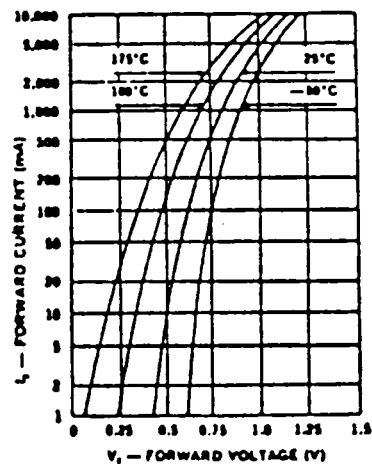
DEVICE DIMENSIONS
(inches)

- 1 = .165 - .180 (2 Places)
- 2 = 2.260 - 2.240
- 3 = 1.865 - 1.885
- 4 = 1.460 - 1.480
- 5 = .354 - .334
- 6 = .09 Diameter typically
- 7 = Tinned copper .040 typically
- 8 = .700 maximum
- 9 = .365 - .385
- 10 = .135 - .115

Reverse Current vs. PIV



Forward Current vs.
Forward Voltage



SDA 380 ONLY

SDA 381= Same curve, Add 200 mV.

SDA 382= Same curve, Add 500 mV.