

# 20 Watts

## AA20C

Total Power: 20 Watts  
 Input Voltages: 48V  
 No. of Outputs: Single



### Electrical Specs

#### Input

Input range	36 to 75 VDC
Input capacitance	1.6 $\mu$ F typ (48 models)
No load input power	150mW max
Efficiency	84% typical (5V)

#### Output

Voltage tolerance	$\pm 1.0\%$
Overall regulation	$\pm 2\%$ max
Noise/ripple	1% (mV P-P)
Short circuit protection	Continuous Power Cycle
Overvoltage protection	Zener Clamp (125% of nom)
Transient response	1 msec typical (50% step load change to within 1%Vo)

Temperature Coefficient  $\pm 0.02$  °C

Switching frequency 400kHz

#### Isolation

I/O isolation	1500 VDC
Isolation resistance	1 x 10 <sup>9</sup> (Ohms)
Isolation capacitance	220pF

### Special Features

- 20 W, Single output
- 2:1 Input range
- Unencapsulated package
- 1.6" x 2.0" x 0.38 case
- Replaces AA20B series
- Industry standard package

### Environmental

Operating base temperature range:

-40°C to +105°C (full load, no derating)

Storage temperature: -55°C to +125°C

Humidity: 5% to 95% (non-condensing)

EMI RFI Shielding: Six sided (except 033-M1)

MTBF: 361,000 hours (MIL HDBK-217)

### Safety

UL UL1950 Recognition

CSA CSA22.2-950 Recognition

TUV EN60950 Recognition

AMERICAS

5810 Van Allen Way  
 Carlsbad, CA 92008  
 Telephone: 760-930-4600  
 Facsimile: 760-930-0698

EUROPE

Astec House, Waterfront Business Park  
 Merry Hill, Dudley  
 West Midlands, DY5 1LX, UK  
 Telephone: 44 (1384) 842-211  
 Facsimile: 44 (1384) 843-355

ASIA

Units 2111-2116, Level 21  
 Tower1, Metroplaza  
 223, Hing Fong Road  
 Fwai Fong, New Territories  
 Hong Kong  
 Telephone: 852-2437-9662  
 Facsimile: 852-2402-4426



AA20C

## Ordering Information

Input Voltage	Output Voltage	Efficiency	Model Number
36-75 V	3.3V @ 6.0 A	79%	AA20C-048L-0335-M1
36-75 V	5.0V @ 4.0 A	84%	AA20C-048L-050S
36-75 V	12V @ 2.0 A	87%	AA20C-048L-120S

NOTES:

Enable Function

"1" = negative logic enable (std, without "1 or 4" = no enable)

"4" = positive logic enable (std, without "1 or 4" = no enable)

Trim Feature

"9" = Trim feature (std, without "9" no Trim)

## Pin Assignments

### Single Output

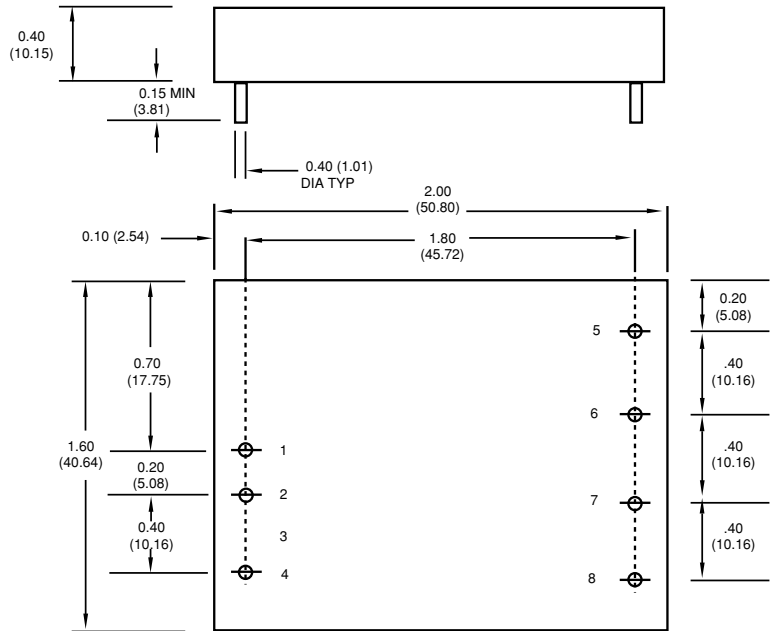
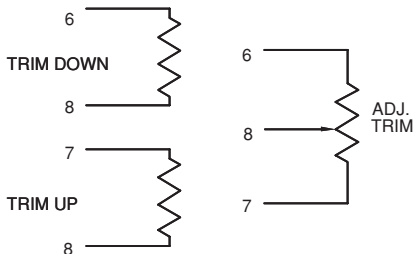
1. +Vin
2. -Vin
3. No pin
4. Enable
5. No pin
6. Output 1
7. COM
8. Trim

**Note:**

Pins 0.040 in Dia x 0.15 in min

Warranty: 1 yr

### SINGLE OUTPUT



BOTTOM VIEW

ALL DIMENSIONS ARE IN INCHES (mm)

Case Material: Metal base/cover

Weight: 2.0 oz./56 grams.

Astec Industry Standard