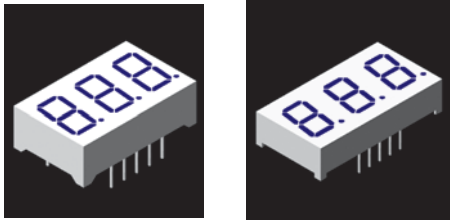


LED Displays ~ Seven Segment ~ Numeric



Triple Digit



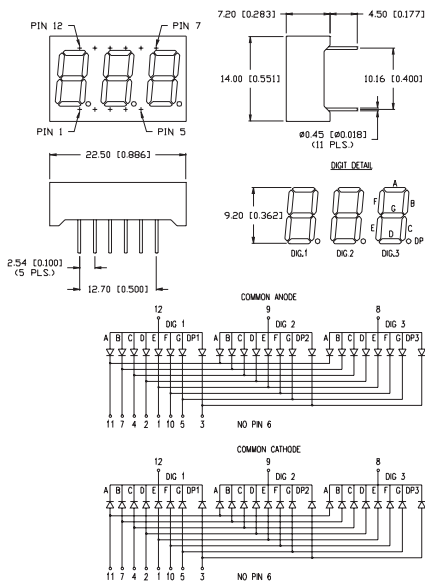
Features/Options

- ▶ Standard and high brightness chips
- ▶ Intensity grading available
- ▶ Custom sizes at minimal tooling
- ▶ Face and segment off colors in grey and milky white

Applications/Uses

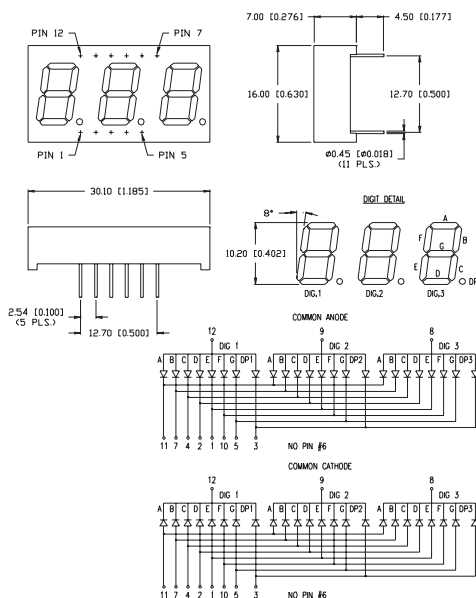
- ▶ Panel meter displays
- ▶ Time lapsed panels
- ▶ Diagnostic equipment
- ▶ Counter displays

0.36" triple digit



Part Number	Wave Length (nm)	Brightness (μcd) @ 10mA	Vf (typ) 10mA	Vf (max) 10mA	Emitted Color	Polarity (common)
LDT-M3602RI	565	2500	2.2	2.6	Green	Anode
LDT-M3604RI	635	2500	2.0	2.5	Red	Anode
LDT-M3606RI	660	8000	1.7	2.2	Red	Anode
LDT-M3602RI-SUG	574	7000	2.2	2.6	Green	Anode
LDT-M3604RI-SI	636	15,000	2.0	2.6	Red	Anode
LDT-M3607RI-USB	470	6000	3.5	4.0	Blue	Anode
LDT-N3602RI	565	2500	2.2	2.6	Green	Cathode
LDT-N3604RI	635	2500	2.0	2.5	Red	Cathode
LDT-N3606RI	660	8000	1.7	2.2	Red	Cathode
LDT-N3602RI-SUG	574	7000	2.2	2.6	Green	Cathode
LDT-N3604RI-SI	636	15,000	2.0	2.6	Red	Cathode
LDT-N3607RI-USB	470	6000	3.5	4.0	Blue	Cathode

0.40" triple digit



Part Number	Wave Length (nm)	Brightness (μcd) @ 10mA	Vf (typ) 10mA	Vf (max) 10mA	Emitted Color	Polarity (common)
LDT-M4002RI	565	2500	2.2	2.6	Green	Anode
LDT-M4004RI	635	2500	2.0	2.5	Red	Anode
LDT-M4006RI	660	8000	1.7	2.2	Red	Anode
LDT-M4002RI-SUG	574	7000	2.2	2.6	Green	Anode
LDT-M4004RI-SI	636	15,000	2.0	2.6	Red	Anode
LDT-M4007RI-USB	470	6000	3.5	4.0	Blue	Anode
LDT-N4002RI	565	2500	2.2	2.6	Green	Cathode
LDT-N4004RI	635	2500	2.0	2.5	Red	Cathode
LDT-N4006RI	660	8000	1.7	2.2	Red	Cathode
LDT-N4002RI-SUG	574	7000	2.2	2.6	Green	Cathode
LDT-N4004RI-SI	636	15,000	2.0	2.6	Red	Cathode
LDT-N4007RI-USB	470	6000	3.5	4.0	Blue	Cathode



USA/Canada +1-800-278-5666
Europe +49-6081-964380
Asia +886-3-5821124



www.lumex.com



USA/Canada +1-847-359-8904
Europe +49-6081-964381
Asia +886-3-5821154

- 1
- 2
- 3
- 4
- 5
- 6
- 7
- 8
- 9
- 10
- 11
- 12
- 13
- 14
- 15
- 16
- 17
- 18
- 19
- 20
- 21
- 22
- 23
- 24
- 25
- 26
- 27
- 28
- 29