

PLEASE CHECK WWW.MOLEX.COM FOR LATEST PART INFORMATION

Part Number: [0192020027](#)
Status: **Active**
Description: Funnel Entry Butt Splice for 14-16 AWG Wire

Documents:
[Drawing \(PDF\)](#) [RoHS Certificate of Compliance \(PDF\)](#)

Agency Certification

UL E32244

General

Product Family Splices
 Series [19202](#)
 Crimp Quality Equipment Yes
 Mil-Spec N/A
 Product Name Butt - Funnel Entry

Physical

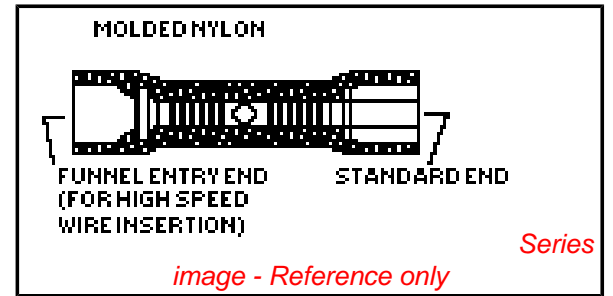
Barrel Type Closed
 Flammability 94V-0
 Insulation Nylon (PA)
 Packaging Type Adhesive Tape on Reel
 Wire Insulation Diameter 4.70mm (.185") max. Funnel End, 5.05mm (.199") max.
 Wire Size AWG 14, 16

Material Info

Old Part Number BS-942-DK

Reference - Drawing Numbers

Sales Drawing SD-19202-001



EU RoHS

ELV and RoHS Compliant

REACH SVHC

Not Reviewed

Halogen-Free

Status

Not Reviewed

China RoHS



Need more information on product environmental compliance?

Email productcompliance@molex.com
 For a multiple part number RoHS Certificate of Compliance, [click here](#)

Please visit the [Contact Us](#) section for any non-product compliance questions.

Search Parts in this Series

[19202Series](#)

Application Tooling | FAQ

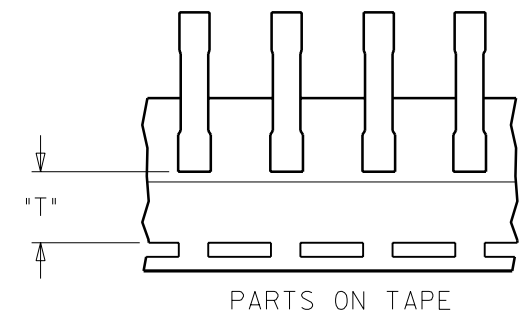
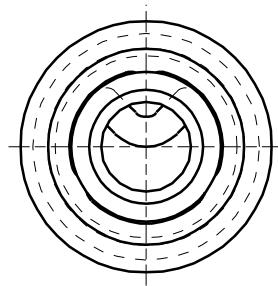
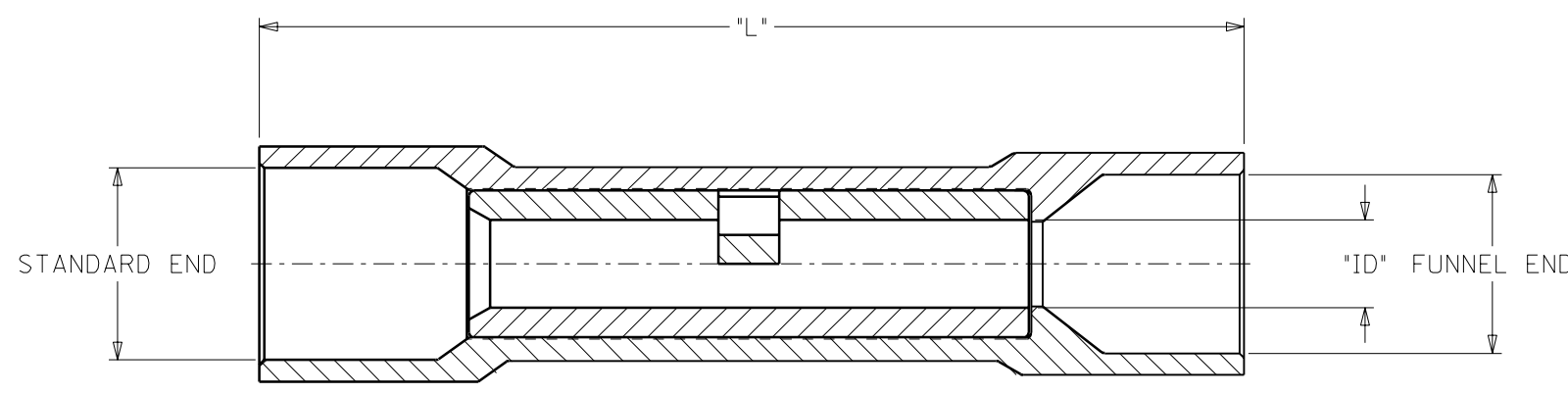
Tooling specifications and manuals are found by selecting the products below. Crimp Height Specifications are then contained in the Application Tooling Specification document.

Global

| Description | Product # |
|--|----------------------------|
| Hand Crimp Tool | 0640010100 |
| Hand Crimp Tool | 0640010300 |
| Hand Crimp Tool | 0640016500 |
| Crimp Head for the AT-200™ Pneumatic Hand Tool | 0640050100 |
| Crimp Head for the AT-200™ Pneumatic Hand Tool | 0640050300 |
| Crimp Head for the AT-200™ Pneumatic Hand Tool | 0640056500 |

PLEASE CHECK WWW.MOLEX.COM FOR LATEST PART INFORMATION

| MATERIAL NUMBER | ALTERNATE NUMBER | WIRE SIZE AWG | INSULATION COLOR | CONNECTOR ID | MAX. WIRE INSUL. DIA. | | LENTH "L" | TAPE HEIGHT "T" | DESCRIPTION |
|-----------------|------------------|---------------|------------------|--------------|-----------------------|------------|-----------|-----------------|-------------------------------|
| | | | | | STANDARD END | FUNNEL END | | | |
| F 192020010 | AS-932 | 22-18 | LIGHT RED | .061 | .161 | .147 | 1.07 | ---- | LOOSE PIECE |
| F 192020011 | AS-932-DK | 22-18 | DARK RED | .061 | .161 | .147 | 1.07 | ---- | LOOSE PIECE |
| 192020012 | AS-932-DKT | 22-18 | DARK RED | .061 | .161 | .147 | 1.07 | .480 | TAPE MOUNTED |
| 192020026 | BS-942 | 16-14 | LIGHT BLUE | .087 | .199 | .185 | 1.07 | ---- | LOOSE PIECE |
| 192020030 | BS-942T | 16-14 | LIGHT BLUE | .087 | .199 | .185 | 1.07 | .480 | TAPE MOUNTED |
| 192020027 | BS-942-DK | 16-14 | DARK BLUE | .087 | .199 | .185 | 1.07 | ---- | LOOSE PIECE |
| 192020029 | BS-942-DKT | 16-14 | DARK BLUE | .087 | .199 | .185 | 1.07 | .480 | TAPE MOUNTED |
| 192020028 | BS-942-DKBT | 16-14 | DARK BLUE | .087 | .199 | .185 | 1.07 | .480 | TAPE MOUNTED LARGE REEL |
| E 192020131 | BS-942-B | 16-14 | BLUE | .087 | .199 | .185 | 1.07 | ---- | LOOSE PIECE |
| 192020130 | BS-932-BBT | 16-14 | BLUE | .087 | .199 | .185 | 1.07 | .480 | TAPE MOUNTED LARGE REEL |
| 192020045 | CS-952 | 12-10 | YELLOW | .138 | .276 | .262 | 1.15 | ---- | LOOSE PIECE |
| 192020046 | CS-952-DK | 12-10 | DARK YELLOW | .138 | .276 | .262 | 1.15 | ---- | LOOSE PIECE |
| 192020047 | CS-952-DKT | 12-10 | DARK YELLOW | .138 | .276 | .262 | 1.15 | .440 | TAPE MOUNTED |
| 192020048 | CS-952-DKBT | 12-10 | DARK YELLOW | .138 | .276 | .262 | 1.15 | .440 | TAPE MOUNTED LARGE REEL |
| 192020141 | CS-952 BULK | 12-10 | YELLOW | .138 | .276 | .262 | 1.15 | ---- | BULK PACKED, 2500 PER PACKAGE |
| D 192020142 | CS-952-DK BULK | 12-10 | DARK YELLOW | .138 | .276 | .262 | 1.15 | ---- | BULK PACKED, 2500 PER PACKAGE |



NOTES:
 1. MATERIAL: COPPER.
 2. PLATING: ELECTRON-TIN.
 3. INSULATION: 6/6 NYLON

CUSTOMER DRAWING

| DIMENSIONS SHOWN (METRIC) INCH | | | |
|---|--------|-----------|-------|
| UNLESS OTHERWISE SPECIFIED TOLERANCES: ANGULAR ± 1/2° | | | |
| | INCH | METRIC | |
| 3 PLACE | ± .005 | ± --- | |
| 2 PLACE | ± .01 | ± 0.13 | |
| 1 PLACE | ± --- | ± 0.25 | |
| DRAFT WHERE APPLICABLE MUST REMAIN WITHIN DIMENSIONS | | | |
| DRWG. BY | HEB | CHK'D. BY | RWD |
| APP'D. BY | RWD | SCALE | NO:NE |

| REVISE ONLY ON CAD SYSTEM | | | |
|--|-------|---------------------------|------------------|
| TITLE FUNNEL ENTRY SEAMLESS NYLAKRIMP BUTT CONNECTOR | | | |
| molex ETC INC. PINELLAS PARK, FLA. 33781 U.S.A. | | SHEET NO. 1 OF 1 | DATE 00/07/18 |
| PART NO. SEE TABLE | | DRWG. NO. SD-19202-001 | |
| THIS DRAWING CONTAINS INFORMATION THAT IS PROPRIETARY TO MOLEX-ETC INC. AND SHOULD NOT BE USED WITHOUT WRITTEN PERMISSION. | | | |
| FILE NAME SD19202001 DGN | SCALE | DIV. ET | SIZE B |

| | |
|------|--|
| A | RELEASE NEW DOC. ETC2001-0075 2000/07/18 HEB |
| LTR. | REVISIONS |