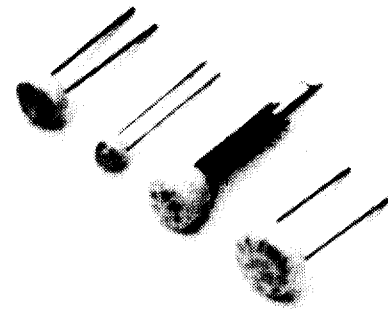


# SPECTRUM DEVICES 4 & 8 CHIP (4.8mm & 7mm) CERAMIC LEDS.

**FEATURES:** HIGH FLUX,HIGH-INTENSITY,HIGH SHOCK AND VIBRATION RESISTANCE.LOW POWER CONSUMPTION, CHOICE OF 7 COLORS,WIDE VIEWING ANGLE,100,000 HR LIFE.

**APPLICATIONS:** EXCELLENT FOR BACKLIGHTING LCD AND LIGHTED PUSHBUTTON SWITCHES AND WHERE LARGE AREA ILLUMINATION IS REQUIRED.



## OPTICAL DATA at 25 deg C and 16mA/circuit. COLORS

PARAMETERS	UR	HR	O	Y	G	PG	BL	WHT	UNIT
TYP INTENSITY. 4CHIP: 8CHIP	86 : 172	34 : 68	30 : 60	32 : 64	52 : 104	25 : 50	81 : 162	52 : 104	mcd
PEAK WAVELENGTH	660	635	610	585	570	555	470	590	nM
VIEWING ANGLE	160	160	160	160	160	160	160	160	deg
TYP FWD VOLTAGE PER CHIP	1.7	1.9	1.9	2	2.1	2.1	3.1	4 **	V
MAX FWD CURRENT.PER CKT*	18	18	18	18	16	16	13	18	mA
MAX POWER. 4CHIP : 8CHIP	146 : 293	146 : 293	193 : 293	193 : 293	140 : 280	140 : 280	156 : 312	146 : 293	mW

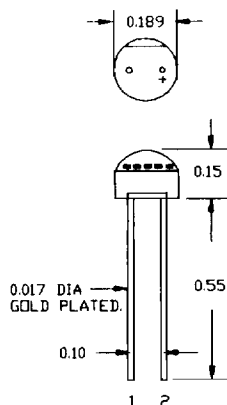
\*\* FORWARD VOLTAGE OF WHITE LED IS FOR THE COMBINED DROP OF ONE EA RED/GREEN LEDS IN SERIES.FWD VOLTAGE DROP OF BRIDGE DIODES IS 0.7V.\* MAX FWD CURRENT IS PER CIRCUIT.

TEMPERATURE: STORAGE TEMP: -30 TO + 100 DEG C . OPERATING TEMP : -30 TO +60 DEG C

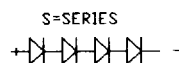
## PART NUMBERING SYSTEM

L54	HR	S	
<b>MODEL</b> SELECT ONE FROM FIGURES	<b>COLORS</b> UR=ULTRA RED,HR=HI-EFF RED, O=ORANGE Y=YELLOW,G=GREEN,PG=PURE GREEN BL=BLUE,WHT=WHITE, HR/G = BI-COLOR HI-EFF RED + GREEN.	<b>CIRCUIT TYPE</b> S = SERIES 2P = 2 PARALLEL 4P = 4 PARALLEL SEE CIRCUITS BELOW. CALL FOR SPECIALS.	

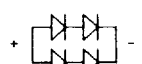
L54=4CHIP  
L54BP=4CHIP/BRIDGED.



BRIDGE NOT SHOWN.

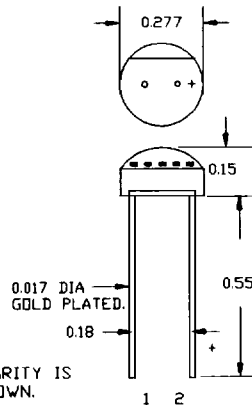


2P=2 PARALLEL

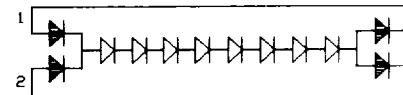


ULTRA-RED POLARITY IS  
REVERSE OF SHOWN.

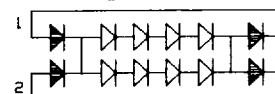
L78=8CHIP  
L78BP=8CHIP/BRIDGED.



BRIDGED LED CIRCUITS.  
S=SERIES



2P=2 PARALLEL



4P=4PARALLEL

