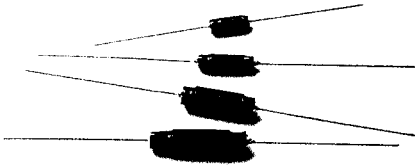


RC TYPE Series

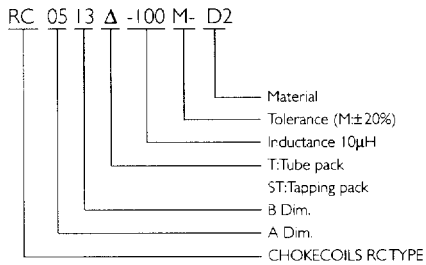


TEST INSTRUMENTS:

L : HP 4342A Q Meter

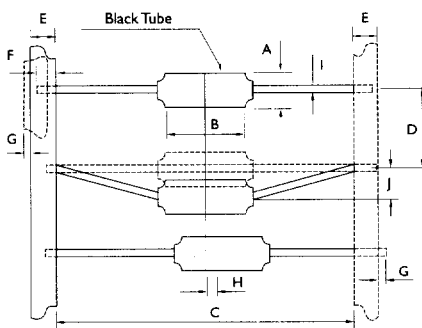
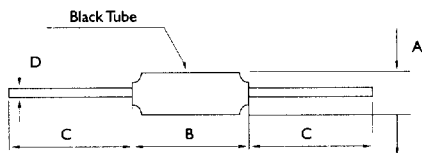
IDC : HP 4261A Digital LCR Meter

PRODUCT IDENTIFICATION



DIMENSIONS

Dimensions : mm



	RC0513T	RC0519T	RC0621T	RC0628T
A		5 ⁺⁰		6 ⁺⁰
B	13 ⁺⁰	19 ⁺⁰	21 ⁺⁰	28 ⁺⁰
C			30 ⁻⁰	
D		0.65 \varnothing		0.8 \varnothing

	RC0513ST	RS0519ST	RC0621ST	RC0628ST
A		5 ⁺⁰		6 ⁺⁰
B	13 ⁺⁰	19 ⁺⁰	18~21	23~27
C	52.4±1.5	73±1.5		76~80
D	5±0.5	10±0.5		10±0.5
E			6±1	
F		3.2 ⁻⁰		4.8 ⁻⁰
G			0.8 ⁻⁰	
H			2.5 ⁻⁰	
I		0.65 \varnothing		0.8 \varnothing
J			1.5 ⁻⁰	

ELECTRICAL PARAMETERS

ITEM	INDUCTANCE L (μH)	TEST FREQ. (MHz)	IDC(mA)
RC0513/RC0519 SERIES			
RC0621/RC0628 SERIES			
RC0513Δ-5R6M-D2	5.6	7.96	0.80
RC0513Δ-6R8M-D2	6.8	7.96	0.80
RC0513Δ-7R5M-D2	7.5	7.96	0.45
RC0513Δ-8R2M-D2	8.2	7.96	0.43
RC0513Δ-100M-D2	10	2.52	0.40
RC0513Δ-120M-D2	12	2.52	0.38
RC0513Δ-150M-D2	15	2.52	0.36
RC0513Δ-180M-D2	18	2.52	0.36
RC0513Δ-220M-D2	22	2.52	0.33
RC0513Δ-270M-D2	27	2.52	0.31
RC0519Δ-5R6M-D2	5.6	7.96	1.30
RC0519Δ-6R8M-D2	6.8	7.96	1.30
RC0519Δ-7R5M-D2	7.5	7.96	1.30
RC0519Δ-8R2M-D2	8.2	7.96	1.30
RC0519Δ-100M-D2	10	2.52	1.30
RC0519Δ-120M-D2	12	2.52	1.30
RC0519Δ-150M-D2	15	2.52	1.00
RC0519Δ-180M-D2	18	2.52	1.00
RC0519Δ-220M-D2	22	2.52	0.90
RC0519Δ-270M-D2	27	2.52	0.50
RC0519Δ-330M-D2	33	2.52	0.50
RC0519Δ-390M-D2	39	2.52	0.30
RC0519Δ-470M-D2	47	2.52	0.30
RC0621Δ-3R3M-D2	3.3	7.96	3.00
RC0621Δ-5R6M-D2	5.6	7.96	3.00
RC0621Δ-6R8M-D2	6.8	7.96	3.00
RC0621Δ-7R5M-D2	7.5	7.96	3.00
RC0621Δ-8R2M-D2	8.2	7.96	3.00
RC0621Δ-100M-D2	10	2.52	3.00
RC0621Δ-120M-D2	12	2.52	2.00
RC0621Δ-150M-D2	15	2.52	2.00
RC0621Δ-180M-D2	18	2.52	1.60
RC0621Δ-220M-D2	22	2.52	1.60
RC0621Δ-270M-D2	27	2.52	0.80
RC0621Δ-330M-D2	33	2.52	0.80
RC0621Δ-390M-D2	39	2.52	0.80
RC0621Δ-470M-D2	47	2.52	0.70
RC0628Δ-5R6M-D2	5.6	7.96	5.00
RC0628Δ-6R8M-D2	6.8	7.96	5.00
RC0628Δ-7R5M-D2	7.5	7.96	5.00
RC0628Δ-8R2M-D2	8.2	7.96	5.00
RC0628Δ-100M-D2	10	2.52	4.00
RC0628Δ-120M-D2	12	2.52	4.00
RC0628Δ-150M-D2	15	2.52	4.00
RC0628Δ-180M-D2	18	2.52	3.00
RC0628Δ-220M-D2	22	2.52	3.00
RC0628Δ-270M-D2	27	2.52	2.00
RC0628Δ-330M-D2	33	2.52	2.00
RC0628Δ-390M-D2	39	2.52	1.20
RC0628Δ-470M-D2	47	2.52	1.20

*Customers' Specifications are Welcome