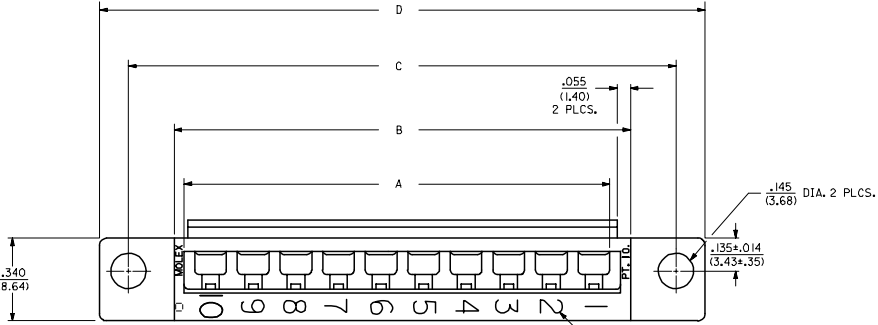


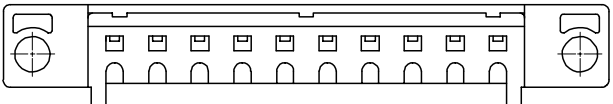
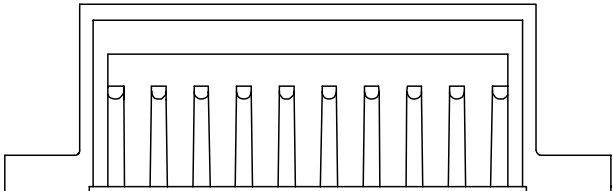
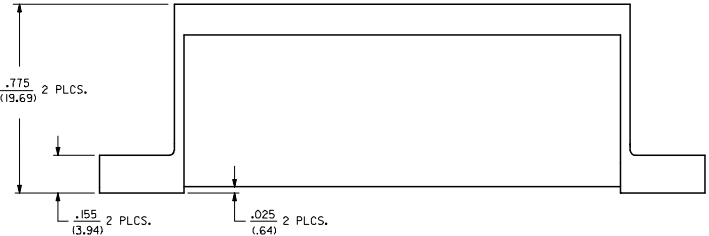
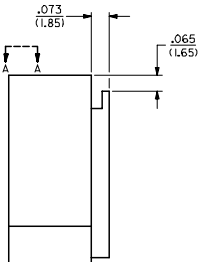
20 19 18 17 16 15 14 13 12 11 10 9 8 7 6 5 4 3 2 1

NOTES:

- △ THESE HOUSINGS ARE FOR USE WITH THE 1457-• TERMINALS AND MAY BE SUBDIVIDED BY USING THE 1461-K KEY.
- △ THE HOUSINGS ARE ONLY AVAILABLE IN 5, 10, 15, AND 20 CIRCUIT SIZES.
- △ PRODUCT SPECIFICATION PS 50-36 APPLIES.
- △ THESE HOUSINGS CONFORM TO U.L. AND C.S.A. REQUIREMENTS.
- △ .060/(1.52) HIGH RAISED NUMERALS.
- △ .125/(3.18) HIGH RECESSED NUMERALS ON A MATTE BACKGROUND.
- △ .09/(2.3) HIGH INK STAMPED NUMERALS.
- B. PACKAGE PER PK-1461-100.



VIEW A-A



| | |
|---------|----|
| 4 | 01 |
| 3 | 0 |
| 2 | 01 |
| 1 | 0 |
| SHT REV | |

| | | | | | | |
|---|--|---|--|--------------|---------------------|--|
| MODIFY CORE OUTS EC NO: UCP2005-2756 DRWNS: BARRA 2005/09/29 CHK: BARKER 2005/10/18 APPR: SHILLER 2005/10/12 | QUALITY SYMBOLS | GENERAL TOLERANCES (UNLESS SPECIFIED) | DIMENSION STYLE | SCALE | DESIGN UNITS | THIRD ANGLE PROJECTION |
| | ▽=0 ▽=0 | mm INCH 4 PLACES ± --- ± --- 3 PLACES ± --- ± .010 2 PLACES ± 0.25 ± .014 1 PLACE ± 0.35 ± --- ANGULAR ± 1/2° | IN/MM DRAWN BY DATE AFG 9/1/02/18 CHECKED BY DATE RHR 9/1/02/18 APPROVED BY DATE GWF 9/1/02/18 | 4:1 | INCH | TITLE HOUSING, COMMONING [.025/(.64) OFFSET] |
| | DRAFT WHERE APPLICABLE MUST REMAIN WITHIN DIMENSIONS | SEE TABLE | MATERIAL NO. | DOCUMENT NO. | MOLEX INCORPORATED | |
| | SIZE D | THIS DRAWING CONTAINS INFORMATION THAT IS PROPRIETARY TO MOLEX INCORPORATED AND SHOULD NOT BE USED WITHOUT WRITTEN PERMISSION | | SD-1461-* | SHEET NO. 1 OF 4 | |

19 18 17 16 15 14 13 12 11 10 9 8 7 6 5 4 3 2 1

| PART NO. | ENG. NO. | NO. CKTS. | DIM. A | DIM. B | DIM. C | DIM. D | SPECIAL NUMBERED HOUSINGS CHART | | | |
|------------|----------|-----------|---------------|---------------|---------------|---------------|---------------------------------|-----------|-----------|------------------|
| | | | | | | | PART NO. | ENG. NO. | NO. CKTS. | CIRCUIT NUMERALS |
| 07-01-7201 | 1461-20 | 20 | 3.50 (88.9) | 3.63 (92.2) | 4.00 (101.6) | 4.24 (107.7) | 07-01-7202 | 1461-20-1 | 20 | 21 THRU 40 |
| 07-01-7151 | 1461-15 | 15 | 2.62 (66.5) | 2.75 (69.9) | 3.13 (79.5) | 3.37 (85.6) | 07-01-7203 | 1461-20-2 | 20 | 41 THRU 60 |
| 07-01-7101 | 1461-10 | 10 | 1.750 (44.45) | 1.875 (47.63) | 2.250 (57.15) | 2.49 (63.2) | 07-01-7204 | 1461-20-3 | 20 | 61 THRU 80 |
| 07-01-7051 | 1461-5 | 5 | .875 (22.23) | 1.000 (25.40) | 1.375 (34.93) | 1.615 (41.02) | | | | |

| PART NO. | ENG. NO. | NO. CKTS. | CIRCUIT NUMERALS |
|------------|-----------|-----------|------------------|
| 07-01-7102 | 1461-10-1 | 10 | 11 THRU 20 |
| 07-01-7103 | 1461-10-2 | 10 | 21 THRU 30 |
| 07-01-7104 | 1461-10-3 | 10 | 31 THRU 40 |
| 07-01-7152 | 1461-15-1 | 15 | 16 THRU 30 |
| 07-01-7153 | 1461-15-2 | 15 | 31 THRU 45 |
| 07-01-7154 | 1461-15-3 | 15 | 46 THRU 60 |

| BEFORE INK STAMP | | AFTER INK STAMP | | NO. CKTS. | DIM. A | DIM. B | DIM. C | DIM. D |
|------------------|----------|-----------------|----------|-----------|--------|--------|--------|--------|
| PART NO. | ENG. NO. | PART NO. | ENG. NO. | | | | | |
| 007-01-7206 | 1461-20B | 007-01-7207 | 1461-20C | 20 | 3.50 | 3.63 | 4.00 | 4.24 |
| 007-01-7156 | 1461-15B | 007-01-7157 | 1461-15C | 15 | 2.62 | 2.75 | 3.13 | 3.37 |
| 007-01-7106 | 1461-10B | 007-01-7107 | 1461-10C | 10 | 1.750 | 1.875 | 2.250 | 2.49 |
| 007-01-7056 | 1461-5B | 007-01-7057 | 1461-5C | 5 | .875 | 1.000 | 1.375 | 1.615 |

| BEFORE INK STAMP | | AFTER INK STAMP | | NO. CKTS. | DIM. A | DIM. B | DIM. C | DIM. D |
|------------------|----------|-----------------|------------|-----------|--------|--------|--------|--------|
| PART NO. | ENG. NO. | PART NO. | ENG. NO. | | | | | |
| 007-01-7206 | 1461-20B | 007-01-7208 | 1461-20-1C | 20 | 3.50 | 3.63 | 4.00 | 4.24 |
| 007-01-7156 | 1461-15B | 007-01-7159 | 1461-15-2C | 15 | 2.62 | 2.75 | 3.13 | 3.37 |
| 007-01-7106 | 1461-10B | 007-01-7160 | 1461-10-3C | 10 | 1.750 | 1.875 | 2.250 | 2.49 |
| 007-01-7056 | 1461-5B | 007-01-7161 | 1461-15-3C | 15 | .875 | 1.000 | 1.375 | 1.615 |

| LINE | REV | DESCRIPTION | DATE | BY | CHKD |
|------|-----|---------------------------|------|----|------|
| 1 | | REVISED TO ADD DIMENSIONS | | | |
| 2 | | REVISED TO ADD DIMENSIONS | | | |
| 3 | | REVISED TO ADD DIMENSIONS | | | |
| 4 | | REVISED TO ADD DIMENSIONS | | | |
| 5 | | REVISED TO ADD DIMENSIONS | | | |
| 6 | | REVISED TO ADD DIMENSIONS | | | |
| 7 | | REVISED TO ADD DIMENSIONS | | | |
| 8 | | REVISED TO ADD DIMENSIONS | | | |
| 9 | | REVISED TO ADD DIMENSIONS | | | |
| 10 | | REVISED TO ADD DIMENSIONS | | | |
| 11 | | REVISED TO ADD DIMENSIONS | | | |
| 12 | | REVISED TO ADD DIMENSIONS | | | |
| 13 | | REVISED TO ADD DIMENSIONS | | | |
| 14 | | REVISED TO ADD DIMENSIONS | | | |
| 15 | | REVISED TO ADD DIMENSIONS | | | |
| 16 | | REVISED TO ADD DIMENSIONS | | | |
| 17 | | REVISED TO ADD DIMENSIONS | | | |
| 18 | | REVISED TO ADD DIMENSIONS | | | |
| 19 | | REVISED TO ADD DIMENSIONS | | | |
| 20 | | REVISED TO ADD DIMENSIONS | | | |

HOUSING, COMMONING
 [1025/1484] (OFF SHEET)
 DATE: 1-20-61
 TIME: 1:02 PM
 DRAWN BY: [Name]
 CHECKED BY: [Name]
 APPROVED BY: [Name]
 TITLE: CHART
 PART NO.: 30-1461
 REV: 01
 DATE: 1-20-61
 TIME: 1:02 PM
 DRAWN BY: [Name]
 CHECKED BY: [Name]
 APPROVED BY: [Name]