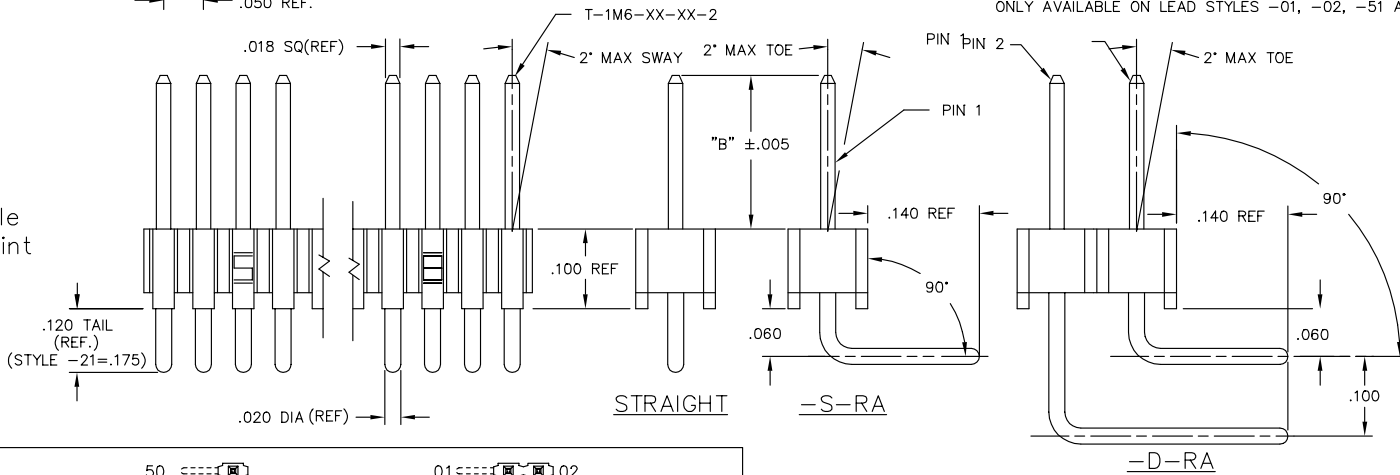
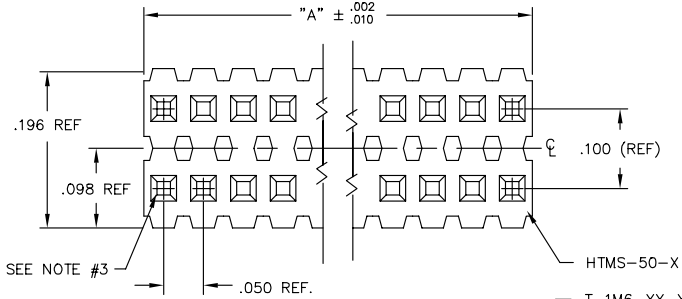
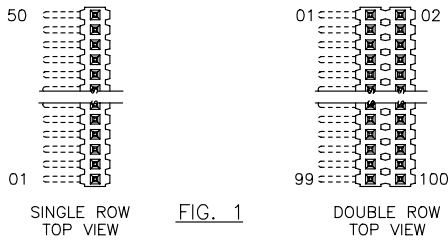


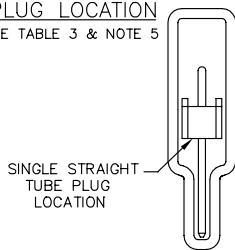
- NOTES:
1. MAX ALLOWABLE BOW: .005 INCH/INCH.
  2. TERMINAL PUSHOUT FORCE: 2 LBS. MIN.
  3. MAX PIN ROTATION IN BODY: 2°.
  4. CUT FLASH .010 MAX
  5. TUBE POSITIONS 8-50 ONLY. POSITIONS 2-7 TO BE BULK PACKAGED.



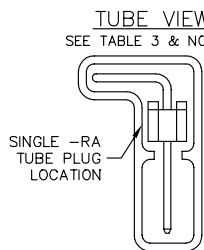
Do not scale from this print



PLUG LOCATION  
SEE TABLE 3 & NOTE 5



TUBE VIEW  
SEE TABLE 3 & NOTE 5



**PROPRIETARY NOTE**  
THIS DOCUMENT CONTAINS INFORMATION CONFIDENTIAL AND PROPRIETARY TO SAMTEC INC. AND SHALL NOT BE REPRODUCED OR TRANSMITTED TO OTHER DOCUMENTS OR DISCLOSED TO OTHERS OR USED FOR ANY PURPOSE OTHER THAN THAT FOR WHICH IT WAS OBTAINED WITHOUT THE EXPRESSED WRITTEN CONSENT OF SAMTEC INC.

DIMENSIONS ARE IN INCHES		UNLESS OTHERWISE NOTED	TOLERANCES ARE:	TITLE:	DWG NO:
ONE PLACE DECIMALS ± .1	THREE PLACE DECIMALS ± .005		ANGLES ± 2°	TERMINAL MICRO STRIP	TMS-1XX-XX-XX-X-XX-XXX
TWO PLACE DECIMALS ± .01	FOUR PLACE DECIMALS ± .0020				SHEET 1 OF 1

TMS-1XX-XX-XX-X-XX-XXX

OPTION  
-POLARIZING SPECIFICATION  
XXX INDICATES POS. TO BE OMITTED  
(SEE FIG. 1)

OPTION  
-RA: RIGHT ANGLE (SEE TABLE 1)  
(SINGLE & DOUBLE RA AVAILABLE  
IN STYLE -01, -02, & -03 ONLY)

BODY SPECIFICATION  
-S: SINGLE (USE HTMS-50-S)  
-D: DOUBLE (USE HTMS-50-D)

PLATING SPECIFICATION  
-G: GOLD, SPECIFY -G IN TERMINAL SUFFIX -XX  
-T: TIN, SPECIFY -T IN TERMINAL SUFFIX -XX  
ONLY AVAILABLE ON LEAD STYLES -01, -02, -51 AND -52.  
-S: SELECTIVE, SPECIFY -S IN TERMINAL SUFFIX -XX  
-F: FLASH GOLD, SPECIFY -F IN TERMINAL SUFFIX -XX  
-H: HEAVY GOLD, SPECIFY -H IN TERMINAL SUFFIX -XX  
-FM: SELECTIVE FLASH GOLD, MATTE TIN REMAINDER SPECIFY -F IN TERMINAL SUFFIX -XX  
-SM: SELECTIVE GOLD, MATTE TIN REMAINDER SPECIFY -S IN TERMINAL SUFFIX -XX  
-TM: MATTE TIN -T IN TERMINAL SUFFIX -XX  
ONLY AVAILABLE ON LEAD STYLES -01, -02, -51 AND -52.

TABLE 2

LENGTH	"L"	CONTACT AREA
-01	.440	.140
-02	.410	.140
-03	.610	.190
-04	.505	.190
-05	.705	.190
-12	.425	.165
-13	.625	.190
-14	.555	.190
-15	.755	.190
-16	.825	.190
-17	.320	.060
-18	.450	.190
-19	.650	.190
-21	.505	.190
-25	.330	.060
-26	.373	.075
-27	.398	.100
-28	1.050	.190

\* REF FOR PIN LENGTH

PACKAGING TUBE TABLE

BODY STYLE	LEAD STYLE	TUBE	PLUG	
TMS-DOUBLE STRAIGHT STYLES	-01,-21, -51,-52	PT-1-24-01-22	TP-03	
	-02	PT-1-24-01-95	TP-03	
	-53	PT-1-24-02-66	TP-03	
	-55,-56	PT-1-24-01-29	TP-24	
	-54	PT-1-24-02-46	TP-03	
	-57	PT-1-24-02-25	TP-03	
	-58,-59	PT-1-24-16-29	TP-07	
	-60	PT-1-24-18-29	TP-07	
	TMS-SINGLE STRAIGHT STYLES	-01	PT-1-24-01-24	TP-24
		-21	PT-1-24-02-29	TP-24
-58,-59,-60		PT-1-24-10-03	TP-33	
-02		PT-1-24-01-12	TP-12	
-51,-52		PT-1-24-01-66	TP-24	
-53,-54, -55,-56		PT-1-24-02-03	TP-24	
TMS-DOUBLE RIGHT ANGLE	-01,-02,-03	PT-1-24-02-66	TP-03	
	TMS-SINGLE RIGHT ANGLE	-01,-02,-03	PT-1-24-01-66	TP-24

TABLE 1

STRAIGHT OPTION		RIGHT ANGLE OPTION			ALL
LEAD STYLE	TERMINAL SPEC.	LEAD STYLE	PIN #1	PIN #2	"B"
-01	T-1M6-18-XX-2	-01	T-1M6-14-XX-2	T-1M6-15-XX-2	.230
-02	T-1M6-17-XX-2	-02	T-1M6-12-XX-2	T-1M6-13-XX-2	.100
-03	N/A	-03	T-1M6-18-XX-2	T-1M6-19-XX-2	.125
-21	T-1M6-21-XX-2	-21	N/A	N/A	.230
-51	T-1M6-02-XX-2	-51	N/A	N/A	.190
-52	T-1M6-12-XX-2	-52	N/A	N/A	.205
-53	T-1M6-04-XX-2	-53	N/A	N/A	.285
-54	T-1M6-14-XX-2	-54	N/A	N/A	.335
-55	T-1M6-03-XX-2	-55	N/A	N/A	.390
-56	T-1M6-13-XX-2	-56	N/A	N/A	.405
-57	T-1M6-19-XX-2	-57	N/A	N/A	.430
-58	T-1M6-05-XX-2	-58	N/A	N/A	.485
-59	T-1M6-15-XX-2	-59	N/A	N/A	.535
-60	T-1M6-16-XX-2	-60	N/A	N/A	.605

MATERIAL:  
BODY:  
LIQUID CRYSTAL POLYMER  
COLOR: BLACK  
TERMINAL:  
PHOSPHOR BRONZE

**samtec** MISCUMTG TMS-MKT

520 PARK EAST BLVD. NEW ALBANY, INDIANA 47151-1147  
PHONE (812) 944-6733 P.O. BOX 1147  
CODE 55322

MADE BY: PURVIS 8-13-87  
CHECKED BY: WILLIAMS 10-21-87  
ENG. APPROVAL

TMS-1XX-XX-XX-X-XX-XXX  
SHEET 1 OF 1