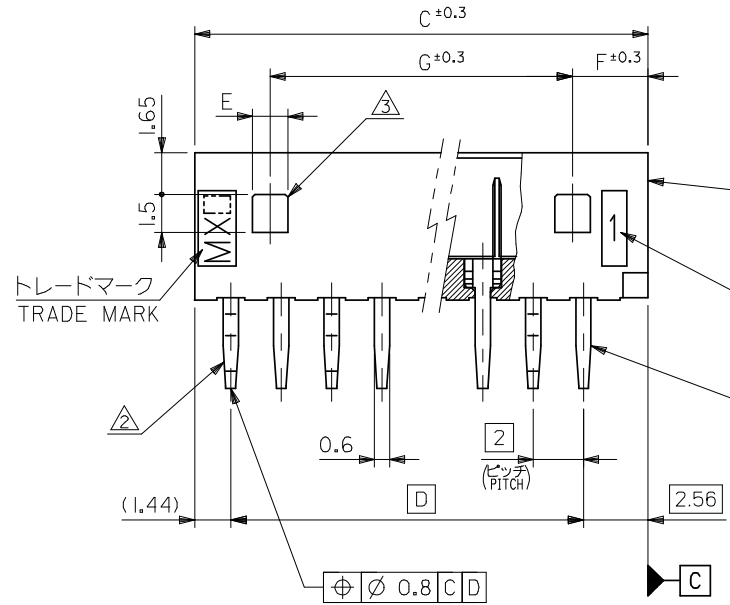
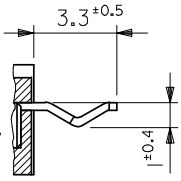


基板取付穴推奨寸法 (参考)
RECOMMENDED P.C. BOARD HOLE DIMENSION (REFERENCE)

注記 NOTES

- 1. 嵌合相手 : 51004-**00
MATES WITH : 51004-**00
- △ 3極以上のキンク加工については、トレードマーク側からキンク、ストレートの順に、1極おきに2箇所以上に施すこと。
KINK TO BE ADDED ON THE ODD NUMBER SOLDER TAILS. (FROM THE TRADE MARK SIDE.)
- △ ロック用の穴は、2極品及び3極品に1ヶ、4極品以上は2ヶとする。
LOCKING HOLE : 1 PLACE FOR 2, 3 CKTS, 2 PLACES FOR 4 CKTS. AND MORE THAN 4 CKTS.

2極品のキンク形態図
KINK FORM FOR 2 CKTS.
両方のテールにキンクを施す。
SOLDER TAIL KINK SHOULD BE ADDED ON BOTH TAILS.



ウエハー
WAFER
(ナイロン66、ガラス入り)
(NYLON66, GLASS FILLED)
UL94V-0

回路番号
CIRCUIT NO.

ピン
PIN
(リン青銅 錫メッキ)
(PHOSPHOR BRONZE,
PRE-TINNED, t=0.32)

26	3	1.4	28	32	31.1	28	53014-1510	15	
24	3	1.4	26	30	29.1	26	-1410	14	
22	3	1.4	24	28	27.1	24	-1310	13	
20	3	1.4	22	26	25.1	22	-1210	12	
18	3	1.4	20	24	23.1	20	-1110	11	
16	3	1.4	18	22	21.1	18	-1010	10	
14	3	1.4	16	20	19.1	16	-0910	9	
12	3	1.4	14	18	17.1	14	-0810	8	
10	3	1.4	12	16	15.1	12	-0710	7	
8	3	1.4	10	14	13.1	10	-0610	6	
6	3	1.4	8	12	11.1	8	-0510	5	
4	3	1.4	6	10	9.1	6	-0410	4	
—#—	4	3.4	4	8	7.1	4	-0310	3	
—#—	3	1.4	2	6	5.1	2	53014-0210	2	
G	F	E	D	C	B	A	PLASTIC BAG	極数 NO. OF CKTS.	
							ORDER No. オーダー番号	53014-**10	MODEL NO.

REVISED EC NO: J2009-0377 DRWN: MWABEJ CHKD: THARUYAMA APPR: NUKITA	2008/08/07	2008/08/18	2008/08/19	DESCRIPTION GENERAL TOLERANCES (UNLESS SPECIFIED)	DIMENSION STYLE MM ONLY	SCALE 5:1	DESIGN UNITS METRIC	THIRD ANGLE PROJECTION	TITLE 2.0 LOW PROFILE WAFER ASSY	
	10 UNDER	±0.2	DRAWN BY M. HENMI							DATE '92/03/06
	10 OVER 30 UNDER	±0.25	CHECKED BY M. FUKUSHIMA							DATE '92/05/28
	30 OVER	±0.3	APPROVED BY M. ENOMOTO							DATE '92/05/28
ANGULAR	±3 °	MATERIAL NO.	DOCUMENT NO.	SEE TABLE	MOLEX INCORPORATED	SD-53014-001	SHEET NO. 1 OF 1			
DRAFT WHERE APPLICABLE MUST REMAIN WITHIN DIMENSIONS	THIS DRAWING CONTAINS INFORMATION THAT IS PROPRIETARY TO MOLEX INCORPORATED AND SHOULD NOT BE USED WITHOUT WRITTEN PERMISSION									