

FEATURES

- ❑ Four 8-bit Registers
- ❑ Implements Double 2-Stage Pipeline or Single 4-Stage Pipeline Register
- ❑ Hold, Shift, and Load Instructions
- ❑ Separate Data In and Data Out Pins
- ❑ High-Speed, Low Power CMOS Technology
- ❑ Three-State Outputs
- ❑ DECC SMD No. 5962-91762
- ❑ Available 100% Screened to MIL-STD-883, Class B
- ❑ Replaces IDT29FCT520/IDT29FCT521 and AMD Am29520/Am29521
- ❑ Package Styles Available:
 - 24-pin Plastic DIP
 - 24-pin Ceramic DIP
 - 28-pin Plastic LCC, J-Lead
 - 28-pin Ceramic LCC
 - 24-pin Ceramic Flatpack
 - 24-pin Plastic SSOP

DESCRIPTION

The L29C520 and L29C521 are pin-for-pin compatible with the IDT29FCT520/IDT29FCT521 and AMD Am29520/Am29521, implemented in low power CMOS.

The L29C520 and L29C521 contain four registers which can be configured as two independent, 2-level pipelines or as one 4-level pipeline.

The Instruction pins, I1-0, control the loading of the registers. For either device, the registers may be configured as a four-stage delay line, with data loaded into R1 and shifted sequentially through R2, R3, and R4. Also, for the L29C520, data may be loaded from the inputs into either R1 or R3 with only R2 or R4 shifting. The L29C521 differs from the L29C520 in that R2 and R4 remain unchanged during this type of data load, as shown in Tables 1 and 2. Finally, I1-0 may be set to prevent any register from changing.

The S1-0 select lines control a 4-to-1 multiplexer which routes the contents of any of the registers to the Y output pins. The independence of the I and S controls allows simultaneous write and read operations on different registers.

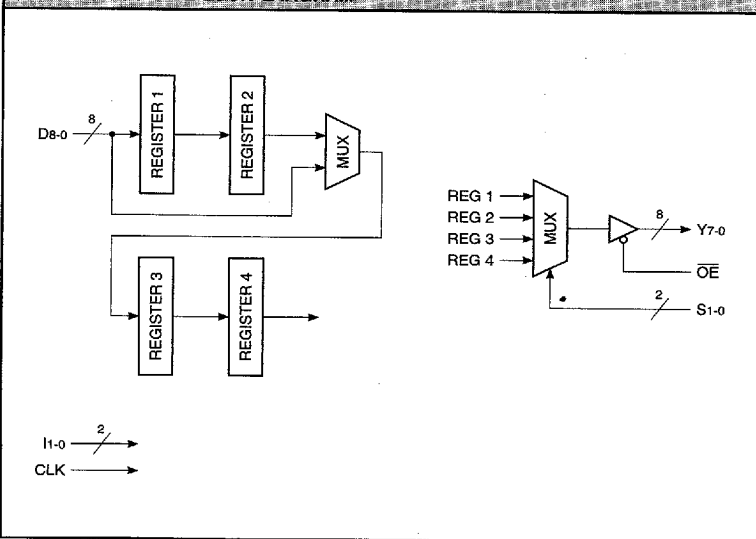
TABLE 1.
L29C520 INSTRUCTION TABLE

I1	I0	Description
L	L	D→R1 R1→R2 R2→R3 R3→R4
L	H	HOLD HOLD D→R3 R3→R4
H	L	D→R1 R1→R2 HOLD HOLD
H	H	ALL REGISTERS ON HOLD

TABLE 2.
L29C521 INSTRUCTION TABLE

I1	I0	Description
L	L	D→R1 R1→R2 R2→R3 R3→R4
L	H	HOLD HOLD D→R3 HOLD
H	L	D→R1 HOLD HOLD HOLD
H	H	ALL REGISTERS ON HOLD

L29C520/521 BLOCK DIAGRAM



5565905 0004066 455

Pipeline Registers

4 x 8-bit Multilevel Pipeline Register

MAXIMUM RATINGS *Above which useful life may be impaired (Notes 1, 2, 3, 8)*

Storage temperature	-65°C to +150°C
Operating ambient temperature	-55°C to +125°C
VCC supply voltage with respect to ground	-0.5 V to +7.0 V
Input signal with respect to ground	-3.0 V to +7.0 V
Signal applied to high impedance output	-3.0 V to +7.0 V
Output current into low outputs	25 mA
Latchup current	> 400 mA

OPERATING CONDITIONS *To meet specified electrical and switching characteristics*

Mode	Temperature Range (Ambient)	Supply Voltage
Active Operation, Commercial	0°C to +70°C	4.75 V ≤ VCC ≤ 5.25 V
Active Operation, Military	-55°C to +125°C	4.50 V ≤ VCC ≤ 5.50 V

ELECTRICAL CHARACTERISTICS *Over Operating Conditions (Note 4)*

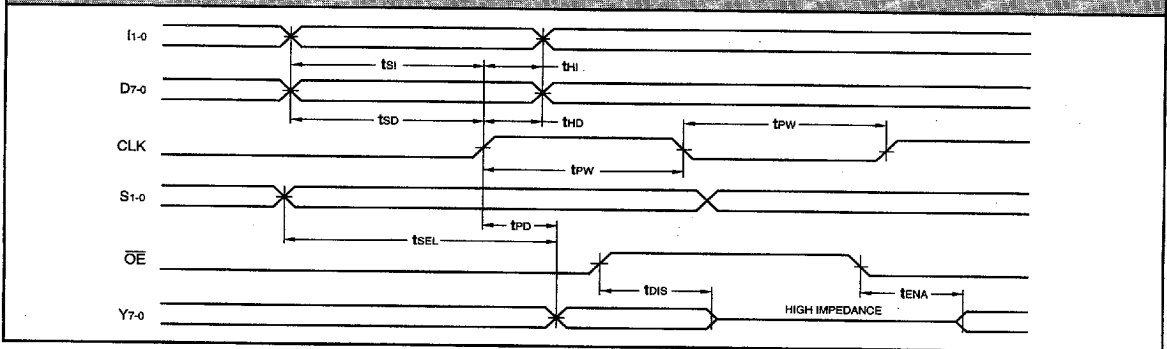
Symbol	Parameter	Test Condition	Min	Typ	Max	Unit
VOH	Output High Voltage	VCC = Min., IOH = -15.0 mA	2.4			V
VOL	Output Low Voltage	VCC = Min., IOL = 24.0 mA			0.5	V
VIH	Input High Voltage		2.0		VCC	V
VIL	Input Low Voltage	(Note 3)	0.0		0.8	V
IIX	Input Current	Ground ≤ VIN ≤ VCC (Note 12)			±20	µA
IOZ	Output Leakage Current	Ground ≤ VOUT ≤ VCC (Note 12)			±20	µA
ICC1	VCC Current, Dynamic	(Notes 5, 6)			30	mA
ICC2	VCC Current, Quiescent	(Note 7)			1.5	mA

SWITCHING CHARACTERISTICS
COMMERCIAL OPERATING RANGE (0°C to +70°C) Notes 9, 10 (ns)

Symbol	Parameter	L29C520/521-			
		22		14	
		Min	Max	Min	Max
t _{PD}	Clock to Output Delay		22		14
t _{SEL}	Select to Output Delay		20		13
t _{PW}	Clock Pulse Width	10		7	
t _{SI}	Instruction Setup Time	10		5	
t _{HI}	Instruction Hold Time	3		1	
t _{SD}	Data Setup Time	10		5	
t _{HD}	Data Hold Time	3		1	
t _{ENA}	Three-State Output Enable Delay (Note 11)		21		15
t _{DIS}	Three-State Output Disable Delay (Note 11)		15		12

MILITARY OPERATING RANGE (-55°C to +125°C) Notes 9, 10 (ns)

Symbol	Parameter	L29C520/521-					
		30		24		16	
		Min	Max	Min	Max	Min	Max
t _{PD}	Clock to Output Delay		30		24		16
t _{SEL}	Select to Output Delay		30		22		15
t _{PW}	Clock Pulse Width	15		10		8	
t _{SI}	Instruction Setup Time	15		10		6	
t _{HI}	Instruction Hold Time	5		3		2	
t _{SD}	Data Setup Time	15		10		6	
t _{HD}	Data Hold Time	5		3		2	
t _{ENA}	Three-State Output Enable Delay (Note 11)		25		22		16
t _{DIS}	Three-State Output Disable Delay (Note 11)		20		16		13

SWITCHING WAVEFORMS


■ 5565905 0004068 228 ■

Pipeline Registers

NOTES

1. Maximum Ratings indicate stress specifications only. Functional operation of these products at values beyond those indicated in the Operating Conditions table is not implied. Exposure to maximum rating conditions for extended periods may affect reliability.

2. The products described by this specification include internal circuitry designed to protect the chip from damaging substrate injection currents and accumulations of static charge. Nevertheless, conventional precautions should be observed during storage, handling, and use of these circuits in order to avoid exposure to excessive electrical stress values.

3. This device provides hard clamping of transient undershoot and overshoot. Input levels below ground or above VCC will be clamped beginning at -0.6 V and $VCC + 0.6$ V. The device can withstand indefinite operation with inputs in the range of -0.5 V to $+7.0$ V. Device operation will not be adversely affected, however, input current levels will be well in excess of 100 mA.

4. Actual test conditions may vary from those designated but operation is guaranteed as specified.

5. Supply current for a given application can be accurately approximated by:

$$\frac{NCV^2F}{4}$$

4

where

- N = total number of device outputs
- C = capacitive load per output
- V = supply voltage
- F = clock frequency

6. Tested with all outputs changing every cycle and no load, at a 5 MHz clock rate.

7. Tested with all inputs within 0.1 V of VCC or Ground, no load.

8. These parameters are guaranteed but not 100% tested.

9. AC specifications are tested with input transition times less than 3 ns, output reference levels of 1.5 V (except t_{DIS} test), and input levels of nominally 0 to 3.0 V. Output loading may be a resistive divider which provides for specified IOH and IOL at an output voltage of VOH min and VOL max respectively. Alternatively, a diode bridge with upper and lower current sources of IOH and IOL respectively, and a balancing voltage of 1.5 V may be used. Parasitic capacitance is 30 pF minimum, and may be distributed.

This device has high-speed outputs capable of large instantaneous current pulses and fast turn-on/turn-off times. As a result, care must be exercised in the testing of this device. The following measures are recommended:

a. A 0.1 μ F ceramic capacitor should be installed between VCC and Ground leads as close to the Device Under Test (DUT) as possible. Similar capacitors should be installed between device VCC and the tester common, and device ground and tester common.

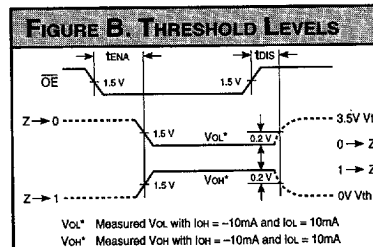
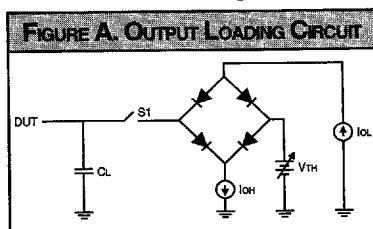
b. Ground and VCC supply planes must be brought directly to the DUT socket or contactor fingers.

c. Input voltages should be adjusted to compensate for inductive ground and VCC noise to maintain required DUT input levels relative to the DUT ground pin.

10. Each parameter is shown as a minimum or maximum value. Input requirements are specified from the point of view of the external system driving the chip. Setup time, for example, is specified as a minimum since the external system must supply at least that much time to meet the worst-case requirements of all parts. Responses from the internal circuitry are specified from the point of view of the device. Output delay, for example, is specified as a maximum since worst-case operation of any device always provides data within that time.

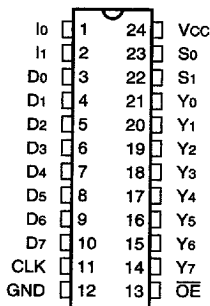
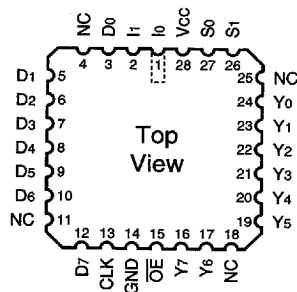
11. For the t_{ENA} test, the transition is measured to the 1.5 V crossing point with datasheet loads. For the t_{DIS} test, the transition is measured to the ± 200 mV level from the measured steady-state output voltage with ± 10 mA loads. The balancing voltage, V_{TH} , is set at 3.5 V for Z-to-0 and 0-to-Z tests, and set at 0 V for Z-to-1 and 1-to-Z tests.

12. These parameters are only tested at the high temperature extreme, which is the worst case for leakage current.



4 x 8-bit Multilevel Pipeline Register

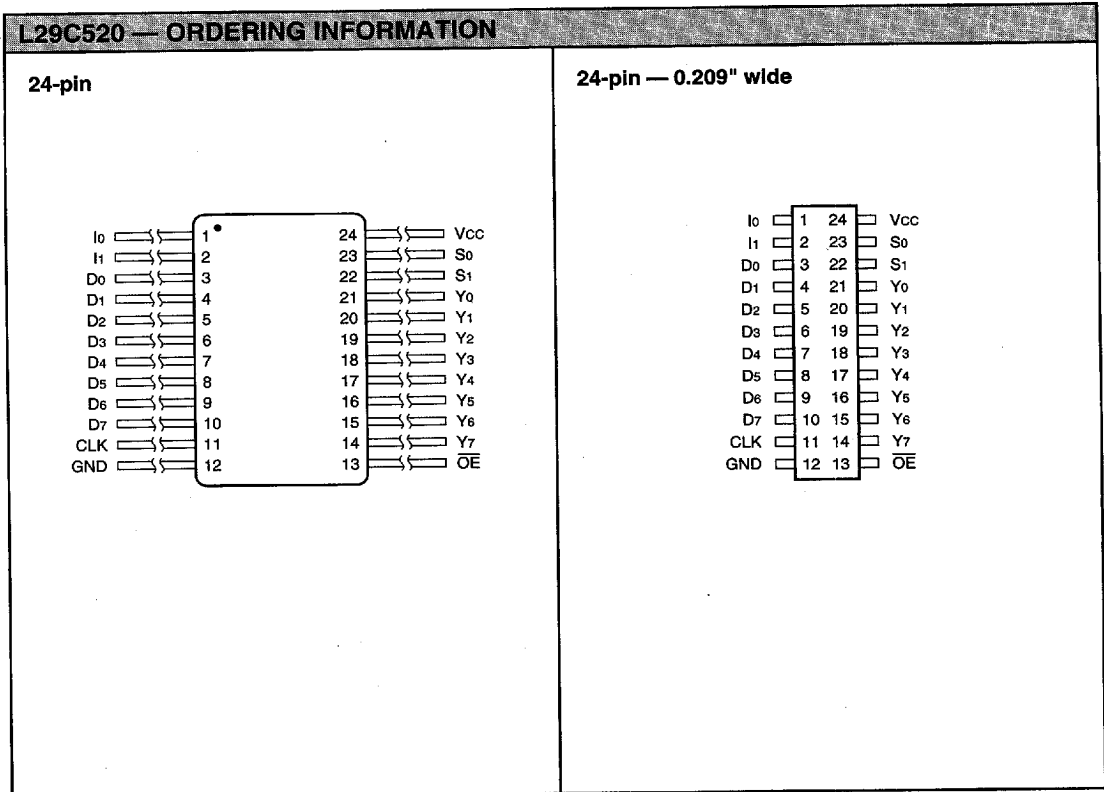
L29C520 — ORDERING INFORMATION

24-pin — 0.3" wide

28-pin


Speed	Plastic DIP (P2)	Ceramic DIP (C1)	Plastic J-Lead Chip Carrier (J4)	Ceramic Leadless Chip Carrier (K1)
0°C to +70°C — COMMERCIAL SCREENING				
22 ns	L29C520PC22	L29C520CC22	L29C520JC22	L29C520KC22
14 ns	L29C520PC14	L29C520CC14	L29C520JC14	L29C520KC14
-55°C to +125°C — COMMERCIAL SCREENING				
30 ns		L29C520CM30		L29C520KM30
24 ns		L29C520CM24		L29C520KM24
16 ns		L29C520CM16		L29C520KM16
-55°C to +125°C — MIL-STD-883 COMPLIANT				
30 ns		L29C520CMB30		L29C520KMB30
24 ns		L29C520CMB24		L29C520KMB24
16 ns		L29C520CMB16		L29C520KMB16

5565905 0004070 986

Pipeline Registers



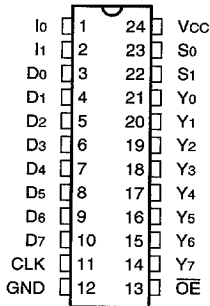
Speed	Ceramic Flatpack (M1)	Plastic SSOP (S1)
	0°C to +70°C — COMMERCIAL SCREENING	
22 ns 14 ns		L29C520SC22 L29C520SC14
	-55°C to +125°C — COMMERCIAL SCREENING	
	-55°C to +125°C — MIL-STD-883 COMPLIANT	
30 ns 24 ns 16 ns	L29C520MMB30 L29C520MMB24 L29C520MMB16	

5565905 0004071 812 Pipeline Registers

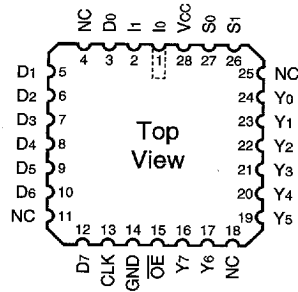
4 x 8-bit Multilevel Pipeline Register

L29C521 — ORDERING INFORMATION

24-pin — 0.3" wide



28-pin



Speed	Plastic DIP (P2)	Ceramic DIP (C1)	Plastic J-Lead Chip Carrier (J4)	Ceramic Leadless Chip Carrier (K1)
0°C to +70°C — COMMERCIAL SCREENING				
22 ns 14 ns	L29C521PC22 L29C521PC14	L29C521CC22 L29C521CC14	L29C521JC22 L29C521JC14	L29C521KC22 L29C521KC14
-55°C to +125°C — COMMERCIAL SCREENING				
30 ns 24 ns 16 ns		L29C521CM30 L29C521CM24 L29C521CM16		L29C521KM30 L29C521KM24 L29C521KM16
-55°C to +125°C — MIL-STD-883 COMPLIANT				
30 ns 24 ns 16 ns		L29C521CMB30 L29C521CMB24 L29C521CMB16		L29C521KMB30 L29C521KMB24 L29C521KMB16

5565905 0004072 759

Pipeline Registers

L29C521 — ORDERING INFORMATION		
<p>24-pin</p> <p>Pinout diagram showing 24 pins:</p> <ul style="list-style-type: none"> Pin 1: VCC Pins 2-12: Data Inputs (I0, I1, D0, D1, D2, D3, D4, D5, D6, D7, CLK, GND) Pins 13-24: Data Outputs (OE, Y7, Y6, Y5, Y4, Y3, Y2, Y1, Y0, S1, S0, VCC) 		
Speed	Ceramic Flatpack (M1)	
	0°C to +70°C — COMMERCIAL SCREENING	
	-55°C to +125°C — COMMERCIAL SCREENING	
	-55°C to +125°C — MIL-STD-883 COMPLIANT	
30 ns 24 ns 16 ns	L29C521MMB30 L29C521MMB24 L29C521MMB16	

5565905 0004073 695 Pipeline Registers