

# Customer Information Sheet

DRAWING No.: M80-898XXXX

IF IN DOUBT - ASK

Ⓒ

NOT TO SCALE

THIRD ANGLE PROJECTION

ALL DIMENSIONS IN mm

BRITISH STANDARD  
ORDER CODE: TO BS9525 F0033

**B5740-1XX-F-C-X**

TOTAL No. OF WAYS: \_\_\_\_\_  
02 TO 07, 17 & 22

FINISH: \_\_\_\_\_  
0 = GOLD CLIP, TIN SHELL  
2 = GOLD CLIP, GOLD SHELL

ORDER CODE:  
**M80-898XXXX**

TOTAL No. OF WAYS: \_\_\_\_\_  
02 - 07, 17 & 22

FINISH \_\_\_\_\_  
01 = GOLD CLIP, TIN SHELL  
05 = GOLD CLIP, GOLD SHELL

**SPECIFICATIONS:**

MATERIAL:  
MOULDING = GLASS-FILLED POLYESTER UL94V-0, BLACK  
CLIP = BERYLLIUM COPPER  
SHELL = COPPER ALLOY

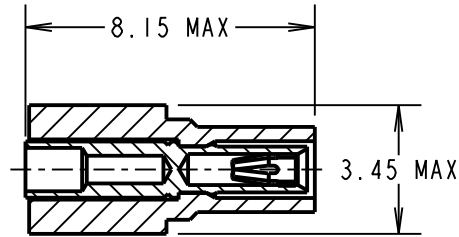
FINISH:  
01 = 0.30µ GOLD CLIP, 4.0µ 100% TIN OVER NICKEL SHELL  
05 = 0.30µ GOLD CLIP, 0.28µ GOLD SHELL

ELECTRICAL:  
CURRENT RATING AT 25°C = 3.0A MAX  
CURRENT RATING AT 85°C = 2.2A MAX  
WORKING VOLTAGE = 120V AC/DC  
VOLTAGE PROOF = 360V AC/DC

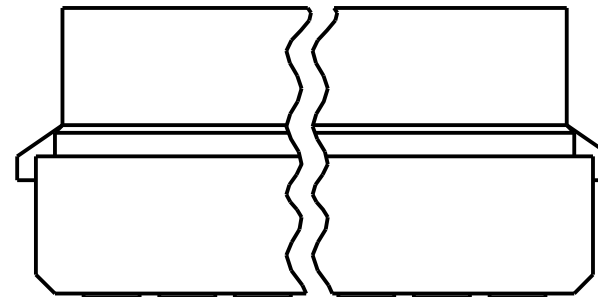
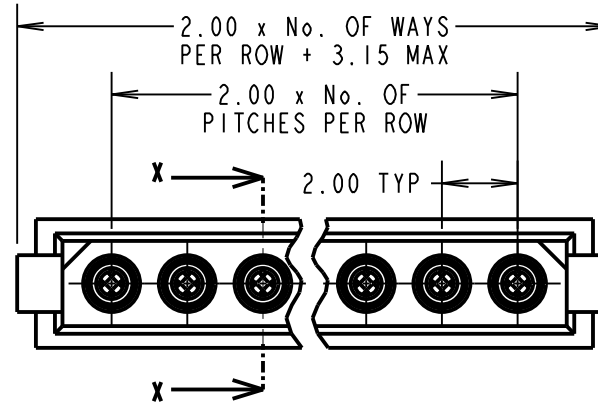
CONTACT RESISTANCE:  
INITIAL: 20mΩ MAX  
AFTER CONDITIONING: 25mΩ MAX  
INSULATION RESISTANCE:  
INITIAL = 1000MΩ MIN  
AFTER CONDITIONING = 100MΩ MIN

MECHANICAL:  
DURABILITY = 500 OPERATIONS  
ENVIRONMENTAL:  
TEMPERATURE RANGE = -55°C TO +125°C  
PACKING = BAG (CONTACTS AND MOULDINGS UN-ASSEMBLED)

FOR COMPLETE SPECIFICATION, SEE COMPONENT SPECIFICATION C005XX (LATEST ISSUE)



SECTION X-X



**NOTES:**

- RECOMMENDED WIRE TYPE = BS3G210 TYPE A, PTFE INSULATED, 24 - 28 AWG. MAX INSULATION DIAMETER = Ø1.10mm. STRIP WIRE BY 2.00mm.
- RECOMMENDED HAND CRIMP TOOL = M2520/2-01 WITH POSITIONER T5747. SEE TOOLING INSTRUCTION SHEET IS-01 FOR COMPLETE CRIMPING INFORMATION.
- CONTACT INSERTION & EXTRACTION TOOL = Z80-280. REFER TO INSTRUCTION SHEET IS-25 FOR ASSEMBLY INSTRUCTIONS.

SM	11	08.08.11	11389
NAME	ISS.	DATE	C/NOTE
APPROVED: S. MCCULLAGH			
CHECKED:		R. ADDE	
DRAWN: W. J. BOURNE			
CUSTOMER REF.:			
ASSEMBLY DRG:			

**HARWIN**

HARWIN USA  
TEL: 603 893 5376  
FAX: 603 893 5396  
mis@harwin.com

HARWIN Europe (UK)  
TEL: 023 9231 4545  
FAX: 023 9231 4590  
mis@harwin.co.uk

HARWIN Asia  
TEL: +65 6 779 4909  
FAX: +65 6 779 3868  
mis@harwin.com.sg

THIS DRAWING AND ANY INFORMATION OR DESCRIPTIVE MATTER SET OUT HEREON ARE CONFIDENTIAL AND COPYRIGHT PROPERTY OF THE HARWIN GROUP AND MUST NOT BE DISCLOSED, LOANED, COPIED OR USED FOR MANUFACTURING, TENDERING OR FOR ANY OTHER PURPOSE WITHOUT THEIR WRITTEN PERMISSION.

TOLERANCES  
X. = ±1mm  
X.X = ±0.25mm  
X.XX = ±0.10mm  
X.XXX = ±0.01mm  
ANGLES = ±5°  
UNLESS STATED

MATERIAL:  
SEE ABOVE

FINISH: SEE ABOVE

S/AREA: mm<sup>2</sup>

TITLE: DATAMATE CRIMP  
SIL SOCKET ASSEMBLY  
SMALL BORE (24 - 28AWG)

DRAWING NUMBER:

**M80-898XXXX**

SHT  
2 OF 2