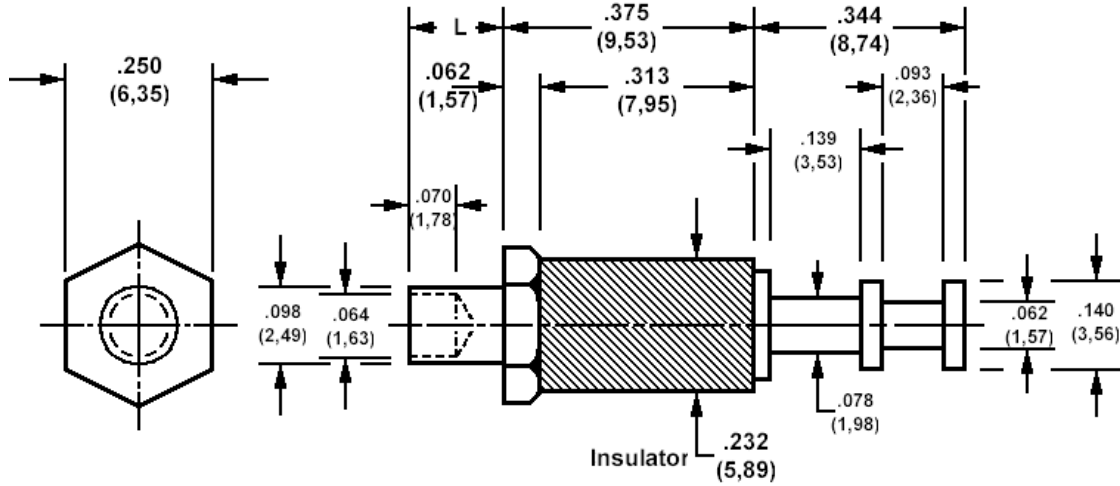


572-4812 Insulated solder terminal, Turreted



How to order code 572-4812-XX-YY-16

Basic Part No (XX = panel thickness, YY = plating finish. See tables for options)

| Basic Part No. | XX | L | For Panel Thickness |
|----------------|-----|-------------|---------------------|
| 572-4812 | -01 | .094 (2,39) | .062 (1,59) |
| | -02 | .125 (3,18) | .094 (2,38) |
| | -03 | .156 (3,96) | .125 (3,18) |
| | -04 | .234 (5,94) | .188 (4,76) |

| Component | Material | Finish _t (YY) | |
|-----------|--------------------------|--------------------------|-------------------------|
| | | -01 | -05 |
| Terminal | Brass | Silver | Electro Solder |
| Stud | Brass | Cadmium (plus chromate) | Cadmium (plus chromate) |
| Insulator | Diallyl Phthalate (blue) | | |

| Additional Specifications | |
|--|------|
| Dielectric Withstanding Voltage (VRMS) | 6000 |

| Recommended Spinning Tools | |
|----------------------------|-------------------|
| Anvil | 435-6805-01-00-00 |
| Tool | 435-6853-01-00-00 |