

**PLEASE CHECK WWW.MOLEX.COM FOR LATEST PART INFORMATION**

**Part Number:** [0026481226](#)  
**Status:** **Active**  
**Description:** 3.96mm (.156") Pitch KK® Header, Breakaway, Right Angle, with Friction Lock, 22 Circuits, Tin (Sn) Plating

**Documents:**

|   |  |
|---|--|
| <a href="#">3D Model</a>                      | <a href="#">Product Specification PS-08-50 (PDF)</a> |
| <a href="#">Packaging Specification (PDF)</a> | <a href="#">RoHS Certificate of Compliance (PDF)</a> |
| <a href="#">Drawing (PDF)</a>                 |  |

**Agency Certification**

|     |         |
|-----|---------|
| CSA | LR19980 |
| UL  | E29179  |

**General**

|                |                       |
|----------------|-----------------------|
| Product Family | PCB Headers           |
| Series         | <a href="#">41672</a> |
| Application    | Wire-to-Board         |
| Product Name   | KK®                   |

**Physical**

|                                |              |
|--------------------------------|--------------|
| Breakaway                      | Yes          |
| Circuits (Loaded)              | 22           |
| Circuits (maximum)             | 22           |
| Color - Resin                  | Black        |
| Durability (mating cycles max) | 25           |
| Flammability                   | 94V-0        |
| Glow-Wire Compliant            | No           |
| Lock to Mating Part            | Yes          |
| Material - Metal               | Brass        |
| Material - Plating Mating      | Tin          |
| Material - Plating Termination | Tin          |
| Material - Resin               | Polyester    |
| Number of Rows                 | 1            |
| Orientation                    | Right Angle  |
| PC Tail Length (in)            | 0.212 In     |
| PC Tail Length (mm)            | 5.38 mm      |
| PCB Locator                    | No           |
| PCB Retention                  | None         |
| PCB Thickness Recommended (in) | 0.062 In     |
| PCB Thickness Recommended (mm) | 1.60 mm      |
| Packaging Type                 | Bag          |
| Pitch - Mating Interface (in)  | 0.156 In     |
| Pitch - Mating Interface (mm)  | 3.96 mm      |
| Plating min: Mating (µin)      | 200          |
| Plating min: Mating (µm)       | 5            |
| Plating min: Termination (µin) | 200          |
| Plating min: Termination (µm)  | 5            |
| Polarized to Mating Part       | No           |
| Polarized to PCB               | Yes          |
| Shrouded                       | No           |
| Stackable                      | No           |
| Temperature Range - Operating  | 0°C to +75°C |
| Termination Interface: Style   | Through Hole |

**Electrical**



*image - Reference only*

Series

**EU RoHS**

**ELV and RoHS Compliant**  
**REACH SVHC Contains SVHC: No**  
**Halogen-Free Status**  
**Not Reviewed**

**China RoHS**



**Need more information on product environmental compliance?**

Email [productcompliance@molex.com](mailto:productcompliance@molex.com)  
 For a multiple part number RoHS Certificate of Compliance, [click here](#)

Please visit the [Contact Us](#) section for any non-product compliance questions.

**Search Parts in this Series**

[41672Series](#)

**Mates With**

[3069](#) , [3215](#) , [2139](#) , [2145](#) , [6442](#) , [7674](#) , [7675](#) , [41695](#) , [41815](#)

|                               |      |
|-------------------------------|------|
| Current - Maximum per Contact | 7A   |
| Voltage - Maximum             | 250V |

**Solder Process Data**

|  |                        |
|--|------------------------|
| Duration at Max. Process Temperature (seconds) | 5                      |
| Lead-free Process Capability                   | Wave Capable (TH only) |
| Max. Cycles at Max. Process Temperature        | 1                      |
| Process Temperature max. C                     | 235                    |

**Material Info**

|                 |                 |
|-----------------|-----------------|
| Old Part Number | A-41672-A22A102 |
|-----------------|-----------------|

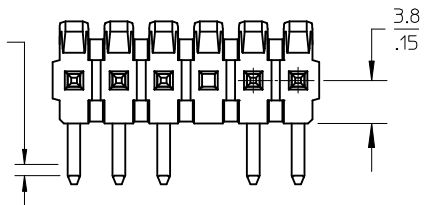
**Reference - Drawing Numbers**

|                       |                            |
|-----------------------|----------------------------|
| Product Specification | PS-08-50                   |
| Sales Drawing         | SD-41672-001, SD-41672-002 |

This document was generated on 03/22/2010

**PLEASE CHECK [WWW.MOLEX.COM](http://WWW.MOLEX.COM) FOR LATEST PART INFORMATION**

CENTERLINE OF PIN IN AREA SHOWN NOT TO VARY FROM CENTERLINE OF PIN AT -D- BY MORE THAN 0.13/.005 IN ANY DIRECTION.



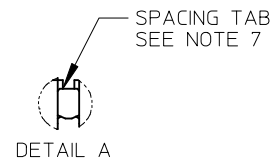
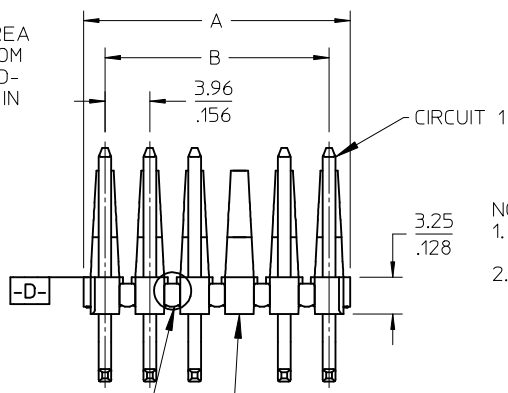
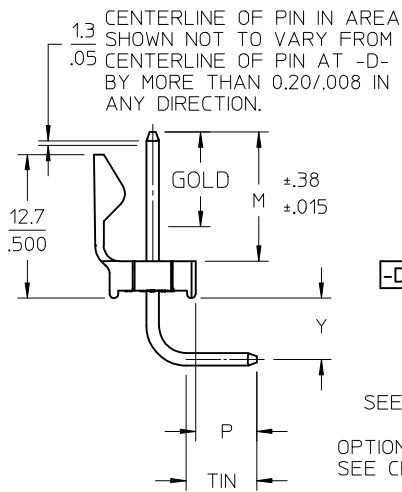
A-41672- \* N \* \*-\*

OPTION - PACKING  
 A= 2161 PIN- BULK PACK  
 B= 43294 PIN- BULK PACK

NO OF CKTS  
 DIM M.L.P  
 PLATING

VOID LOCATIONS  
 BLANK=NO VOIDS  
 NO=CKT NO VOIDED  
 MULT-VOIDS=51 UP

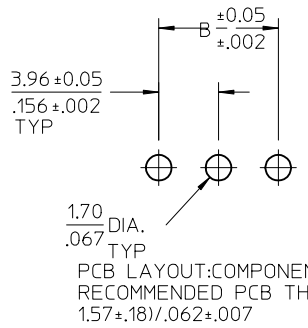
| CIRCUIT | A                          | B              |
|---------|----------------------------|----------------|
| 2       | 6.78/7.87<br>.267/1.310    | 3.96<br>.156   |
| 3       | 10.74/11.84<br>.423/1.466  | 7.92<br>.312   |
| 4       | 14.71/15.80<br>.579/1.622  | 11.89<br>.468  |
| 5       | 18.67/19.76<br>.735/1.778  | 15.85<br>.624  |
| 6       | 22.63/23.72<br>.891/1.934  | 19.81<br>.780  |
| 7       | 26.59/27.69<br>1.047/1.090 | 23.77<br>.936  |
| 8       | 30.56/31.65<br>1.203/1.246 | 27.74<br>1.092 |
| 9       | 34.52/35.61<br>1.359/1.402 | 31.70<br>1.248 |
| 10      | 38.48/39.57<br>1.515/1.558 | 35.66<br>1.404 |
| 11      | 42.44/43.54<br>1.671/1.714 | 39.62<br>1.560 |
| 12      | 46.41/47.50<br>1.827/1.870 | 43.59<br>1.716 |
| 13      | 50.37/51.46<br>1.983/2.026 | 47.55<br>1.872 |
| 14      | 54.33/55.42<br>2.139/2.182 | 51.51<br>2.028 |
| 15      | 58.29/59.39<br>2.295/2.338 | 55.47<br>2.184 |
| 16      | 62.26/63.35<br>2.451/2.494 | 59.44<br>2.340 |
| 17      | 66.22/67.31<br>2.607/2.650 | 63.40<br>2.496 |
| 18      | 70.18/71.27<br>2.763/2.806 | 67.36<br>2.652 |
| 19      | 74.14/75.23<br>2.919/2.962 | 71.32<br>2.808 |
| 20      | 78.11/79.20<br>3.075/3.118 | 75.29<br>2.964 |
| 21      | 82.07/83.16<br>3.231/3.274 | 79.25<br>3.120 |
| 22      | 86.03/87.12<br>3.387/3.430 | 83.21<br>3.276 |
| 23      | 89.94/91.08<br>3.541/3.586 | 87.17<br>3.432 |
| 24      | 93.85/95.00<br>3.695/3.740 | 91.14<br>3.588 |



- NOTES:
- MATERIAL: HEADER: POLYESTER, 94V-0, MOLDED BLACK PIN: BRASS
  - FINISH:
    - (102) OVERALL TIN: 0.00508/.000200 MIN OVER 0.00254/.000100 MIN COPPER.
    - (154) OVERALL TIN: 0.00254/.000100 MIN OVER 0.00127/.000050 MIN NICKEL.
    - (208) SELECT GOLD: 0.00038/.000015 MIN, \*SELECT TIN: 0.00254/.000100 MIN, OVERALL NICKEL UNDERPLATE: 0.00127/.000050 MIN.
    - (228) SELECT GOLD: 0.00076/.000030 MIN, \*SELECT TIN: 0.00254/.000100 MIN, OVERALL NICKEL UNDERPLATE: 0.00127/.000050 MIN.
    - (501) OVERALL GOLD: 0.00051/.000020 MIN OVER 0.00076/.000030 MIN NICKEL.
    - (503) OVERALL GOLD: 0.00076/.000030 MIN OVER 0.00127/.000050 MIN NICKEL.
  - \*THE PRIMARY SHIPPING CARTON WILL BE LABELED "COMPLIANT TO RoHS DIRECTIVE 2002/95/EC AND ELV ANNEX II OF DIRECTIVE 2000/53/EC". CARTONS WITHOUT THIS LABEL MAY CONTAIN PRODUCT WITH TIN/LEAD PLATINGS.
  - PRODUCT SPECIFICATION: PS-08-50.
  - PACKAGING INFORMATION: SEE TABLES
  - SOLDERABILITY: PER SMES-152.
  - PIN PUSH-OUT FORCE: PRIOR TO SOLDERING, A 3 LB. MINIMUM FORCE IN EITHER DIRECTION SHALL BE REQUIRED TO PUSH THE PIN OUT OF THE HEADER.
  - PARTS ARE STACKABLE END TO END ON 3.96/.156 CENTERS.(SPACING TABS MUST BE REMOVED ON CIRCUIT SIZES 1-23 BEFORE PARTS ARE STACKABLE.
  - PARTS WILL CONFORM TO CLASS B REQUIREMENTS OF COSMETIC SPECIFICATION PS-45499-002.

SEE DETAIL A

OPTIONAL VOIDED CKT. SEE CHART FOR LOCATIONS



|       |     |   |             |
|-------|-----|---|-------------|
| 2-*   | AB4 | ADD 41672-0228<br>EC NO: UCP2009-2938<br>DRWN:MK LIPPER 2009/06/12<br>CHKD:SSOUSEK 2009/06/15<br>APPR:FSM TH 2009/06/15 | DESCRIPTION |
| 1     | AB4 |   |             |
| SHEET | REV |   |             |
|       | AB4 | REV   |             |

| QUALITY SYMBOLS |
|-----------------|
| ▽=0             |
| ▽=0             |

| GENERAL TOLERANCES (UNLESS SPECIFIED)                |               |
|--|---------------|
|  | mm INCH       |
| 4 PLACES   | ± --- ± ---   |
| 3 PLACES   | ± --- ± .010  |
| 2 PLACES   | ± 0.25 ± .015 |
| 1 PLACE  | ± 0.38 ± ---  |
| ANGULAR ±1/2°  |               |
| DRAFT WHERE APPLICABLE MUST REMAIN WITHIN DIMENSIONS |               |

| DIMENSION STYLE |          |
|-----------------|----------|
| MM/IN           |          |
| DRAWN BY        | DATE     |
| JSCHAFFER       | 12-5-03  |
| CHECKED BY      | DATE     |
| KSAMIEC         | 12-12-03 |
| APPROVED BY     | DATE     |
| MARGULIS        | 12-16-03 |
| MATERIAL NO.    |          |
| SEE CHART       |          |
| SIZE            |          |
| A               |          |

|   |              |                        |           |
|---|--------------|------------------------|-----------|
| SCALE   | DESIGN UNITS | THIRD ANGLE PROJECTION |           |
| 2:1   | INCH         |                        |           |
| TITLE   |              |                        |           |
| KK .156 HEADER ASSEMBLY<br>FRICTION LOCK BREAKAWAY<br>RIGHT ANGLE   |              |                        |           |
| molex MOLEX INCORPORATED  |              |                        |           |
| DOCUMENT NO.  |              |                        | SHEET NO. |
| SD-41672-001  |              |                        | 1 OF *    |
| THIS DRAWING CONTAINS INFORMATION THAT IS PROPRIETARY TO MOLEX INCORPORATED AND SHOULD NOT BE USED WITHOUT WRITTEN PERMISSION |              |                        |           |

|                |               |
|----------------|---------------|
| Header No:     | 41186-A-AN    |
| Pin No:        | 2161-37(102)  |
| Pin Length L   | 1.100 / 27.90 |
| Mating M       | .450 / 11.43  |
| Gold:          | NA            |
| Bend Height: Y | .213 / 5.41   |
| PC Tail P      | .212 / 5.38   |
| Tin:           | OVERALL       |
| Pack Per       | PK-41672-001  |

|                |               |
|----------------|---------------|
| Header No:     | 41186-A-AN    |
| Pin No:        | 43294-0569    |
| Pin Length L   | 1.100 / 27.90 |
| Mating M       | .450 / 11.43  |
| Gold:          | .270 / 6.86   |
| Bend Height: Y | .213 / 5.41   |
| PC Tail P      | .212 / 5.38   |
| Tin:           | .200 / 5.08   |
| Pack Per       | PK-41672-001  |

|                |               |
|----------------|---------------|
| Header No:     | 41186-A-AN    |
| Pin No:        | 43294-0570    |
| Pin Length L   | 1.100 / 27.90 |
| Mating M       | .450 / 11.43  |
| Gold:          | .270 / 6.86   |
| Bend Height: Y | .213 / 5.41   |
| PC Tail P      | .212 / 5.38   |
| Tin:           | .200 / 5.08   |
| Pack Per       | PK-41672-001  |

|                |               |
|----------------|---------------|
| Header No:     | 41186-A-AN    |
| Pin No:        | 2161-37(501)  |
| Pin Length L   | 1.100 / 27.90 |
| Mating M       | .450 / 11.43  |
| Gold:          | OVERALL       |
| Bend Height: Y | .213 / 5.41   |
| PC Tail P      | .212 / 5.38   |
| Tin:           | NA            |
| Pack Per       | PK-41672-001  |

| Ckts | Material No | Engineer Number |
|------|-------------|-----------------|
| 2    | 026481026   | A-41672-A02A102 |
| 3    | 026481036   | A-41672-A03A102 |
| 4    | 026481046   | A-41672-A04A102 |
| 5    | 026481056   | A-41672-A05A102 |
| 6    | 026481066   | A-41672-A06A102 |
| 7    | 026481076   | A-41672-A07A102 |
| 8    | 026481086   | A-41672-A08A102 |
| 9    | 026481096   | A-41672-A09A102 |
| 10   | 026481106   | A-41672-A10A102 |
| 11   | 026481116   | A-41672-A11A102 |
| 12   | 026481126   | A-41672-A12A102 |
| 13   | 026481136   | A-41672-A13A102 |
| 14   | 026481146   | A-41672-A14A102 |
| 15   | 026481156   | A-41672-A15A102 |
| 16   | 026481166   | A-41672-A16A102 |
| 17   | 026481176   | A-41672-A17A102 |
| 18   | 026481186   | A-41672-A18A102 |
| 19   | 026481196   | A-41672-A19A102 |
| 20   | 026481206   | A-41672-A20A102 |
| 21   | 026481216   | A-41672-A21A102 |
| 22   | 026481226   | A-41672-A22A102 |
| 23   | 026481236   | A-41672-A23A102 |
| 24   | 026481246   | A-41672-A24A102 |

| Material No | Engineer Number |
|-------------|-----------------|
| 41672-0001  | A-41672-B02A208 |
| 41672-0002  | A-41672-B03A208 |
| 41672-0003  | A-41672-B04A208 |
| 41672-0004  | A-41672-B05A208 |
| 41672-0005  | A-41672-B06A208 |
| 41672-0006  | A-41672-B07A208 |
| 41672-0007  | A-41672-B08A208 |
| 41672-0008  | A-41672-B09A208 |
| 41672-0009  | A-41672-B10A208 |
| 41672-0010  | A-41672-B11A208 |
| 41672-0011  | A-41672-B12A208 |
| 41672-0012  | A-41672-B13A208 |
| 41672-0013  | A-41672-B14A208 |
| 41672-0014  | A-41672-B15A208 |
| 41672-0015  | A-41672-B16A208 |
| 41672-0016  | A-41672-B17A208 |
| 41672-0017  | A-41672-B18A208 |
| 41672-0018  | A-41672-B19A208 |
| 41672-0019  | A-41672-B20A208 |
| 41672-0020  | A-41672-B21A208 |
| 41672-0021  | A-41672-B22A208 |
| 41672-0022  | A-41672-B23A208 |
| 41672-0023  | A-41672-B24A208 |

| Material No | Engineer Number |
|-------------|-----------------|
| 41672-0024  | A-41672-B02A228 |
| 41672-0025  | A-41672-B03A228 |
| 41672-0026  | A-41672-B04A228 |
| 41672-0027  | A-41672-B05A228 |
| 41672-0028  | A-41672-B06A228 |
| 41672-0029  | A-41672-B07A228 |
| 41672-0030  | A-41672-B08A228 |
| 41672-0031  | A-41672-B09A228 |
| 41672-0032  | A-41672-B10A228 |
| 41672-0033  | A-41672-B11A228 |
| 41672-0034  | A-41672-B12A228 |
| 41672-0035  | A-41672-B13A228 |
| 41672-0036  | A-41672-B14A228 |
| 41672-0037  | A-41672-B15A228 |
| 41672-0038  | A-41672-B16A228 |
| 41672-0039  | A-41672-B17A228 |
| 41672-0040  | A-41672-B18A228 |
| 41672-0041  | A-41672-B19A228 |
| 41672-0042  | A-41672-B20A228 |
| 41672-0043  | A-41672-B21A228 |
| 41672-0044  | A-41672-B22A228 |
| 41672-0045  | A-41672-B23A228 |
| 41672-0046  | A-41672-B24A228 |

| Material No | Engineer Number |
|-------------|-----------------|
| 026482026   | A-41672-A02A501 |
| 026482036   | A-41672-A03A501 |
| 026482046   | A-41672-A04A501 |
| 026482056   | A-41672-A05A501 |
| 026482066   | A-41672-A06A501 |
| 026482076   | A-41672-A07A501 |
| 026482086   | A-41672-A08A501 |
| 026482096   | A-41672-A09A501 |
| 026482106   | A-41672-A10A501 |
| 026482116   | A-41672-A11A501 |
| 026482126   | A-41672-A12A501 |
| 026482136   | A-41672-A13A501 |
| 026482146   | A-41672-A14A501 |
| 026482156   | A-41672-A15A501 |
| 026482166   | A-41672-A16A501 |
| 026482176   | A-41672-A17A501 |
| 026482186   | A-41672-A18A501 |
| 026482196   | A-41672-A19A501 |
| 026482206   | A-41672-A20A501 |
| 026482216   | A-41672-A21A501 |
| 026482226   | A-41672-A22A501 |
| 026482236   | A-41672-A23A501 |
| 026482246   | A-41672-A24A501 |

|                       |      |                             |                |   |              |
|-----------------------|------|-----------------------------|----------------|---|--------------|
| <b>AB4</b>            | REV: | ECR/ECN INFORMATION:        | TITLE:         | <b>KK 156 HEADER ASSEMBLY<br/>FRICTION LOCK BREAKAWAY<br/>RIGHT ANGLE</b> | SHEET No.    |
|                       |      | EC No.: <b>UCP2009-2938</b> |                |   | <b>- 2 -</b> |
|                       |      | DATE: <b>6/15/2009</b>      |                |   |              |
| DOCUMENT NUMBER:      |      | CREATED / REVISED BY:       | CHECKED BY:    | APPROVED BY:  |              |
| <b>SD- 41672 -001</b> |      | <b>MKIPPER</b>              | <b>SSOUSEK</b> | <b>FSMITH</b>   |              |



|                |               |
|----------------|---------------|
| Header No:     | 41186-A-AN    |
| Pin No:        | 2161-96(501)  |
| Pin Length L   | 1.531 / 38.89 |
| Mating M       | .500 / 12.70  |
| Gold:          | OVERALL       |
| Bend Height: Y | .213 / 5.41   |
| PC Tail P      | .592 / 15.04  |
| Tin:           | NA            |
| Pack Per       | PK-41672-001  |

|                |               |
|----------------|---------------|
| Header No:     | 41186-A-AN    |
| Pin No:        | 2161-37(501)  |
| Pin Length L   | 1.100 / 27.90 |
| Mating M       | .523 / 13.28  |
| Gold:          | OVERALL       |
| Bend Height: Y | .213 / 5.41   |
| PC Tail P      | .136 / 3.45   |
| Tin:           | NA            |
| Pack Per       | PK-41672-001  |

|                |                |
|----------------|----------------|
| Header No:     | 41186-A-AN     |
| Pin No:        | 2161-19(102)   |
| Pin Length L   | 1.032 / 26.21  |
| Mating M       | .458/11.63 REF |
| Gold:          | NA             |
| Bend Height: Y | .221 / 5.61    |
| PC Tail P      | .125+- .015    |
| Tin:           | OVERALL        |
| Pack Per       | PK-41672-001   |

|                |               |
|----------------|---------------|
| Header No:     | 41186-A-AN    |
| Pin No:        | 2161-19(102)  |
| Pin Length L   | 1.032 / 26.21 |
| Mating M       | .461 / 11.71  |
| Gold:          | NA            |
| Bend Height: Y | .213 / 5.41   |
| PC Tail P      | .130 / 3.30   |
| Tin:           | OVERALL       |
| Pack Per       | PK-41672-001  |

| Ckts | Material No | Engineer Number | Material No | Engineer Number | Material No | Engineer Number | Material No | Engineer Number |
|------|-------------|-----------------|-------------|-----------------|-------------|-----------------|-------------|-----------------|
| 2    | 41672-0109  | A-41672-A02D501 | 026586020   | A-41672-A02C501 | 026482029   | A-41672-A02E102 | 41672-0151  | A-41672-A02F102 |
| 3    | 41672-0110  | A-41672-A03D501 | 026586030   | A-41672-A03C501 | 026482039   | A-41672-A03E102 | 41672-0152  | A-41672-A03F102 |
| 4    | 41672-0111  | A-41672-A04D501 | 41672-0131  | A-41672-A04C501 | 026482049   | A-41672-A04E102 | 41672-0153  | A-41672-A04F102 |
| 5    | 41672-0112  | A-41672-A05D501 | 41672-0132  | A-41672-A05C501 | 026482059   | A-41672-A05E102 | 41672-0154  | A-41672-A05F102 |
| 6    | 41672-0113  | A-41672-A06D501 | 41672-0133  | A-41672-A06C501 | 026482069   | A-41672-A06E102 | 41672-0155  | A-41672-A06F102 |
| 7    | 41672-0114  | A-41672-A07D501 | 41672-0134  | A-41672-A07C501 | 026482079   | A-41672-A07E102 | 41672-0156  | A-41672-A07F102 |
| 8    | 41672-0115  | A-41672-A08D501 | 026586080   | A-41672-A08C501 | 026482089   | A-41672-A08E102 | 41672-0157  | A-41672-A08F102 |
| 9    | 41672-0116  | A-41672-A09D501 | 41672-0135  | A-41672-A09C501 | 026482099   | A-41672-A09E102 | 41672-0158  | A-41672-A09F102 |
| 10   | 41672-0117  | A-41672-A10D501 | 41672-0136  | A-41672-A10C501 | 026482109   | A-41672-A10E102 | 41672-0159  | A-41672-A10F102 |
| 11   | 41672-0118  | A-41672-A11D501 | 41672-0137  | A-41672-A11C501 | 026482119   | A-41672-A11E102 | 41672-0160  | A-41672-A11F102 |
| 12   | 41672-0119  | A-41672-A12D501 | 41672-0138  | A-41672-A12C501 | 026482129   | A-41672-A12E102 | 41672-0161  | A-41672-A12F102 |
| 13   | 41672-0120  | A-41672-A13D501 | 41672-0139  | A-41672-A13C501 | 026482139   | A-41672-A13E102 | 41672-0162  | A-41672-A13F102 |
| 14   | 41672-0121  | A-41672-A14D501 | 41672-0140  | A-41672-A14C501 | 026482149   | A-41672-A14E102 | 41672-0163  | A-41672-A14F102 |
| 15   | 41672-0122  | A-41672-A15D501 | 41672-0141  | A-41672-A15C501 | 026482159   | A-41672-A15E102 | 41672-0164  | A-41672-A15F102 |
| 16   | 41672-0123  | A-41672-A16D501 | 41672-0142  | A-41672-A16C501 | 026482169   | A-41672-A16E102 | 41672-0165  | A-41672-A16F102 |
| 17   | 41672-0124  | A-41672-A17D501 | 41672-0143  | A-41672-A17C501 | 026482179   | A-41672-A17E102 | 41672-0166  | A-41672-A17F102 |
| 18   | 41672-0125  | A-41672-A18D501 | 41672-0144  | A-41672-A18C501 | 026482189   | A-41672-A18E102 | 41672-0167  | A-41672-A18F102 |
| 19   | 41672-0126  | A-41672-A19D501 | 41672-0145  | A-41672-A19C501 | 026482199   | A-41672-A19E102 | 41672-0168  | A-41672-A19F102 |
| 20   | 41672-0127  | A-41672-A20D501 | 41672-0146  | A-41672-A20C501 | 026482209   | A-41672-A20E102 | 41672-0169  | A-41672-A20F102 |
| 21   | 41672-0128  | A-41672-A21D501 | 41672-0147  | A-41672-A21C501 | 026482219   | A-41672-A21E102 | 41672-0170  | A-41672-A21F102 |
| 22   | 41672-0129  | A-41672-A22D501 | 41672-0148  | A-41672-A22C501 | 026482229   | A-41672-A22E102 | 41672-0171  | A-41672-A22F102 |
| 23   | 41672-0130  | A-41672-A23D501 | 41672-0149  | A-41672-A23C501 | 026482239   | A-41672-A23E102 | 41672-0172  | A-41672-A23F102 |
| 24   | 026586242   | A-41672-A24D501 | 41672-0150  | A-41672-A24C501 | 026482249   | A-41672-A24E102 | 41672-0173  | A-41672-A24F102 |

|  |  |  |                                      |
|--|--|--|--------------------------------------|
| <b>REV:</b><br><b>AB4</b>                        | <u>ECR/ECN INFORMATION:</u>                    | <u>TITLE:</u><br><b>KK 156 HEADER ASSEMBLY<br/>FRICTION LOCK BREAKAWAY<br/>RIGHT ANGLE</b> | <u>SHEET No.</u><br><b>- 4 -</b>     |
|  | <u>EC No.:</u> <b>UCP2009-2938</b>             |  |                                      |
|  | <u>DATE:</u> <b>6/15/2009</b>                  |  |                                      |
| <u>DOCUMENT NUMBER:</u><br><b>SD- 41672 -001</b> | <u>CREATED / REVISED BY:</u><br><b>MKIPPER</b> | <u>CHECKED BY:</u><br><b>SSOUSEK</b>   | <u>APPROVED BY:</u><br><b>FSMITH</b> |

|                |               |
|----------------|---------------|
| Header No:     | 41186-A-AN    |
| Pin No:        | 2161-52(102)  |
| Pin Length L   | 1.063 / 27.00 |
| Mating M       | .450 / 11.43  |
| Gold:          | NA            |
| Bend Height: Y | .213 / 5.41   |
| PC Tail P      | .172 / 4.69   |
| Tin:           | OVERALL       |
| Pack Per       | PK-41672-001  |

|                |               |
|----------------|---------------|
| Header No:     | 41186-A-AN    |
| Pin No:        | 2161-37(102)  |
| Pin Length L   | 1.100 / 27.90 |
| Mating M       | .450 / 11.43  |
| Gold:          | NA            |
| Bend Height: Y | .213 / 5.41   |
| PC Tail P      | .212 / 5.38   |
| Tin:           | OVERALL       |
| Pack Per       | PK-41672-001  |

|                |               |
|----------------|---------------|
| Header No:     | 41186-A-AN    |
| Pin No:        | 2161-37(501)  |
| Pin Length L   | 1.100 / 27.90 |
| Mating M       | .450 / 11.43  |
| Gold:          | OVERALL       |
| Bend Height: Y | .213 / 5.41   |
| PC Tail P      | .212 / 5.38   |
| Tin:           | NA            |
| Pack Per       | PK-41672-001  |

| Ckts | Material No | Engineer Number |
|------|-------------|-----------------|
| 2    | 41672-0176  | A-41672-A02G102 |
| 3    | 41672-0177  | A-41672-A03G102 |
| 4    | 41672-0178  | A-41672-A04G102 |
| 5    | 41672-0179  | A-41672-A05G102 |
| 6    | 41672-0180  | A-41672-A06G102 |
| 7    | 41672-0181  | A-41672-A07G102 |
| 8    | 41672-0182  | A-41672-A08G102 |
| 9    | 41672-0183  | A-41672-A09G102 |
| 10   | 41672-0184  | A-41672-A10G102 |
| 11   | 41672-0185  | A-41672-A11G102 |
| 12   | 41672-0186  | A-41672-A12G102 |
| 13   | 41672-0187  | A-41672-A13G102 |
| 14   | 41672-0188  | A-41672-A14G102 |
| 15   | 41672-0189  | A-41672-A15G102 |
| 16   | 41672-0190  | A-41672-A16G102 |
| 17   | 41672-0191  | A-41672-A17G102 |
| 18   | 41672-0192  | A-41672-A18G102 |
| 19   | 41672-0193  | A-41672-A19G102 |
| 20   | 41672-0194  | A-41672-A20G102 |
| 21   | 41672-0195  | A-41672-A21G102 |
| 22   | 41672-0196  | A-41672-A22G102 |
| 23   | 41672-0197  | A-41672-A23G102 |
| 24   | 41672-0198  | A-41672-A24G102 |

| Material No | Engineer Number    | Void            |
|-------------|--------------------|-----------------|
| 026504051   | A-41672-A05A102-51 | 2,4             |
| 41672-0047  | A-41672-A02A102-1  | 1               |
| 41672-0174  | A-41672-A23A102-51 | 18,20<br>.22    |
| 026504042   | A-41672-A04A102-02 | 2               |
| 026504061   | A-41672-A06A102-4  | 4               |
| 026504043   | A-41672-A04A102-3  | 3               |
| 026504062   | A-41672-A06A102-5  | 5               |
| 416720048   | A-41672-A09A102-51 | 2,3,4,<br>6,7,8 |
| 416720049   | A-41672-A14A102-12 | 12              |
| 026504102   | A-41672-A10A102-5  | 5               |
| 026504072   | A-41672-A07A102-2  | 2               |
| 41672-0175  | A-41672-A11A102-2  | 2               |
| 41672-0203  | A-41672-A14A102-51 | 2,6,<br>11,13   |
| 41672-0227  | A-41672-A05A102-2  | 2               |

| Material No | Engineer Number    | Void |
|-------------|--------------------|------|
| 026504121   | A-41672-A12A501-51 | 4,6  |
| 026497063   | A-41672-A06A501-5  | 5    |

|  |  |   |                                      |
|--|--|---|--------------------------------------|
| <b>REV:</b><br><br><b>AB4</b>                    | <b>ECR/ECN INFORMATION:</b>                    | <b>TITLE:</b><br><br>KK 156 HEADER ASSEMBLY<br>FRICTION LOCK BREAKAWAY<br>RIGHT ANGLE | <b>SHEET No.</b>                     |
|  | EC No.: <b>UCP2009-2938</b>                    |   | <b>- 5 -</b>                         |
|  | DATE: <b>6/15/2009</b>                         |   |                                      |
| <b>DOCUMENT NUMBER:</b><br><b>SD- 41672 -001</b> | <b>CREATED / REVISED BY:</b><br><b>MKIPPER</b> | <b>CHECKED BY:</b><br><b>SSOUSEK</b>  | <b>APPROVED BY:</b><br><b>FSMITH</b> |









6

5

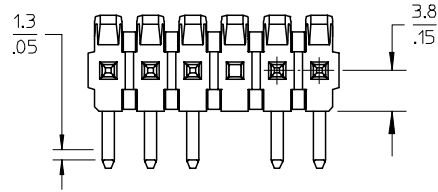
4

3

2

1

CENTERLINE OF PIN IN AREA SHOWN NOT TO VARY FROM CENTERLINE OF PIN AT -D- BY MORE THAN 0.13/.005 IN ANY DIRECTION.



A-41681- \* N \* \* \* \*  
 OPTION - PACKING  
 A=BRASS - BULK PACK  
 B=BRASS - TUBE PACK  
 NO OF CKTS  
 DIM M.L.P  
 PLATING  
 VOID LOCATIONS  
 BLANK=NO VOIDS  
 NO=CKT NO VOIDED  
 MULT-VOIDS=51 UP

CENTERLINE OF PIN IN AREA SHOWN NOT TO VARY FROM CENTERLINE OF PIN AT -D- BY MORE THAN 0.20/.008 IN ANY DIRECTION.

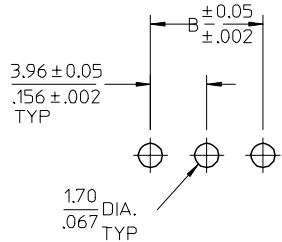


OPTIONAL VOIDED CKT. SEE CHART FOR LOCATIONS

NOTES:

- MATERIAL: HEADER: POLYESTER, 94V-0, MOLDED BLACK
- FINISH:  
 (228) SELECT GOLD: 0.00076/.000030 MIN.  
 \*SELECT TIN: 0.00254/.000100 MIN.  
 OVERALL NICKEL UNDERPLATE: 0.00127/.000050 MIN.  
 \*THE PRIMARY SHIPPING CARTON WILL BE LABELED "COMPLIANT TO ROHS DIRECTIVE 2002/95/EC AND ELV ANNEX II OF DIRECTIVE 2000/53/EC". CARTONS WITHOUT THIS LABEL MAY CONTAIN PRODUCT WITH TIN/LEAD PLATINGS.
- PRODUCT SPECIFICATION: PS-08-50.
- PACKAGING INFORMATION: SEE CHARTS
- SOLDERABILITY: PER SMES-152.
- PIN PUSH-OUT FORCE: PRIOR TO SOLDERING, A 3 LB. MINIMUM FORCE IN EITHER DIRECTION SHALL BE REQUIRED TO PUSH THE PIN OUT OF THE HEADER.
- PARTS ARE STACKABLE END TO END ON 3.96/.156 CENTERS.(SPACING TABS MUST BE REMOVED ON CIRCUIT SIZES 1-23 BEFORE PARTS ARE STACKABLE.

| CIRCUIT | A                          | B              |
|---------|----------------------------|----------------|
| 2       | 6.78/7.87<br>.267/.310     | 3.96<br>.156   |
| 3       | 10.74/11.84<br>.423/.466   | 7.92<br>.312   |
| 4       | 14.71/15.80<br>.579/.622   | 11.89<br>.468  |
| 5       | 18.67/19.76<br>.735/.778   | 15.85<br>.624  |
| 6       | 22.63/23.72<br>.891/.934   | 19.81<br>.780  |
| 7       | 26.59/27.69<br>1.047/1.090 | 23.77<br>.936  |
| 8       | 30.56/31.65<br>1.203/1.246 | 27.74<br>1.092 |
| 9       | 34.52/35.61<br>1.359/1.402 | 31.70<br>1.248 |
| 10      | 38.48/39.57<br>1.515/1.558 | 35.66<br>1.404 |
| 11      | 42.44/43.54<br>1.671/1.714 | 39.62<br>1.560 |
| 12      | 46.41/47.50<br>1.827/1.870 | 43.59<br>1.716 |
| 13      | 50.37/51.46<br>1.983/2.026 | 47.55<br>1.872 |
| 14      | 54.33/55.42<br>2.139/2.182 | 51.51<br>2.028 |
| 15      | 58.29/59.39<br>2.295/2.338 | 55.47<br>2.184 |
| 16      | 62.26/63.35<br>2.451/2.494 | 59.44<br>2.340 |
| 17      | 66.22/67.31<br>2.607/2.650 | 63.40<br>2.496 |
| 18      | 70.18/71.27<br>2.763/2.806 | 67.36<br>2.652 |
| 19      | 74.14/75.23<br>2.919/2.962 | 71.32<br>2.808 |
| 20      | 78.11/79.20<br>3.075/3.118 | 75.29<br>2.964 |
| 21      | 82.07/83.16<br>3.231/3.274 | 79.25<br>3.120 |
| 22      | 86.03/87.12<br>3.387/3.430 | 83.21<br>3.276 |
| 23      | 89.94/91.08<br>3.541/3.586 | 87.17<br>3.432 |
| 24      | 93.85/95.00<br>3.695/3.740 | 91.14<br>3.588 |



PCB LAYOUT: COMPONENT SIDE  
 RECOMMENDED PCB THICKNESS:  
 (1.57 ± .18) / .062 ± .007

|   |                 |             |
|---|-----------------|-------------|
| ADD DIMENSION<br>EC NO: UCP2006-2296<br>DRWN: PR IDDER 2006/04/27<br>CHKD: ADERR 2006/04/28<br>APPR: F SMITH 2006/04/28 | QUALITY SYMBOLS | DESCRIPTION |
|   | ▼=0             |             |
|   | ▽=0             |             |
|   | REV             |             |

|  |                       |        |
|--|-----------------------|--------|
| GENERAL TOLERANCES (UNLESS SPECIFIED)                | DIMENSION STYLE MM/IN |        |
|  | mm                    | INCH   |
| 4 PLACES   | ± ---                 | ± ---  |
| 3 PLACES   | ± ---                 | ± .010 |
| 2 PLACES   | ± 0.25                | ± .015 |
| 1 PLACE  | ± 0.38                | ± ---  |
| ANGULAR ± 1/2°                                       |                       |        |
| DRAFT WHERE APPLICABLE MUST REMAIN WITHIN DIMENSIONS |                       |        |

|                           |                  |
|---------------------------|------------------|
| DRAWN BY<br>JSCHAFFER     | DATE<br>12-5-03  |
| CHECKED BY<br>KSAMIEC     | DATE<br>12-12-03 |
| APPROVED BY<br>MARGULIS   | DATE<br>12-16-03 |
| MATERIAL NO.<br>SEE CHART |                  |
| SIZE<br>A                 |                  |

|   |                      |                        |
|---|----------------------|------------------------|
| SCALE<br>2:1  | DESIGN UNITS<br>INCH | THIRD ANGLE PROJECTION |
| TITLE<br>KK .156 HEADER ASSEMBLY<br>FRICTION LOCK BREAKAWAY<br>RIGHT ANGLE (LEAD-FREE)  |                      |                        |
| MOLEX INCORPORATED  |                      |                        |
| DOCUMENT NO.<br>SD-41672-002  |                      | SHEET NO.<br>1 OF *    |
| THIS DRAWING CONTAINS INFORMATION THAT IS PROPRIETARY TO MOLEX INCORPORATED AND SHOULD NOT BE USED WITHOUT WRITTEN PERMISSION |                      |                        |

5

4

3

2

1

|                 |               |
|-----------------|---------------|
| Header No:      | 41186-A-AN    |
| Pin No:         | 43294-0570    |
| Pin Length L:   | 1.100 / 27.90 |
| Mating M:       | .450 / 11.43  |
| Gold:           | .270 / 6.86   |
| Bend Height: Y: | .213 / 5.41   |
| PC Tail P:      | .212 / 5.38   |
| Tin:            | .200 / 5.08   |
| Pack Per:       | PK-41672-001  |

|                 |  |
|-----------------|--|
| Header No:      |  |
| Pin No:         |  |
| Pin Length L:   |  |
| Mating M:       |  |
| Gold:           |  |
| Bend Height: Y: |  |
| PC Tail P:      |  |
| Tin:            |  |
| Pack Per:       |  |

|                 |  |
|-----------------|--|
| Header No:      |  |
| Pin No:         |  |
| Pin Length L:   |  |
| Mating M:       |  |
| Gold:           |  |
| Bend Height: Y: |  |
| PC Tail P:      |  |
| Tin:            |  |
| Pack Per:       |  |

|                 |  |
|-----------------|--|
| Header No:      |  |
| Pin No:         |  |
| Pin Length L:   |  |
| Mating M:       |  |
| Gold:           |  |
| Bend Height: Y: |  |
| PC Tail P:      |  |
| Tin:            |  |
| Pack Per:       |  |

| Ckts | Material No | Engineer Number | Material No | Engineer Number | Material No | Engineer Number | Material No | Engineer Number |
|------|-------------|-----------------|-------------|-----------------|-------------|-----------------|-------------|-----------------|
| 2    |             |                 |             |                 |             |                 |             |                 |
| 3    |             |                 |             |                 |             |                 |             |                 |
| 4    |             |                 |             |                 |             |                 |             |                 |
| 5    |             |                 |             |                 |             |                 |             |                 |
| 6    | 50-29-1898  | A-41672-B06A228 |             |                 |             |                 |             |                 |
| 7    |             |                 |             |                 |             |                 |             |                 |
| 8    |             |                 |             |                 |             |                 |             |                 |
| 9    |             |                 |             |                 |             |                 |             |                 |
| 10   |             |                 |             |                 |             |                 |             |                 |
| 11   |             |                 |             |                 |             |                 |             |                 |
| 12   |             |                 |             |                 |             |                 |             |                 |
| 13   |             |                 |             |                 |             |                 |             |                 |
| 14   |             |                 |             |                 |             |                 |             |                 |
| 15   |             |                 |             |                 |             |                 |             |                 |
| 16   |             |                 |             |                 |             |                 |             |                 |
| 17   |             |                 |             |                 |             |                 |             |                 |
| 18   |             |                 |             |                 |             |                 |             |                 |
| 19   |             |                 |             |                 |             |                 |             |                 |
| 20   |             |                 |             |                 |             |                 |             |                 |
| 21   |             |                 |             |                 |             |                 |             |                 |
| 22   |             |                 |             |                 |             |                 |             |                 |
| 23   |             |                 |             |                 |             |                 |             |                 |
| 24   |             |                 |             |                 |             |                 |             |                 |

|                       |      |                       |        |  |               |
|-----------------------|------|-----------------------|--------|--|---------------|
| <b>A1</b>             | REV: | ECR/ECN INFORMATION:  | TITLE: | <b>KK 156 HEADER ASSEMBLY<br/> FRICITION LOCK BREAKAWAY<br/> RIGHT ANGLE (LEAD-FREE)</b> | SHEET No.     |
|                       |      | EC No.:               |        |  | <b>- 2 -</b>  |
|                       |      | DATE:                 |        |  |               |
| DOCUMENT NUMBER:      |      | CREATED / REVISED BY: |        | CHECKED BY:  | APPROVED BY:  |
| <b>SD- 41672 -002</b> |      | <b>ADERR</b>          |        | <b>SSOUSEK</b>   | <b>FSMITH</b> |